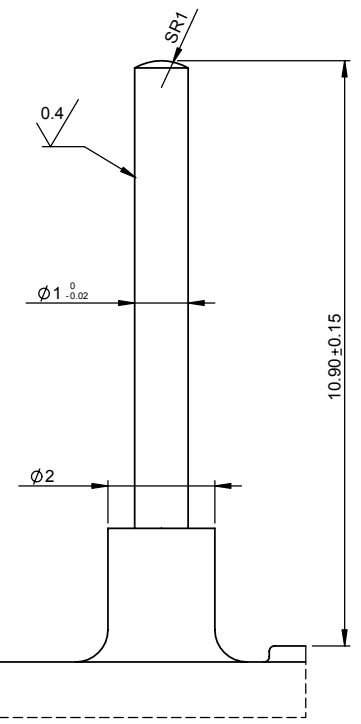
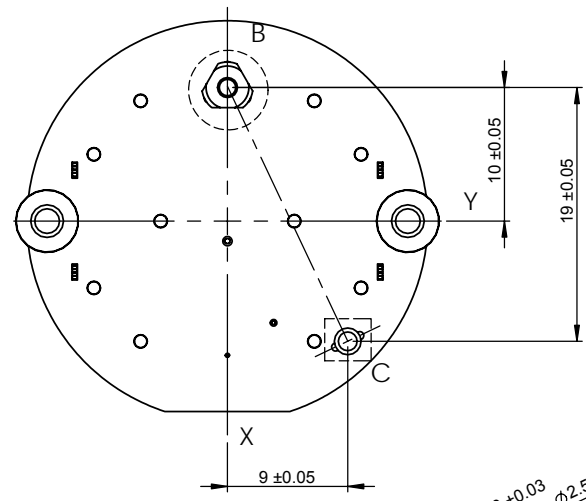
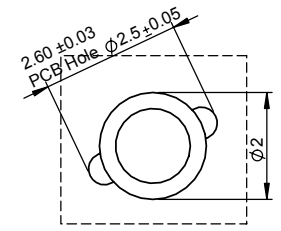
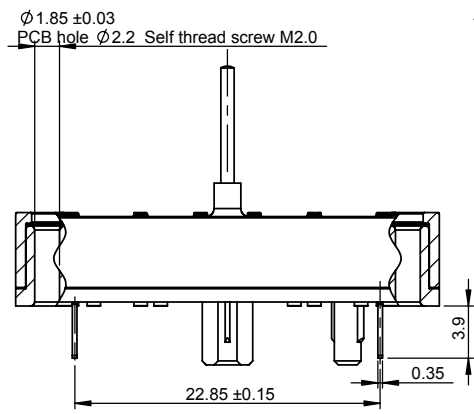
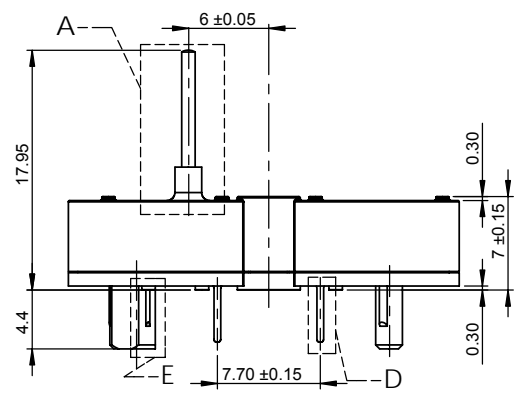


B (10 : 1)

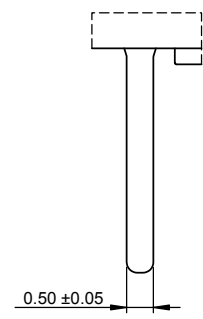


Partial View A  
Scale ( 10 : 1)

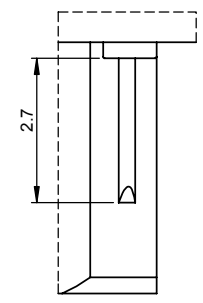
Other  $\sqrt{1.6}$



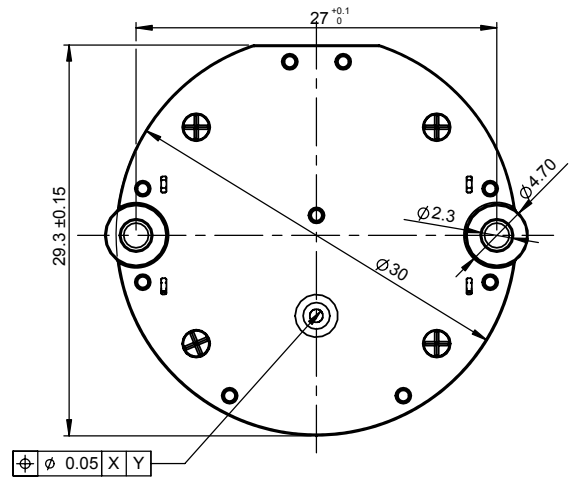
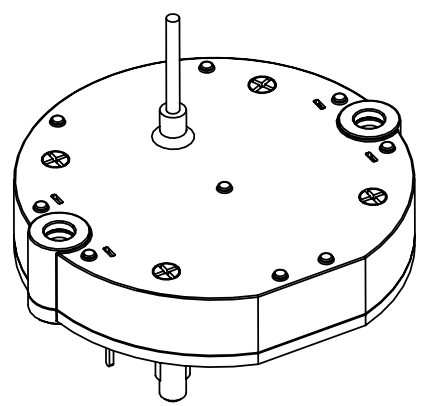
C (10 : 1)



D(10 : 1)




E (10 : 1)

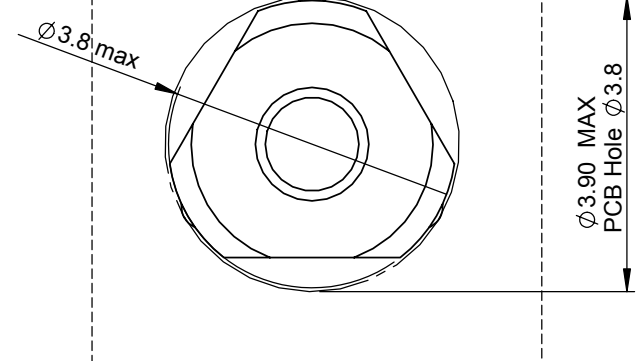


$\oplus \phi 0.05$  X Y

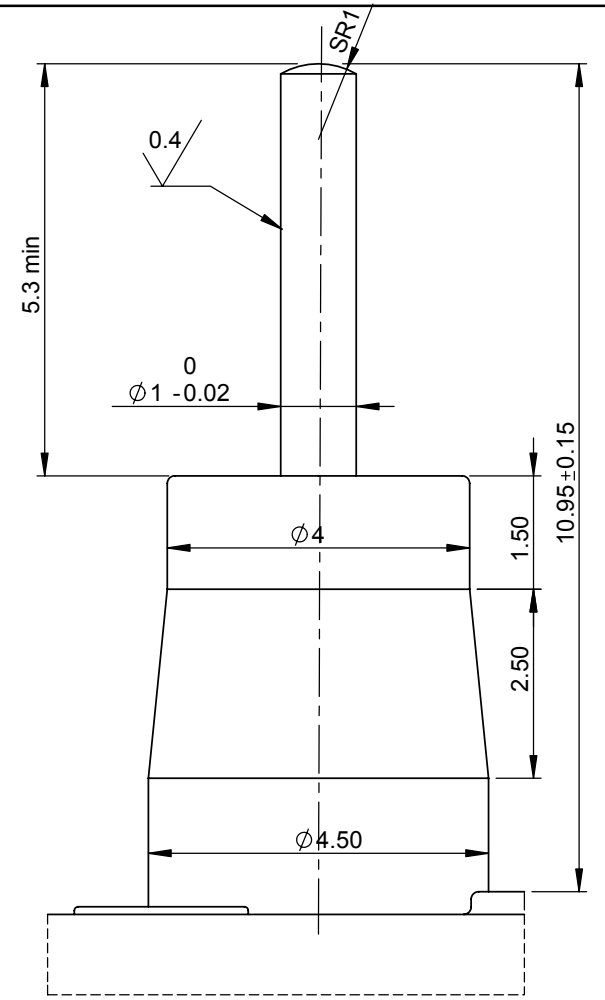
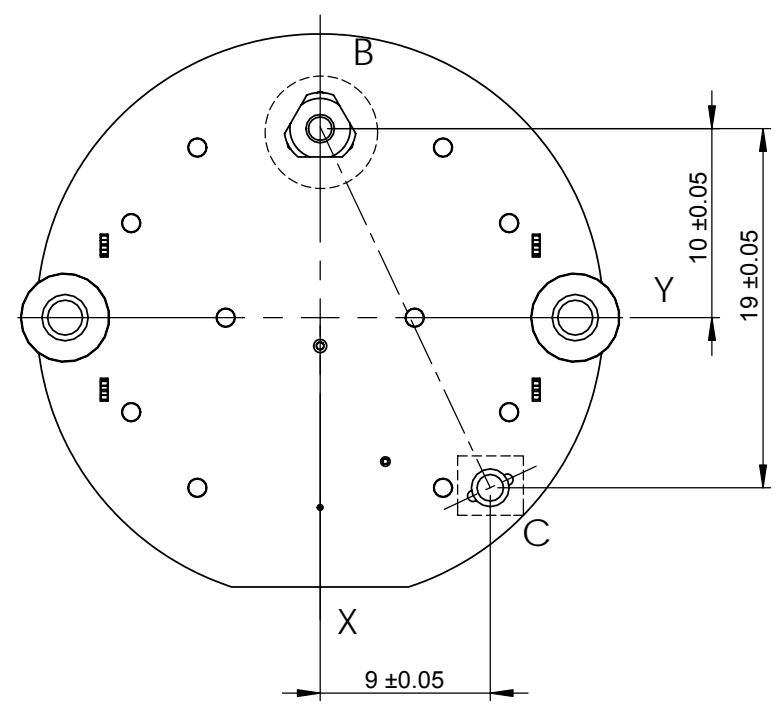
**SPECIFICATIONS:**

- Housing:**  
 -Material:PC Crastin  
 -Colour:Black  
 -Hold force clips:max 85N
- Shaft:**  
 -Material:Stainless Steel  
 -Axialforce(stake-on):max 150N  
 -Axial pull force:max 70N  
 -Rotation Angle:Max 315°
- El confaces**  
 -Material:Copper Alloy  
 -Plating:Sn 5±1µm  
 -Coil:el.resistance 280±20Ω

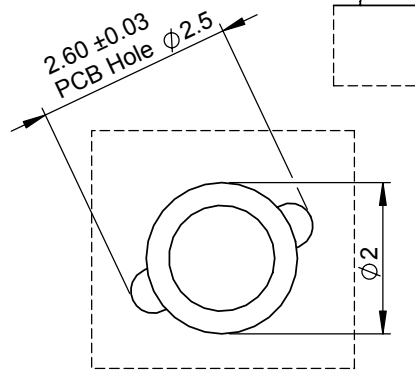
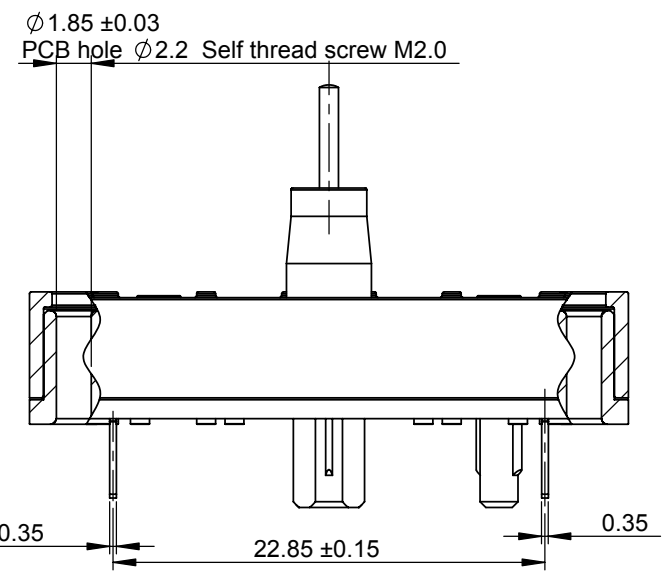
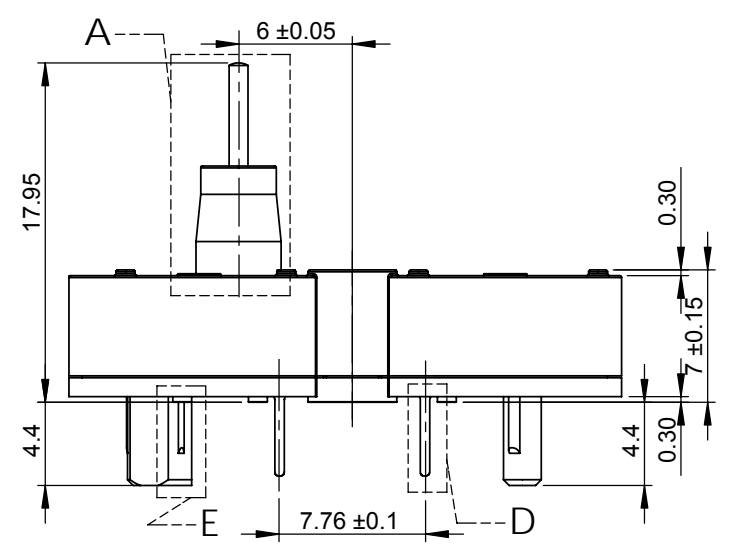
Product Name: <b>Vehicles Instrumentation Device</b>		Dimension in mm	
Description:		sheet	1/1
Production No: VID29-02/VID29-02P M6V29002B000020/M6V2902PB000020		size	A3
Created: 2004.08.12		scale	2.5:1
Check: 2004.08.15		NO tolerance	
Release: 2004.08.20		 X ±0.1 .X ±0.05 .XX ±0.02 / ±0.5°	



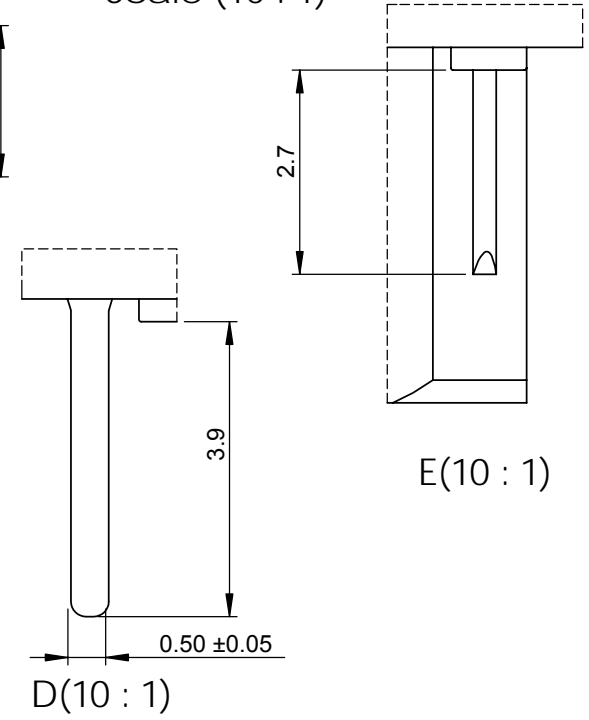
B (10 : 1)



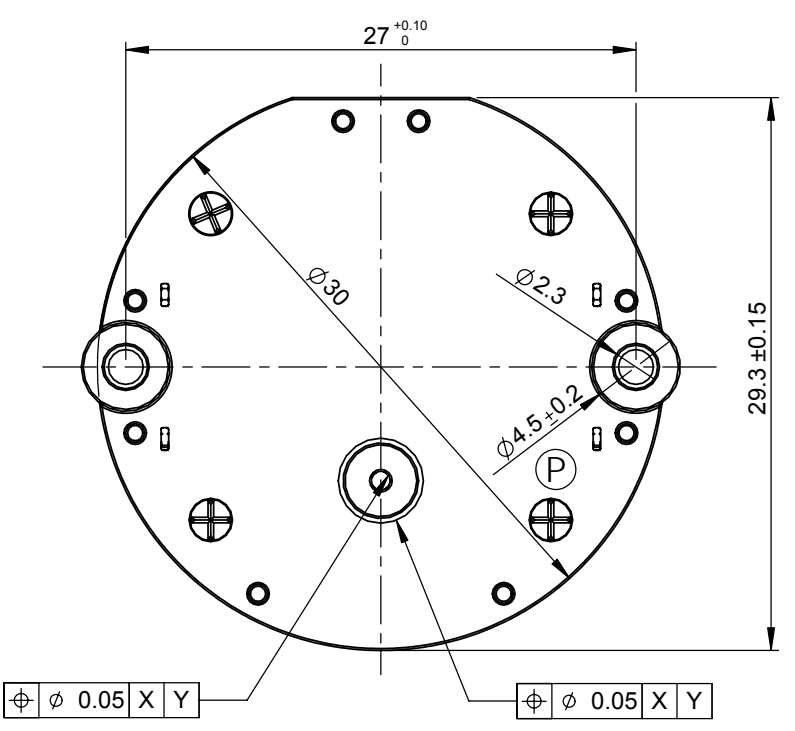
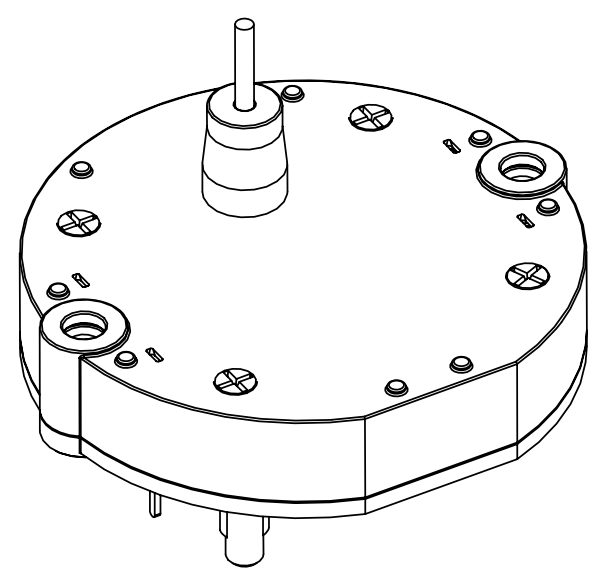
Partial View A  
Scale (10 : 1)



C (10 : 1)



E (10 : 1)



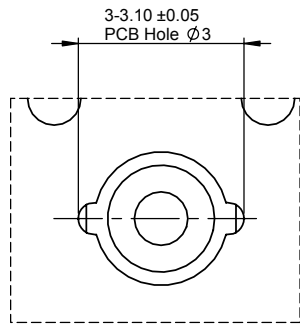
Other  $\sqrt{1.6}$

**SPECIFICATIONS:**

- Housing:**  
 -Material:PC Crastin  
 -Colour:Black  
 -Hold force clips:max 85N
- Shaft:**  
 -Material:Stainless Steel  
 -Axialforce(stake-on):max 150N  
 -Axial pull force:max 70N  
 -Rotation Angle:Max 315°
- EI confaces**  
 -Material:Copper Alloy  
 -Plating:Sn 5±1µm  
 -Coil:el.resistance 280±20Ω

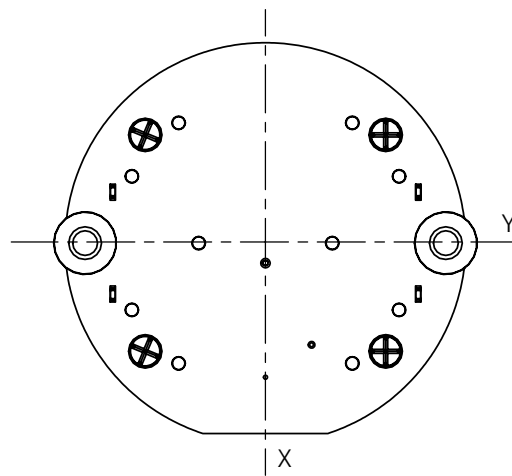
Product Name: <b>Vehicles Instrumentation Device</b>		
Description:		
Production No:	Created	2004.08.12
VID29-03/VID29-03P	Check	2004.08.15
M6V29003B000020/M6V2903PB000020	Release	2004.08.20

	Dimension in mm
sheet	1/1
size	A3
scale	2.5:1
	NO tolerance
X	±0.1
.X	+0.05
.XX	+0.02
$\sphericalangle$	±0.5°



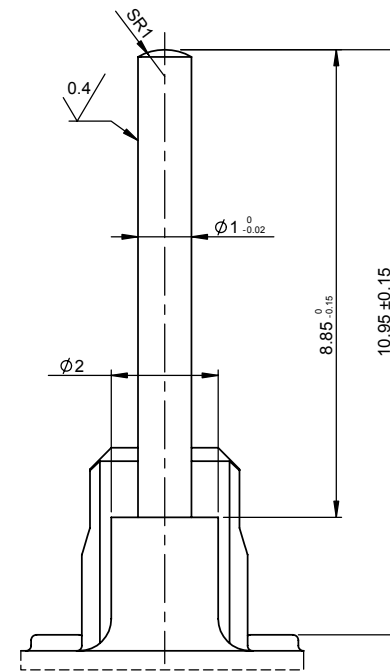
3-3.10 ±0.05  
PCB Hole Ø3

C(10:1)



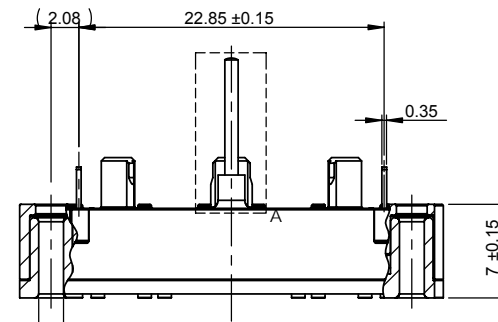
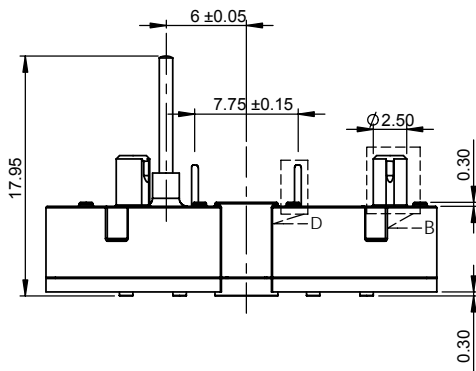
X

Y

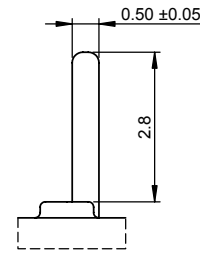


Partial View A  
Scale (10 : 1)

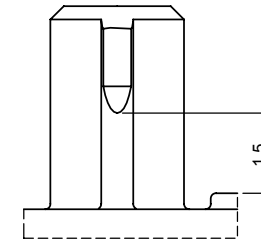
Other  $\sqrt{1.6}$



2-Ø1.85 ±0.03  
PCB hole Ø2.2 Self thread screw M2.0



D (10 : 1)



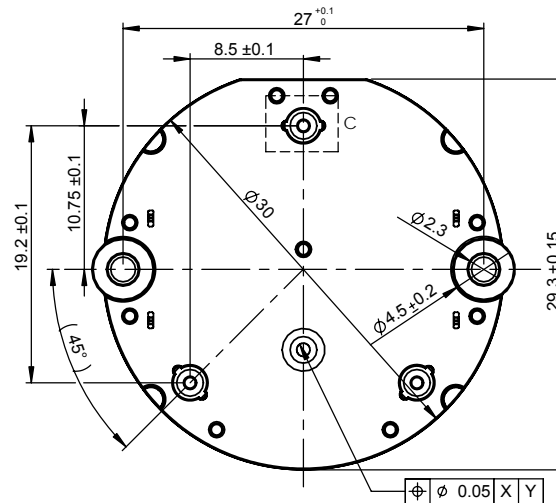
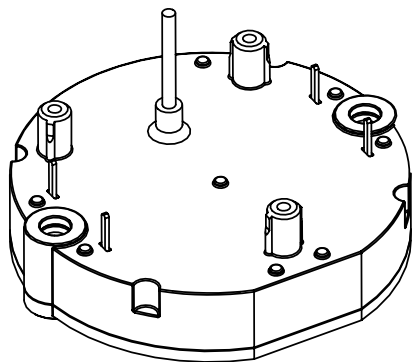
B (10 : 1)

**SPECIFICATIONS:**


Housing:  
-Material:PC Crastin  
-Colour:Black  
-Hold force clips:max 85N

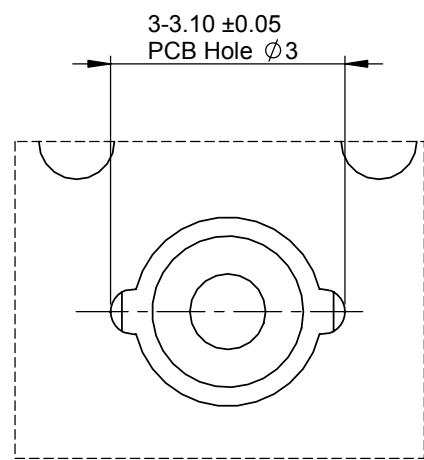
Shaft:  
-Material:Stainless Steel  
-Axialforce(stake-on):max 150N  
-Axial pull force:max 70N  
-Rotation Angle:Max 315°

El confaces  
-Material:Copper Alloy  
-Plating:Sn 5 ±1µm  
-Coil:el.resistance 280 ±20Ω

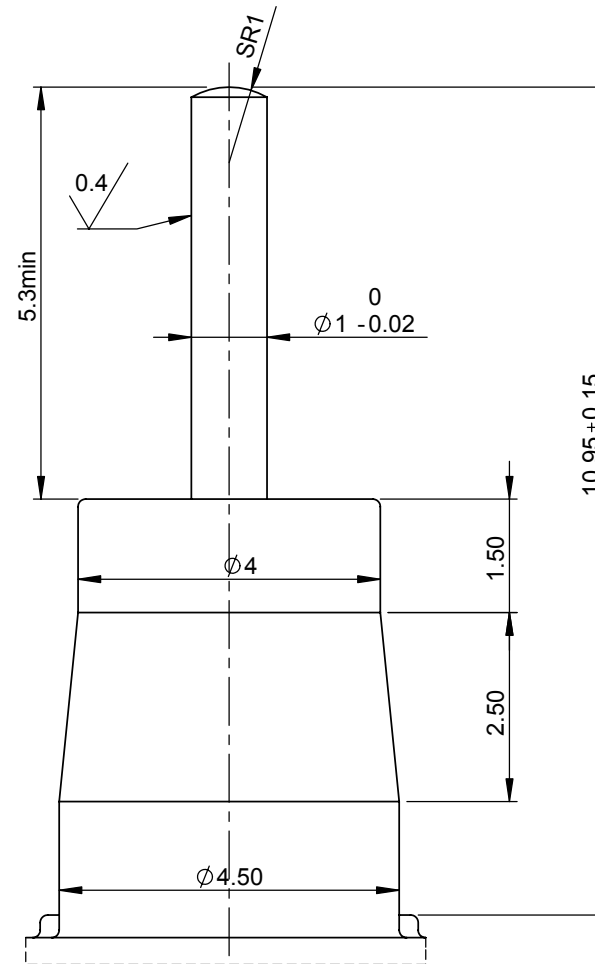
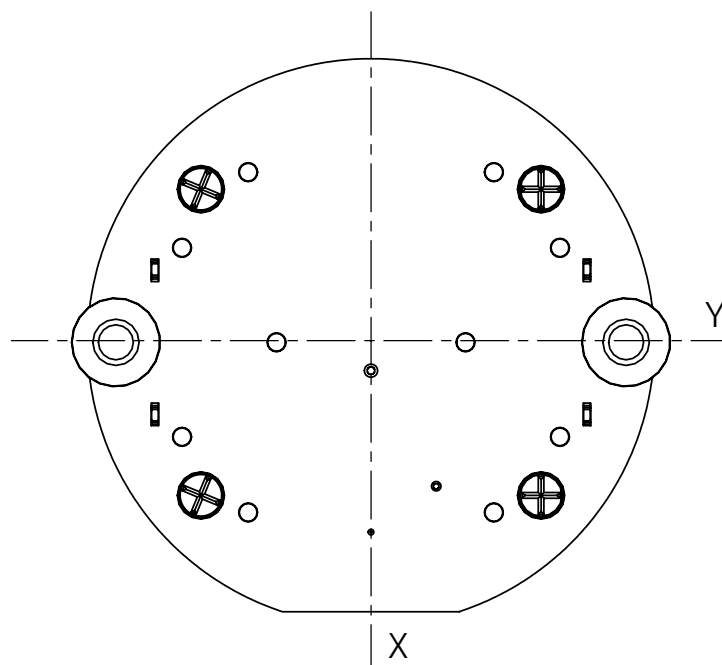


±0.05 X Y

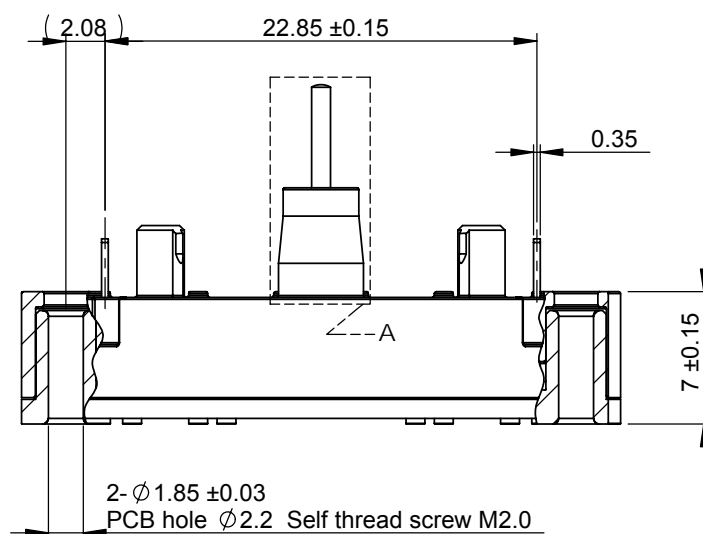
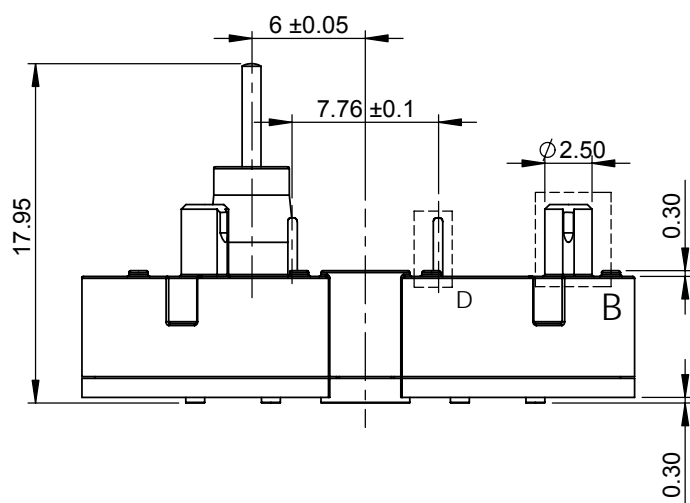
Product Name: <b>Vehicles Instrumentation Device</b>		Dimension in mm	
Description:		sheet	1/1
Production No: VID29-05/ VID29-05P M6V29005B000020/M6V2905PB000020		size	A3
Created	2004.08.12	scale	2.5:1
Check	2004.08.15	NO tolerance	
Release	2004.08.20	 X ±0.1 .X ±0.05 .XX ±0.02 / ±0.5°	



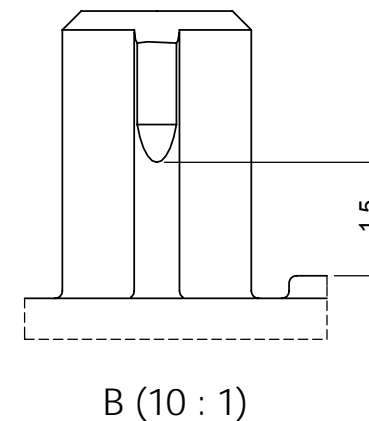
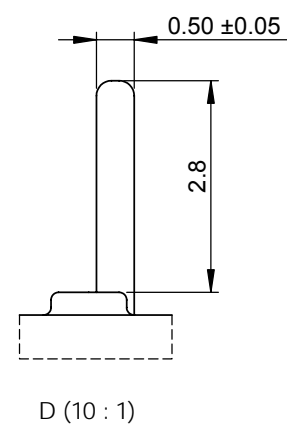
C (10 : 1)



Other  $\sqrt{1.6}$



PARTIAL VIEW A  
SCALE 10 : 1

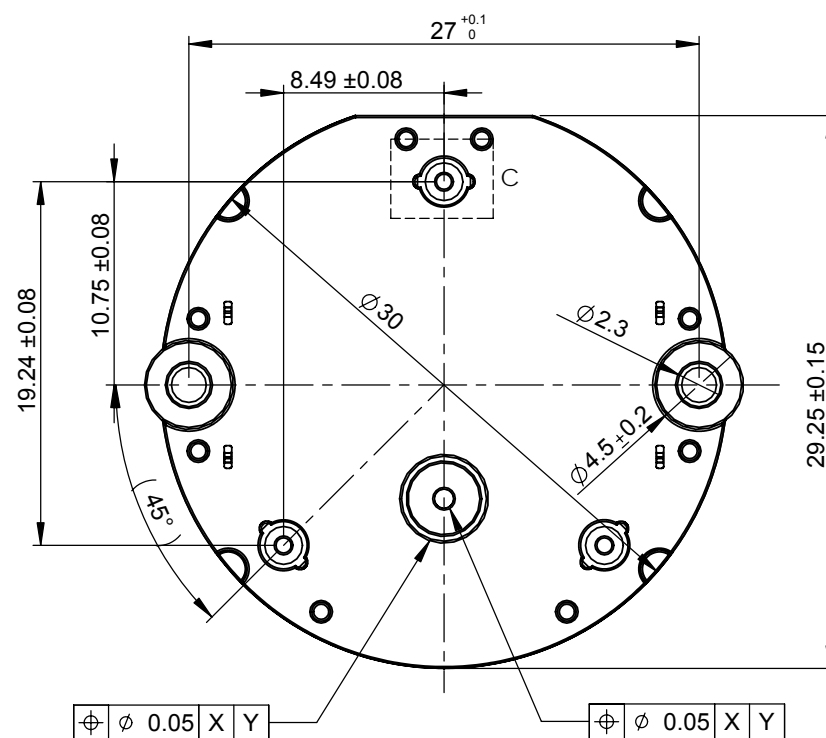
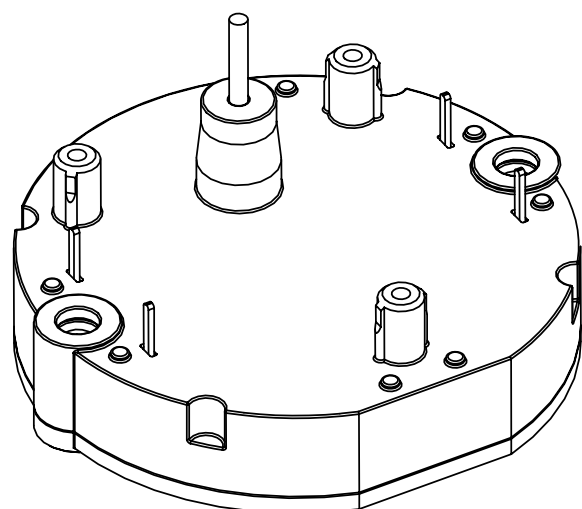



**SPECIFICATIONS:**

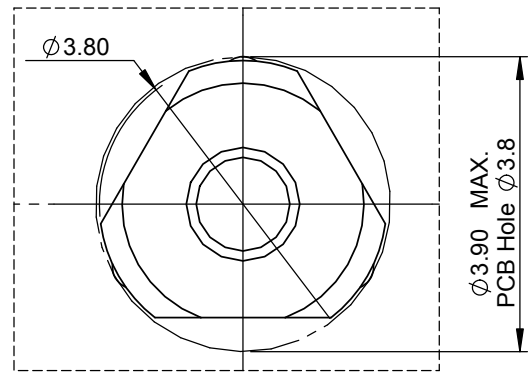
Housing:  
-Material:PC Crastin  
-Colour:Black  
-Hold force clips:max 85N

Shaft:  
-Material:Stainless Steel  
-Axialforce(stake-on):max 150N  
-Axial pull force:max 70N  
-Rotation Angle:Max 315°

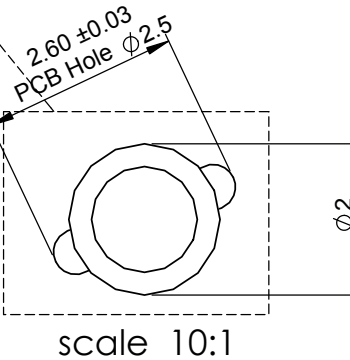
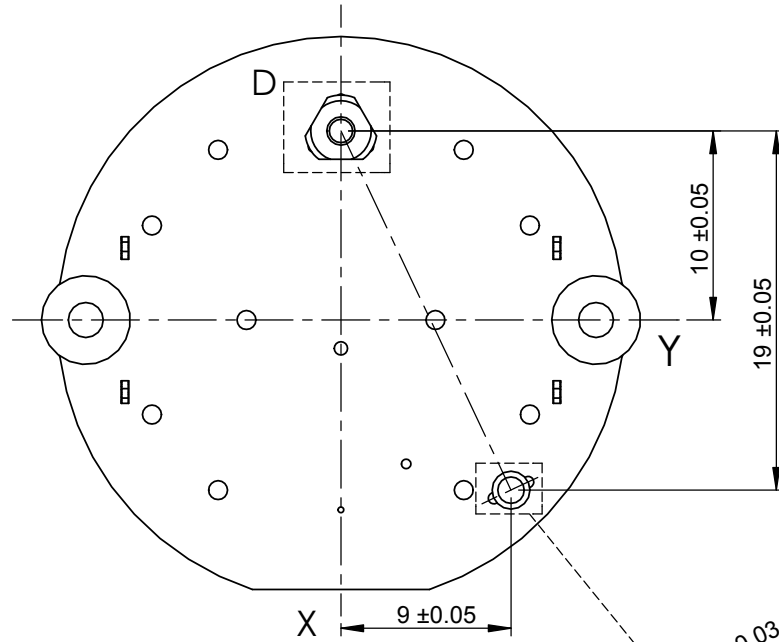
EI confaces  
-Material:Copper Alloy  
-Plating:Sn 5±1µm  
-Coil:el.resistance 280±20Ω



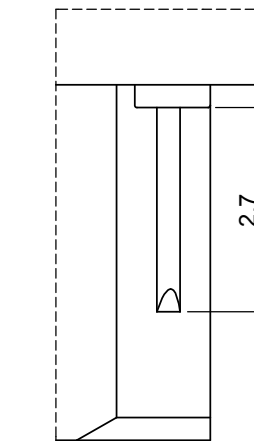
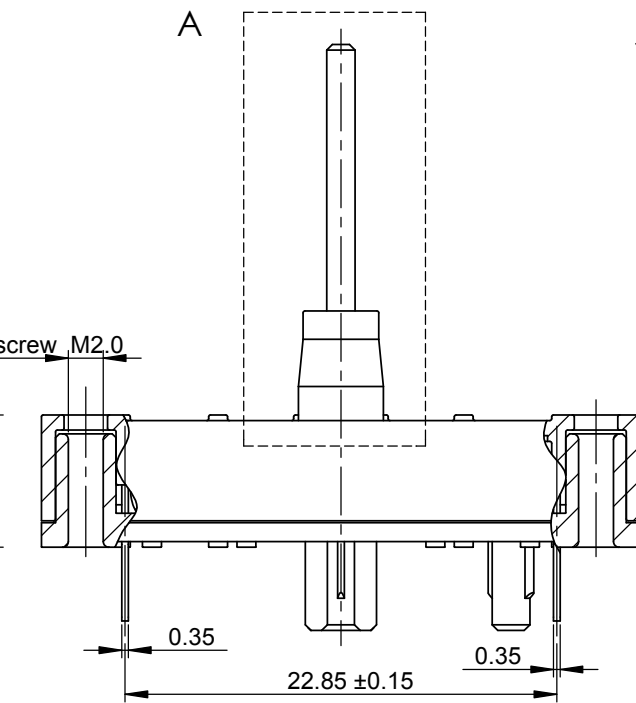
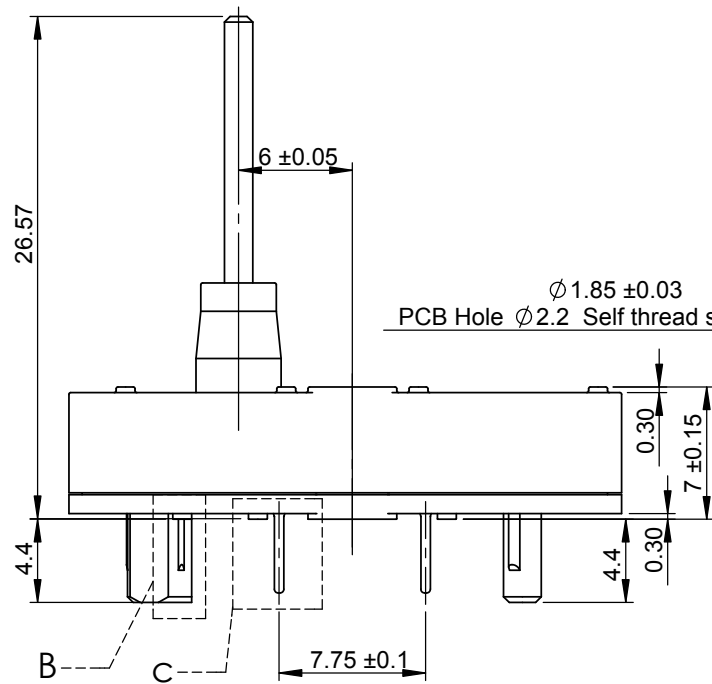
Product Name: <b>Vehicles Instrumentation Device</b>		Dimension in mm	
Description:		sheet	1/1
Production No:		size	A3
VID29-06/VID29-06P M6V29006B000020/M6V2906PB000020		scale	2.5:1
Created	2004.08.12	NO tolerance	
Check	2004.08.15	 X ±0.1 .X ±0.05 .XX ±0.02 ∠ ±0.5°	
Release	2004.08.20		



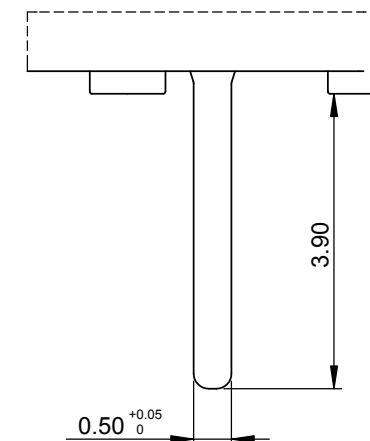
Partial View D  
scale 10:1



Partial View A  
scale 5:1



Partial View B  
scale 10:1



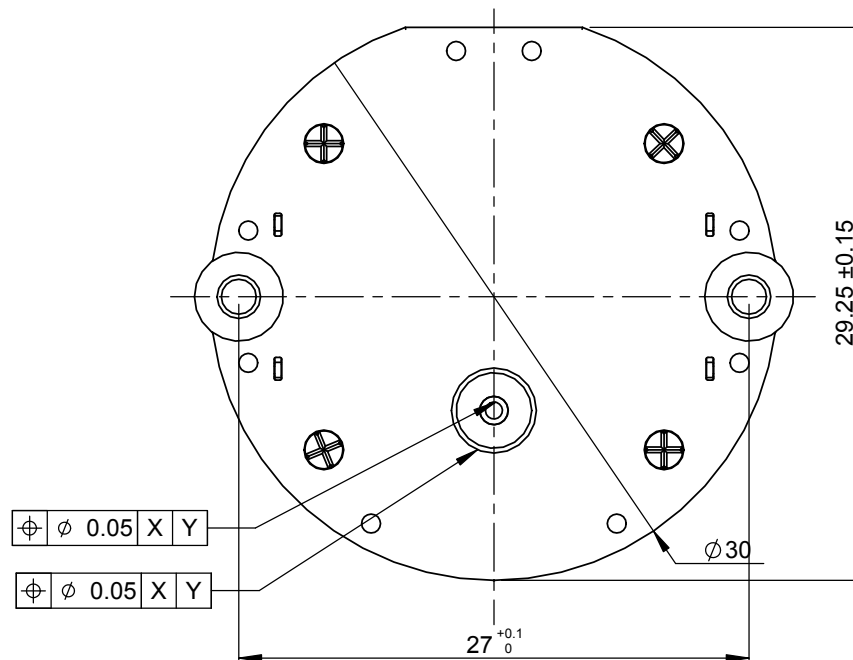
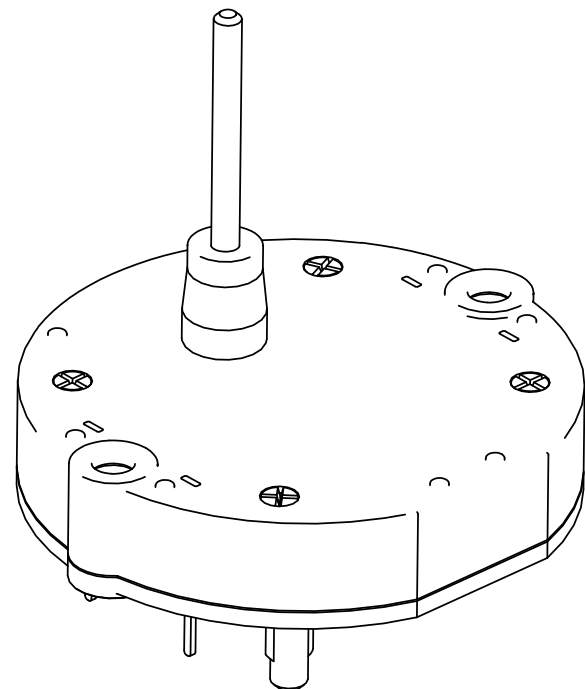
Partial View C  
scale 10:1

**SPECIFICATIONS:**

Housing:  
-Material:PC  
-Colour:Black  
-Hold force clips:max 85N

Shaft:  
-Material:Stainless Steel  
-Axial force(stake-on):max. 180N  
-Axial pull force:max. 90N  
-Radial force:max.13N  
-Rotation Angle:Max. 315°

EI contacts:  
-Material:Copper Alloy  
-Coil:el.resistance 280Ω  
Undim.Radio R0.05mm~R0.10mm  
Undim.chamfered edges 0.30mmX45°

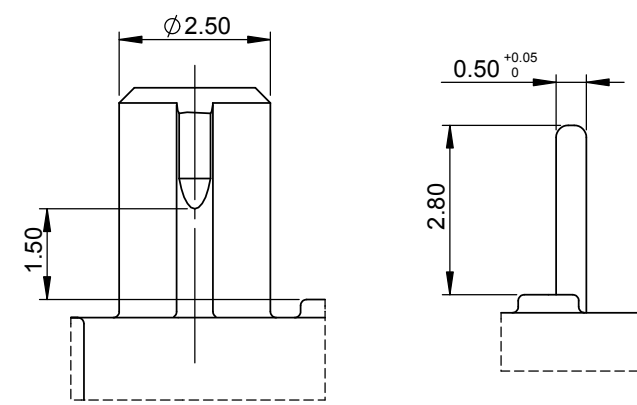


⊕ φ 0.05 X Y  
⊕ φ 0.05 X Y

						Product Name: Vehicles instrumentation Device		Dimension in mm	
						件数		1/1	
						图纸		A3	
						比例		2.5:1	
Description: 成品规范						Product No:		NO tolerance	
设计						标准化		X ±0.1	
审核						审批		.X ±0.05	
工艺						批准		.XX ±0.02	
						VID29-04		/ ±0.5	

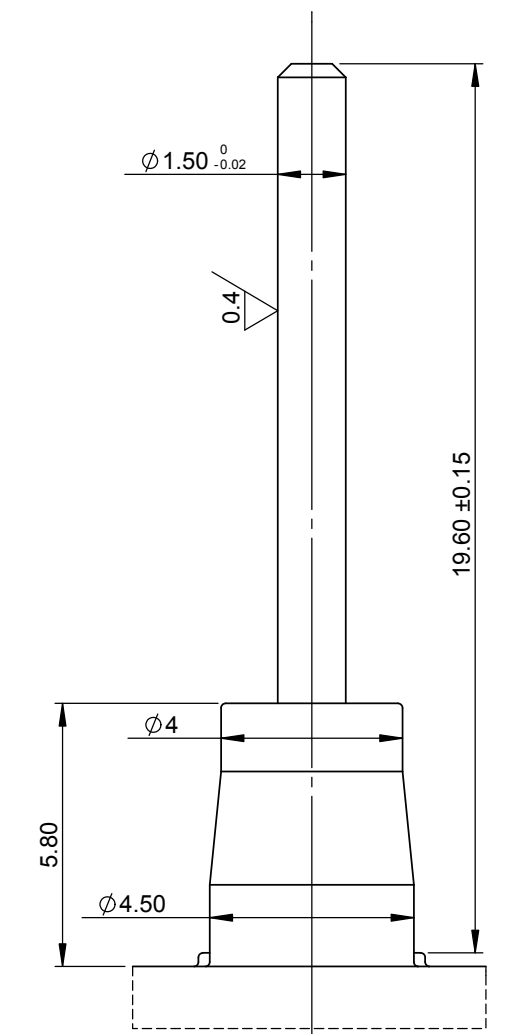
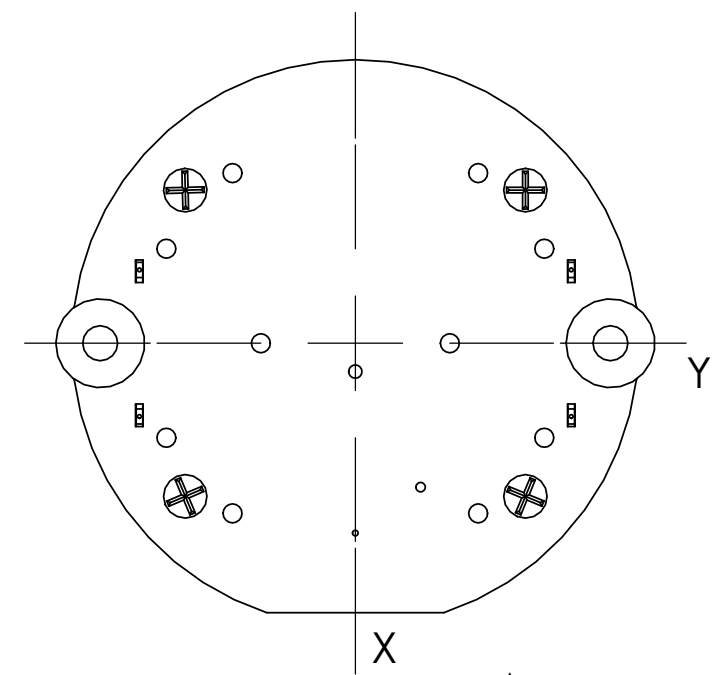


版本	
生效日期	
软盘号	
档案号	
签字	
日期	

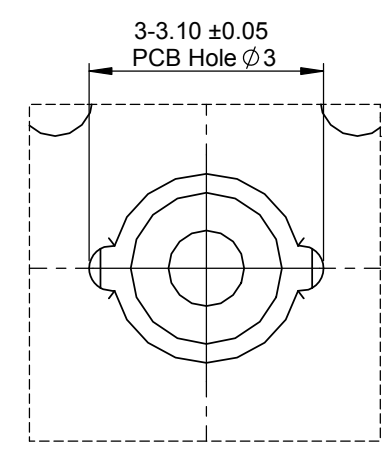
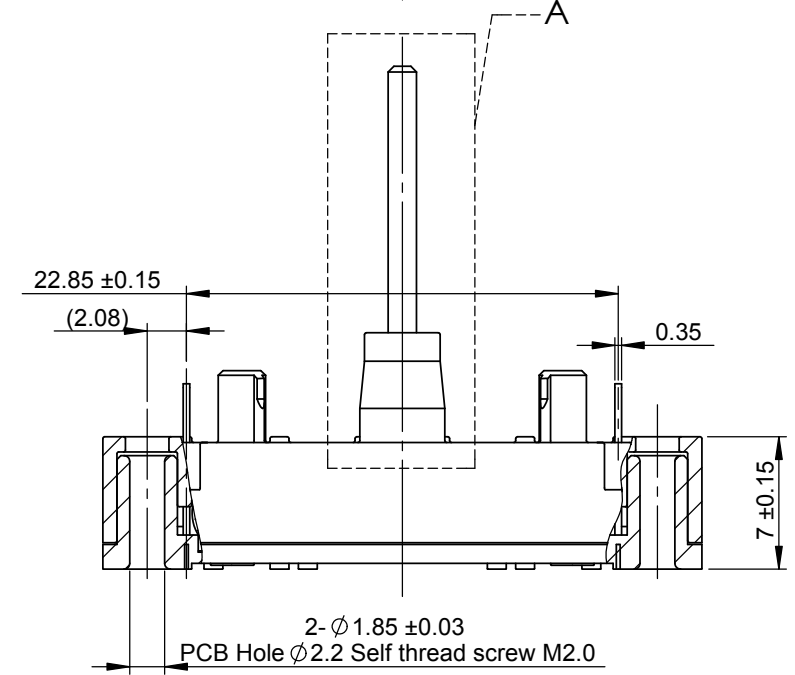
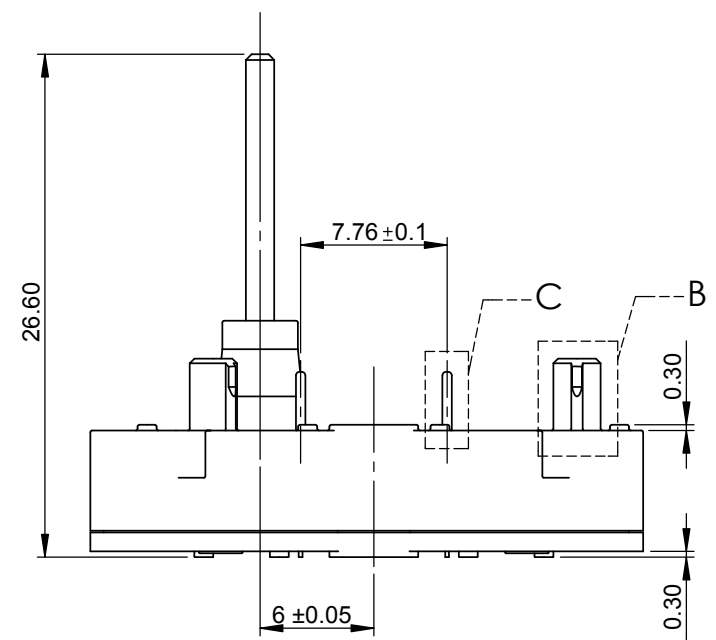


partial view B  
Scale 8:1

partial view C  
Scale 8:1



partial view A  
Scale 6:1



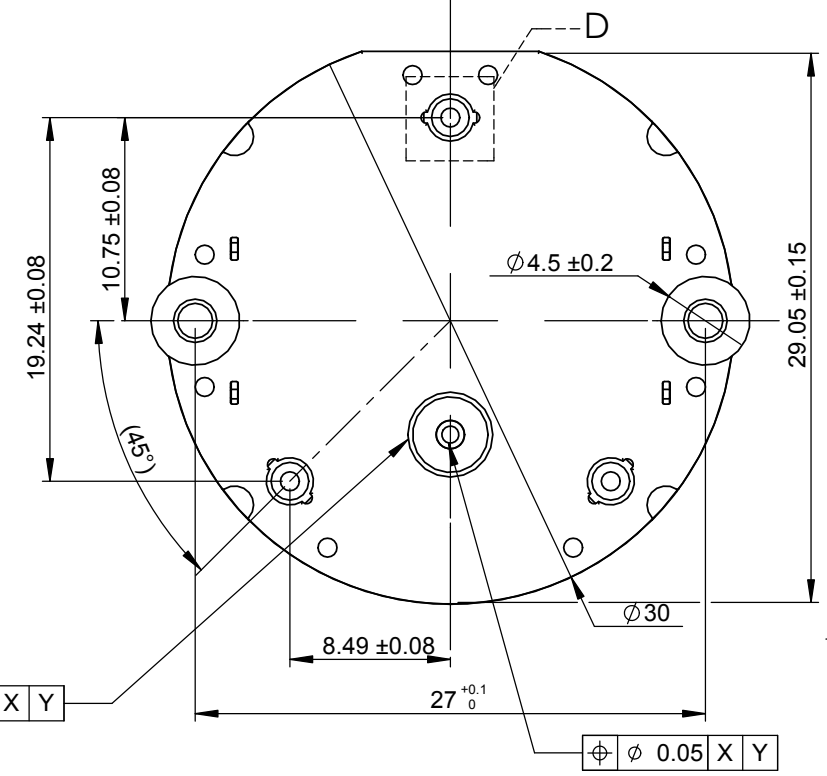
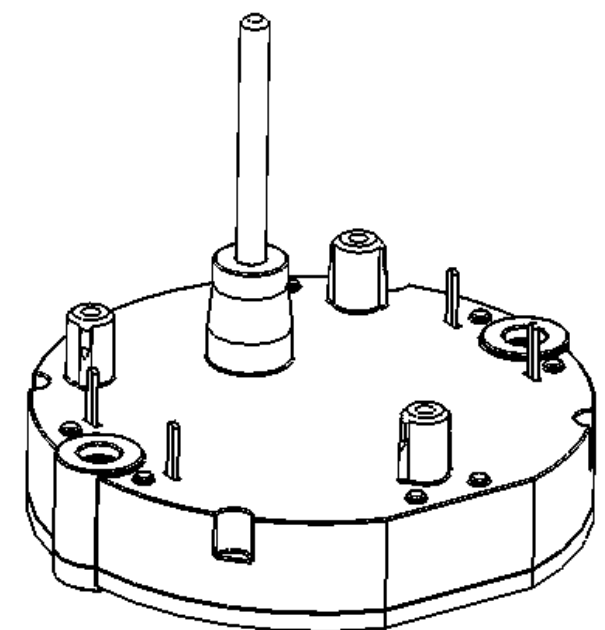
partial view D  
Scale 10:1

**SPECIFICATIONS:**

Housing:  
-Material:PC  
-Colour:Black  
-Hold force clips:max 85N

Shaft:  
-Material:Stainless Steel  
-Axialforce(stake-on):max. 180N  
-Axial pull force:max. 90N  
-Radial force:max.13N  
-Rotation Angle:Max. 315°

EI contacts:  
-Material:Copper Alloy  
-Coil:el.resistance 280Ω  
Undim.Radio R0.05mm~R0.10mm  
Undim.chamfered edges 0.30mmX45°



⊕ φ 0.05 X Y

⊕ φ 0.05 X Y

版本
生效日期
软盘号
档案号
签字
日期

						Product Name: Vehicles instrumentation Device		Dimension in mm	
						Description: 成品规范		件数	1/1
						Product No:		图纸	A3
						VID29-07		比例	2.5:1
标记	处数	更改单号	签字	日期	材料	NO tolerance			
设计			标准化					X	±0.1
审核			审批					.X	±0.05
工艺			批准					.XX	±0.02
									+0.5°

