

nRF51822 Bluetooth Module + Power



NRF51822 + pa Bluetooth module / external pillar antenna / CC2540 / corporate Bluetooth project

YJ-1500 4 + PA (BLE Power modules 4.0 + PA)

Product Description:

We have been focused on the development and application of wireless transmission, experienced more than R & D engineers can provide wireless modules, customized wireless solutions.

YJ-1500 4 + PA is our low power bluetooth 4.0 module design, YJ-1500 4 + bluetooth PA module works in 2.4G ISM band free license, YJ-1500 4+ Bluetooth Core PA module for the latest high-power high-power Bluetooth 4.0 chip from the Norwegian company NRF51822, with professional Division design, so that the effective communication distance has been greatly extended. In the RF section, the Division did a lot of debugging optimized matching, making the highest emission efficiency, harmonic minimum, so YJ-1500 4 Low power Bluetooth 4.0 + PA RFI external devices meet the minimum, but are not susceptible to interference from other devices, which greatly improves the working stability.

YJ-1500 4 Low power Bluetooth 4.0 + PA high degree of integration, the size of only 36mm * 12mm * 2mm, pitch 2.54mm, can be easily integrated into any space-constrained products, do not have to worry about the RF part of R&D, reduce R&D funding and shorten the development cycle

Product Features:

YJ-1500 4 + Global Development 2.4 GHz transceiver channel without AP wire power module consists NRF5122 low power Bluetooth 4.0 chip design, support Bluetooth 4.0BLE mode and private mode

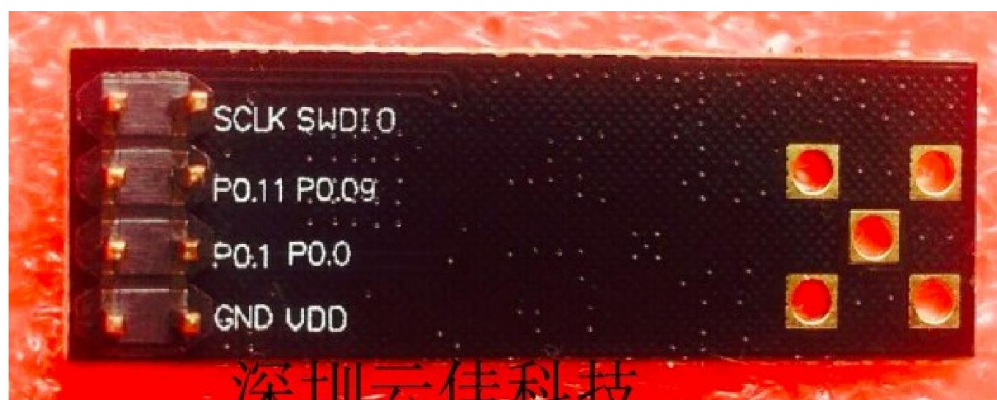
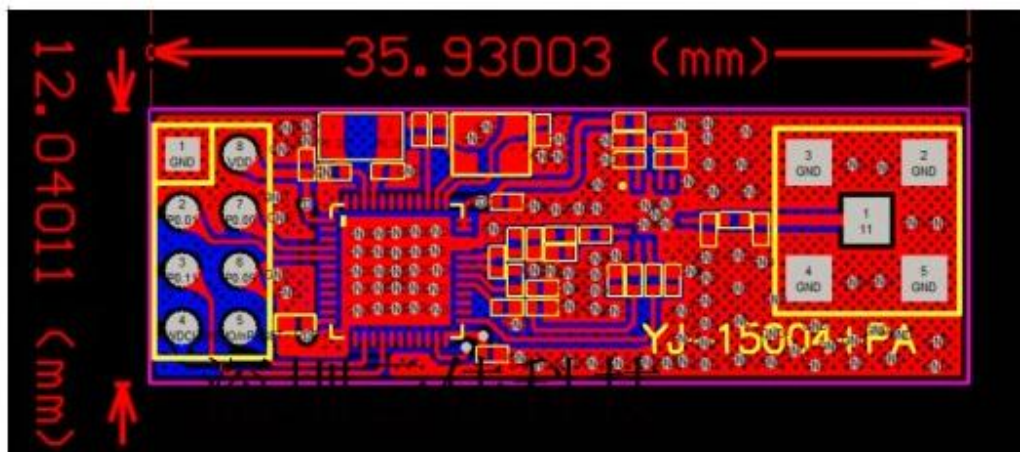
Cortex-M0 32-bit ARM 128K kernel Flash 16K RAM

128bit AES hardware encryption for high security applications has 1dB resolution of RSSI, 10 ADC I2C UART SPI WDT RTC PPI

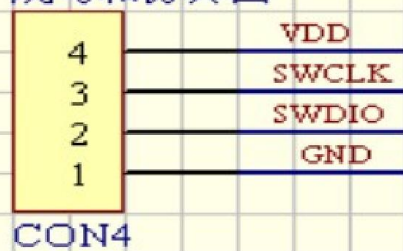
YJ-1500 4 + PA power module, the entire volume of 3 module 6 Mm * 12mm * 2mm, no 2.54mm spindle, can be developed as an integrated wireless application development platform Widely used transparent series bluetooth, remote control, wireless meter reading, industrial data acquisition, cycling, heart rate, clothing, keyboard and devices HID, RFID, anti-lost, jump rope, camera, etc.

Basic features:

Working frequency	2400 MHZ-2483 MHZ	
Operating Voltage	1.8-3.6V	
Maximum transmission power	+ 20dBm	
Wireless rate	250K / 1M / 2Mbps	
Emission current	About 80mA 20dBm output	
Currently accepted	About 30mA 1 Mbps	
MCU operating current	4.4mA 16MHZ 3v	From Flash run
MCU operating current	2.4mA 16MHZ 3v	From the running RAM
MCU standby mode	2.3uA3V on mode, all idle blocks	
MCU out of mode	420uA 3v off mode	
Typical sensitivity	-96dBm 250 kbps	0.1% BER



烧写和仿真口



J1

