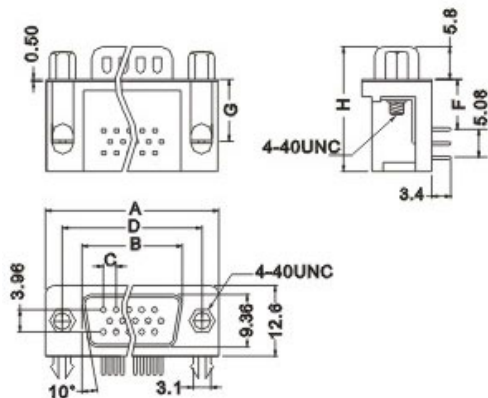


Connector >> D-sub Series >> DHR

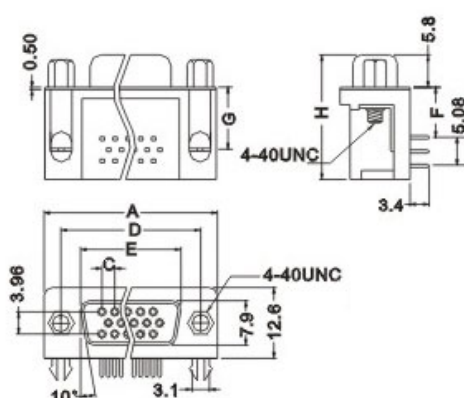


Contact Resistance	30 mΩ ,max. at DC 100mA
Insulator Resistance	1000 mΩ ,min. at DC 500V
Current Rating	5AMP
Withstanding voltage	AC1000V/1Min
Operating temperature	-55°C~+105°C
Contact	Brass or Phosphor Bronze
Housing	PBT & 30% Glass Fiber(UL94V-0)

[Male]



[Female]



Position	A	B	C	D	E
15	31.04	17.78	2.29	24.99	16.33
26	39.24	26.15	2.29	33.32	24.66
44	53.04	39.94	2.29	47.04	38.38
62	69.62	56.56	2.41	63.50	54.84

	F	G	H
B	3.08	5.08	14.45
C	9.4	10.89	22.2

How to Order:

DHR	-	15	-	F	-	B	-	B	-	<input type="text"/>
Series No.		No.of Poles		Item Type		Foot Print		Color		Customer Request
		15P / 26P		F: Female		B: 3.08MM		B. Blue		
		44P / 62P		M: Male		D: 9.40MM		K. Black		
								W. White		