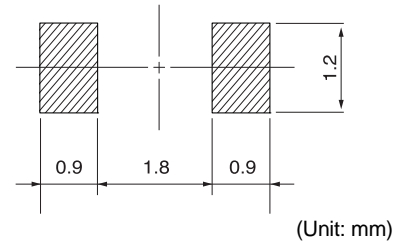
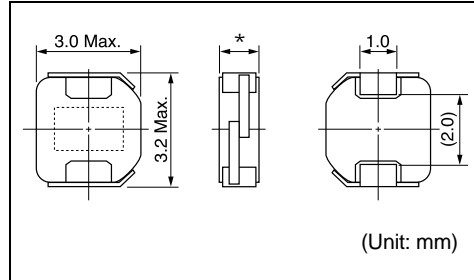
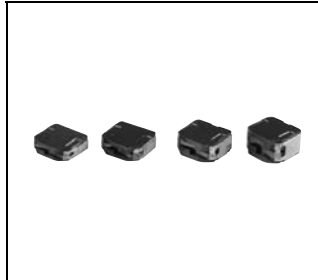


# DE2810C/DE2812C/DE2815C/DE2818C

**Inductance Range:** 1.2~12μH (DE2810C), 0.56~12μH (DE2812C), 0.47~12μH (DE2815C), 0.47~12μH (DE2818C)

## DIMENSIONS / 外形寸法図

## Recommended patterns 推奨パターン図



\*DE2810C: 1.0mm Max.  
DE2812C: 1.2mm Max.  
DE2815C: 1.5mm Max.  
DE2818C: 1.8mm Max.

## FEATURES / 特長

- Low profile (2.8 × 3.0mm square, 1.0/1.2/1.5/1.8mm Max.height).
- Magnetically shielded construction and low DC resistance.
- Ideal for a variety of DC-DC converter inductor applications.(DVC,DSC,Cellular phone,PDA)
- RoHS compliant
- 小型薄形構造(2.8 × 3.0mm角 高さ1.0/1.2/1.5/1.8mm Max.)
- 閉磁路構造、低直流抵抗
- 各種機器のDC-DCコンバータ用インダクタに最適 (DVC,DSC,Cellular phone,PDA)
- RoHS指令対応

## SELECTION GUIDE FOR STANDARD COILS

### TYPE DE2810C (Magnetically Shielded) 閉磁路タイプ,(Quantity/reel; 2,000 PCS)

東光品番	インダクタンス <sup>(1)</sup>	許容差	直流抵抗 <sup>(2)</sup>	直流重畳許容電流 <sup>(3)</sup>	温度上昇許容電流 <sup>(3)</sup>
TOKO Part Number	Inductance <sup>(1)</sup> (μH)	Tolerance (%)	DC Resistance <sup>(2)</sup> (mΩ) Max. (Typ.)	Inductance Decrease Current <sup>(3)</sup> (A) Max. (Typ.) $\frac{\Delta L}{L} = 30\%$	Temperature Rise Current <sup>(3)</sup> ΔT=40°C (A) Max. (Typ.)
1117AS-R56N	0.56	± 30	42 (35)	1.80 (2.40)	2.30 (2.70)
1117AS-1R2N	1.2	± 30	66 (55)	1.25 (1.70)	1.80 (2.10)
1117AS-1R5N	1.5	± 30	72 (60)	1.10 (1.50)	1.70 (2.00)
1117AS-2R2M	2.2	± 20	102 (85)	0.96 (1.30)	1.40 (1.60)
1117AS-2R7M	2.7	± 20	114 (95)	0.87 (1.15)	1.30 (1.50)
1117AS-3R3M	3.3	± 20	156 (130)	0.80 (1.05)	1.10 (1.30)
1117AS-4R7M	4.7	± 20	216 (180)	0.64 (0.86)	0.92 (1.10)
1117AS-6R8M	6.8	± 20	300 (250)	0.54 (0.73)	0.76 (0.90)
1117AS-100M	10.0	± 20	456 (380)	0.45 (0.60)	0.60 (0.71)
1117AS-120M	12.0	± 20	540 (450)	0.40 (0.54)	0.55 (0.65)

### TYPE DE2812C (Magnetically Shielded) 閉磁路タイプ,(Quantity/reel; 2,000 PCS)

東光品番	インダクタンス <sup>(1)</sup>	許容差	直流抵抗 <sup>(2)</sup>	直流重畳許容電流 <sup>(3)</sup>	温度上昇許容電流 <sup>(3)</sup>
TOKO Part Number	Inductance <sup>(1)</sup> (μH)	Tolerance (%)	DC Resistance <sup>(2)</sup> (mΩ) Max. (Typ.)	Inductance Decrease Current <sup>(3)</sup> (A) Max. (Typ.) $\frac{\Delta L}{L} = 30\%$	Temperature Rise Current <sup>(3)</sup> ΔT=40°C (A) Max. (Typ.)
1098AS-R56N	0.56	± 30	39 (32)	2.30 (3.00)	3.00 (3.70)
1098AS-1R2N	1.2	± 30	53 (44)	1.80 (2.40)	2.40 (2.90)
1098AS-1R5N	1.5	± 30	60 (50)	1.50 (2.10)	2.20 (2.60)
1098AS-2R0M	2.0	± 20	81 (67)	1.40 (1.80)	1.90 (2.30)
1098AS-2R2M	2.2	± 20	81 (67)	1.20 (1.60)	1.90 (2.30)
1098AS-2R7M	2.7	± 20	87 (72)	1.20 (1.60)	1.80 (2.20)
1098AS-3R3M	3.3	± 20	120 (100)	1.00 (1.40)	1.50 (1.70)
1098AS-4R7M	4.7	± 20	155 (130)	0.88 (1.20)	1.30 (1.50)
1098AS-6R8M	6.8	± 20	240 (200)	0.72 (0.96)	0.98 (1.10)
1098AS-100M	10.0	± 20	350 (290)	0.58 (0.77)	0.78 (0.92)
1098AS-120M	12.0	± 20	410 (340)	0.55 (0.73)	0.70 (0.82)

continued on next page次項へ続く

**SELECTION GUIDE FOR STANDARD COILS**
**TYPE DE2815C (Magnetically Shielded) 閉磁路タイプ, (Quantity/reel; 2,000 PCS)**

東光品番	インダクタンス <sup>(1)</sup>	許容差	直流抵抗 <sup>(2)</sup>	直流重畳許容電流 <sup>(3)</sup>	温度上昇許容電流 <sup>(3)</sup>
TOKO Part Number	Inductance <sup>(1)</sup> (μH)	Tolerance (%)	DC Resistance <sup>(2)</sup> (mΩ) Max. (Typ.)	Inductance Decrease Current <sup>(3)</sup> (A) Max. (Typ.) $\frac{\Delta L}{L} = 30\%$	Temperature Rise Current <sup>(3)</sup> ΔT=40°C (A) Max. (Typ.)
1071AS-R47N	0.47	± 30	30 (25)	2.90 (3.80)	3.50 (4.20)
1071AS-1R0N	1.0	± 30	40 (33)	2.10 (2.70)	2.80 (3.30)
1071AS-1R5N	1.5	± 30	44 (37)	1.70 (2.30)	2.50 (3.00)
1071AS-2R2M	2.2	± 20	60 (50)	1.40 (1.80)	2.00 (2.40)
1071AS-2R7M	2.7	± 20	78 (65)	1.20 (1.60)	1.80 (2.10)
1071AS-3R3M	3.3	± 20	84 (70)	1.10 (1.50)	1.70 (2.00)
1071AS-4R7M	4.7	± 20	120 (100)	0.95 (1.30)	1.40 (1.70)
1071AS-6R8M	6.8	± 20	180 (150)	0.80 (1.00)	1.10 (1.30)
1071AS-100M	10.0	± 20	252 (210)	0.65 (0.90)	0.95 (1.10)
1071AS-120M	12.0	± 20	288 (240)	0.60 (0.80)	0.85 (1.00)

**TYPE DE2818C (Magnetically Shielded) 閉磁路タイプ, (Quantity/reel; 2,000 PCS)**

東光品番	インダクタンス <sup>(1)</sup>	許容差	直流抵抗 <sup>(2)</sup>	直流重畳許容電流 <sup>(3)</sup>	温度上昇許容電流 <sup>(3)</sup>
TOKO Part Number	Inductance <sup>(1)</sup> (μH)	Tolerance (%)	DC Resistance <sup>(2)</sup> (mΩ) Max. (Typ.)	Inductance Decrease Current <sup>(3)</sup> (A) Max. (Typ.) $\frac{\Delta L}{L} = 30\%$	Temperature Rise Current <sup>(3)</sup> ΔT=40°C (A) Max. (Typ.)
1072AS-R47N	0.47	± 30	22 (18)	2.75 (3.65)	4.40 (5.20)
1072AS-1R0N	1.0	± 30	30 (25)	1.95 (2.60)	3.50 (4.20)
1072AS-1R5N	1.5	± 30	34 (28)	1.65 (2.20)	3.10 (3.70)
1072AS-1R8N	1.8	± 30	42 (35)	1.50 (2.00)	2.80 (3.30)
1072AS-2R2M	2.2	± 20	47 (39)	1.35 (1.80)	2.60 (3.00)
1072AS-2R7M	2.7	± 20	58 (48)	1.20 (1.60)	2.20 (2.60)
1072AS-3R3M	3.3	± 20	64 (53)	1.10 (1.45)	2.10 (2.50)
1072AS-4R7M	4.7	± 20	87 (72)	0.95 (1.25)	1.80 (2.10)
1072AS-6R8M	6.8	± 20	138 (115)	0.78 (1.05)	1.35 (1.60)
1072AS-100M	10.0	± 20	174 (145)	0.65 (0.86)	1.20 (1.40)
1072AS-120M	12.0	± 20	228 (190)	0.60 (0.80)	1.00 (1.20)

- (1) Inductance is measured with a LCR meter 4284A\* or equivalent.  
Test frequency at 100kHz
- (2) DC Resistance is measured with a Digital Multimeter TR6871 (ADVANTEST) or equivalent.
- (3) Maximum allowable DC current is that which causes a 30% inductance reduction from the initial value, coil temperature to rise by 40 whichever is smaller.  
(Reference ambient temperature 20 )

\* Agilent Technologies

- (1) インダクタンスはLCRメータ4284A\* または同等品により測定する。測定周波数は100kHzです。
- (2) 直流抵抗はデジタルマルチメータTR6871(Advantest)または同等品により測定する
- (3) 最大許容電流は、直流重畳電流を流した時インダクタンスの値が初期値より30%減少する直流電流値、または直流電流により、コイルの温度が40 上昇の何れか小さい値です。  
( 周囲温度20 を基準とする。 )

\* Agilent Technologies