

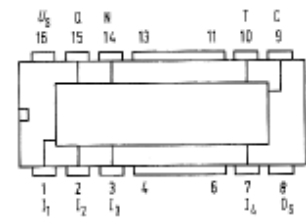
FZL135

Country: Germany
Brand: [Siemens; D \(S.& Halske / S. Electrogeräte\)](#)

Tube type: IC - Integrated Circuit

Identical to **FZL135**

Similar Tubes Normally replaceable-slightly different:
[E435E](#)



FZL135: Siemens
Günther Stabe

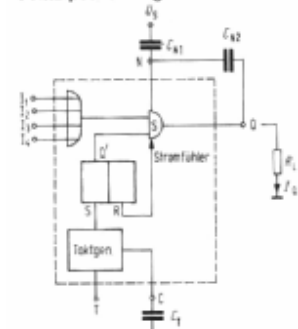
Base SPECIAL TUBEBASE in general

Was used by Industrial

Filament Solid State

Description **Aufbau/internal:** IC (DTL-Logic);
Form/Case/Outline: DIP-16 (FZL135* / FZL135S**);
Type/Application: Single Power Driver, Logic Function: 4 Schmitt-Trigger-Inputs with OR;
Daten/electr.data: Vcc: <15 V; Icc: 7 mA; Pd: 165 mW;
 t op: -__...+85 °C; Output Transistor Ion Max.=400mA;
 V(OL)Max.(V)Lo Level Out.Volt.=13 @Iol (A)=400m;
 VOH Max.=20* / 30**; V(IL) Max.(V)Lo Level In.Volt.=6.0; V(IH) Min.(V)Hi Level In.Volt.=8.0;
 Ähnlich/similar: FZL131[S] = geringere t op;
 -

Prinzipschaltung



FZL135: Siemens
Günther Stabe

Dimensions (WHD) 20 x 7 x 8 mm / 0.79 x 0.28 x 0.31 inch

incl. pins / tip

Weight 1 g / 0.04 oz

Literature