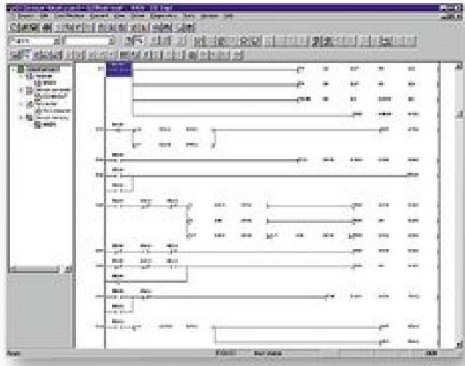


# GX-DEVELOPER- FX -

## PLC Programming Software, Micro FX, Windows, 1 Licence



[Add to compare](#)

Image is for illustrative purposes only. Please refer to product description.



**Manufacturer:**

[MITSUBISHI](#)

**Manufacturer Part No:**

GX-DEVELOPER- FX

**Order Code:**

3825577

**Product Range**

[GX Developer](#)

[★★★★★ ★★★★★ No rating value for MITSUBISHI - GX-DEVELOPER- FX - SOFTWARE, MICRO FX PLC](#)

## Product Information

- Core Architecture:  
=
- Supported Families:  
=
- Software Edition:  
=
- Licence Type:  
=

- No. of User Licences:  
[1](#)
  - Supported Hosts:  
[Windows 95, Windows 98, Windows Me, Windows NT 4.0, Windows 2000 Professional and Windows XP](#)
  - Product Range:  
[GX Developer](#)
- [Find similar products](#) Choose and modify the attributes above to find similar products.

## Product Overview

The GX-DEVELOPER- FX is a simple programming software that supports the entire PLC range. It is a cost effective cut down version of GX developer, specifically designed for micro FX PLCs. GX developer supports all MELSEC controllers from the compact PLCs of the MELSEC FX series to the modular PLCs including MELSEC System Q. This software shines with a simple, intuitive interface and a short learning curve. GX Developer supports the MELSEC instruction list (IL), MELSEC ladder diagram (LD) and MELSEC sequential function chart languages. You can switch back and forth between IL and LD at will while you are working. You can program your own function blocks (MELSEC QnA/QnAS/System Q series), and a wide range of utilities are available for configuring special function modules for the MELSEC System Q. The package includes powerful editors and diagnostics functions for configuring your MELSEC networks and hardware, and extensive testing and monitoring functions.

- Standard programming software for all MELSEC PLCs
- Comfortable prompting under Microsoft Windows
- Ladder diagram, instruction list or sequential function chart
- Changeable during operation
- Powerful monitoring and test functions
- Offline simulation for all PLC types
- No hardware needed

## Applications

Embedded Design & Development