
Filter transformer | GETWELL



Transformer filter feature & characteristic:

- ◆Wide frequency range(Operating Frequency:0.1~20MHz).
- ◆Use high permeability MnZn ferrite, on noise with High impedance.

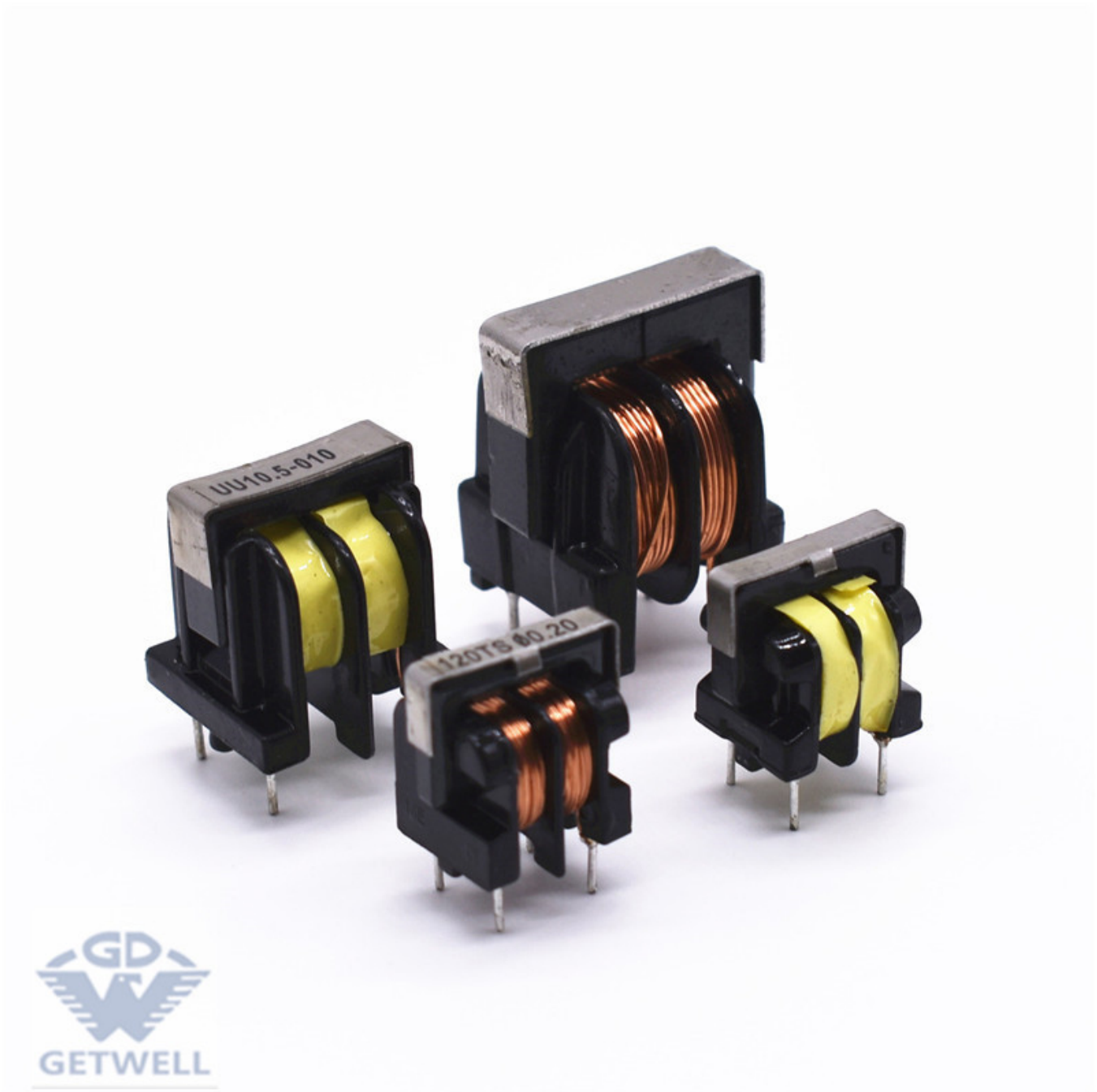
Filter transformer application:

- ◆Communication system
- ◆Internet system
- ◆Compute system
- ◆Medial apparatus and instruments
- ◆OA equipment; TV; acoustics
- ◆Air conditioner; all kinds of electronics instrulments
- ◆Aircraft equipment and so on

Remark:

- 1.H: Horizontral Type, V: Vertical Type.
- 2.Customer's Specifications are welcome.

Transformer based filter images:

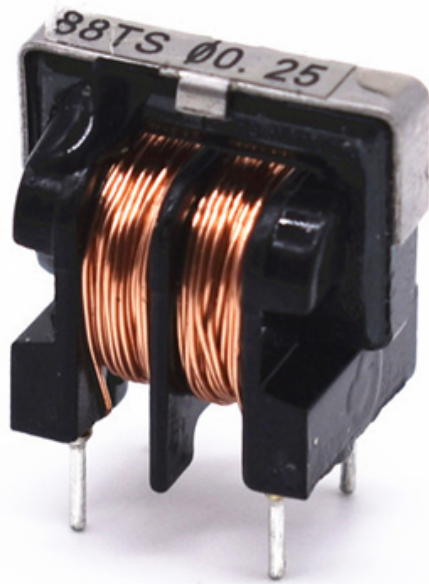


Filter transformer

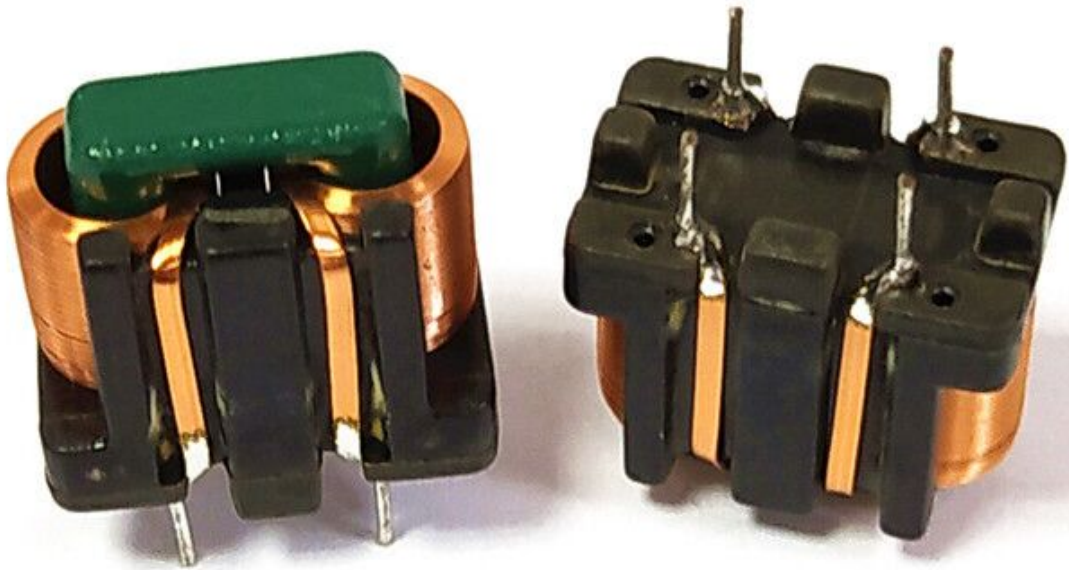
People also ask :

1. [What Is A Chip Common Mode Choke](#)

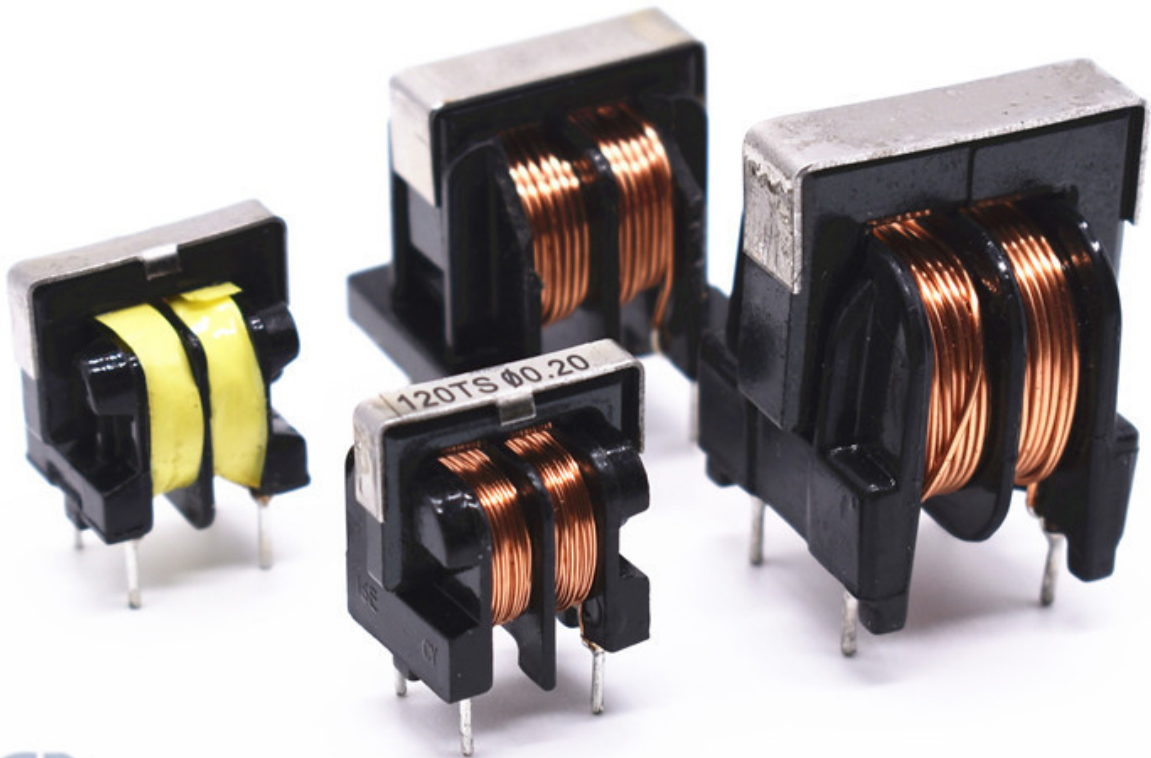
Learn more about GETWELL products



[line filter transformer](#)



[Common mode choke filter](#)



[High frequency transformer](#)

Product link : <https://www.inductorchina.com/filter-transformer-getwell.html>