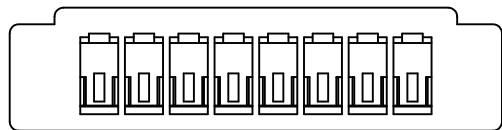
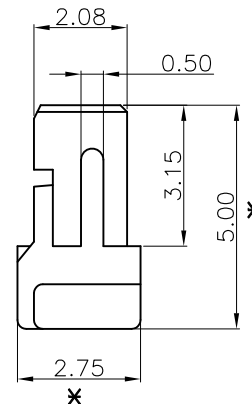
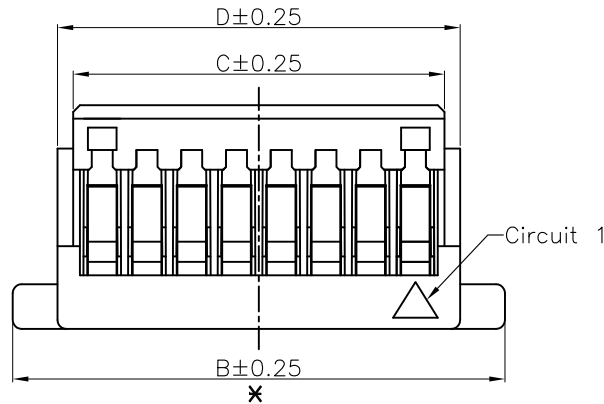


ORDER CODE  
M40-110 XX 00



## NOTES:

1. MATERIAL(HALOGEN FREE): NYLON 66, UL94V-0 (WHITE).
2. ORDER INFORMATION PLEASE SEE TABLE.
3. PACKING: BAG.
4. ALL DIMENSIONS AND NOTES MARKED \* ARE CRITICAL AND MUST BE CHECKED IN ACCORDANCE WITH QUALITY DOC. QI-02A

Pin	Dim.(mm)				Order Code
	A	B	C	D	
02	1.00	5.00	2.30	3.00	M40-1100200
03	2.00	6.00	3.30	4.00	M40-1100300
04	3.00	7.00	4.30	5.00	M40-1100400
05	4.00	8.00	5.30	6.00	M40-1100500
06	5.00	9.00	6.30	7.00	M40-1100600
07	6.00	10.00	7.30	8.00	M40-1100700
08	7.00	11.00	8.30	9.00	M40-1100800
09	8.00	12.00	9.30	10.00	M40-1100900
10	9.00	13.00	10.30	11.00	M40-1101000
11	10.00	14.00	11.30	12.00	M40-1101100
12	11.00	15.00	12.30	13.00	M40-1101200
13	12.00	16.00	13.30	14.00	M40-1101300
14	13.00	17.00	14.30	15.00	M40-1101400
15	14.00	18.00	15.30	16.00	M40-1101500
16	15.00	19.00	16.30	17.00	M40-1101600
17	16.00	20.00	17.30	18.00	M40-1101700
18	17.00	21.00	18.30	19.00	M40-1101800
19	18.00	22.00	19.30	20.00	M40-1101900
20	19.00	23.00	20.30	21.00	M40-1102000
24	23.00	27.00	24.30	25.00	M40-1102400

Leo	3	08.02.18	A529
NAME	ISS.	DATE	C/NOTE
APPROVED:		B.Lim	
CHECKED:		D.P	
DRAWN:		Leo	
CUSTOMER REF.:			
ASSEMBLY DRG:			

# HARWIN

HARWIN USA  
TEL: 603 893 5376  
FAX: 603 893 5396  
mis@harwin.com

HARWIN Europe (UK)  
TEL: 023 9231 4545  
FAX: 023 9231 4590  
mis@harwin.co.uk

HARWIN Asia  
TEL: +65 6 779 4909  
FAX: +65 6 779 3868  
mis@harwin.com.sg

THIS DRAWING AND ANY INFORMATION OR DESCRIPTIVE MATTER SET OUT HEREON ARE CONFIDENTIAL AND COPYRIGHT PROPERTY OF THE HARWIN GROUP AND MUST NOT BE DISCLOSED, LOANED, COPIED OR USED FOR MANUFACTURING, TENDERING OR FOR ANY OTHER PURPOSE WITHOUT THEIR WRITTEN PERMISSION.

TOLERANCES  
X. = ±0.30mm  
X.X = ±0.25mm  
X.XX = ±0.15mm  
X.XXX = ±0.08mm  
ANGLES = ±3'  
UNLESS STATED

MATERIAL:  
SEE NOTES  
FINISH:  
SEE NOTES  
S/AREA: mm<sup>2</sup>

TITLE:  
HOUSING FOR CABLE TO BOARD  
P=1.00mm WITH EAR TYPE  
DRAWING NUMBER:  
M40-110 XX 00  
SHT  
1  
OF  
1

# Mouser Electronics

Authorized Distributor

Click to View Pricing, Inventory, Delivery & Lifecycle Information:

[Harwin:](#)

[M40-1101300](#) [M40-1100900](#) [M40-1100500](#) [M40-1100300](#) [M40-1101500](#) [M40-1101100](#) [M40-1100700](#) [M40-1100600](#) [M40-1101000](#) [M40-1100200](#) [M40-1101400](#) [M40-1101200](#) [M40-1100800](#) [M40-1100400](#)