

# REALTEK

## RTL8316C-GR

### 16-PORT 10/100 ETHERNET SWITCH CONTROLLER WITH EMBEDDED MEMORY

### DATASHEET

Rev. 1.0

06 December 2007

Track ID: JATR-1076-21



Realtek Semiconductor Corp.

No. 2, Innovation Road II, Hsinchu Science Park, Hsinchu 300, Taiwan

Tel.: +886-3-578-0211. Fax: +886-3-577-6047

[www.realtek.com.tw](http://www.realtek.com.tw)

**COPYRIGHT**

©2007 Realtek Semiconductor Corp. All rights reserved. No part of this document may be reproduced, transmitted, transcribed, stored in a retrieval system, or translated into any language in any form or by any means without the written permission of Realtek Semiconductor Corp.

**DISCLAIMER**

Realtek provides this document “as is”, without warranty of any kind, neither expressed nor implied, including, but not limited to, the particular purpose. Realtek may make improvements and/or changes in this document or in the product described in this document at any time. This document could include technical inaccuracies or typographical errors.

**TRADEMARKS**

Realtek is a trademark of Realtek Semiconductor Corporation. Other names mentioned in this document are trademarks/registered trademarks of their respective owners.

**USING THIS DOCUMENT**

This document is intended for the software engineer’s reference and provides detailed programming information.

Though every effort has been made to ensure that this document is current and accurate, more information may have become available subsequent to the production of this guide. In that event, please contact your Realtek representative for additional information that may help in the development process.

**REVISION HISTORY**

Revision	Release Date	Summary
1.0	2007/12/06	First release.

## Table of Contents

<b>1.</b>	<b>GENERAL DESCRIPTION .....</b>	<b>1</b>
<b>2.</b>	<b>FEATURES .....</b>	<b>2</b>
<b>3.</b>	<b>SYSTEM APPLICATIONS.....</b>	<b>3</b>
<b>4.</b>	<b>BLOCK DIAGRAM.....</b>	<b>3</b>
<b>5.</b>	<b>FUNCTIONAL BLOCK DIAGRAM .....</b>	<b>4</b>
<b>6.</b>	<b>PIN ASSIGNMENTS .....</b>	<b>5</b>
6.1.	PIN ASSIGNMENTS FIGURE.....	5
6.2.	PACKAGE IDENTIFICATION.....	5
6.3.	PIN ASSIGNMENTS TABLE (128-PIN PQFP) .....	6
6.4.	DRIVING CURRENT OF OUTPUT PINS.....	8
<b>7.</b>	<b>PIN DESCRIPTIONS.....</b>	<b>10</b>
7.1.	SMII INTERFACE.....	10
7.2.	SERIAL MANAGEMENT INTERFACE (SMI).....	11
7.3.	SERIAL EEPROM INTERFACE.....	11
7.4.	SYSTEM PINS.....	12
7.5.	MODE CONTROL PINS .....	12
7.6.	LED PINS.....	14
7.6.1.	<i>Scan LED Pins.....</i>	<i>14</i>
7.6.2.	<i>Serial LED Pins.....</i>	<i>15</i>
7.7.	POWER/GROUND PINS.....	16
7.8.	TEST PINS .....	16
<b>8.</b>	<b>FUNCTIONAL DESCRIPTION.....</b>	<b>17</b>
8.1.	RESET .....	17
8.1.1.	<i>Hardware Reset.....</i>	<i>17</i>
8.1.2.	<i>Software Reset.....</i>	<i>17</i>
8.2.	MAC TO PHY INTERFACE .....	17
8.3.	FAST ETHERNET PORT (SMII INTERFACE).....	17

8.4.	MAC ADDRESS TABLE SEARCH AND LEARNING .....	18
8.5.	MAC TABLE AGING FUNCTION .....	18
8.6.	ILLEGAL FRAME FILTERING .....	18
8.7.	IEEE 802.1D RESERVED GROUP ADDRESSES FILTERING CONTROL .....	18
8.8.	BACKOFF ALGORITHM .....	18
8.9.	INTER-PACKET GAP .....	19
8.10.	BUFFER MANAGEMENT .....	19
8.11.	FLOW CONTROL .....	19
8.11.1.	IEEE 802.3x Pause Flow Control.....	19
8.11.2.	Half Duplex Back Pressure Flow Control.....	20
8.12.	BROADCAST STORM FILTERING CONTROL.....	20
8.13.	HEAD-OF-LINE BLOCKING PREVENTION .....	20
8.14.	PORT TRUNKING AND FAULT RECOVERY SUPPORT .....	21
8.14.1.	Load Balancing.....	21
8.14.2.	Trunk Fault Auto Recovery.....	21
8.15.	IGMP SNOOPING SUPPORT .....	22
8.16.	VLAN FUNCTION .....	22
8.16.1.	Port-Based VLAN .....	23
8.16.2.	IEEE 802.1Q Tag-Based VLAN.....	23
8.16.3.	Ingress/Egress Filtering Control Parameters.....	23
8.16.4.	Leaky VLAN.....	24
8.16.5.	Insert/Remove VLAN Priority Tag.....	24
8.17.	QoS FUNCTION .....	25
8.17.1.	Port-Based Priority .....	25
8.17.2.	IEEE 802.1p/Q-Based Priority.....	25
8.17.3.	Differentiated Services Based Priority .....	25
8.17.4.	Flow Control Auto Turn Off.....	26
8.18.	INGRESS AND EGRESS BANDWIDTH CONTROL .....	26
8.19.	SIMPLE MIB COUNTER SUPPORT .....	27
8.20.	NETWORK LOOP CONNECTION FAULT DETECTION .....	27
8.21.	REALTEK ECHO PROTOCOL.....	28
8.22.	DISABLE PORT .....	28
8.23.	PORT PROPERTIES CONFIGURATION.....	29
8.24.	SERIAL CPU INTERFACE .....	30
8.24.1.	Serial-CPU Access Format.....	30

8.25.	PHY SERIAL MANAGEMENT INTERFACE .....	32
8.25.1.	<i>SMI (MDC, MDIO) Interface</i> .....	33
8.25.2.	<i>PHY Register Indirect Access</i> .....	33
8.26.	LED INTERFACES.....	33
8.27.	PARALLEL LED INTERFACE.....	34
8.28.	SERIAL LED INTERFACE.....	34
8.28.1.	<i>Serial LED Display Panel Example (4 LEDs, Register 0x0005)</i> .....	35
8.28.2.	<i>Serial LED Shift Out Sequence Order</i> .....	36
8.28.3.	<i>Serial LED Bi-Color LED Mode</i> .....	36
8.29.	SCAN LED INTERFACE.....	37
8.29.1.	<i>Scan LED Timing Diagram</i> .....	38
8.29.2.	<i>SCAN LED Timing Details</i> .....	38
8.29.3.	<i>External Circuit for Scan LED</i> .....	40
8.30.	PORT MIRRORING .....	41
<b>9.</b>	<b>SERIAL EEPROM CONFIGURATION (24C04).....</b>	<b>42</b>
9.1.	EEPROM CONFIGURATION VS. INTERNAL REGISTER MAPPING.....	42
<b>10.</b>	<b>INTERNAL REGISTER DESCRIPTIONS .....</b>	<b>44</b>
10.1.	SYSTEM CONFIGURATION REGISTER.....	44
10.2.	SYSTEM STATUS REGISTER.....	44
10.3.	MANAGEMENT CONFIGURATION REGISTER.....	45
10.4.	ADDRESS LOOKUP TABLE (ALT) CONTROL REGISTER.....	46
10.5.	QUEUE CONTROL REGISTER .....	49
10.6.	PHY ACCESS CONTROL REGISTER .....	49
10.7.	PORT CONTROL REGISTER.....	49
10.8.	MIB COUNTER REGISTER .....	50
10.8.1.	<i>Port MIB Counter 1 Register (RX Counter) (32-bits)</i> .....	50
10.8.2.	<i>Port MIB Counter 2 Register (TX Counter) (32-bits)</i> .....	51
10.8.3.	<i>Port MIB Counter 3 Register (Diagnostic Counter) (32-bits)</i> .....	52
10.9.	SYSTEM PARAMETER REGISTER (RESERVED).....	52
<b>11.</b>	<b>INTERNAL REGISTER SETTINGS.....</b>	<b>53</b>
11.1.	SYSTEM CONFIGURATION REGISTER.....	53
11.1.1.	<i>0x0000H: System Reset Control Register</i> .....	53
11.1.2.	<i>0x0001H: Switch Parameter Register</i> .....	54

11.1.3.	0x0002H: EEPROM Check ID .....	54
11.1.4.	0x0004H: General Purpose User Defined I/O Data Register .....	55
11.1.5.	0x0005H: LED Display Configuration .....	55
11.2.	SYSTEM STATUS REGISTER .....	56
11.2.1.	0x0100H: Board Trapping Status Register .....	56
11.2.2.	0x0101H: Loop Detect Status Register (32-Bit Register) .....	56
11.2.3.	0x0102H: System Fault Indication Register .....	56
11.3.	MANAGEMENT CONFIGURATION REGISTER .....	57
11.3.1.	0x0200H: Realtek Protocol Control Register .....	57
11.3.2.	0x0203H: Switch MAC ID Register 0 .....	58
11.3.3.	0x0204H: Switch MAC ID Register 1 .....	58
11.3.4.	0x0205H: Switch MAC ID Register 2 .....	58
11.3.5.	0x0206H: Chip Model ID .....	58
11.4.	0x0207H: SYSTEM VENDER ID REGISTER 0 .....	58
11.5.	0x0208H: SYSTEM VENDER ID REGISTER 1 .....	59
11.6.	0x020AH: PORT 0, 1 BANDWIDTH CONTROL REGISTER .....	59
11.6.1.	0x020BH~0x0211H: Port 2~15 Bandwidth Control Register .....	60
11.7.	0x0217H~0x0218: EEPROM RW CONTROL REGISTER .....	60
11.7.1.	0x0217H: EEPROM RW Command Register .....	60
11.7.2.	0x0218H: EEPROM RW Data Register .....	60
11.8.	0x0219H~0x021EH: PORT MIRROR CONTROL REGISTER .....	61
11.8.1.	0x0219H: Port Mirror Control Register 0 for P15-P0 .....	61
11.8.2.	0x021BH: RX Mirror Port Register 0 for P15-P0 .....	61
11.8.3.	0x021DH: TX Mirror Port Register 0 for P15-P0 .....	61
11.9.	ADDRESS LOOKUP TABLE (ALT) CONTROL REGISTER .....	61
11.9.1.	0x0300H: ALT Configuration Register .....	61
11.9.2.	0x0301H: Address Learning Control Register 0 .....	62
11.9.3.	0x0307H: Port Trunking Configuration Register .....	62
11.9.4.	0x0308H: IGMP Snooping Control Register .....	62
11.9.5.	0x0309H: IP Multicast Router Port Discovery Register (32 bits) .....	63
11.9.6.	0x030BH: VLAN Control Register .....	63
11.9.7.	0x030C~0x0313H: Port VLAN ID Assignment Index Register 0~7 .....	64
11.9.8.	0x0319~0x031AH: VLAN Output Port Priority-Tagging Control Register 0, 1 .....	65
11.10.	0x031D~0x037CH: VLAN TABLE CONFIGURATION REGISTER .....	66
11.10.1.	Register VLAN(m)_Entry_Configuration_0 (Addr: (0x031DH+3m)) .....	66

11.10.2.	Register VLAN(m)_Entry_Configuration_2 (Addr: (0x031DH+3m+2)) .....	66
11.11.	0x037D: INSERT PER-PORT VID (PVID) ENABLING REGISTER 0 .....	66
11.12.	QoS CONFIGURATION REGISTER.....	67
11.12.1.	0x0400H: QoS Control Register.....	67
11.12.2.	0x0401: Port Priority Configuration Register 0.....	68
11.13.	PHY ACCESS CONTROL REGISTER.....	68
11.13.1.	0x0500H: PHY Access Control Register .....	68
11.13.2.	0x0501H: PHY Access Write Data Register.....	68
11.13.3.	0x0502H: PHY Access Read Data Register.....	68
11.14.	PORT CONTROL REGISTER .....	69
11.14.1.	0x0607H: Global Port Control Register.....	69
11.14.2.	0x0608H: Port Disable Control Register 0 .....	70
11.14.3.	0x060AH~0x0615: Port Property Configuration Registers 0 ~ 7.....	70
11.14.4.	0x0619H~0x0624: Port Link Status Register 0 ~ 7.....	71
<b>12.</b>	<b>MIB COUNTER REGISTER.....</b>	<b>73</b>
12.1.	0x0700H~0x0707H: PORT MIB COUNTER OBJECT SELECTION REGISTER 0~7 .....	73
12.2.	0x070DH~071CH: PORT MIB COUNTER 1 REGISTER (RX COUNTER) (32 BITS) .....	74
12.2.1.	For Port(n) MIB Counter 1 Register (32-bit). n=0, 1, 2, ... 15 (Addr: 0x070DH+n) .....	74
12.2.2.	0x0727~0736H: Port MIB Counter 2 Register (TX Counter) (32-bits).....	74
12.2.3.	0x0741~0750H: Port MIB Counter 3 Register (Diagnostic Counter) (32-bits) .....	75
<b>13.</b>	<b>CHARACTERISTICS.....</b>	<b>75</b>
13.1.	ABSOLUTE MAXIMUM RATINGS .....	75
13.2.	OPERATING RANGE.....	75
13.3.	DC CHARACTERISTICS.....	76
13.3.1.	DC Characteristics at 3.3V.....	76
13.3.2.	DC Characteristics at 2.5V.....	76
13.4.	AC CHARACTERISTICS.....	77
13.4.1.	PHY Management (SMI) Timing .....	77
13.4.2.	SMII Transmit Timing.....	78
13.4.3.	SMII Receive Timing.....	78
<b>14.</b>	<b>THERMAL DATA.....</b>	<b>79</b>

---

<b>15.</b>	<b>MECHANICAL INFORMATION</b> .....	<b>80</b>
15.1.	MECHANICAL DIMENSIONS NOTES .....	81
<b>16.</b>	<b>ORDERING INFORMATION</b> .....	<b>81</b>

---



## List of Tables

TABLE 1. PIN ASSIGNMENT TABLE (PQFP-128).....	6
TABLE 2. DRIVING CURRENT OF OUTPUT PINS.....	8
TABLE 3. SMI INTERFACE.....	10
TABLE 4. SERIAL MANAGEMENT INTERFACE (SMI).....	11
TABLE 5. SERIAL EEPROM INTERFACE.....	11
TABLE 6. SYSTEM PINS.....	12
TABLE 7. MODE CONTROL PINS.....	12
TABLE 8. SCAN LED PINS.....	14
TABLE 9. SERIAL LED PINS.....	15
TABLE 10. POWER/GROUND PINS.....	16
TABLE 11. TEST PINS.....	16
TABLE 12. VLAN TABLE FORMAT.....	22
TABLE 13. MIB OBJECT SELECTION.....	27
TABLE 14. LOOP DETECT PACKET FORMAT.....	27
TABLE 15. CONFIGURING PAUSE AND ASYMMETRIC PAUSE.....	29
TABLE 16. TX/RX PAUSE ABILITY IN FORCED MODE.....	29
TABLE 17. SERIAL CPU 16-BIT READ/WRITE FORMAT.....	32
TABLE 18. SERIAL CPU 32-BIT READ FORMAT.....	32
TABLE 19. SMI (MDC, MDIO) MANAGEMENT PACKET FORMAT.....	33
TABLE 20. SERIAL LED INTERFACE.....	34
TABLE 21. DIAGNOSTIC LED DISPLAY.....	34
TABLE 22. SCAN LED STATUS.....	37
TABLE 23. SCAN LED TIMING INFORMATION.....	38
TABLE 24. PORT MIRROR CONTROL REGISTER FOR P15-P0.....	41
TABLE 25. RX MIRROR PORT REGISTER FOR P15-P0.....	41
TABLE 26. TX MIRROR PORT REGISTER FOR P15-P0.....	41
TABLE 27. EEPROM CONFIGURATION VS. INTERNAL REGISTER MAPPING.....	42
TABLE 28. SYSTEM CONFIGURATION REGISTER.....	44
TABLE 29. SYSTEM STATUS REGISTER.....	44
TABLE 30. MANAGEMENT CONFIGURATION REGISTER.....	45
TABLE 31. ADDRESS LOOKUP TABLE (ALT) CONTROL REGISTER.....	46
TABLE 32. QUEUE CONTROL REGISTER.....	49

TABLE 33. PHY ACCESS CONTROL REGISTER .....	49
TABLE 34. PORT CONTROL REGISTER .....	49
TABLE 35. MIB COUNTER REGISTER .....	50
TABLE 36. PORT MIB COUNTER 1 REGISTER (RX COUNTER) (32-BITS) .....	50
TABLE 37. PORT MIB COUNTER 2 REGISTER (TX COUNTER) (32-BITS) .....	51
TABLE 38. PORT MIB COUNTER 3 REGISTER (DIAGNOSTIC COUNTER) (32-BITS) .....	52
TABLE 39. SYSTEM PARAMETER REGISTER (RESERVED) .....	52
TABLE 40. 0x0000H: SYSTEM RESET CONTROL REGISTER.....	53
TABLE 41. 0x0001H: SWITCH PARAMETER REGISTER.....	54
TABLE 42. 0x0002H: EEPROM CHECK ID .....	54
TABLE 43. 0x0004H: GENERAL PURPOSE USER DEFINED I/O DATA REGISTER.....	55
TABLE 44. 0x0005H: LED DISPLAY CONFIGURATION .....	55
TABLE 45. 0x0100H: BOARD TRAPPING STATUS REGISTER .....	56
TABLE 46. 0x0101H: LOOP DETECT STATUS REGISTER (32-BIT REGISTER).....	56
TABLE 47. 0x0102H: SYSTEM FAULT INDICATION REGISTER.....	56
TABLE 48. 0x0200H: REALTEK PROTOCOL CONTROL REGISTER.....	57
TABLE 49. 0x0203H: SWITCH MAC ID REGISTER 0 .....	58
TABLE 50. 0x0204H: SWITCH MAC ID REGISTER 1 .....	58
TABLE 51. 0x0205H: SWITCH MAC ID REGISTER 2.....	58
TABLE 52. 0x0206H: CHIP MODEL ID .....	58
TABLE 53. 0x0207H: SYSTEM VENDER ID REGISTER 0 .....	58
TABLE 54. 0x0208H: SYSTEM VENDER ID REGISTER 1 .....	59
TABLE 55. 0x020AH: PORT 0, 1 BANDWIDTH CONTROL REGISTER.....	59
TABLE 56. 0x020BH~0x0215H: PORT 2~15 BANDWIDTH CONTROL REGISTER .....	60
TABLE 57. 0x0217H: EEPROM RW COMMAND REGISTER .....	60
TABLE 58. 0x0218H: EEPROM RW DATA REGISTER .....	60
TABLE 59. PORT MIRROR CONTROL REGISTER FOR P15-P0.....	61
TABLE 60. RX MIRROR PORT REGISTER 0 FOR P15-P0.....	61
TABLE 61. TX MIRROR PORT REGISTER 0 FOR P15-P0 .....	61
TABLE 62. 0x0300H: ALT CONFIGURATION REGISTER.....	61
TABLE 63. 0x0301H: ADDRESS LEARNING CONTROL REGISTER 0 .....	62
TABLE 64. 0x0307H: PORT TRUNKING CONFIGURATION REGISTER .....	62
TABLE 65. 0x0308H: IGMP SNOOPING CONTROL REGISTER .....	62
TABLE 66. 0x0309H: IP MULTICAST ROUTER PORT DISCOVERY REGISTER (32 BITS).....	63
TABLE 67. 0x030BH: VLAN CONTROL REGISTER.....	63

TABLE 68. 0x030C~0x0317H: PORT VLAN ID ASSIGNMENT INDEX REGISTER 0~7 .....	64
TABLE 69. 0x0319~0x031AH: VLAN OUTPUT PORT PRIORITY-TAGGING CONTROL REGISTER 0, 1 .....	65
TABLE 70. REGISTER VLAN(M)_ENTRY_CONFIGURATION_0 (ADDR: (0x031DH+3M)) .....	66
TABLE 71. REGISTER VLAN(M)_ENTRY_CONFIGURATION_2 (ADDR: (0x031DH+3M+2)) .....	66
TABLE 72. INSERT PER-PORT VID (PVID) ENABLING REGISTER 0 .....	66
TABLE 73. 0x0400H: QoS CONTROL REGISTER .....	67
TABLE 74. 0x0401: PORT PRIORITY CONFIGURATION REGISTER 0 .....	68
TABLE 75. 0x0500H: PHY ACCESS CONTROL REGISTER .....	68
TABLE 76. 0x0501H: PHY ACCESS WRITE DATA REGISTER .....	68
TABLE 77. 0x0502H: PHY ACCESS READ DATA REGISTER .....	68
TABLE 78. 0x0607H: GLOBAL PORT CONTROL REGISTER .....	69
TABLE 79. 0x0608H: PORT DISABLE CONTROL REGISTER 0 .....	70
TABLE 80. 0x060AH~0x0615. PORT PROPERTY CONFIGURATION REGISTER 0~7 .....	70
TABLE 81. 0x0619H~0x0625. PORT LINK STATUS REGISTER 0~7 .....	71
TABLE 82. 0x0700H~0x0707H: PORT MIB COUNTER OBJECT SELECTION REGISTER 0~7 .....	73
TABLE 83. MIB COUNTER TIMEOUT .....	74
TABLE 84. 0x070DH~071CH: PORT MIB COUNTER 1 REGISTER (RX COUNTER) (32 BITS) .....	74
TABLE 85. 0x0727~0736H: PORT MIB COUNTER 2 REGISTER (TX COUNTER) (32 BITS) .....	74
TABLE 86. 0x0741~0750H: PORT MIB COUNTER 3 REGISTER (DIAGNOSTIC COUNTER) (32 BITS) .....	75
TABLE 87. ABSOLUTE MAXIMUM RATINGS .....	75
TABLE 88. OPERATING RANGE AT 3.3V .....	75
TABLE 89. OPERATING RANGE AT 2.5V .....	75
TABLE 90. DC CHARACTERISTICS AT 3.3V .....	76
TABLE 91. DC CHARACTERISTICS AT 2.5V .....	76
TABLE 92. PHY MANAGEMENT (SMI) TIMING .....	77
TABLE 93. PHY MANAGEMENT (SMI) TIMING .....	78
TABLE 94. SMII RECEIVE TIMING .....	78
TABLE 95. THERMAL OPERATING RANGE .....	79
TABLE 96. THERMAL RESISTANCE .....	79
TABLE 97. ORDERING INFORMATION .....	81

---

## List of Figures

---

FIGURE 1. BLOCK DIAGRAM.....	3
FIGURE 2. FUNCTIONAL BLOCK DIAGRAM .....	4
FIGURE 3. PIN ASSIGNMENTS .....	5
FIGURE 4. 802.1Q VLAN TAG FRAME FORMAT.....	26
FIGURE 5. IPV4 FRAME FORMAT .....	26
FIGURE 6. REALTEK ECHO PROTOCOL FRAME .....	28
FIGURE 7. SERIAL CPU INTERFACE .....	30
FIGURE 8. START AND STOP DEFINITION .....	31
FIGURE 9. OUTPUT ACKNOWLEDGE (ACK).....	31
FIGURE 10. SERIAL LED DISPLAY .....	35
FIGURE 11. 3-BIT SERIAL STREAM MODE .....	36
FIGURE 12. SCAN LED TIMING DIAGRAM .....	38
FIGURE 13. SCAN LED TIMING INFORMATION (1) .....	39
FIGURE 14. SCAN LED TIMING INFORMATION (2) .....	39
FIGURE 15. SCAN LED TIMING INFORMATION (3) .....	39
FIGURE 16. EXTERNAL CIRCUIT FOR SCAN LED.....	40
FIGURE 17. MDC/MDIO WRITE TIMING .....	77
FIGURE 18. MDC/MDIO READ TIMING.....	77
FIGURE 19. MDC/MDIO RESET TIMING.....	77
FIGURE 20. SMII TRANSMIT TIMING.....	78
FIGURE 21. SMII RECEIVE TIMING .....	78
FIGURE 22. CROSS-SECTION OF 128-PIN PQFP.....	79

---

## 1. General Description

The RTL8316C is a layer-2 switch controller that integrates 1.25Mbits of high-speed SSRAM, an 8K-entry MAC address lookup table, 16 Ethernet/Fast Ethernet MACs, and a switch engine into one chip.

The Remote Management Tool (RMT) software package is bundled with the RTL8316C. The RMT is a Windows-based tool developed to enhance the functionality of Realtek's dumb layer 2 switches via software. The RMT gives network administrators the ability to remotely configure and monitor dumb layer 2 switches as though they were intelligent switches. With QoS, Trunking, VLAN, bandwidth control, remote control, and an 0.16 $\mu$ m process, the RTL8316C is a cost effective switch controller for a 16-port 10/100 dumb or smart switch application.

Port trunking is supported on all ports to increase bandwidth. Load balancing and fault tolerance provide top performance and reliability. The RTL8316C provides 2-level priority queues for multimedia or real-time network applications. The CoS (Class of Service) can be port-based, IEEE 802.1p tag-based, and/or TCP/IP header TOS/DS field-based. The RTL8316C supports up to 32 VLAN groups that may be configured as port-based VLANs and/or IEEE 802.1Q tagged VLANs. ARP broadcast and Leaky VLAN are also supported.

The RTL8316C supports diagnostics and analysis. Counters are included for: RX byte count, RX packet count, TX byte count, TX packet count, CRC error packet count, collision packet count, dropped packet count, and dropped byte count. The RTL8316C supports TX and RX bandwidth control on each port; 128Kbps, 256Kbps, 512kbps, 1Mbps, 2Mbps, 4Mbps, or 8Mbps may be selected in each direction.

The RTL8316C provides for a Scan LED Group to display each port's status, without extra component cost. A loop-detection function is provided to notify whether a network loop exists, either via a visual LED, or via a register flag for smart applications. LED displays for broadcast storm, trunking status, flow control, and traffic utilization are also provided.

Maximum packet length can be up to 1552 bytes. The RTL8316C supports the ability to drop 802.1D specified reserved group MAC addresses: (01-80-C2-00-00-04 to 01-80-C2-00-00-0F) according to pin strapping upon reset, or register setting. The RTL8316C default setting enables dropping of these reserved group MAC address control frames. Frames with group MAC address 01-80-C2-00-00-01 (802.3x Pause), 01-80-C2-00-00-02 (802.3ad LACP) will always be filtered.

The RTL8316C supports IEEE 802.3x full duplex flow control and back pressure half duplex flow control. Full duplex flow control can be disabled both manually or automatically to ensure QoS control or bandwidth control operates correctly. Broadcast storm filtering prevents network crashes caused by abnormal broadcast activity.

As well as supporting IEEE 802.3u auto-negotiation, the RTL8316C supports PHY Read/Write registers to access PHY registers through an MDC/MDIO interface. This expands system configuration options.

The RTL8316C is designed with a link-list buffer management architecture and provides 3.2Gbps of bandwidth to achieve wire-speed performance. It also has an intelligent switching engine to prevent Head-of-Line blocking. Only a single 25MHz crystal is required for clock generation.

The RTL8316C offers packet buffer fine-tune capabilities, which increase flexibility when QoS is enabled, and also features EEPROM auto-download (0x61).

## 2. Features

- 16-port 10/100Mbps layer-2 Ethernet switch controller with embedded lookup table and packet buffer
- Supports SMII on all ports
- Built-in 8K entry MAC address lookup table plus 64-entry CAM to eliminate hash collision problems
- Built-in 1.25Mbit SSRAM packet buffer
- Non-blocking wire-speed forwarding and filtering (3.2Gbps throughput)
- Store and forward architecture and head-of-line blocking prevention
- All ports support Speed, Duplex, and 802.3x flow-control ability auto-negotiation
- Supports broadcast storm filtering control
- Supports Trunking function with load balancing and fault tolerance
- Supports up to 32 VLAN groups for port-based VLAN and 802.1Q tag VLAN
- Supports Leaky VLAN
- Two priority queues for three types of Class of Service (CoS)
  - ◆ Port-based
  - ◆ IEEE 802.1p priority tag
  - ◆ TCP/IP header's TOS/DS classifier
- Weighted round robin queue scheduling
- Priority tag insert and remove function
- Supports ASIC based IGMPv1 snooping function
- Supports pin strapping, EEPROM, or serial CPU configuration interface
- Supports PHY register read/write access
- Supports Realtek Management Tool (RMT<sup>®</sup>) for in-band configuration and management
- Supports simple MIB counters
- TX/RX packet/byte, CRC error, and collision counter for diagnostics/statistics
- Supports per-port bandwidth control
- Supports loop detection and indication function
- Provides Scan LED, serial LED, and parallel LED interface for port properties and diagnostic display
- Provides Write EEPROM function via software (RMT<sup>®</sup> or MPU) for Smart Switch application.
- Provides configurable Port Mirror function.
- Needs only one low-cost 25MHz crystal or OSC input
- 0.16μm, 128-pin PQFP, 3.3V or 2.5V single power, 5V I/O tolerance

### 3. System Applications

- 10/100Mbps switch controller for a 16-port 10/100 dumb or smart switch application.

### 4. Block Diagram

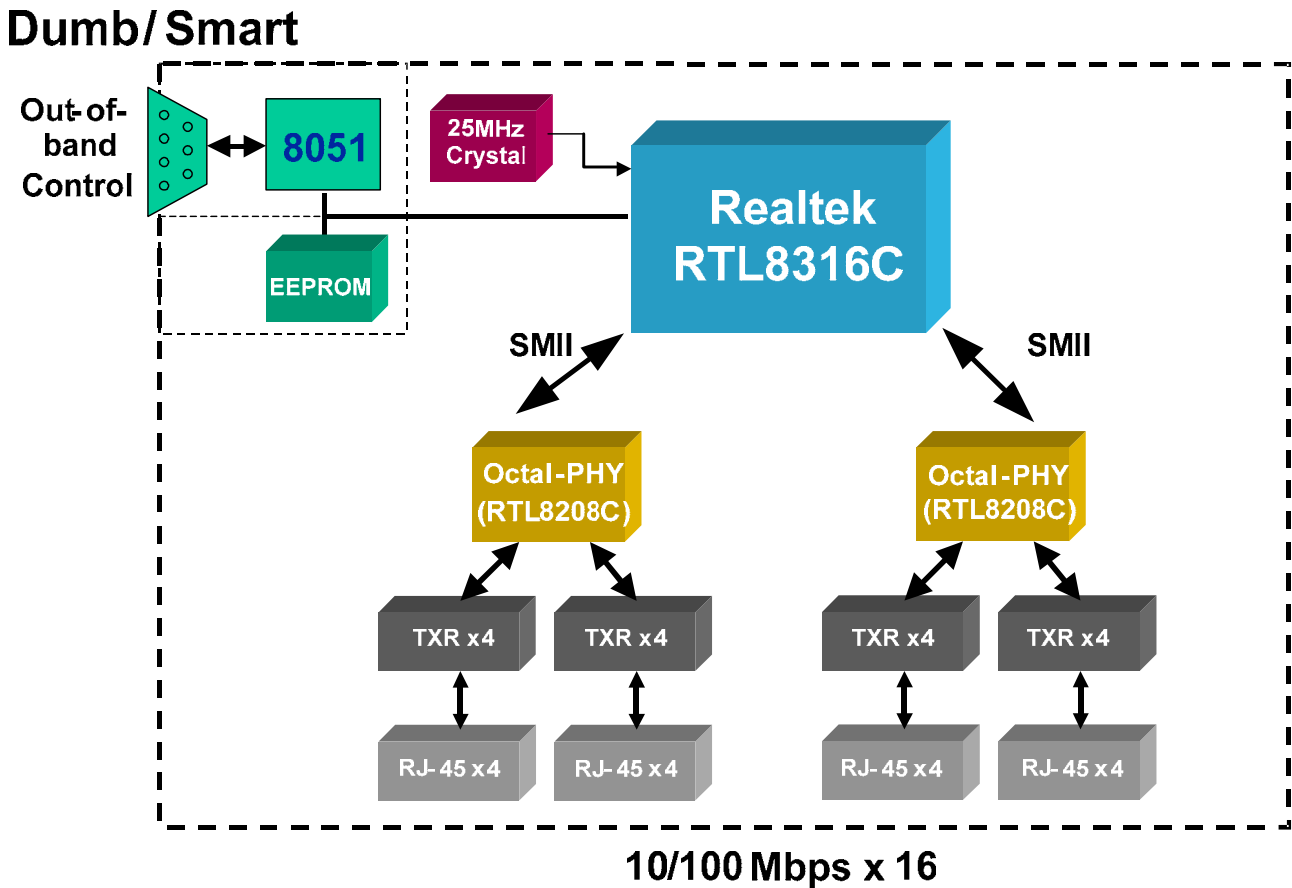


Figure 1. Block Diagram

## 5. Functional Block Diagram

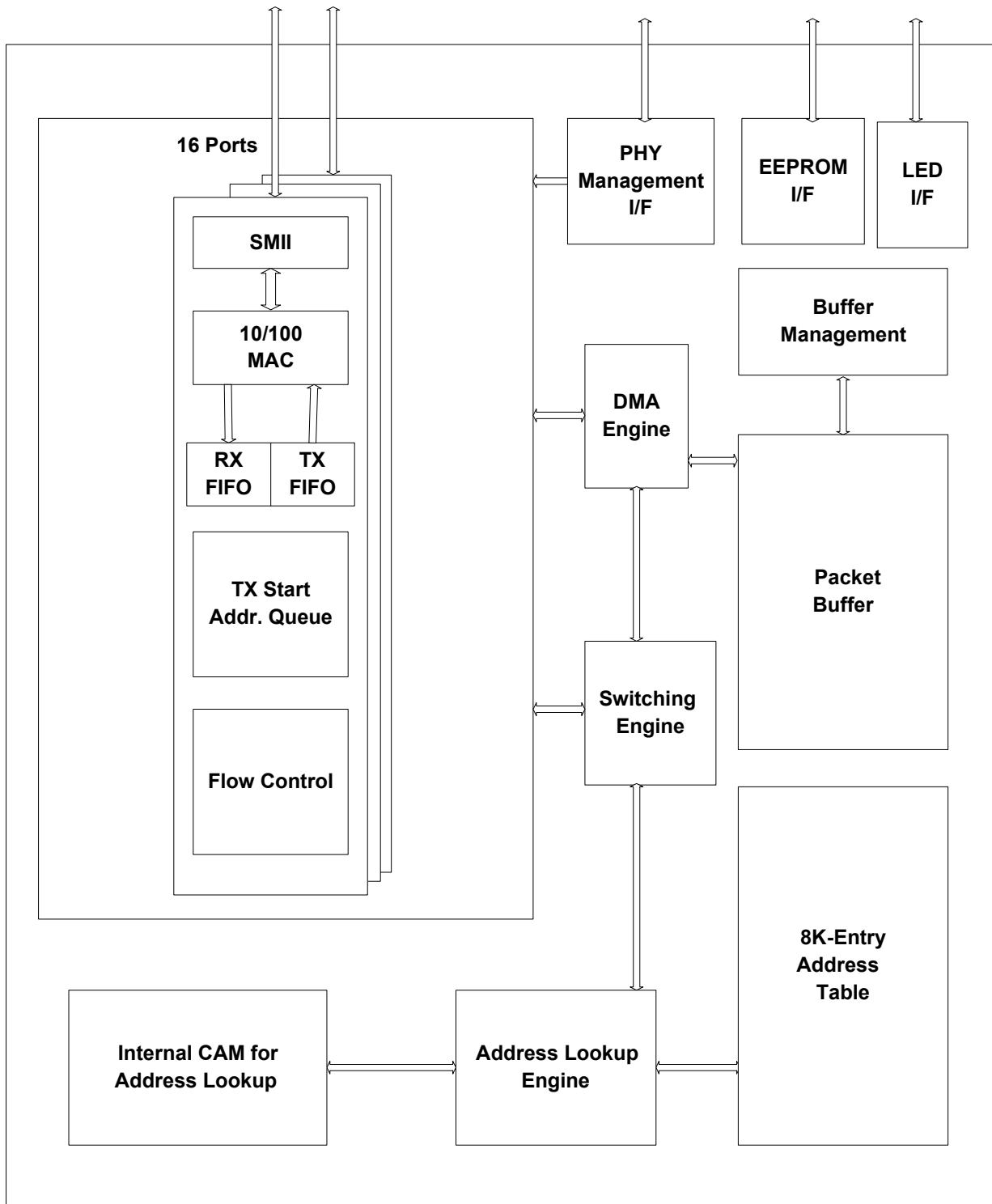


Figure 2. Functional Block Diagram



## 6. Pin Assignments

### 6.1. Pin Assignments Figure

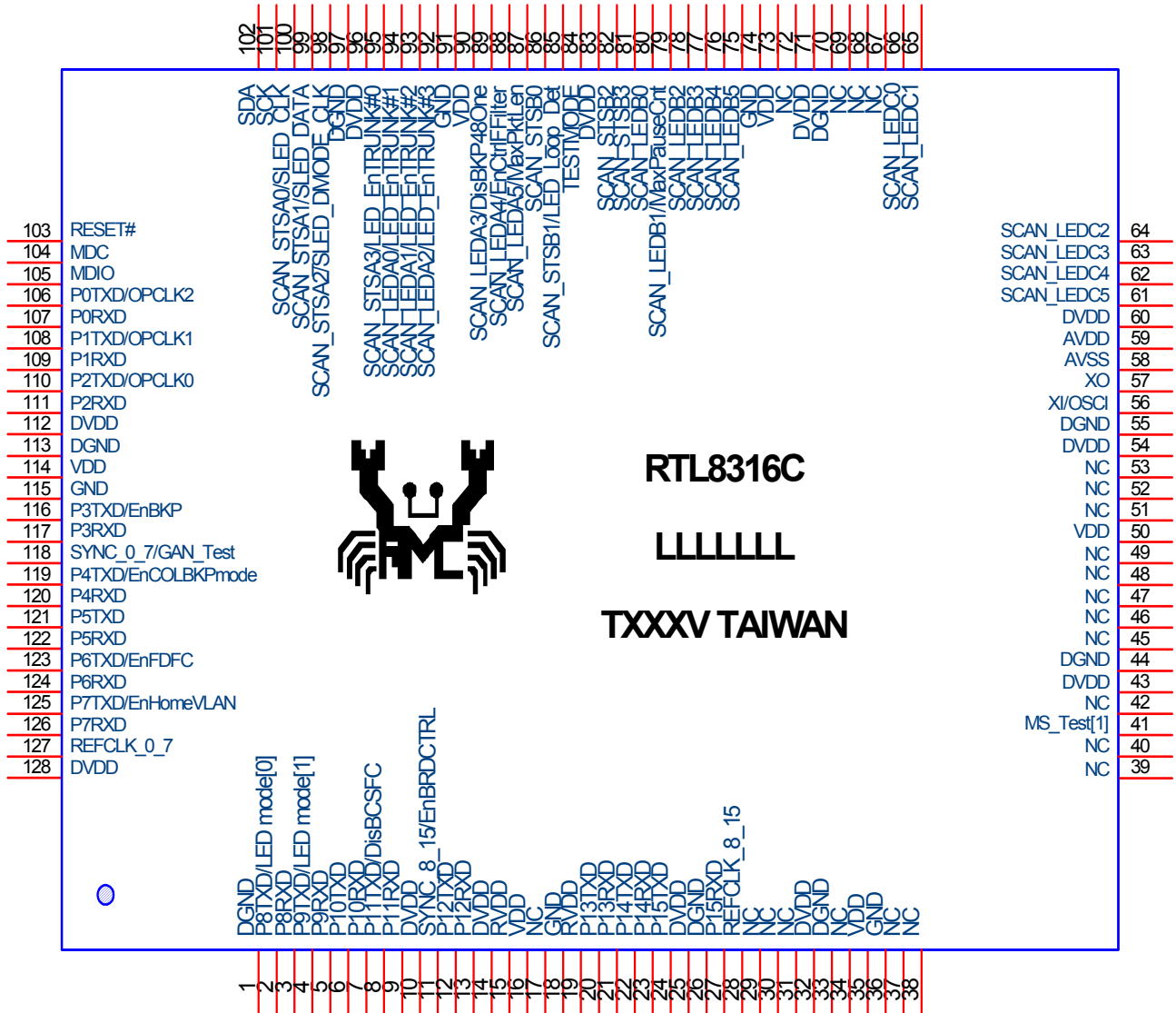


Figure 3. Pin Assignments

### 6.2. Package Identification

Green package is indicated by a ‘G’ in the location marked ‘T’ in Figure 3.

### 6.3. Pin Assignments Table (128-Pin PQFP)

Type codes used: P=Power; G=Ground, I=Input, O=Output. PU=Internal Pull-up. PD=Internal Pull-down. Internal resistor = 40K $\Omega$

**Table 1. Pin Assignment Table (PQFP-128)**

Pin No.	Type	Pin Name	Pin No.	Type	Pin Name
1	G	DGND	38	I <sub>PD</sub>	NC
2	I/O <sub>PU</sub>	P8TXD/LED mode[0]	39	O <sub>PU</sub>	NC
3	I <sub>PD</sub>	P8RXD	40	I <sub>PU</sub>	NC
4	I/O <sub>PD</sub>	P9TXD/LED mode[1]	41	I/O <sub>PU</sub>	MS_Test[1]
5	I <sub>PU</sub>	P9RXD	42	O <sub>PU</sub>	NC
6	O <sub>PU</sub>	P10TXD	43	P	DVDD
7	I <sub>PD</sub>	P10RXD	44	G	DGND
8	O <sub>PD</sub>	P11TXD/DisBCSFC	45	I <sub>PD</sub>	NC
9	I <sub>PD</sub>	P11RXD	46	O <sub>PD</sub>	NC
10	P	DVDD	47	I <sub>PD</sub>	NC
11	I/O <sub>PD</sub>	SYNC_8_15/EnBRDCTRL	48	O <sub>PD</sub>	NC
12	O <sub>PD</sub>	P12TXD	49	I <sub>PD</sub>	NC
13	I <sub>PD</sub>	P12RXD	50	P	VDD
14	P	DVDD	51	O <sub>PD</sub>	NC
15	P	RVDD	52	I <sub>PD</sub>	NC
16	P	VDD	53	O <sub>PD</sub>	NC
17	-	NC	54	P	DVDD
18	G	GND	55	G	DGND
19	P	RVDD	56	I	XI/OSCI
20	O <sub>PD</sub>	P13TXD	57	O	XO
21	I <sub>PD</sub>	P13RXD	58	G	AVSS
22	O <sub>PD</sub>	P14TXD	59	P	AVDD
23	I <sub>PD</sub>	P14RXD	60	P	DVDD
24	O <sub>PD</sub>	P15TXD	61	O <sub>PU</sub>	SCAN_LEDC5
25	P	DVDD	62	O <sub>PU</sub>	SCAN_LEDC4
26	G	DGND	63	O <sub>PU</sub>	SCAN_LEDC3
27	I <sub>PD</sub>	P15RXD	64	O <sub>PU</sub>	SCAN_LEDC2
28	O <sub>PD</sub>	REFCLK_8_15	65	O <sub>PU</sub>	SCAN_LEDC1
29	O <sub>PD</sub>	NC	66	O <sub>PU</sub>	SCAN_LEDC0
30	I <sub>PD</sub>	NC	67	O <sub>PU</sub>	NC
31	O <sub>PD</sub>	NC	68	O <sub>PU</sub>	NC
32	P	DVDD	69	O <sub>PU</sub>	NC
33	G	DGND	70	G	DGND
34	I <sub>PD</sub>	NC	71	P	DVDD
35	P	VDD	72	O <sub>PU</sub>	NC
36	G	GND	73	P	VDD
37	O <sub>PU</sub>	NC	74	G	GND

Pin No.	Type	Pin Name
75	O <sub>PU</sub>	SCAN_LEDB5
76	O <sub>PD</sub>	SCAN_LEDB4
77	O <sub>PD</sub>	SCAN_LEDB3
78	O <sub>PD</sub>	SCAN_LEDB2
79	I/O <sub>PD</sub>	SCAN_LEDB1/MaxPauseCnt
80	O <sub>PU</sub>	SCAN_LEDB0
81	O <sub>PU</sub>	SCAN_STSB3
82	O <sub>PU</sub>	SCAN_STSB2
83	G	DVDD
84	O	TESTMODE
85	O <sub>PU</sub>	SCAN_STSB1/LED_Loop_Det
86	O <sub>PU</sub>	SCAN_STSB0
87	I/O <sub>PD</sub>	SCAN_LEDA5/MaxPktLen
88	I/O <sub>PD</sub>	SCAN_LEDA4/EnCtrlFFilter
89	I/O <sub>PU</sub>	SCAN_LEDA3/DisBKP48One
90	P	VDD
91	G	GND
92	O <sub>PU</sub>	SCAN_LEDA2/LED_EnTRUNK# 3
93	O <sub>PU</sub>	SCAN_LEDA1/LED_EnTRUNK# 2
94	O <sub>PU</sub>	SCAN_LEDA0/LED_EnTRUNK# 1
95	O <sub>PU</sub>	SCAN_STSA3/LED_EnTRUNK# 0
96	P	DVDD
97	G	DGND
98	O <sub>PU</sub>	SCAN_STSA2/SLED_DMODE _CLK
99	O <sub>PU</sub>	SCAN_STSA1/SLED_DATA
100	O <sub>PU</sub>	SCAN_STSA0/SLED_CLK

Pin No.	Type	Pin Name
101	I/O <sub>PU</sub>	SCK
102	I/O <sub>PU</sub>	SDA
103	I <sub>PU</sub>	RESET#
104	O <sub>PU</sub>	MDC
105	I/O <sub>PU</sub>	MDIO
106	O <sub>PL</sub>	P0TXD/OPCLK2
107	I <sub>PL</sub>	P0RXD
108	O <sub>PL</sub>	P1TXD/OPCLK1
109	I <sub>PL</sub>	P1RXD
110	O <sub>PL</sub>	P2TXD/OPCLK0
111	I <sub>PU</sub>	P2RXD
112	P	DVDD
113	G	DGND
114	P	VDD
115	G	GND
116	I/O <sub>PU</sub>	P3TXD/EnBKP
117	I <sub>PU</sub>	P3RXD
118	I/O <sub>PU</sub>	SYNC_0_7/GAN_Test
119	I/O <sub>PD</sub>	P4TXD/EnCOLBKPmode
120	I <sub>PD</sub>	P4RXD
121	O <sub>PD</sub>	P5TXD
122	I <sub>PD</sub>	P5RXD
123	I/O <sub>PU</sub>	P6TXD/EnFDFC
124	I <sub>PD</sub>	P6RXD
125	I/O <sub>PD</sub>	P7TXD/EnHomeVLAN
126	I <sub>PD</sub>	P7RXD
127	O <sub>PU</sub>	REFCLK_0_7
128	P	DVDD

## 6.4. Driving Current of Output Pins

**Table 2. Driving Current of Output Pins**

Pin No.	Driving Current (mA)	Pin Name
2	8	P8TXD/LED mode[0]
3	8	P8RXD
4	8	P9TXD/LED mode[1]
5	8	P9RXD
6	8	P10TXD
7	8	P10RXD
8	8	P11TXD/DisBCSFC
9	8	P11RXD
11	8	SYNC_8_15/EnBRDCTRL
12	16	P12TXD
13	2	P12RXD
20	8	P13TXD
21	4	P13RXD
22	8	P14TXD
23	2	P14RXD
24	8	P15TXD
27	4	P15RXD
28	16	REFCLK_8_15
41	8	MS_Test[1]
61	16	SCAN_LEDC5
62	16	SCAN_LEDC4
63	16	SCAN_LEDC3
64	16	SCAN_LEDC2
65	16	SCAN_LEDC1
66	16	SCAN_LEDC0
75	16	SCAN_LEDB5
76	16	SCAN_LEDB4
77	16	SCAN_LEDB3
78	16	SCAN_LEDB2
79	16	SCAN_LEDB1/MaxPauseCnt
80	16	SCAN_LEDB0
81	16	SCAN_STSB3
82	16	SCAN_STSB2
84	2	TESTMODE
85	16	SCAN_STSB1/LED_Loop_Det
86	16	SCAN_STSB0
87	16	SCAN_LEDA5/MaxPktLen
88	16	SCAN_LEDA4/EnCtrlFilter
89	16	SCAN_LEDA3/DisBKP48One
92	16	SCAN_LEDA2/LED_EnTRUNK#3
93	16	SCAN_LEDA1/LED_EnTRUNK#2

Pin No.	Driving Current (mA)	Pin Name
94	16	SCAN_LED_A0/LED_EnTRUNK#1
95	16	SCAN_STSA3/LED_EnTRUNK#0
98	16	SCAN_STSA2/SLED_DMODE_CLK
99	16	SCAN_STSA1/SLED_DATA
100	16	SCAN_STSA0/SLED_CLK
101	4	SCK
102	4	SDA
103	2	RESET#
104	8	MDC
105	4	MDIO
106	8	P0TXD/OPCLK2
107	4	P0RXD
108	8	P1TXD/OPCLK1
109	4	P1RXD
110	8	P2TXD/OPCLK0
111	2	P2RXD
116	8	P3TXD/EnBKP
117	4	P3RXD
118	8	SYNC_0_7/GAN_Test
119	8	P4TXD/EnCOLBKPmode
120	2	P4RXD
121	8	P5TXD
122	4	P5RXD
123	8	P6TXD/EnFDFC
124	4	P6RXD
125	8	P7TXD/EnHomeVLAN
126	2	P7RXD
127	16	REFCLK_0_7

## 7. Pin Descriptions

Type codes used: P=Power; G=Ground, I=Input, O=Output, PU=Internal pull up (40K ohm), PD=Internal pull down (40K ohm).

### 7.1. SMII Interface

**Table 3. SMII Interface**

Pin Name	Type	Pin No.	Description
P0TXD	O	106	SMII Transmit Data Output: SMII transmit data is formed in 10-bit serial words. Each word contains one data byte (two nibbles of 4B coded data) and two status bits. The SMII operates at 125MHz using a global reference clock (REFCLK) and frame synchronization signal (SYNC).  SMII transmit data is input on these pins, where: Ports 0~7 transmit data is sent synchronously to SYNC_0_7 and REFCLK_0_7. Ports 8~15 transmit data is sent synchronously to SYNC_8_15 and REFCLK_8_15.
P1TXD		108	
P2TXD		110	
P3TXD		116	
P4TXD		119	
P5TXD		121	
P6TXD		123	
P7TXD		125	
P8TXD		2	
P9TXD		4	
P10TXD		6	
P11TXD		8	
P12TXD		12	
P13TXD		20	
P14TXD		22	
P15TXD	24		
P0RXD	I	107	SMII Receive Data Input: SMII receive data is input on these pins. Where: Ports 0~7 receive data is received synchronously to SYNC_0_7 and REFCLK_0_7. Ports 8~15 receive data is received synchronously to SYNC_8_15 and REFCLK_8_15.
P1RXD		109	
P2RXD		111	
P3RXD		117	
P4RXD		120	
P5RXD		122	
P6RXD		124	
P7RXD		126	
P8RXD		3	
P9RXD		5	
P10RXD		7	
P11RXD		9	
P12RXD		13	
P13RXD		21	
P14RXD		23	
P15RXD	27		
SYNC_0_7 SYNC_8_15	O	118	SMII Synchronization Output. SMII transmit/receive data 10-bit word frame synchronization. Where: SYNC_0_7 synchronizes data for ports 0~7. SYNC_8_15 synchronizes data for ports 8~15.
		11	

Pin Name	Type	Pin No.	Description
REFCLK_0_7	O	127	SMII Reference Clock Output.
REFCLK_8_15		28	The SMII reference clock output is a 125MHz +- 50ppm clock used to synchronize the SMII data. Ports 0~7 data is sent or received synchronously to SYNC_0_3. Ports 8~15 data is sent or received synchronously to SYNC_8_15.

## 7.2. Serial Management Interface (SMI)

**Table 4. Serial Management Interface (SMI)**

Pin Name	Type	Pin No	Description
MDC	O (PU)	104	Serial Management Data Clock (MDC). MDC typically operates at 730kHz. MDC is in tri-state when RST# is active low.
MDIO	IO (PU)	105	Serial Management Data Input/Output. MDIO is in tri-state when RST# is active low.

## 7.3. Serial EEPROM Interface

**Table 5. Serial EEPROM Interface**

Pin Name	Type	Pin No	Description
SCK	IO (PU)	101	Serial EEPROM Interface Clock Output/ Serial CPU Access Clock Input. SCLK acts as an output pin after hardware reset for EEPROM read access. When the configuration download from EEPROM is finished, or if the EEPROM does not exist, then the SCLK will act as an input pin driven by an external CPU to access the RTL8316C internal registers. SCLK Frequency: Output: Operates at 100kHz Input: Max limit: 10MHz
SDA	IO (PU)	102	Serial EEPROM Data Input/Output/Serial CPU Access Data Input/Output. After power on, this pin is EEPROM serial data IO. When the configuration download from EEPROM is finished, or if the EEPROM does not exist, then this pin acts as a serial CPU data IO.

## 7.4. System Pins

**Table 6. System Pins**

Pin Name	Type	Pin No	Description
RESET#	I (PU)	103	System Reset. Active low to reset the system to a known state. After power-on reset (low to high), the configuration modes from Mode Control Pins (Pins (see the following section)) are strapped and determined.
XI/OSCI	I	56	Crystal Input/Oscillator Input. This is a 25Mhz +-50 ppm crystal input or oscillator input. When crystal is used, a capacitor connected from this pin to ground is recommended.
XO	O	57	Crystal Output. When crystal is used, a capacitor connected from this pin to ground is recommended. When an oscillator is used, keep this pin floating.

## 7.5. Mode Control Pins

The Mode Control pin values are strapped on power on reset. The strapped values may be updated via EEPROM configuration, if it exists. They can also be modified by internal register access from the CPU interface.

**Table 7. Mode Control Pins**

Pin Name	Type	Pin No.	Description
MaxPktLen (SCAN_LED5)	IO (PD)	87	Max. Valid Packet Length Control. 0: 1536 bytes (Default) 1: 1552 bytes
MaxPauseCnt (SCAN_LEDB1)	IO (PD)	79	Max Pause frame Count for Congestion Control. 0: 128 (Default) 1: Continuous
EnCOLBKmode (P4TXD)	IO (PD)	119	Enable Carrier-Based Back Pressure Mode. Half duplex back pressure flow control algorithm selection. 0: Carrier-based back pressure mode (Default) 1: Collision-based back pressure mode
EnCtrlFilter/ (SCAN_LED4)	IO (PD)	88	Enable 802.1D Specified Reserved Control Frame Filtering. When network control frames are received with the destination MAC address as the group MAC address: (01-80-C2-00-00-04 ~ 01-80-C2-00-00-0F), the switch will drop the frames if the EnCtrlFilter=1. If EnCtrlFilter=0 the frames will be flooded. 0: Disable Filtering (Default) 1: Enable Filtering
EnHomeVLAN (P7TXD)	IO (PD)	125	Enable Home VLAN Configuration. When enabled, the switch will be configured in Home VLAN mode. 0: Disable Home VLAN Function (Default) 1: Enable (set VLAN as 16 VLANs without overlapping port).



Pin Name	Type	Pin No.	Description
EnFDFC (P6TXD)	IO (PU)	123	Global Disable Full Duplex 802.3x Pause Flow Control Ability. Globally disables the 802.3x Pause ability flow control of all ports. 1: Enable 802.3x Pause flow control ability (Default) 0: Disable 802.3x Pause flow control ability
EnBKP (P3TXD)	IO (PU)	116	Global Disable Half Duplex Back Pressure Flow Control Ability. Globally disables the back pressure flow control ability of all ports. 1: Enable back pressure flow control ability (Default) 0: Disable back pressure flow control ability
EnBKP48One (SCAN_LED3)	IO (PU)	89	Enable Back Pressure 48 Pass One Algorithm. When the 48 Pass One algorithm is enabled, the switch will pass one incoming packet for every 48 collisions. 0: Disable 48 Pass One algorithm 1: Enable 48 Pass One algorithm (Default)
DisBCSFC (P11TXD)	IO (PD)	8	Disable Broadcast Packet Strict Flood Control. Set to disable broadcast packet (DA: 'FF-FF-FF-FF-FF-FF') strict flood mode and configure to loose flood mode. Strict flood mode will drop all broadcast packets if any one destination port is congested. Loose flood mode allows broadcast packets to be flooded to all non-congested ports. 0: Enable Broadcast Packet Strict Flood (Strict flood mode) (Default) 1: Disable Broadcast Packet Strict Flood (Loose flood mode)
EnBRDCTRL (SYNC_8_15)	IO (PD)	11	Broadcast Storm Filtering Control. Disables broadcast storm filtering control. 0: Disable Broadcast storm filtering control (Default) 1: Enable Broadcast storm filtering control
LED mode[1:0] P9TXD P8TXD	IO (PD, PU)	4 2	00: Scan LED mode. 01: Serial LED mode (single color) (default) 10: Serial LED mode (bi-color) 11: Reserved

## 7.6. LED Pins

### 7.6.1. Scan LED Pins

**Table 8. Scan LED Pins**

Pin Name	Type	Pin No.	Description	
Port 0_7 Scan_LED Group	IO		Scan LED pins display for port0~port7 link status.	
SCAN_LEDA5		87	In Scan LED mode, this LED group displays each port's (1) Speed, (2) Link/Activity, (3) Collision/Duplex status without external TTL.	
SCAN_LEDA4		88		
SCAN_LEDA3		89		
SCAN_LEDA2		92		
SCAN_LEDA1		93		
SCAN_LEDA0		94		
SCAN_STSA3		95		
SCAN_STSA2		98		
SCAN_STSA1		99		
SCAN_STSA0		100		
Port 8_15 Scan_LED Group		IO		
SCAN_LEDB5	75			In Scan LED mode, this LED group displays each port's (1) Speed, (2) Link/Activity, (3) Collision/Duplex status without external TTL.
SCAN_LEDB4	76			
SCAN_LEDB3	77			
SCAN_LEDB2	78			
SCAN_LEDB1	79			
SCAN_LEDB0	80			
SCAN_STSB3	81			
SCAN_STSB2	82			
SCAN_STSB1	85			
SCAN_STSB0	86			
Scan_LED Group	IO			
SCAN_LEDC5		61		
SCAN_LEDC4		62		
SCAN_LEDC3		63		
SCAN_LEDC2		64		
SCAN_LEDC1		65		
SCAN_LEDC0		66		

## 7.6.2. Serial LED Pins

**Table 9. Serial LED Pins**

Pin Name	Type	Pin No.	Description
SLED_CLK (SCAN_STSA0)	O	100	Serial LED Shift Clock. In Serial LED mode, when Serial LED mode is enabled, periodically active to enable SLED_DATA to shift into the external shift register.
SLED_DATA (SCAN_STSA1)	O	99	Serial LED Data Output. In Serial LED mode, when Serial LED mode is enabled, serial LED data is shifted out when SLED_CLK is active.
SLED_DMODE_CLK (SCAN_STSA2)	I	98	Serial LED Diagnostic Mode Item Select Control Pulse Input. This is an external signal pulse input signal for diagnostic item selection. The diagnostic LED display item will change whenever there is a signal pulse clock input on this pin. The diagnostic items list and its display sequence is as follows: (1) DisablePort/RxError (active low) On: Port disabled Blinking: Error Packet Received (includes dropped packets) (2) FlowControl/FCActive (active low) On: Flow control ability enabled Blinking: Congestion flow control active (3) TrunkPort/TKFault (active low) On: Trunk Port Blinking: Trunk link fault port (4) HighPriorityPort (active low) On: High priority port (5) LoopDetectPort (active low) On: Loop event detected. (6) BroadcastStormAlarmPort (active low) On: Broadcast Storm detected (7) Reserved (8) Reserved
LED_EnTRUNK#0 (SCAN_STSA3)	O	95	Trunk Port Enabled LED Output. 0 (On): Trunk Enabled 1 (Off): Trunk Disabled.
LED_EnTRUNK#1 (SCAN_LEDA0)		94	The LED blinks to indicate that there is a trunk member port link down. For Serial LED Mode: act as Trunk 0 (port 0~3) Enable LED.
LED_EnTRUNK#2 (SCAN_LEDA1)		93	For Serial LED Mode: act as Trunk 1 (port 4~7) Enable LED.
LED_EnTRUNK#3 (SCAN_LEDA2)		92	For Serial LED Mode: act as Trunk 2 (port 8~11) Enable LED. For Serial LED Mode: act as Trunk 3 (port 12~15) Enable LED.
LED_Loop_Det (SCAN_STSB1)	O	85	For Serial LED Mode: Act as Loop detect for global port. Loop Detect LED output. 0: Loop detected 1: Loop not detected

## 7.7. Power/Ground Pins

**Table 10. Power/Ground Pins**

Pin Name	Type	Pin No	Description
DVDD	P	10, 14, 25, 32, 43, 54, 60, 71, 83, 96, 112, 128	3.3V/2.5V for I/O Digital Power.
DGND	G	1, 26, 33, 44, 55, 70, 97, 113	GND for I/O.
RVDD	P	15, 19	3.3V/2.5V for Internal 3.3V/2.5V to 1.8V Regular Power Input.
VDD	P	16, 35, 50, 73, 90, 114	1.8V Input for Internal Test Used. Do not supply 1.8V if RVDD is used.
GND	G	18, 36, 74, 91, 115	GND for Core Power.
AVDD	P	59	3.3V/2.5V for PLL Power.
AVSS	G	58	GND for PLL.

*Note: When operating at 3.3V, use 3.3V and 1.8V only. When operating at 2.5V, use 2.5V and 1.8V only.*

## 7.8. Test Pins

**Table 11. Test Pins**

Pin Name	Type	Pin No.	Description
TESTMODE	IO (PD)	84	Test Pin. Normally not pulled up or down.
MS_Test[1]	IO (PU)	41	Must use 4.7K resistor to pull down to ground.
GAN_Test (SYNC_0_7)	IO	118	Must use 1K resistor to pull up to 3.3V.
NC Pins	-	29, 30, 31, 34, 37, 38, 39, 40, 42, 45, 46, 47, 48, 49, 51, 52, 53, 67, 68, 69	Keep NC Pins Floating.
OPCLK2 (P0TXD)	IO (PD)	106	Test Pin. Normally not pulled up or down.
OPCLK1 (P1TXD)	IO (PD)	108	Test Pin. Normally not pulled up or down.
OPCLK0 (P2TXD)	IO (PD)	110	Test Pin. Normally not pulled up or down.

## 8. Functional Description

### 8.1. *Reset*

#### 8.1.1. Hardware Reset

In a power-on reset, an internal power-on reset pulse (44ms) will be generated and the RTL8316C will start the reset initialization procedures. These are:

- Determine various default settings via the hardware strap pins at the end of the RST# signal
- Auto load the configuration from EEPROM if EEPROM is detected (approx. 10ms)
- Complete the embedded SSRAM BIST process (approx. 24 ms)
- Initialize the packet buffer descriptor allocation
- Initialize the internal registers and prepare them to be accessed by the serial CPU interface
- Start MDC/MDIO configuration and polling

*Note 1: To guarantee register access is valid and correct, the RTL8316C registers should not be accessed before the reset initialization process is finished.*

*Note 2: The connected PHY should have completed the reset process before the RTL8316C starts the MDC/MDIO configuration and polling process.*

#### 8.1.2. Software Reset

The software reset command resets the system control circuit and restarts auto-negotiation. It keeps the user configured settings. Hardware pin strapping, EEPROM auto load, and SSRAM BIST are NOT done when using the software reset command.

### 8.2. *MAC to PHY Interface*

The MAC to PHY interface supports SMII for all ports.

### 8.3. *Fast Ethernet Port (SMII Interface)*

Ports 0~15 are 10/100M Fast Ethernet ports supporting a Serial Media Independent Interface (SMII). The RTL8316C provides three SMII synchronous 125MHz clock outputs for three octal PHYs.

## **8.4. MAC Address Table Search and Learning**

The RTL8316C MAC address lookup table consists of an 8K-entry hash table and 64-entry Content Addressable Memory (CAM). The RTL8316C uses the last 13 bits of the MAC address to index the 8K-entry lookup table for address searching and learning. If the mapped location in the 8K entries is occupied, then the RTL8316C will compare the destination MAC address with the contents of the CAM for address searching, and store the source MAC address in the CAM for address learning. The 64-entry CAM helps avoid address hash collisions and improves switch performance.

## **8.5. MAC Table Aging Function**

In a dynamic network topology, address aging allows the contents of the address table to always be the most recent and correct. A learned source address entry will be cleared (aged out) if it is not updated by the address learning process within a set aging time period. The default aging timer of the MAC address lookup table is between 200~300 seconds.

## **8.6. Illegal Frame Filtering**

Illegal frames such as CRC error packets, runt packets (length < 64 bytes) and oversize packets (length > maximum length) will be discarded. The maximum packet length may be 1536 or 1552 bytes.

This function is controlled by register 0x0001 [1:0].

Hardware Strapping Pin: MaxPKLen (87).

## **8.7. IEEE 802.1D Reserved Group Addresses Filtering Control**

The RTL8316C supports the ability to drop 802.1D specified reserved group MAC addresses: 01-80-C2-00-00-04 to 01-80-C2-00-00-0F. The default setting disables dropping of these reserved group MAC address control frames. Frames with group MAC address 01-80-C2-00-00-01 (802.3x Pause), 01-80-c2-00-00-02 (802.3ad LACP) will always be filtered. MAC address 01-80-C2-00-00-03 is not filtered.

This function is controlled by register 0x0300 [2].

Hardware Strapping Pin: EnCtrlFFilter (88).

## **8.8. Backoff Algorithm**

The RTL8316C implements the truncated exponential backoff algorithm compliant with the IEEE 802.3 standard. The collision counter is restarted after 16 consecutive collisions.

## 8.9. *Inter-Packet Gap*

The Inter-Packet Gap is 9.6 $\mu$ s for 10Mbps Ethernet, 960ns for 100Mbps Fast Ethernet.

The RTL8316C supports Transmit Inter-Packet Gap compensation for the frequency shift tolerance of the on-board oscillator.

This function is controlled by register 0x0001 [2].

## 8.10. *Buffer Management*

An embedded 1.25Mbit SSRAM is built-in as a packet storage buffer. To efficiently utilize the packet buffer, the RTL8316C divides the SSRAM into 1280 x 128-byte page-based buffers that are linked by a descriptor link list. For an Ethernet packet, a minimum of one, and maximum of 12 pages can be used. The system supports non-blocking wire-speed switching via 16 10/100M ports.

## 8.11. *Flow Control*

The RTL8316C supports IEEE 802.3x full-duplex flow control, and half-duplex back pressure congestion control.

### 8.11.1. **IEEE 802.3x Pause Flow Control**

IEEE 802.3x flow control is auto-negotiated between the remote device and the RTL8316C by writing the flow control ability, via MDIO, to an external connected PHY.

If a good PAUSE frame is received from any PAUSE flow-control-enabled port with DA=0180C2000001, the corresponding port of the RTL8316C will stop its packet transmission until a PAUSE timer timeout, or another PAUSE frame with zero PAUSE time is received.

The maximum transmitted Pause frame count during a congestion event is controllable. (1) limited to a 128 count, (2) unlimited count. The limited count is used to avoid unexpectedly long pause time locks for some network topology traffic.

This function is controlled by register 0x0001 [3].

Hardware Strapping Pin: MaxPauseCnt (79).

### 8.11.2. Half Duplex Back Pressure Flow Control

The RTL8316C supports two back pressure flow control schemes to force incoming packet backoff when the switch destination port is congested. This back pressure mode is controlled by register 0x0001 [7] and Hardware Strapping Pin: EnCOLBKPMODE (119).

**Collision-based back pressure:** Uses a 4-byte jam pattern to force collisions with each incoming packet to force the link partner to back off transmissions according to CSMA/CD until the destination port congestion event is cleared. The RTL8316C uses a special half-duplex back pressure design; after 48 forced collisions it unconditionally receives and forwards one packet successfully. This prevents the connected repeater from being partitioned due to excessive collisions.

**Carrier-sense-based back pressure:** When a congested event is asserted, the RTL8316C continuously sends 4k jam packets with a minimum Inter-Packet Gap to prevent the link partner from transmitting more packets.

### 8.12. Broadcast Storm Filtering Control

The Broadcast Storm Filtering Control function enables each port to drop broadcast packets (Destination MAC ID is ‘ff ff ff ff ff ff’) after a *continuous received broadcast packets counter* count of 64. The counter is reset to 0 every 800ms or when receiving non-broadcast packets (Destination MAC ID is not ‘ff ff ff ff ff ff’).

This Broadcast Storm Filtering Control function is controlled by register 0x0607 [4].

Hardware Strapping Pin: EnBRDCTRL (11).

### 8.13. Head-Of-Line Blocking Prevention

The RTL8316C incorporates a simple mechanism to prevent Head-Of-Line blocking problems when flow control is disabled. When the flow control function is disabled, the RTL8316C first checks the destination address of an incoming packet. If the destination port is congested, then the RTL8316C discards this packet to avoid blocking following packets destined for a non-congested port.



## 8.14. Port Trunking and Fault Recovery Support

Port Trunking is the ability to aggregate several 10/100Mbps ports into a single logical link. There are 4 trunk groups supported by the RTL8316C. They are identified as:

- Trunk 0: (Port 0, 1, 2, 3)
- Trunk 1: (Port 4, 5, 6, 7)
- Trunk 2: (Port 8, 9, 10, 11)
- Trunk 3: (Port 12, 13, 14, 15)

They are individually enabled by Register 0x0307[4:1], EnTrunk[3:0] during hardware reset. Each trunk supports a trunking port status LED. The LED will be active low when the trunking function is enabled.

The RTL8316C trunking port always sends packets over the same link path in the trunk with a given source and destination MAC address to prevent frames from getting out of order, but the reverse path may follow a different link.

### 8.14.1. Load Balancing

The load balancing scheme between links in a trunk group is determined by an Index[2:0] value that is calculated by a DA and SA hash algorithm.

Mapping algorithm. Given a number between 8 values of Index[2:0]:

If link up port is 4. Index value {(7, 6), (5, 4), (3, 2), (1, 0)} maps to LinkUpPort[3:0]

If link up port is 3. Index value {(7, 6, 5), (4, 3, 2), (1, 0)} maps to LinkUpPort[2:0]

If link up port is 2. Index value {(7, 6, 5, 4), (3, 2, 1, 0)} maps to LinkUpPort[1:0]

If link up port is 1. Index value {(7, 6, 5, 4, 3, 2, 1, 0)} maps to LinkUpPort[0]

### 8.14.2. Trunk Fault Auto Recovery

If a physical port of a trunk group is link down, then the EnTrunkLED will blink to warn of a link-down fault event. The Fault flag will be reported on register 0x0102 (System Fault Indication Register).

The RTL8316C will auto-start the Auto Fault Recovery scheme to distribute the trunk load to the remaining link up ports.

## 8.15. IGMP Snooping Support

The RTL8316C supports ASIC-based IGMP (Internet Group Management Protocol) snooping. This can be enabled via register 0x0308[0]. No other external CPU handling is required. It supports the ability to parse the IGMP control protocol packets and IP multicast data packets and learn the multicast router port and group address member ports into the multicast address table.

The RTL8316C differentiates between IGMP control protocol packets according to the message type:

- Router protocol packets (IGMP query packets and multicast routing protocol packets) are broadcast to all ports
- Group member protocol packets (IGMP v1, Query and Report packets) are sent directly to multicast router ports

IP multicast data packets involve multicast group table lookup and forwarding operations. If the table lookup returns a hit, the data packet is forwarded to all member ports and router ports. If the multicast address is not stored in the address table (i.e. lookup miss), the packet is broadcast to all ports of the broadcast domain.

The multicast table is combined with a L2 MAC table with a maximum of 8k entries. For a given multicast entry, the valid port member bit will auto age out after about 5 minutes if the port does not receive a corresponding group address IGMP report packet.

## 8.16. VLAN Function

The RTL8316C supports a VLAN function to segregate the switch into 32 VLANs. Each VLAN is a broadcast domain and each VLAN may be flexibly configured from 0 to 16 port members. Both port-based and tag-based VLAN functions are supported. The PVID, Tagging Control, and Ingress/Egress rules are manually configured on the VLAN Table at registers 0x030B~0x037C. The VLAN table format is shown as follows:

**Table 12. VLAN Table Format**

VLAN Entry Index	VID (12-Bit)	Port Member Set (26-bit Bitmap)
0		
1		
2		
:		
31		

‘VID’ defines the 802.1Q VLAN ID. The value of ‘VID’ may NOT be ‘0x000’ or ‘0xffff’.

A VLAN is used to divide the broadcast domain to cut broadcast scope. The VLAN Frame Forwarding Rules are defined as follows:

- A received broadcast/multicast frame will be flood forwarded to VLAN member ports only (‘Port Member Set’ in the VLAN table) of the VLAN except the source port.
- A received unicast frame will be forwarded to its destination port only if the destination port is in the same VLAN as the source port. If the destination port belongs to a different VLAN, the frame will be discarded unless Leaky VLAN control is enabled.
- All VLAN groups share the same layer-2 learned MAC address table (Shared Learning).

### 8.16.1. Port-Based VLAN

By setting the 0x030B register to disable the En8021Qaware control bit, port-based VLAN is enabled and 802.1Q VLAN tagging is ignored. All other VLAN table configurations are the same as tag-based VLAN functions. The VLAN classification of an incoming packet on a port-based VLAN is defined by the port PVID. The RTL8316C uses the Port VLAN Identifier (PVID) to search the VLAN table for the VLAN members.

### 8.16.2. IEEE 802.1Q Tag-Based VLAN

By setting the 0x030B register to enable the En8021Qaware control bit, 802.1Q tag-based VLAN is enabled.

VLAN classification is the first step before VLAN table lookup. The method of assigning a unique VID value to a received packet is as follows:

1. For a VLAN-tagged packet.

If the tagged 12-bit VID!=0, then the tagged VID value is used.

If the tagged VID=0 (Null VID, priority tag), then the port’s PVID value is used.

2. For a non-VLAN-tagged packet, the port’s 12-bit PVID value is used.

*Note: The ‘insert PVID’ function for non-VLAN-tagged packets is controlled by registers 0x037D).*

After a unique 12-bit VID is assigned, the RTL8316C checks the VLAN table ingress/egress rule, and then forwards the packet to valid destination ports.

### 8.16.3. Ingress/Egress Filtering Control Parameters

Two VLAN filtering rule control parameters are provided on register 0x030B:

- Acceptable frame type control: Admits all frames or admits only VLAN-tagged frames
- Ingress filtering control: Enables filtering of frames received from a port that is not in this port’s VLAN group

#### 8.16.4. Leaky VLAN

The Leaky VLAN feature enables specific frames to be forwarded between different VLANs.

For example, if the VLAN table entry is:

VLAN 1: Port members = {Port 1, 2, 3}

VLAN 2: Port members = {Port 4, 5, 6}

Normally, broadcast, multicast, and unicast packets are not allowed to be switched between these two VLANs. Port 1 broadcast packets will only flood to Port 2 and 3. A Port 1 unicast packet is not allowed to be forwarded to a member of VLAN 2.

If the Leaky VLAN function is enabled, three types of packets may be forwarded to destination ports outside the current VLAN.

1. Unicast Packet: May be forwarded to a destination port (L2 table lookup hit) on a different VLAN
2. ARP Broadcast Packet: May be broadcast to all ports on a switch
3. IP Multicast Packet: May be flooded to all the multicast address group member set, ignoring the VLAN member set domain limitation

These types of leaky control are used when:

- A switch is divided into multiple VLANs and host to host communication is required between the different VLANs without using a router
- You want to improve router performance

#### 8.16.5. Insert/Remove VLAN Priority Tag

The RTL8316C supports Output Priority tagging control via register set 0x0319~0x031B. There are four types of VLAN tagging:

1. Remove the VLAN tag from all tagged packets
2. Insert a priority tag into untagged high-priority packets (Set priority field: 7, VID field: 0 for high priority packets)
3. Insert a priority tag into all untagged packets (Set priority field: 7, VID field: 0 for high priority packet. Set priority field: 0, VID field: 0 for low priority packets)
4. Do not touch (No modification made to the packet)

*Note: This function may be enabled whether the VLAN function is enabled or not.*

## 8.17. QoS Function

The RTL8316C can recognize QoS priority information in an incoming packet and send the packet to different priority queues for different service priority. The RTL8316C identifies the packet's priority based on three types of QoS priority information:

- Port-based priority
- IEEE 802.1p/Q VLAN tag
- TCP/IP TOS/DiffServ (DS) priority field

These three types of QoS can be configured via hardware pins, EEPROM, or Registers 0x0400 ~ 0x0401.

The RTL8316C supports two priority level queues. The queue service rate is based on the Weighted Round Robin algorithm. The packet-based service weight ratio of high-priority and low-priority queuing can be set to 4:1, 8:1, 16:1 or 'Always high priority first'.

*Note: If En8021pPri is enabled, do not disable flow control and broadcast packet strict flood control.*

### 8.17.1. Port-Based Priority

When port-based priority is applied, any packet received from a high priority port will be treated as a high priority packet.

### 8.17.2. IEEE 802.1p/Q-Based Priority

When 802.1p tag priority is applied, the RTL8316C recognizes 802.1Q VLAN tagged packets and extracts the 3-bit User Priority information from the VLAN tag. The RTL8316C sets the User Priority threshold to 3. VLAN tagged packets with User Priority values 4~7 are treated as high priority packets, and other User Priority values (0~3) as low priority packets (follows the IEEE 802.1p standard).

### 8.17.3. Differentiated Services Based Priority

When TCP/IP's TOS/DiffServ (DS) based priority is applied, the RTL8316C recognizes TCP/IP Differentiated Services Codepoint (DSCP) priority information from the DS-field defined in RFC2474. The DS field byte for IPv4 is the Type-of-Service (TOS) octet. Recommended DiffServ Codepoints are defined in RFC2597 for classifying traffic into different service classes. The RTL8316C extracts the codepoint value of the DS field from IPv4 packets and identifies the priority of the incoming IP packet following the definitions listed below:

High Priority. DS-field = 101110 (EF, Expected Forwarding)

001010; 010010; 011010; 100010 (AF, Assured Forwarding)

11x000 (Network Control)

Low Priority. DS-field = Other values

VLAN tagged packet formats are shown below:

6 bytes	6 bytes	2 bytes	3 bits	1 bit	12 bits		4 bytes
DA	SA	81-00	User Priority (0~3: Low-pri; 4~7: High-pri)	CFI	VLAN Identifier	Data	CRC

**Figure 4. 802.1Q VLAN Tag Frame Format**

6 bytes	6 bytes	4 bytes	2 bytes	4 bits	4 bits	6 bits	2 bits		4 bytes
DA	SA	802.1Q Tag (Optional)	08-00	Version IPv4: 0100	IHL	TOS[0:5]: DS-field	----	Data	CRC

**Figure 5. IPv4 Frame Format**

#### 8.17.4. Flow Control Auto Turn Off

The RTL8316C can automatically turn off IEEE 802.3x flow control and back pressure flow control for 1~2 seconds whenever the port receives a high priority packet. Flow control is re-enabled when no priority packets are received for 1~2 seconds. This auto-turn off function is enabled via Register 0x0400[2].

### 8.18. *Ingress and Egress Bandwidth Control*

The RTL8316C supports bandwidth control on all ports. Each port's bandwidth is configurable on both ingress and egress traffic independently. Port bandwidth may be configured to 128kbps, 256kbps, 512kbps, 1Mbps, 2Mbps, 4Mbps, or 8Mbps.

When the ingress or egress traffic bandwidth exceeds the configured threshold, flow control is triggered to limit the throughput. The control description is shown in register 0x020A ~0x0215.

## 8.19. Simple MIB Counter Support

Three 32-bit MIB counters (Counter 1, Counter 2, and Counter 3) are implemented on each port for basic traffic management and diagnostic purposes.

The MIB object of each counter is configurable. The MIB object selection on each counter is shown in Table 13. A detailed description is given in 10.8 MIB Counter Register, page 50.

**Table 13. MIB Object Selection**

MIB Object	Counter 1	Counter 2	Counter 3
RX Packet Count	V	-	-
RX Byte Count	V	-	-
TX Packet Count	-	V	-
TX Byte Count	-	V	-
Drop Packet Count	-	-	V
Drop Byte Count	-	-	V
CRC Error Packet Count	V	V	V
Collision Count	V	V	V

## 8.20. Network Loop Connection Fault Detection

The RTL8316C periodically transmits a Realtek-EtherType (=0x8899) protocol frame to detect network loop faults.

- Normal transmission time interval is five minutes
- If a port detects a loop, the loop event flag will be set (register 0x0101) and the transmission time interval will change to one second to speed up the new topology change detection
- The loop event flag will be cleared and the transmission time interval will return to five minutes if the port does not receive a self-loop detect packet for 3 seconds

### Loop Detect Packet Format

The Loop Detect Packet Format is shown below:

**Table 14. Loop Detect Packet Format**

0	8	16	24 ~ 32
DA (6) [=0xffffffff]			
DA		SA (6)[=Switch MAC]	
SA			
RealtekEtherType (2) [=0x8899]		Protocol (1) [=03]	Pad 0000
Pad 00000000			
⋮			
⋮			
CRC (4)			

## 8.21. Realtek Echo Protocol

The Realtek Echo Protocol (REP) supports the Layer 2 Echo test. It is easy for a host to do network connection diagnostics through a simple test packet, with or without other hosts on the network. No IP assignment is required.

When the RTL8316C receives a REP packet, it replies by sending the original REP frame to the source MAC address with the DA and SA exchanged.

### Realtek Echo Protocol Frame

The Realtek Echo Protocol frame format is shown below:

0	8	16	24 ~ 32
DA (6) [=0xffffffff]			
DA		SA (6)[=Valid Address]	
SA			
RealtekEtherType (2) [=0x8899]		Protocol (1) [=02]	Pad 0000
Pad 00000000			
:			
:			
CRC (4)			

**Figure 6. Realtek Echo Protocol Frame**

## 8.22. Disable Port

A port can be disabled via the Port Disable Control Register (register 0x0608~0x0609). When a port is disabled, the port will cease all packet transmission and reception. The physical link status is not changed.



## 8.23. Port Properties Configuration

The RTL8316C supports a flexible method to configure port properties via the PHY MII register. Configurable properties include Media Speed (10M/100M), Duplex Mode, and 802.3x PAUSE flow control. The properties of each can be configured by auto-negotiation or forced mode (auto negotiation disabled).

The port link state will be reported in the port Link Status register. The configuration description is shown in registers 0x060A~0x0624.

The following shows how to configure the Pause and Asymmetric Pause ability on port property registers (0x060A~0x0615) to get an expected negotiation result.

**Table 15. Configuring Pause and Asymmetric Pause**

PAUSE	Asymmetric PAUSE	Expected PAUSE Result
0	0	Disable
0	1	Asymmetric to Link Partner
1	0	Symmetric (Default)
1	1	Asymmetric to Link Local or Symmetric

When a port is configured to ‘Forced Mode’ (auto negotiation disabled), the following table shows how to configure flow control ability (TX pause/RX pause) on port property registers (0x060A~0x0615) to get an expected negotiation result.

**Table 16. TX/RX Pause Ability in Forced Mode**

(0x060A~0x0615) bit[6] Asymmetric PAUSE	(0x060A~0x0615) bit[5] Asymmetric PAUSE	RTL8316C Flow Control Ability
0	0	RX Pause Ability Only
0	1	No Flow Control Ability
1	0	TX Pause Ability Only
1	1	Both TX/RX Pause Ability

## 8.24. Serial CPU Interface

The RTL8316C supports a serial CPU interface (Slave mode) that shares the same hardware pin (SCK, SDA) as the EEPROM interface (Master mode). The EEPROM and Serial interface can coexist by assigning a different device ID. Define EEPROM device ID=1010-000, RTL8316C device ID=1010-100. The interface is compatible with the Atmel EEPROM AT24C04.

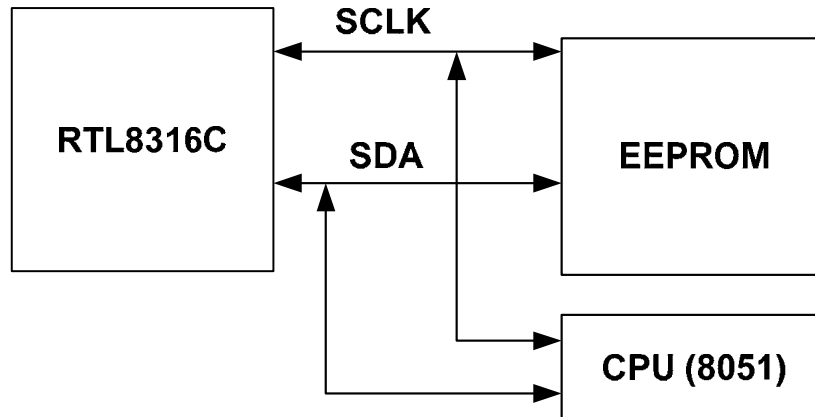


Figure 7. Serial CPU Interface

The serial CPU interface is enabled after the EEPROM download has finished. When operating in serial CPU mode the SCK is an input pin. The SDA is an IO pin with internal pull high.

### 8.24.1. Serial-CPU Access Format

In Serial CPU mode, 16-bit and 32-bit data access are both supported by the RTL8316C. The Serial Read Write access format is as follows.

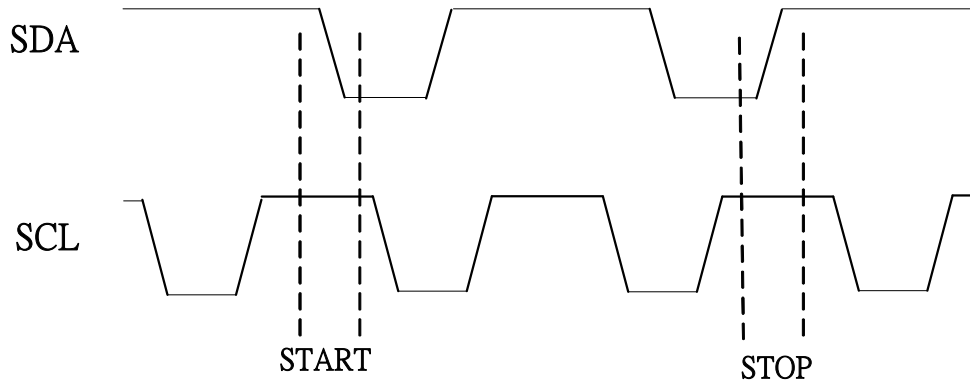
- 16-bit Address (MSB first)
- 16/32-bit data Burst Read (Low byte (Byte0) first; MSB first)
- 16/32-bit data Burst Write (Low byte (Byte0) first; MSB first)

*Note: Each burst is one byte.*

### Start and Stop Definition (START; STOP)

A high-to-low transition of SDA with SCLK high is a START condition and it must precede any other command.

A low-to-high transition of the SDA line while the clock (SCLK) is HIGH determines a STOP condition. All operations must end with a STOP. For the start and end of a write/read command, SCK needs one extra clock before/after the start/stop signals.

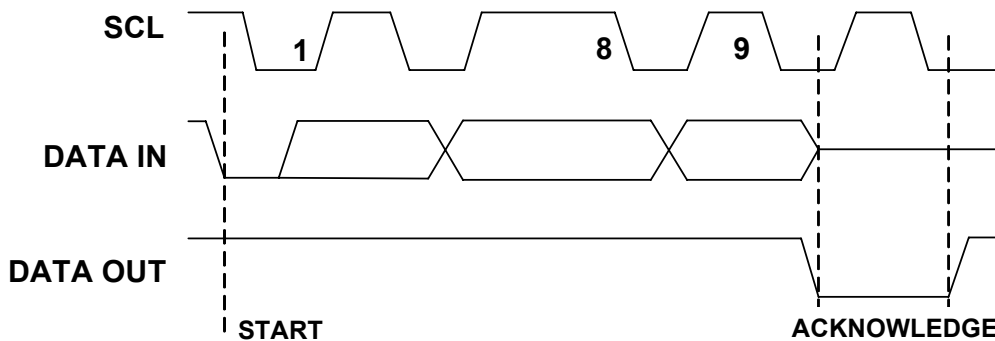


**Figure 8. Start and Stop Definition**

### Output Acknowledge (ACK)

When addressed, each receiving device is obliged to generate an acknowledgment after reception of each byte.

The master device must generate an extra clock pulse that is associated with this acknowledgement bit.



**Figure 9. Output Acknowledge (ACK)**

### Data Valid

The state of the data line represents valid data when, after a START condition, the data line is stable for the duration of the HIGH period of the clock signal.

The data on the line must be changed during the LOW period of the clock signal. There is one clock pulse per bit of data.

**Serial CPU 16-Bit Read/Write Format**
**Table 17. Serial CPU 16-Bit Read/Write Format**

Bit Width	1	4	3	1	1	8	1	8	1	8	1	8	1	1
Operation	Start Bit	Control code	Chip Select	RW	Ack	Reg. Addr. [7:0] (MSB first)	Ack	Reg. Addr. [15:8] (MSB first)	Ack	Reg. Data. [7:0] (MSB first)	Ack	Reg. Data. [15:8] (MSB first)	Ack	Stop Bit
16-bit Read	Start	1010	100	1	0 (*A)	Write Data	0 (*A)	Write Data	0 (*A)	Read Data	0 (*B)	Read Data	1 (*B)	Stop
16-bit Write	Start	1010	100	0	0 (*A)	Write Data	0 (*A)	Write Data	0 (*A)	Write Data	0 (*A)	Write Data	1 (*A)	Stop

Note: \*A = ACK by RTL8316C. \*B = ACK by CPU.

**Serial CPU 32-Bit Read Format**
**Table 18. Serial CPU 32-Bit Read Format**

Bit Width	1	4	3	1	1	8	1	8	1	8	1	8	1	8	1	8	1	1
Operation	Start Bit	Control code	Chip Select	RW	Ack	Reg. Addr. [7:0] (MSB first)	Ack	Reg. Addr. [15:8] (MSB first)	Ack	Reg. Data. [7:0] (MSB first)	Ack	Reg. Data. [15:8] (MSB first)	Ack	Reg. Data. [23:16] (MSB first)	Ack	Reg. Data. [31:24] (MSB first)	Ack	Stop Bit
32-bit Read	Start	1010	100	1	0 (*A)	Write Data	0 (*A)	Write Data	0 (*A)	Read Data	0 (*B)	Read Data	0 (*B)	Read Data	0 (*B)	Read Data	1 (*B)	Stop

Note: \*A = ACK by RTL8316C. \*B = ACK by CPU.

## 8.25. PHY Serial Management Interface

The RTL8316C supports PHY management through the serial MDIO and MDC signal (SMI) to start the auto-negotiation process. After a power-on reset, the RTL8316C writes its abilities to the advertisement registers, 0 and 4, of the connected PHY and commands the PHY to restart the auto negotiation process. The PHY device address setting is defined as:

Address 16~31 for Fast Ethernet ports 0~15

After restarting auto-negotiation, the RTL8316C will continuously read the link status and abilities of local and link partners to determine the link state.

Port properties (speed, duplex, 802.3x flow control) can be configured via auto-negotiation or forced mode. The configuration parameters are held in register 0x060A ~ 0x0615. The final link status is reported in register 0x0619~0x0624.

### 8.25.1. SMI (MDC, MDIO) Interface

#### SMI (MDC, MDIO) Management Packet Format

**Table 19. SMI (MDC, MDIO) Management Packet Format**

	Management Frame Fields							IDLE
	PRE	ST	OP	PHYAD	REGAD	TA	DATA	
Read	1...1	01	10	AAAAA	RRRRR	Z0	DDDDDDDDDDDDDDDDDD	Z
Write	1...1	01	01	AAAAA	RRRRR	10	DDDDDDDDDDDDDDDDDD	Z

### 8.25.2. PHY Register Indirect Access

The RTL8316C supports the ability to randomly access PHY registers through a set of control registers at 0x0500~0x0502. Users need to define the PHY address ID, PHY Register ID, Data content of the write command, and operating command type (Read or Write) on the above registers. Then the RTL8316C will auto process the PHY Read/Write access through the MDC/MDIO interface.

#### Read PHY Register Procedure

Configure PHY Access Control Register (0x0500)

Read the result on PHY Access Read Data Register (0x0502)

#### Write PHY Register Procedure

Write the PHY Access Write Data Register (0x0501)

Configure the PHY Access Control Register (0x0500)

#### PHY Address ID Definition

The PHY address ID corresponds to the port location. The PHY address ID of Ports 0~15 are 0x10, 0x11, 0x12 ..., 0x1F.

## 8.26. LED Interfaces

The RTL8316C provides a flexible per-port LED display to show the per-port link status and diagnostic information. Both a parallel and serial interface are provided to drive the LEDs.

During power on reset, the parallel LED signals are driven low and the serial interface shifts to a low value for about two seconds to turn on all the LEDs for testing purposes.

## 8.27. Parallel LED Interface

The parallel interface only provides a system status LED.

LED signals include: LED\_loopDet, LED\_EnTrunk[3:0].

## 8.28. Serial LED Interface

The serial interface, SLED\_CLK, and SLED\_DATA provide clock and data to enable the external shift registers 74164 to capture the per-port link status and diagnostic information.

Another pin, LED\_DMODE\_CLK, provides the diagnostic items selection control. Each pulse signal input from this pin changes the diagnostic item to be displayed on the diagnostic LED.

Each port provides three port-state LEDs (StateLED) and one diagnostic LED (DiagLED). The LED display type can be flexibly configured and can be enabled or disabled to achieve the optimal BOM cost.

The LED display configuration is controlled by register 0x0005h ‘LED Display Configuration Register’, and can also be configured via EEPROM.

The StateLED display is defined by StatLED\_mode[2:0] on register 0x0005. The available display types are shown in the following table.

**Table 20. Serial LED Interface**

StatLEDn_mode[2:0]	000	001	010	011	100	101	110	111
StateLEDn Display Type	Link /Act	100Spd	Duplex /Col	Link/Act /100Spd	Duplex	Act	Link	Col

The display items of the diagnostic LED (DiagLED) are internally defined and are as follows:

**Table 21. Diagnostic LED Display**

Item	Description
(DiagItem_0) DisablePort/RxError	ON: Disabled port Blinking: RX CRC error
(DiagItem_1) FlowControl/FCActive	ON: Flow control enabled Blinking: Flow control active
(DiagItem_2) TrunkPort/TKFault	ON: Trunking enabled port Blinking: Trunk fault warning
(DiagItem_3) HighPriorityPort	ON: High priority port
(DiagItem_4) LoopDetectPort	ON: Network loop connection fault detect
(DiagItem_5) BroadcastStormAlarmPort	ON: Broadcast Storm Alarm port
(DiagItem_6) NULL	Reserved
(DiagItem_7) NULL	Reserved

The DiagLED display item is changed by a trigger signal input from hardware pin ‘LED\_DMODE\_CK’. The change sequence order of the DiagLED is:

DiagItem\_0 → DiagItem\_1 → DiagItem\_2 → ..... → DiagItem\_7 → Loop to DiagItem\_0

### 8.28.1. Serial LED Display Panel Example (4 LEDs, Register 0x0005)

**Enable Serial LED Display Mode:**

→ Set EnSerialMode: 1

**Define Per-port 4 LED Display Mode:**

→ Configuration. set EnLED[3:0]: 1111

**Define the statLED display type as: StatLED0=Link/Act, StatLED1=10/100M, StatLED2=Duplex/Collision:**

→ Configuration. set StatLED0\_mode[2:0]=000, StatLED1\_mode[2:0]=001, StatLED2\_mode[2:0]=010

Follow the same method to configure the per-port 1 LED, per-port 2 LED, and per-port 3 LED display mode, with or without enabling the diagnostic LED.

The LED panel is shown in Figure 10.

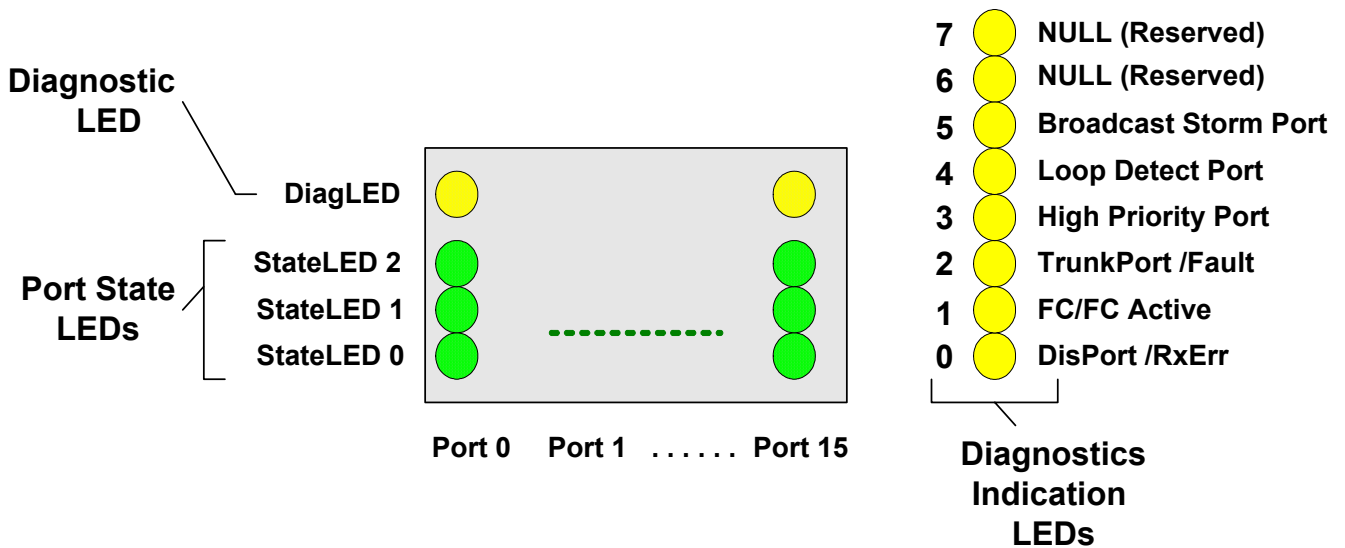


Figure 10. Serial LED Display

### 8.28.2. Serial LED Shift Out Sequence Order

The Serial LED output sequence is defined as follows: (first bit → ... → last bit).

Each port has four LEDs. There are eight diagnostic LEDs:

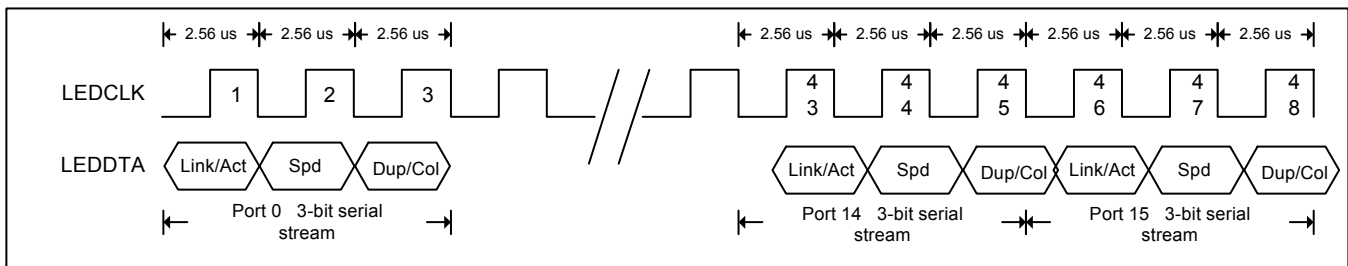
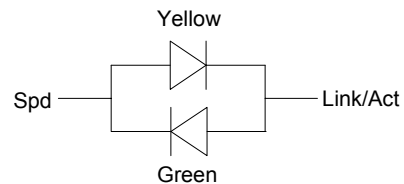
```

→ [P0 StateLED0] → [P0 StateLED1] → [P0 StateLED2] → [P0 DiagLED0]
→ [P1 StateLED0] → [P1 StateLED1] → [P1 StateLED2] → [P1 DiagLED0]
→ ----- → ----- → ----- → -----
→ [P15 StateLED0] → [P15 StateLED1] → [P15 StateLED2] → [P15 DiagLED0]
→ [Reserved_(DiagS0)] → [Reserved_(DiagS1)] → [Reserved_(DiagS2)] → [Reserved_(DiagS3)]
→ [Reserved_(DiagS4)] → [Reserved_(DiagS5)] → [Reserved_(DiagS6)] → [Reserved_(DiagS7)]
    
```

### 8.28.3. Serial LED Bi-Color LED Mode

For RTL8316C 3-bit Bi-color LED mode, Link/Act and Spd are used for one Bi-color LED package, which is a single LED package with two LEDs connected in parallel with opposite polarities.

Spd	Link/Act	Indication	Bi-Color State
0	0	No Link	Off
0	1	100Mb/s Link Up	Green
1	0	10Mb/s Link Up	Yellow



**Figure 11. 3-Bit Serial Stream Mode**



## 8.29. SCAN LED Interface

The RTL8316C supports Scan LED display mode. The forms of LED status streams, as shown below, are controlled by HW pin LEDMODE[1:0] = 2b'00, and are latched upon reset.

**Table 22. Scan LED Status**

LED Status	Description
Spd	Speed Indicator. High for 100Mbps and low for 10Mbps
Link/Act	Link, Activity Indicator. High for link established. Blinks when the corresponding port is transmitting or receiving
Col/Fulldup	Full Duplex, Collision Indicator. High for full duplex, and low for half duplex mode. Blinks when there are collisions on the corresponding port

The RTL8316C provides three Scan LED groups that display each port's status:

### Group A

(Scan\_LED\_A[5:0], Scan\_STSA[3:0]) displays status for port0~port7

### Group B

(Scan\_LED\_B[5:0], Scan\_STSB[3:0]) displays status for port8~port15

### Group C

(Scan\_LED\_C[5:0], displays status for applications

Scan\_LED\_A[5:0], Scan\_LED\_B[5:0] and Scan\_LED\_C[5:0] operate with the same timing phase. The Scan LED timing diagram is shown in Figure 12, on page 38.

### 8.29.1. Scan LED Timing Diagram

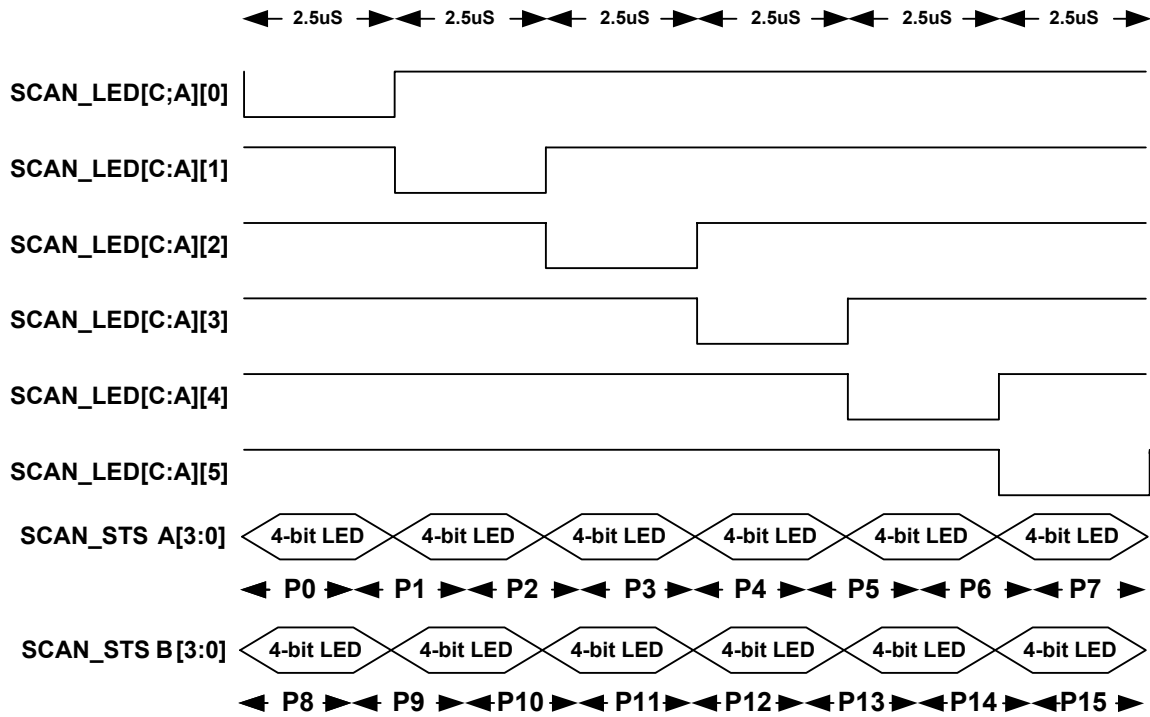
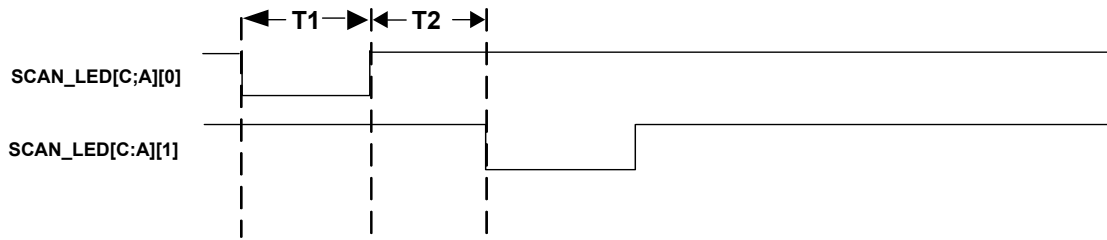


Figure 12. Scan LED Timing Diagram

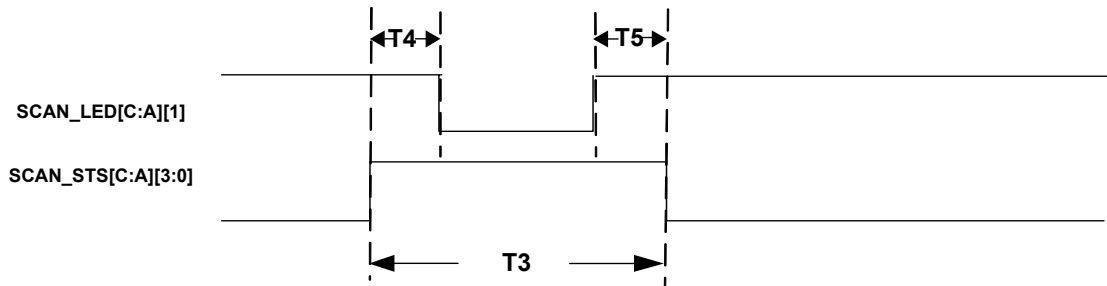
### 8.29.2. SCAN LED Timing Details

Table 23. Scan LED Timing Information

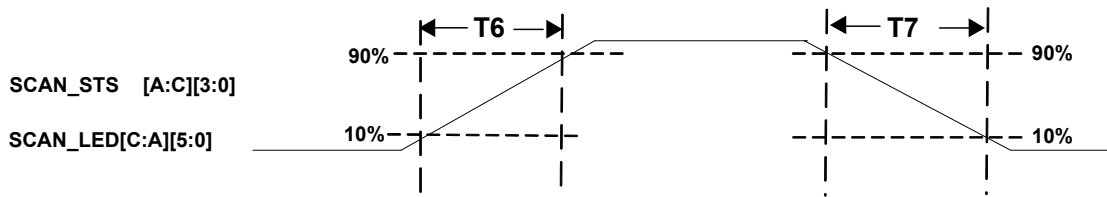
Symbol	Description	Min	Typ	Max	Units
T1	Low Duration of SCAN_LED Signal.	-	700	-	$\mu$ s
T2	Gap between Two Continuing SCAN_LED Signal	-	700	-	ns
T3	SCAN_STS Pin Active High Signal Duration	-	1.4	-	ms
T4	SCAN_STS Active High to SCAN_LED Active-Low	-	960	-	$\mu$ s
T5	SCAN_LED Active High to SCAN_STS Active-Low	-	640	-	ns
T6	Rising Time of All SCAN Signal	-	2.7	-	ns
T7	Falling Time of All SCAN Signal	-	2.7	-	ns



**Figure 13. Scan LED Timing Information (1)**



**Figure 14. Scan LED Timing Information (2)**



**Figure 15. Scan LED Timing Information (3)**

### 8.29.3. External Circuit for Scan LED

#### RTL8316C

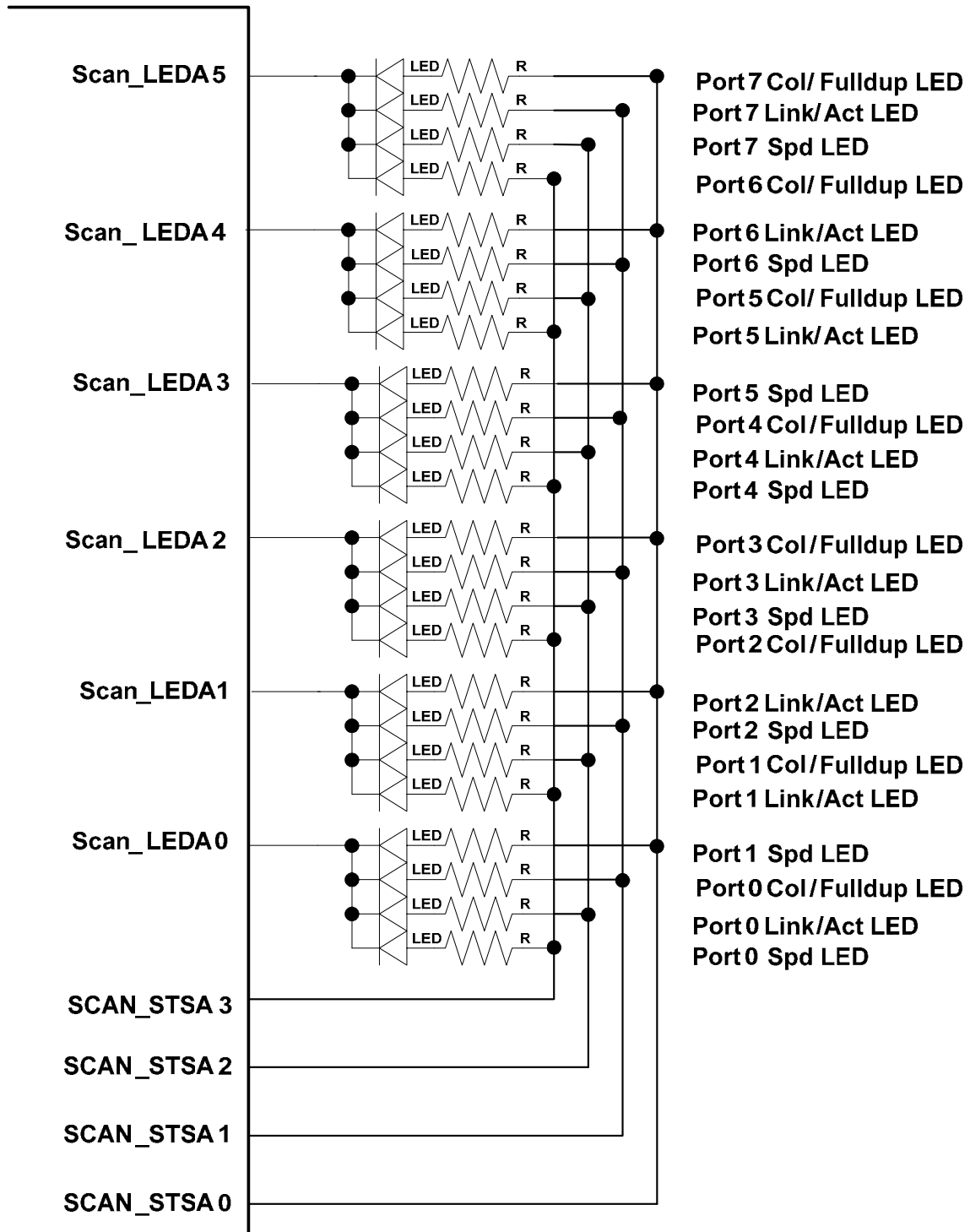


Figure 16. External Circuit for Scan LED

### 8.30. Port Mirroring

Port mirroring is used to forward traffic to a selected port based on one or more of the following:

- All traffic received from one or multi selected source ports (source mirroring)
- All traffic transmitted to one selected destination port (destination mirroring)
- The total transmission speed of all the source ports is equal to the destination port speed (e.g. If destination port 0's speed is 100Mhz, and port0 is mirroring port 1 and port 2, the speed of port1 and port2 will be limited by port0).

**Table 24. Port Mirror Control Register for P15-P0**

Register	Bits	Name	Description	RW	Default
0x0219	15:0	EnPortMirror(0)[15:0]	Enables the Port-Based Mirror Function. Bit n corresponds to port n. Write '1' to enable a port's mirror function	RW	0

**Table 25. RX Mirror Port Register for P15-P0**

Register	Bits	Name	Description	RW	Default
0x021B	15:0	Mirror_RX(0)[15:0]	Bit N Corresponds to Port N. Write '1' to duplicate port n RX data to mirrored port.	RW	0

**Table 26. TX Mirror Port Register for P15-P0**

Register	Bits	Name	Description	RW	Default
0x021D	15:0	Mirror_TX(0)[15:0]	Bit N Corresponds to Port N. Write '1' to duplicate port n TX data to mirrored port.	RW	0

## 9. Serial EEPROM Configuration (24C04)

The EEPROM configuration bits are directly mapped to some of the internal registers. For example, EEPROM addresses 0x04h and 0x05h directly map to internal register 0x0005 ‘LED Display Configuration’.

The mapping rule is: EEPROM 0x00h: REG. 0x0002[7:0], EEPROM 0x01h: REG. 0x0002[15:8].

When QoS is enabled, the packet buffer threshold registers improve throughput and we suggest that the packet buffer threshold use the values shown in Table 27.

### 9.1. EEPROM Configuration vs. Internal Register Mapping

**Table 27. EEPROM Configuration vs. Internal Register Mapping**

EEPROM Physical Address (8-Bit Data Entry) (24C04)	Description	Corresponding Internal Register Address Mapping	Internal Default
01~00	Reserved	0x0002	0A80
03~02	Reserved	0x0003	0155
05~04	LED Display Configuration 0	0x0005	0E88
07~06	Reserved	-	-
09~08	Reserved	-	-
0B~0A	Reserved	-	-
0D~0C	Realtek Protocol Control	0x0200	0000
0F~0E	Reserved	0x0201	0000
11~10	Reserved	0x0202	0000
13~12	Switch MAC ID 0	0x0203	0000
15~14	Switch MAC ID 1	0x0204	0000
17~16	Switch MAC ID 2	0x0205	0000
19~18	Chip ID 0	0x0206	0000
1B~1A	Vender ID 0	0x0207	0000
1D~1C	Vender ID 1	0x0208	0000
1F~1E	Reserved	-	-
21~20	Reserved	-	-
23~22	ALT Configuration	0x0300	0004
25~24	Port Trunking Configuration	0x0307	8200
27~26	IGMP Control Register	0x0308	0000
29~28	VLAN Control Register	0x030B	0000
2B~2A	Reserved	-	-
2D~2C	Reserved	-	-
2F~2E	QoS Control Register	0x0400	0010
31~30	Port Priority Configuration 0	0x0401	0000
33~32	Port Priority Configuration 1	0x0402	0000
35~34	Reserved	-	-
37~36	Reserved	-	-
39~38	Global Port Control Register	0x0607	0010
3B~3A	Port property Configuration 0	0x060A	AFAF

<b>EEPROM Physical Address (8-Bit Data Entry) (24C04)</b>	<b>Description</b>	<b>Corresponding Internal Register Address Mapping</b>	<b>Internal Default</b>
3D~3C	Port property Configuration 1	0x060B	AFAF
3F~3E	Port property Configuration 2	0x060C	AFAF
41~40	Port property Configuration 3	0x060D	AFAF
43~42	Port property Configuration 4	0x060E	AFAF
45~44	Port property Configuration 5	0x060F	AFAF
47~46	Port property Configuration 6	0x0610	AFAF
49~48	Port property Configuration 7	0x0611	AFAF
4B~4A	Reserved	-	-
4D~4C	Reserved	-	-
4F~4E	Reserved	-	-
51~50	Reserved	-	-
53~52	Auto polling GPHY Register, packet buffer threshold, and RRCP Leaky packet.	0x0616	06EC
55~54	Reserved	-	-
57~56	Reserved	-	-
59~58	Packet Buffer shared band	0x0900	0000
5B~5A	Packet Buffer over threshold	0x0901	0000
5D~5C	Packet Buffer per-port band for FE ports	0x0902	0000
5E~5F	Packet Buffer per-port band for GE ports	0x0903	0000
61~60	Designer Diagnostic Configuration	0xFFFF	0000

## 10. Internal Register Descriptions

Symbols:

R:	Read	V:	Configurable
W:	Write	P:	Partially Configurable
RW:	Read/Write	X:	Not Configurable

### 10.1. System Configuration Register

**Table 28. System Configuration Register**

Register Base Address	Offset	Description	RW	Default	Pin	EE
0x0000	0	System Reset	RW	0	X	X
	1	Switch Parameter Register	RW	0x84A0	X	X
	2	EEPROM Check ID	R	0	X	V
	3	Reserved	-	-	-	-
	4	LED MODE	RW	0001	X	X
	5	LED Display Configuration 0	RW	1E88	X	V
	6	LED Display Configuration 1	RW	0C00	X	V

### 10.2. System Status Register

**Table 29. System Status Register**

Register Base Address	Offset	Description	RW	Default	Pin	EE
0x0100	0	Board Trapping Status	RW	0C01	X	X
	1	Loop Detect Status Register(32 bit Reg )	R	0	X	X
	2	System Fault Flag Register	R	0	X	X



### 10.3. Management Configuration Register

**Table 30. Management Configuration Register**

Register Base Address	Offset	Description	RW	Default	Pin	EE
0x0200	0	Realtek Protocol Control	RW	0001	X	V
	1	Reserved	RW	0	X	V
	2	Reserved	RW	0	X	V
	3	Switch MAC ID (0)	R	0	X	V
	4	Switch MAC ID (1)	R	0	X	V
	5	Switch MAC ID (2)	R	0	X	V
	6	Chip ID (RO)	R	0	X	V
	7	Vender ID (0) (RO)	R	0	X	V
	8	Vender ID (1) (RO)	R	0	X	V
	9	Reserved	-	-	-	-
	0A	Port Rate Control Register	RW	0	X	X
	0B	Port Rate Control Register	RW	0	X	X
	0C	Port Rate Control Register	RW	0	X	X
	0D	Port Rate Control Register	RW	0	X	X
	0E	Port Rate Control Register	RW	0	X	X
	0F	Port Rate Control Register	RW	0	X	X
	10	Port Rate Control Register	RW	0	X	X
	11	Port Rate Control Register	RW	0	X	X
	12	Reserved	-	-	-	-
	13	Reserved	-	-	-	-
	14	Reserved	-	-	-	-
	15	Reserved	-	-	-	-
	16	Reserved	-	-	-	-
	17	EEPROM RW Command Register	RW	0	X	X
	18	EEPROM RW Data Register	RW	0	X	X
	19	Port Mirror Control Register for P15-P0	RW	0	X	X
	1A	Reserved	-	-	-	-
	1B	RX Mirror Port Mask for P15-P0	RW	0	X	X
	1C	Reserved	-	-	-	-
	1D	TX Mirror Port Mask for P15-P0	RW	0	X	X
	1E	Reserved	-	-	-	-

## 10.4. Address Lookup Table (ALT) Control Register

**Table 31. Address Lookup Table (ALT) Control Register**

Register Base Address	Offset	Description	RW	Default	Pin	EE
0x0300	0	ALT Configuration	RW	0	P	P
	1	Address Learning Control (0)	RW	0	X	X
	2	Address Learning Control (1)	RW	0	X	X
	3	Unknown SA Management 0 (RO) (0)	R	-	X	X
	4	Unknown SA Management 0 (RO) (1)	R	-	X	X
	5	Unknown SA Management 0 (RO) (2)	R	-	X	X
	6	Unknown SA Management 1(RO)	R	-	X	X
	7	Port Trunking Configuration	RW	8200	P	V
	8	IGMP Control Register	RW	8200	V	V
	9	IP Multicast Router Discovery	R	0	X	X
	0A	Reserved	-	-	-	-
	0B	VLAN Control Register	RW	0	P	V
	0C	Port VLAN ID Assignment (0)	RW	0100	X	X
	0D	Port VLAN ID Assignment (1)	RW	0302	X	X
	0E	Port VLAN ID Assignment (2)	RW	0504	X	X
	0F	Port VLAN ID Assignment (3)	RW	0706	X	X
	10	Port VLAN ID Assignment (4)	RW	0908	X	X
	11	Port VLAN ID Assignment (5)	RW	0B0A	X	X
	12	Port VLAN ID Assignment (6)	RW	0D0C	X	X
	13	Port VLAN ID Assignment (7)	RW	0F0E	X	X
	14	Reserved	-	-	-	-
	15	Reserved	-	-	-	-
	16	Reserved	-	-	-	-
	17	Reserved	-	-	-	-
	18	Reserved	-	-	-	-
	19	VLAN TX Priority Tagging Control (0)	RW	FFFF	X	X
	1A	VLAN TX Priority Tagging Control (1)	RW	FFFF	X	X
	1B	Reserved	-	-	-	-
	1C	Reserved	-	-	-	-
	-	Port VLAN Configuration (32*[0,1,2])	RW		X	X
	1D	VLAN_0_Entry_Configuration_0 (member[15:0])	RW	C001	X	X
	1E	Reserved	-	-	-	-
	1F	VLAN_0_Entry_Configuration_2 (VID[11:0])	RW	0000	X	X
	20	VLAN_1_Entry_Configuration_0 (member[15:0])	RW	C002	X	X
	21	Reserved	-	-	-	-
	22	VLAN_1_Entry_Configuration_2 (VID[11:0])	RW	0000	X	X
	23	VLAN_2_Entry_Configuration_0 (member[15:0])	RW	C004	X	X
	24	Reserved	-	-	-	-
	25	VLAN_2_Entry_Configuration_2 (VID[11:0])	RW	0000	X	X
	26	VLAN_3_Entry_Configuration_0 (member[15:0])	RW	C008	X	X
	27	Reserved	-	-	-	-
	28	VLAN_3_Entry_Configuration_2 (VID[11:0])	RW	0000	X	X
	29	VLAN_4_Entry_Configuration_0 (member[15:0])	RW	C010	X	X

Register Base Address	Offset	Description	RW	Default	Pin	EE
	2A	Reserved	-	-	-	-
	2B	VLAN_4_Entry_Configuration_2 (VID[11:0])	RW	0000	X	X
	2C	VLAN_5_Entry_Configuration_0 (member[15:0])	RW	C020	X	X
	2D	Reserved	-	-	-	-
	2E	VLAN_5_Entry_Configuration_2 (VID[11:0])	RW	0000	X	X
	2F	VLAN_6_Entry_Configuration_0 (member[15:0])	RW	C040	X	X
	30	Reserved	-	-	-	-
	31	VLAN_6_Entry_Configuration_2 (VID[11:0])	RW	0000	X	X
	32	VLAN_7_Entry_Configuration_0 (member[15:0])	RW	C080	X	X
	33	Reserved	-	-	-	-
	34	VLAN_7_Entry_Configuration_2 (VID[11:0])	RW	0000	X	X
	35	VLAN_8_Entry_Configuration_0 (member[15:0])	RW	C100	X	X
	36	Reserved	-	-	-	-
	37	VLAN_8_Entry_Configuration_2 (VID[11:0])	RW	0000	X	X
	38	VLAN_9_Entry_Configuration_0 (member[15:0])	RW	C200	X	X
	39	Reserved	-	-	-	-
	3A	VLAN_9_Entry_Configuration_2 (VID[11:0])	RW	0000	X	X
	3B	VLAN_10_Entry_Configuration_0 (member[15:0])	RW	C400	X	X
	3C	Reserved	-	-	-	-
	3D	VLAN_10_Entry_Configuration_2 (VID[11:0])	RW	0000	X	X
	3E	VLAN_11_Entry_Configuration_0 (member[15:0])	RW	C800	X	X
	3F	Reserved	-	-	-	-
	40	VLAN_11_Entry_Configuration_2 (VID[11:0])	RW	0000	X	X
	41	VLAN_12_Entry_Configuration_0 (member[15:0])	RW	D000	X	X
	42	Reserved	-	-	-	-
	43	VLAN_12_Entry_Configuration_2 (VID[11:0])	RW	0000	X	X
	44	VLAN_13_Entry_Configuration_0 (member[15:0])	RW	E000	X	X
	45	Reserved	-	-	-	-
	46	VLAN_13_Entry_Configuration_2 (VID[11:0])	RW	0000	X	X
	47	VLAN_14_Entry_Configuration_0 (member[15:0])	RW	FFFF	X	X
	48	Reserved	-	-	-	-
	49	VLAN_14_Entry_Configuration_2 (VID[11:0])	RW	0000	X	X
	4A	VLAN_15_Entry_Configuration_0 (member[15:0])	RW	FFFF	X	X
	4B	Reserved	-	-	-	-
	4C	VLAN_15_Entry_Configuration_2 (VID[11:0])	RW	0000	X	X
	4D	VLAN_16_Entry_Configuration_0 (member[15:0])	RW	0000	X	X
	4E	Reserved	-	-	-	-
	4F	VLAN_16_Entry_Configuration_2 (VID[11:0])	RW	0000	X	X
	50	VLAN_17_Entry_Configuration_0 (member[15:0])	RW	0000	X	X
	51	Reserved	-	-	-	-
	52	VLAN_17_Entry_Configuration_2 (VID[11:0])	RW	0000	X	X
	53	VLAN_18_Entry_Configuration_0 (member[15:0])	RW	0000	X	X
	54	Reserved	-	-	-	-
	55	VLAN_18_Entry_Configuration_2 (VID[11:0])	RW	0000	X	X
	56	VLAN_19_Entry_Configuration_0 (member[15:0])	RW	0000	X	X
	57	Reserved	-	-	-	-
	58	VLAN_19_Entry_Configuration_2 (VID[11:0])	RW	0000	X	X

Register Base Address	Offset	Description	RW	Default	Pin	EE
	59	VLAN_20_Entry_Configuration_0 (member[15:0])	RW	0000	X	X
	5A	Reserved	-	-	-	-
	5B	VLAN_20_Entry_Configuration_2 (VID[11:0])	RW	0000	X	X
	5C	VLAN_21_Entry_Configuration_0 (member[15:0])	RW	0000	X	X
	5D	Reserved	-	-	-	-
	5E	VLAN_21_Entry_Configuration_2 (VID[11:0])	RW	0000	X	X
	5F	VLAN_22_Entry_Configuration_0 (member[15:0])	RW	0000	X	X
	60	Reserved	-	-	-	-
	61	VLAN_22_Entry_Configuration_2 (VID[11:0])	RW	0000	X	X
	62	VLAN_23_Entry_Configuration_0 (member[15:0])	RW	0000	X	X
	63	Reserved	-	-	-	-
	64	VLAN_23_Entry_Configuration_2 (VID[11:0])	RW	0000	X	X
	65	VLAN_24_Entry_Configuration_0 (member[15:0])	RW	0000	X	X
	66	Reserved	-	-	-	-
	67	VLAN_24_Entry_Configuration_2 (VID[11:0])	RW	0000	X	X
	68	VLAN_25_Entry_Configuration_0 (member[15:0])	RW	0000	X	X
	69	Reserved	-	-	-	-
	6A	VLAN_25_Entry_Configuration_2 (VID[11:0])	RW	0000	X	X
	6B	VLAN_26_Entry_Configuration_0 (member[15:0])	RW	0000	X	X
	6C	Reserved	-	-	-	-
	6D	VLAN_26_Entry_Configuration_2 (VID[11:0])	RW	0000	X	X
	6E	VLAN_27_Entry_Configuration_0 (member[15:0])	RW	0000	X	X
	6F	Reserved	-	-	-	-
	70	VLAN_27_Entry_Configuration_2 (VID[11:0])	RW	0000	X	X
	71	VLAN_28_Entry_Configuration_0 (member[15:0])	RW	0000	X	X
	72	Reserved	-	-	-	-
	73	VLAN_28_Entry_Configuration_2 (VID[11:0])	RW	0000	X	X
	74	VLAN_29_Entry_Configuration_0 (member[15:0])	RW	0000	X	X
	75	Reserved	-	-	-	-
	76	VLAN_29_Entry_Configuration_2 (VID[11:0])	RW	0000	X	X
	77	VLAN_30_Entry_Configuration_0 (member[15:0])	RW	0000	X	X
	78	Reserved	-	-	-	-
	79	VLAN_30_Entry_Configuration_2 (VID[11:0])	RW	0000	X	X
	7A	VLAN_31_Entry_Configuration_0 (member[15:0])	RW	0000	X	X
	7B	Reserved	-	-	-	-
	7C	VLAN_31_Entry_Configuration_2 (VID[11:0])	RW	0000	X	X
	7D	Insert per-port VID enabling register	RW	0	X	V
	7E	Reserved	-	-	-	-

## 10.5. Queue Control Register

**Table 32. Queue Control Register**

Register Base Address	Offset	Description	RW	Default	Pin	EE
0x0400	0	QoS Control Register	RW	0	V	V
	1	Port Priority Configuration (0)	RW	0	V	V
	2	Port Priority Configuration (1)	RW	0	V	V
	8	Reserved	RW	0	V	V

## 10.6. PHY Access Control Register

**Table 33. PHY Access Control Register**

Register Base Address	Offset	Description	RW	Default	Pin	EE
0x0500	0	PHY Access Addressing Control	RW	0	X	X
	1	PHY Access Write Data	RW	-	X	X
	2	PHY Access Read Data	R	-	X	X

## 10.7. Port Control Register

**Table 34. Port Control Register**

Register Base Address	Offset	Description	RW	Default	Pin	EE
0x0600	0~6	Reserved	-	-	-	-
	7	Global Port Control Register	RW	0010	V	V
	8	Port Access Authority Control (0)	RW	0	X	X
	9	Port Access Authority Control (1)	RW	0	X	X
	A	Port Property Configuration Register 0 (Port 0, 1)	RW	AFAF	X	V
	B	Port Property Configuration Register 1 (Port 2, 3)	RW	AFAF	X	V
	C	Port Property Configuration Register 2 (Port 4, 5)	RW	AFAF	X	V
	D	Port Property Configuration Register 3 (Port 6, 7)	RW	AFAF	X	V
	E	Port Property Configuration Register 4 (Port 8, 9)	RW	AFAF	X	V
	F	Port Property Configuration Register 5 (Port 10, 11)	RW	AFAF	X	V
	10	Port Property Configuration Register 6 (Port 12, 13)	RW	AFAF	X	V
	11	Port Property Configuration Register 7 (Port 14, 15)	RW	AFAF	X	V
	12~17	Reserved	-	-	-	-
	18	Reserved[15:2], SyncOk [1:0]	R	-	X	X
	19	Port Link Status Register 0 (Port 0, 1)	R	0	X	X
	1A	Port Link Status Register 1 (Port 2, 3)	R	0	X	X
	1B	Port Link Status Register 2 (Port 4, 5)	R	0	X	X
	1C	Port Link Status Register 3 (Port 6, 7)	R	0	X	X
	1D	Port Link Status Register 4 (Port 8, 9)	R	0	X	X
	1E	Port Link Status Register 5 (Port 10, 11)	R	0	X	X
	1F	Port Link Status Register 6 (Port 12, 13)	R	0	X	X
	20	Port Link Status Register 7 (Port 14, 15)	R	0	X	X
	21~28	Reserved	-	-	-	-

## 10.8. MIB Counter Register

**Table 35. MIB Counter Register**

Register Base Address	Offset	Description	RW	Default	Pin	EE
0x0700	0	Port MIB Counter Object Selection Register 0 (Port 0, 1)	RW	0555	X	X
	1	Port MIB Counter Object Selection Register 1 (Port 2, 3)	RW	0555	X	X
	2	Port MIB Counter Object Selection Register 2 (Port 4, 5)	RW	0555	X	X
	3	Port MIB Counter Object Selection Register 3 (Port 6, 7)	RW	0555	X	X
	4	Port MIB Counter Object Selection Register 4 (Port 8, 9)	RW	0555	X	X
	5	Port MIB Counter Object Selection Register 5 (Port 10, 11)	RW	0555	X	X
	6	Port MIB Counter Object Selection Register 6 (Port 12, 13)	RW	0555	X	X
	7	Port MIB Counter Object Selection Register 7 (Port 14, 15)	RW	0555	X	X
	8~C	Reserved	-	-	-	-

### 10.8.1. Port MIB Counter 1 Register (RX Counter) (32-bits)

**Table 36. Port MIB Counter 1 Register (RX Counter) (32-bits)**

Register Base Address	Offset	Description	RW	Default	Pin	EE
0x0700	D	Port 0 MIB Counter 1 Register (RX Counter) (32-bits)	R	0	X	X
	E	Port 1 MIB Counter 1 Register (RX Counter) (32-bits)	R	0	X	X
	F	Port 2 MIB Counter 1 Register (RX Counter) (32-bits)	R	0	X	X
	10	Port 3 MIB Counter 1 Register (RX Counter) (32-bits)	R	0	X	X
	11	Port 4 MIB Counter 1 Register (RX Counter) (32-bits)	R	0	X	X
	12	Port 5 MIB Counter 1 Register (RX Counter) (32-bits)	R	0	X	X
	13	Port 6 MIB Counter 1 Register (RX Counter) (32-bits)	R	0	X	X
	14	Port 7 MIB Counter 1 Register (RX Counter) (32-bits)	R	0	X	X
	15	Port 8 MIB Counter 1 Register (RX Counter) (32-bits)	R	0	X	X
	16	Port 9 MIB Counter 1 Register (RX Counter) (32-bits)	R	0	X	X
	17	Port 10 MIB Counter 1 Register (RX Counter) (32-bits)	R	0	X	X
	18	Port 11 MIB Counter 1 Register (RX Counter) (32-bits)	R	0	X	X
	19	Port 12 MIB Counter 1 Register (RX Counter) (32-bits)	R	0	X	X
	1A	Port 13 MIB Counter 1 Register (RX Counter) (32-bits)	R	0	X	X
	1B	Port 14 MIB Counter 1 Register (RX Counter) (32-bits)	R	0	X	X
	1C	Port 15 MIB Counter 1 Register (RX Counter) (32-bits)	R	0	X	X
	1D	Reserved	-	-	-	-
	1E	Reserved	-	-	-	-
	1F	Reserved	-	-	-	-
	20~26	Reserved	-	-	-	-

## 10.8.2. Port MIB Counter 2 Register (TX Counter) (32-bits)

**Table 37. Port MIB Counter 2 Register (TX Counter) (32-bits)**

Register Base Address	Offset	Description	RW	Default	Pin	EE
0x0700	27	Port 0 MIB Counter 2 Register (TX Counter) (32-bits)	R	0	X	X
	28	Port 1 MIB Counter 2 Register (TX Counter) (32-bits)	R	0	X	X
	29	Port 2 MIB Counter 2 Register (TX Counter) (32-bits)	R	0	X	X
	2A	Port 3 MIB Counter 2 Register (TX Counter) (32-bits)	R	0	X	X
	2B	Port 4 MIB Counter 2 Register (TX Counter) (32-bits)	R	0	X	X
	2C	Port 5 MIB Counter 2 Register (TX Counter) (32-bits)	R	0	X	X
	2D	Port 6 MIB Counter 2 Register (TX Counter) (32-bits)	R	0	X	X
	2E	Port 7 MIB Counter 2 Register (TX Counter) (32-bits)	R	0	X	X
	2F	Port 8 MIB Counter 2 Register (TX Counter) (32-bits)	R	0	X	X
	30	Port 9 MIB Counter 2 Register (TX Counter) (32-bits)	R	0	X	X
	31	Port 10 MIB Counter 2 Register (TX Counter) (32-bits)	R	0	X	X
	32	Port 11 MIB Counter 2 Register (TX Counter) (32-bits)	R	0	X	X
	33	Port 12 MIB Counter 2 Register (TX Counter) (32-bits)	R	0	X	X
	34	Port 13 MIB Counter 2 Register (TX Counter) (32-bits)	R	0	X	X
	35	Port 14 MIB Counter 2 Register (TX Counter) (32-bits)	R	0	X	X
	36	Port 15 MIB Counter 2 Register (TX Counter) (32-bits)	R	0	X	X
	37	Reserved	-	-	-	-
	38	Reserved	-	-	-	-
	39	Reserved	-	-	-	-
	3A	Reserved	-	-	-	-
	3B	Reserved	-	-	-	-
	3C	Reserved	-	-	-	-
	3D	Reserved	-	-	-	-
	3E	Reserved	-	-	-	-
	3F	Reserved	-	-	-	-
	40	Reserved	-	-	-	-

### 10.8.3. Port MIB Counter 3 Register (Diagnostic Counter) (32-bits)

**Table 38. Port MIB Counter 3 Register (Diagnostic Counter) (32-bits)**

Register Base Address	Offset	Description	RW	Default	Pin	EE
0x0700	41	Port 0 MIB Counter 3 Register (Diagnostic Counter) (32-bits)	R	0	X	X
	42	Port 1 MIB Counter 3 Register (Diagnostic Counter) (32-bits)	R	0	X	X
	43	Port 2 MIB Counter 3 Register (Diagnostic Counter) (32-bits)	R	0	X	X
	44	Port 3 MIB Counter 3 Register (Diagnostic Counter) (32-bits)	R	0	X	X
	45	Port 4 MIB Counter 3 Register (Diagnostic Counter) (32-bits)	R	0	X	X
	46	Port 5 MIB Counter 3 Register (Diagnostic Counter) (32-bits)	R	0	X	X
	47	Port 6 MIB Counter 3 Register (Diagnostic Counter) (32-bits)	R	0	X	X
	48	Port 7 MIB Counter 3 Register (Diagnostic Counter) (32-bits)	R	0	X	X
	49	Port 8 MIB Counter 3 Register (Diagnostic Counter) (32-bits)	R	0	X	X
	4A	Port 9 MIB Counter 3 Register (Diagnostic Counter) (32-bits)	R	0	X	X
	4B	Port 10 MIB Counter 3 Register (Diagnostic Counter) (32-bits)	R	0	X	X
	4C	Port 11 MIB Counter 3 Register (Diagnostic Counter) (32-bits)	R	0	X	X
	4D	Port 12 MIB Counter 3 Register (Diagnostic Counter) (32-bits)	R	0	X	X
	4E	Port 13 MIB Counter 3 Register (Diagnostic Counter) (32-bits)	R	0	X	X
	4F	Port 14 MIB Counter 3 Register (Diagnostic Counter) (32-bits)	R	0	X	X
	50	Port 15 MIB Counter 3 Register (Diagnostic Counter) (32-bits)	R	0	X	X
	51	Reserved	-	-	-	-
	52	Reserved	-	-	-	-
	53	Reserved	-	-	-	-
	54	Reserved	-	-	-	-
	55	Reserved	-	-	-	-
	56	Reserved	-	-	-	-
	57	Reserved	-	-	-	-
	58	Reserved	-	-	-	-
	59	Reserved	-	-	-	-
	5A	Reserved	-	-	-	-

### 10.9. System Parameter Register (Reserved)

**Table 39. System Parameter Register (Reserved)**

Register Base Address	Offset	Description	RW	Default	Pin	EE
0xFFFF	-	System Parameter Register (Reserved).	RW	0	V	V



## 11. Internal Register Settings

Register Symbols:

R: Read	LL: Latch Low until cleared
W: Write	LH: Latch High until cleared
RW: Read/Write	SC: Self Clearing
(W: EEPROM. Permit writing by EEPROM)	RC: Read to Clear

### 11.1. System Configuration Register

#### 11.1.1. 0x0000H: System Reset Control Register

**Table 40. 0x0000H: System Reset Control Register**

Bits	Name	Description	RW	Default
0	SRST	<p>Soft Reset.</p> <p>A soft reset will reset the system similar to a power on reset except that the user configuration will not be cleared:</p> <ol style="list-style-type: none"> <li>1. The MAC table and VLAN table data are kept.</li> <li>2. All current user configured internal register values are kept.</li> <li>3. The EEPROM download is not done again.</li> <li>4. The system restarts the auto-negotiation process.</li> </ol> <p>0: Normal (Default) 1: Soft reset</p>	W/SC	0
1	HRST	<p>Hardware Reset.</p> <p>Resets the system to the power on initial state:</p> <ol style="list-style-type: none"> <li>1. Downloads configuration from strap pin and EEPROM.</li> <li>2. Starts internal Memory self test.</li> <li>3. Clears all the MAC, VLAN tables.</li> <li>4. Resets all registers to default values.</li> <li>5. Restarts auto-negotiation.</li> </ol> <p>0: Normal (Default) 1: Hardware reset</p>	W/SC	0
15:2	Reserved	Reserved	-	-

### 11.1.2. 0x0001H: Switch Parameter Register

Note: The Write operation is reserved for IC testing mode. Do NOT write this register.

**Table 41. 0x0001H: Switch Parameter Register**

Bits	Name	Description	RW	Default
1:0	MaxPktLen[1:0]	System Valid Max Packet Length. The minimum packet length is 64 bytes. The maximum packet length is controlled by MaxPktLen[1:0]: 00: 1536 bytes (Default) 01: 1552 byte 1x: Reserved.	RW	00 HW pin MaxPktLen
2	TXIPG_Comp	Transmit IPG Compensation. Used to compensate the oscillator frequency or incoming packet Inter-Packet Gap (IPG) tolerance. 0: Give +65 ppm TXIPG compensation (Default) 1: Give +90 ppm TXIPG compensation	RW	0
3	MaxPauseCnt	Max Pause Count for Congestion Control. 0: Supports a maximum of 128 Pause frames during congestion control (Default) 1: Continue Pause mode. Do not limit the Pause frame count during congestion control.	RW	0 HW pin MaxPauseCnt
4	DisBKP48One ( $\overline{\text{EnBKP48One}}$ )	Disable Back Pressure 48 Pass One Algorithm. When the 48One algorithm is enabled, the switch will pass one incoming packet after every 48 collisions. 0: Enable 48 Pass One algorithm (Default) 1: Disable 48 Pass One algorithm	RW	0 HW pin EnBKP48One
6:5	Reserved	Internal Test Bit.	-	-
7	DisCRSBKPMODE ( $\overline{\text{EnCOLBKPMODE}}$ )	Disable Carrier Based Back Pressure Mode. Half duplex back pressure algorithm selection. 0: Select Collision-based back pressure mode 1: Select Carrier-based back pressure mode (Default)	RW	1 HW pin EnCOLBKPMODE
15:8	Reserved	Internal Test Bit.	-	-

### 11.1.3. 0x0002H: EEPROM Check ID

**Table 42. 0x0002H: EEPROM Check ID**

Bits	Name	Description	RW	Default
5:0	Reserved (EEPROM Check ID)	Reserved Bits. Used for EEPROM existence checking. Keep the value at 000000.	-	-
15:6	Reserved	Internal Test Bit.	-	-

### 11.1.4. 0x0004H: General Purpose User Defined I/O Data Register

**Table 43. 0x0004H: General Purpose User Defined I/O Data Register**

Bits	Name	Description	RW	Default
1:0	LED MODE	00: Scan LED 01: Single-color serial (default) 10: Bi-color serial 11: Reserved	RW	01 HW pin P9TXD P8TXD
15:2	Reserved	Reserved	-	-

### 11.1.5. 0x0005H: LED Display Configuration

**Table 44. 0x0005H: LED Display Configuration**

Bits	Name	Description	RW	Default
2:0	StatLED0_mode[2:0]	Mode Selection for State LED0. This state LED mode selection register controls the status type of the State LED0. The Status type is defined as follows: 000: Link/Act (Default)      001: 100Spd 010: Duplex/Col              011: Link/Act/100Spd 100: Duplex                    101: Act 110: Link                        111: Col	RW	000
5:3	StatLED1_mode[2:0]	Mode Selection for State LED1. 000: Link/Act                  001: 100Spd (Default) 010: Duplex/Col              011: Link/Act/100Spd 100: Duplex                    101: Act 110: Link                        111: Col	RW	001
8:6	StatLED2_mode[2:0]	Mode Selection for State LED2. 000: Link/Act                  001: 100Spd 010: Duplex/Col (Default)   011: Link/Act/100Spd 100: Duplex                    101: Act 110: Link                        111: Col	RW	010
12:9	EnLED[3:0]	State LED 0, 1, 2 and Diagnostic LED Enable/Disable Control. EnLED[3:0] controls enabling/disabling of DiagLED, StatLED2, StatLED1, StatLED0. 0: Disable 1: Enable If an LED is disabled, the corresponding serial clock will be masked.	RW	0111
14:13	Diagnostic mode	-	RW	00
15	Reserved	Reserved	-	-

## 11.2. System Status Register

### 11.2.1. 0x0100H: Board Trapping Status Register

**Table 45. 0x0100H: Board Trapping Status Register**

Bits	Name	Description	RW	Default
0	EEPROM_detect_status	EEPROM Existence Status. 0: Exists (Default) 1: Does not Exist	R	0
15:2	Reserved	Reserved	-	-

### 11.2.2. 0x0101H: Loop Event Detect Status Register (32-Bit Register)

**Table 46. 0x0101H: Loop Event Detect Status Register (32-Bit Register)**

Bits	Name	Description	RW	Default
15:0	LoopDetPort[15:0]	Network Loop Event Detect Port Status. If the loop detect function is enabled, the corresponding bit of LoopDetPort[15:0] will be set whenever a loop event is detected on the corresponding switch port. The set bit is cleared only when the loop event has disappeared on that port. When the loop detect function is enabled, the switch will periodically transmit one loop detect diagnostic frame. The normal interval time is approx. five minutes. When a loop event is detected, the interval time will be changed to fast mode. In fast mode the interval time is about 1 second in order to accelerate detection and diagnostic. The loop event will be reported in this Loop Detect Status Register. 0: No Loop detected on this port (Default) 1: Loop detected on this port	R	0
31:16	Reserved	Reserved	-	-

### 11.2.3. 0x0102H: System Fault Indication Register

**Table 47. 0x0102H: System Fault Indication Register**

Bits	Name	Description	RW	Default
0	Reserved	Reserved	-	-
1	TrunkFault	Trunk Fault Event Flag. The flag indicates that there is a trunk port member link down. The trunk will still continue to operate due to the trunk auto fault recovery algorithm. 0: No trunk fault detected (Default) 1: Trunk fault detected	R	0

Bits	Name	Description	RW	Default
2	LoopFault	Network Loop Fault Indication. When the Loop Fault indication is set, a loop detected port will be reported on the Loop Detect Port Register. 0: Network Loop not detected (Default) 1: Network Loop detected	R	0
5:3	Reserved	Reserved	-	-
11:6	FaultTkGroup[3:0]	The Fault Trunk Group Indicator. Indicates a Link Fault in the trunk group. A physical link failure of an enabled trunk group will cause the corresponding bit to be set in the FaultTkGroup[5:0]. This is a real time fault status report. Even though the Trunk Group's fault occurred and the fault bit is set, the corresponding trunk can still work properly as fault recovery will be auto applied. FaultTkGroup[0] indicator for Trunk 1: (port 0, 1, 2, 3) FaultTkGroup[1] indicator for Trunk 2: (port 4, 5, 6, 7) FaultTkGroup[2] indicator for Trunk 3: (port 8, 9, 10, 11) FaultTkGroup[3] indicator for Trunk 4: (port 12, 13, 14, 15) 0: Trunk OK 1: Trunk Fault detected	R	000000
15:12	Reserved	Reserved	-	-

## 11.3. Management Configuration Register

### 11.3.1. 0x0200H: Realtek Protocol Control Register

**Table 48. 0x0200H: Realtek Protocol Control Register**

Bits	Name	Description	RW	Default
0	Reserved	Reserved	RW	1
1	DisREcho	Disable Realtek Remote Echo Protocol. 0: Enable REcho protocol (Default) 1: Disable REcho protocol	RW	0
2	EnLoopDet	Enable Loop Detect Function. When enabled, the loop detect status will be reported in register 0x0101 (Loop Detect Status Register). 0: Disable (Default) 1: Enable	RW	0
15:3	Reserved	Reserved	-	-

### 11.3.2. 0x0203H: Switch MAC ID Register 0

**Table 49. 0x0203H: Switch MAC ID Register 0**

Bits	Name	Description	RW	Default
15:0	MACID[15:0]	Switch Physical MAC Address bit[15:0]. E.g., For the 48-bit MAC address '52-54-4C-01-02-03', then MACID[15:0]=54-52.	R (W: EEPROM)	0

### 11.3.3. 0x0204H: Switch MAC ID Register 1

**Table 50. 0x0204H: Switch MAC ID Register 1**

Bits	Name	Description	RW	Default
15:0	MACID[31:16]	Switch Physical MAC Address bit[31:16]. E.g., For the 48-bit MAC address '52-54-4C-01-02-03', then MACID[15:0]=54-52.	R (W: EEPROM)	0

### 11.3.4. 0x0205H: Switch MAC ID Register 2

**Table 51. 0x0205H: Switch MAC ID Register 2**

Bits	Name	Description	RW	Default
15:0	MACID[47:32]	Switch Physical MAC Address bit[47:32]. E.g., For the 48-bit MAC address '52-54-4C-01-02-03', then MACID[15:0]=54-52.	R (W: EEPROM)	0

### 11.3.5. 0x0206H: Chip Model ID

**Table 52. 0x0206H: Chip Model ID**

Bits	Name	Description	RW	Default
7:0	ChipID[7:0]	Chip ID. Identifies the chip version for programmer version control.	R (W: EEPROM)	0
15:8	Reserved	Reserved	-	-

## 11.4. 0x0207H: System Vender ID Register 0

**Table 53. 0x0207H: System Vender ID Register 0**

Bits	Name	Description	RW	Default
15:0	VenderID[15:0]	System Vender Identity Stream [15:0]. Used for the system vender to fill a code or name stream for switch device model number or vender name identification.	R (W: EEPROM)	0

## 11.5. 0x0208H: System Vender ID Register 1

**Table 54. 0x0208H: System Vender ID Register 1**

Bits	Name	Description	RW	Default
15:0	VenderID[31:16]	System Vender Identity Stream [31:16]. Used for system vender to fill a code or name stream for switch device model number or vender name identification.	R (W: EEPROM)	0

## 11.6. 0x020AH: Port 0, 1 Bandwidth Control Register

**Table 55. 0x020AH: Port 0, 1 Bandwidth Control Register**

Bits	Name	Description	RW	Default
3:0	P0RXRate[3:0]	Port 0 RX Bandwidth Control. Configures the maximum output bandwidth of the port. Bit 3 is a reserved bit. Bit[2:0] controls the maximum RX rate of the port. 000: Disables rate control (Default)      001: 128Kbps 010: 256Kbps                                      011: 512Kbps 100: 1Mbps                                         101: 2Mbps 110: 4Mbps                                         111: 8Mbps	RW	0000
7:4	P0TXRate[3:0]	Port 0 TX Bandwidth Control. Configures the maximum input bandwidth of the port. Bit 3 is a reserved bit. Bit[2:0] controls the maximum TX rate of the port. 000: Disables rate control (Default)      001: 128Kbps 010: 256Kbps                                      011: 512Kbps 100: 1Mbps                                         101: 2Mbps 110: 4Mbps                                         111: 8Mbps	RW	0000
11:8	P1RXRate[3:0]	Port 1 RX Bandwidth Control. Configures the maximum output bandwidth of the port. Bit 3 is a reserved bit. Bit[2:0] controls the maximum RX rate of the port. 000: Disables rate control (Default)      001: 128Kbps 010: 256Kbps                                      011: 512Kbps 100: 1Mbps                                         101: 2Mbps 110: 4Mbps                                         111: 8Mbps	RW	0000
15:12	P1TXRate[3:0]	Port 1 TX Bandwidth Control. Configures the maximum input bandwidth of the port. Bit 3 is a reserved bit. Bit[2:0] controls the maximum TX rate of the port. 000: Disables rate control (Default)      001: 128Kbps 010: 256Kbps                                      011: 512Kbps 100: 1Mbps                                         101: 2Mbps 110: 4Mbps                                         111: 8Mbps	RW	0000

### 11.6.1. 0x020BH~0x0211H: Port 2~15 Bandwidth Control Register

Refer to Table 55, for Configuration description of n: 1 ~ 7.

**Table 56. 0x020BH~0x0215H: Port 2~15 Bandwidth Control Register**

Bits	Name	Description	RW	Default
3:0	P2nRXRate[3:0]	Port 2n RX Bandwidth Control.	RW	0000
7:4	P2nTXRate[3:0]	Port 2n TX Bandwidth Control.	RW	0000
11:8	P2n+1RXRate[3:0]	Port 2n+1 RX Bandwidth Control.	RW	0000
15:12	P2n+1TXRate[3:0]	Port 2n+1 TX Bandwidth Control.	RW	0000

## 11.7. 0x0217H~0x0218: EEPROM RW Control Register

### 11.7.1. 0x0217H: EEPROM RW Command Register

**Table 57. 0x0217H: EEPROM RW Command Register**

Bits	Name	Description	RW	Default
7:0	EEPROM address	Assigns EEPROM Address Bits.	RW	0
10:8	CHIP_SEL[2:0]]	Assigns Chip Selection Bits.	RW	0
11	Read/Write Operation	0: Write Operation 1: Read Operation	RW	0
12	Status	0: Idle 1: Busy	RW	0
13	Operation Success status	0: Operation Succeeded 1: Operation Failed (Read to clear)	RW	0
15:14	Reserved	Reserved	-	-

### 11.7.2. 0x0218H: EEPROM RW Data Register

**Table 58. 0x0218H: EEPROM RW Data Register**

Bits	Name	Description	RW	Default
7:0	WdataEE[7:0]	Data to be Written to EEPROM.	RW	0
15:8	RdataEE[15:8]	Data Read from EEPROM.	R	0





### 11.9.2. 0x0301H: Address Learning Control Register 0

**Table 63. 0x0301H: Address Learning Control Register 0**

Bits	Name	Description	RW	Default
15:0	DisMacLearn[15:0]	Per-Port Disable Mac Address Learning Function (Ports 0~15). DisMacLearn[15:0] control port[15:0]. The Layer 2 MAC address learning function can be per-port disabled for security management purposes. Generally this register is used with the ALT Configuration Register (0x0300) bits 'DisMacAging'. 0: Enable learning (Default)                      1: Disable learning	RW	0

### 11.9.3. 0x0307H: Port Trunking Configuration Register

**Table 64. 0x0307H: Port Trunking Configuration Register**

Bits	Name	Description	RW	Default
0	Reserved	Reserved	-	-
4:1	EnTrunk[3:0]	Trunk Group Enable/Disable Control. Enables trunk groups. EnTrunk[0] control for Trunk 1: (port 0, 1, 2, 3). EnTrunk[1] control for Trunk 2: (port 4, 5, 6, 7). EnTrunk[2] control for Trunk 3: (port 8, 9, 10, 11). EnTrunk[3] control for Trunk 4: (port 12, 13, 14, 15). 0: Disable Trunking (Default)                      1: Enable Trunking	RW	0x00
15:7	Reserved	Reserved	-	-

### 11.9.4. 0x0308H: IGMP Snooping Control Register

**Table 65. 0x0308H: IGMP Snooping Control Register**

Bits	Name	Description	RW	Default
0	EnIGMPsnooping	Enable IGMP Snooping. The switch controller features an ASIC-based auto IGMP v1 snooping function. No software support is required. When enabled, the switch can automatically snoop IGMP packets and build up an IP multicast address table. The discovered IP multicast Router port will be indicated in the 'IP Multicast Router Port Discovery Register'. 0: Disable IGMP snooping (Default)                      1: Enable IGMP snooping	RW	0
15:1	Reserved	Reserved	-	-

### 11.9.5. 0x0309H: IP Multicast Router Port Discovery Register (32 bits)

**Table 66. 0x0309H: IP Multicast Router Port Discovery Register (32 bits)**

Bits	Name	Description	RW	Default
23:0	IPMRouterDISC[23:0]	IP Multicast Router Ports Discovery Result. This is a bit map that indicates which port is an IP Multicast Router port. IPMRouterDISC[23:0] maps to port 15 ~ 0 0: Normal port (Default) 1: IP multicast Router port	R	0
31:24	Reserved	Reserved	-	-

### 11.9.6. 0x030BH: VLAN Control Register

**Table 67. 0x030BH: VLAN Control Register**

Bits	Name	Description	RW	Default
0	EnHomeVlan	Enable VLAN Function. When the VLAN function is enabled, the power on default VLAN topology is 16 Home VLANs for non-EEPROM environments. The VLAN topology can be configured by the Port VLAN Configuration Register. 0: Disable VLAN (Default) 1: Enable VLAN	RW	0 HW pin. EnHomeVLAN
1	EnUCleaky	Unicast Packet Inter-VLAN Leaky Control. Enables inter-VLAN communication for unicast forwarding packets. Normally, inter-VLAN packet switching is not valid. The RTL8316C supports a control bit to enable inter-VLAN communication in the switch without an external router. 0: Disable (Default) 1: Enable	RW	0
2	EnARpleaky	ARP broadcast Packet Inter-VLAN Leaky Control. Enables inter-VLAN communication for ARP broadcast packet forwarding. 0: Disable (Default) 1: Enable	RW	0
3	EnIPMleaky	IP Multicast Packet Inter-VLAN Leaky Control. Enables inter-VLAN communication for IP multicast packet forwarding. 0: Disable (Default) 1: Enable	RW	0
4	En8021Qaware	Enable 802.1Q VLAN Tag Aware. If 802.1Q VLAN aware, the switch supports the ability to identify the VLAN ID from the VLAN tag. Reset to force the switch to ignore the VLAN tag header and classify the VLAN only by the PVID. 0: Disable 802.1Q VLAN aware (Default) 1: Enable 802.1Q VLAN aware	RW	0

Bits	Name	Description	RW	Default
5	EnIR_TagAdmit	Ingress Rule for Acceptable Frame Types Control. If this parameter is set to 'Admit only VLAN-Tagged Frames', any frames received on that port that carry no VID (i.e., Untagged Frames or Priority-Tagged Frames) are discarded. If this parameter is set to 'Admit all Frames', all incoming Priority-Tagged and Untagged Frames are associated with a VLAN by the ingress rule on the receiving port. 0: Admit all Frames (Default) 1: Admit only VLAN-Tagged Frames	RW	0
6	EnIR_MembSet	Ingress Rule for Ingress Filtering control. If the Enable Ingress Filtering parameter 'EnIR_MembSet' is set, then all frames received on a port whose VLAN classification does not include that port in its member set shall be discarded. 0: Disable ingress member set Filtering (Default) 1: Enable ingress member set filtering	RW	0
15:7	Reserved	Reserved	-	-

### 11.9.7. 0x030C~0x0313H: Port VLAN ID Assignment Index Register 0~7

For Port(2n), and Port(2n+1) the register is defined as follows: where n=0, 1, 2, ... 6, 7 (Addr: 0x030CH + n).

**Table 68. 0x030C~0x0317H: Port VLAN ID Assignment Index Register 0~7**

Bits	Name	Description	RW	Default
7:0	P(2n)_VIDIndex[7:0]	Port(2n) VID Assignment Index. Bit[4:0]: Port VID assignment index. Use the index value as the offset to map to the VLAN configuration table to get a 12-bit Port VLAN ID. Bit[7:5]: Reserved	RW	n
15:8	P(2n+1)_VIDIndex[7:0]	Port(2n+1) VID Assignment Index. Bit[4:0]: Port VID assignment index. Use the index value as the offset to map to the VLAN configuration table to get a 12-bit Port VLAN ID. Bit[7:5]: Reserved	RW	2n+1

## 11.9.8. 0x0319~0x031AH: VLAN Output Port Priority-Tagging Control Register 0, 1

For Port(8n), Port(8n+1), .... ~ Port(8n+7) the register is defined as follows: n=0, 1

**Table 69. 0x0319~0x031AH: VLAN Output Port Priority-Tagging Control Register 0, 1**

Bits	Name	Description	RW	Default
1:0	P(8n)_PriTagCtl[1:0]	Port(8n) VLAN Output Priority Tag/Untag Control. 00: Remove the VLAN tag from a tagged frame 01: Insert priority tag into an untagged high-priority frame (set priority field: 7, VID field: 0 for high priority frame) 10: Insert priority tag into all untagged frames. (Set priority field: 7, VID field: 0 for high priority frame; set priority field: 0, VID field: 0 for low priority frame) 11: Do not touch (Do not modify the packet) (Default)	RW	11
3:2	P(8n+1)_PriTagCtl[1:0]	Port(8n+1) VLAN Output Priority Tag/Untag Control.	RW	11
5:4	P(8n+2)_PriTagCtl[1:0]	Port(8n+2) VLAN Output Priority Tag/Untag Control.	RW	11
7:6	P(8n+3)_PriTagCtl[1:0]	Port(8n+3) VLAN Output Priority Tag/Untag Control.	RW	11
9:8	P(8n+4)_PriTagCtl[1:0]	Port(8n+4) VLAN Output Priority Tag/Untag Control.	RW	11
11:10	P(8n+5)_PriTagCtl[1:0]	Port(8n+5) VLAN Output Priority Tag/Untag Control.	RW	11
13:12	P(8n+6)_PriTagCtl[1:0]	Port(8n+6) VLAN Output Priority Tag/Untag Control.	RW	11
15:14	P(8n+7)_PriTagCtl[1:0]	Port(8n+7) VLAN Output Priority Tag/Untag Control.	RW	11

## 11.10. 0x031D~0x037CH: VLAN Table Configuration Register

Each VLAN configuration entry requires three 16-bit registers. There are 32 VLAN configuration entries in the VLAN table. The VLAN configuration entry is combined with three registers: VLAN\_Entry\_Configuration\_0, 1, 2. For VLAN m, its format is defined as follows: m=0, 1, 2, .... 31.

### 11.10.1. Register VLAN(m)\_Entry\_Configuration\_0 (Addr: (0x031DH+3m))

**Table 70. Register VLAN(m)\_Entry\_Configuration\_0 (Addr: (0x031DH+3m))**

Bits	Name	Description	RW	Default
15:0	VLAN(m)_PM[15:0]	VLAN (entry m) Port Member, 24-bit Map (bit 0~15). Bit value 0: Port is not a member of the VLAN Bit value 1: Port is a member of the VLAN	RW	-

### 11.10.2. Register VLAN(m)\_Entry\_Configuration\_2 (Addr: (0x031DH+3m+2))

**Table 71. Register VLAN(m)\_Entry\_Configuration\_2 (Addr: (0x031DH+3m+2))**

Bits	Name	Description	RW	Default
11:0	VLAN(m)_VID[11:0]	VLAN(m) VID[11:0] Bit 11~0. Each VLAN must be assigned a 12-bit VID.	RW	0
15:12	Reserved	Reserved	-	-

## 11.11. 0x037D: Insert Per-Port VID (PVID) Enabling Register 0

**Table 72. Insert Per-Port VID (PVID) Enabling Register 0**

Bits	Name	Description	RW	Default
15:0	InsPVID_0[15:0]	Enables Per-Port Insert PVID Function (P15-P0). 0: Disable (default)      1: Enable	RW	0

## 11.12. QoS Configuration Register

### 11.12.1. 0x0400H: QoS Control Register

**Table 73. 0x0400H: QoS Control Register**

Bits	Name	Description	RW	Default
0	EnDSPri	Enable TCP/IP TOS/DS (DiffServ) Based Priority QoS. 0: Disabled (Default) 1: Enabled When enabled, the priority definition is defined as follows: High Priority: If TOS/DS[0:5]: (EF) ‘101110’; (AF) ‘001010’, ‘010010’, ‘011010’, ‘100010’; (Network Control) ‘11x000’ Low Priority: TOS/DS = Other codepoint values <i>Note 1: The DS[0:5] bit location is equal to the mapping of TOS[0:5] = {precedence[2:0], Delay, Throughput, Reliability}.</i> <i>Note 2: DS=Differentiated Services, EF= Expected Forwarding, AF= Assured Forwarding.</i>	RW	0
1	En8021pPri	Enable 802.1p VLAN Tag Based Priority QoS Function. 0: Disable (Default)           1: Enable	RW	0
2	EnFCAutoOff	Enable Flow Control Ability Auto Turn Off for QoS. Enabled: Enables auto turn off of a port’s queue flow control ability for 1~2 seconds whenever the port receives a high priority frame. The flow control ability of this port is re-enabled when no high priority frames are received at this port during a 1~2 second period. Disabled: When EnFCAutoOff is disabled, the flow control ability of this port for any packet will be enabled as it was set. 0: Disabled (Default)           1: Enabled	RW	0
4:3	QWEIGHT[1:0]	Weighted Round Robin Ratio Setting of Priority Queue. The frame service rate of High-pri queue to Low-pri queue is: 00: 4:1 (Default)               01: 8:1 10: 16:1                         11: High priority queue first always	RW	00
15:5	Reserved	Reserved	-	-

### 11.12.2. 0x0401: Port Priority Configuration Register 0

**Table 74. 0x0401: Port Priority Configuration Register 0**

Bits	Name	Description	RW	Default
15:0	PortPriCfg[15:0]	Port-based Priority Setting (Port0 ~ Port15). Sets the priority QoS based on the physical port. If a port is set as a high priority port, all packets received from that port will be treated as high priority packets. Bit value 1: Sets that port as a high priority port Bit value 0: Sets that port as a low priority port	RW	0

Note: Ports 0~15 map to bits 0~15.

## 11.13. PHY Access Control Register

### 11.13.1. 0x0500H: PHY Access Control Register

**Table 75. 0x0500H: PHY Access Control Register**

Bits	Name	Description	RW	Default
4:0	REG_addr	PHY Register Address Setting for the PHY Access Command.	RW	0
9:5	PHY_ID[4:0]	PHY ID (PHY Address) Setting for the PHY Access Command. RTL8316C connected PHY ID is fixed as: Fast Ethernet Port0 ~ 15. PHY ID: 16,17, ..., 30, 31.	RW	0
13:10	Reserved	Reserved	-	0
14	PHY_RW	PHY Access Command. 0: PHY Access Read command (Default) 1: PHY Access Write command	RW	0
15	PHYCmdExeSta	PHY Access Command Execution Status. 0: Idle (Default) 1: Busy	R	0

### 11.13.2. 0x0501H: PHY Access Write Data Register

**Table 76. 0x0501H: PHY Access Write Data Register**

Bits	Name	Description	RW	Default
15:0	PHY_WD[15:0]	PHY Access Write Out Data (16 bits).	RW	0

### 11.13.3. 0x0502H: PHY Access Read Data Register

**Table 77. 0x0502H: PHY Access Read Data Register**

Bits	Name	Description	RW	Default
15:0	PHY_RD[15:0]	PHY Access Read In Data (16 bits).	R	0



## 11.14. Port Control Register

### 11.14.1. 0x0607H: Global Port Control Register

**Table 78. 0x0607H: Global Port Control Register**

Bits	Name	Description	RW	Default
0	DisFDFC ( $\overline{\text{EnFDFC}}$ )	Disable Full Duplex Flow Control (802.3x PAUSE Ability). This control bit will be applied to the switch only when a software reset is sent to the switch. This function can also be directly controlled by PHY register access through the PHY Access Control Register 0: Enable 802.3x Pause ability (Default) 1: Disable 802.3x Pause ability	RW	0 HW pin: EnFDFC
1	DisBKP ( $\overline{\text{EnBKP}}$ )	Globally Disable Half Duplex Back Pressure Flow Control Ability. Set to globally disable the back pressure flow control ability of all ports. 0: Enable back pressure flow control ability (Default) 1: Disable back pressure flow control ability	RW	0 HW pin. EnBKP
2	DisBCSFC	Disable Broadcast Packet Strict Flood Control. This control function is used under 802.3x flow control mode. Strict flood mode will drop broadcast packets (DA: FF-FF-FF-FF-FF-FF) if any destination port member is congested. Loose flood mode allows broadcast packets to be flooded to all non-congested ports. 0: Enable Broadcast Packet Strict Flood (Strict flood mode) (default) 1: Disable Broadcast Packet Strict Flood (Loose flood mode)	RW	0 HW pin. DisBCSFC
3	DisIPMCFC	Disable IP Multicast Packet Strict Flood Control. This control function is used under 802.3x flow control mode. Strict flood mode will drop IP Multicast packets (DA: 01-00-5E-XX-XX-XX) if any destination port member is congested. Loose flood mode allows IP multicast packets to be flooded to all non-congested ports. 0: Enable IP Multicast Packet Strict Flood (Strict flood mode) (default) 1: Disable IP Multicast Packet Strict Flood (Loose flood mode)	RW	0
4	DisBRDCTRL ( $\overline{\text{EnBRDCTRL}}$ )	Disable Broadcast Storm Filtering Control. Set to disable the broadcast storm filtering control function. 1: Disable Broadcast storm filtering control (Default) 0: Enable Broadcast storm filtering control	RW	1 HW pin: EnBRDCTRL
15:5	Reserved	Reserved	-	-

### 11.14.2. 0x0608H: Port Disable Control Register 0

**Table 79. 0x0608H: Port Disable Control Register 0**

Bits	Name	Description	RW	Default
15:0	PortDisable[15:0]	Port Enable/Disable Control for Ports 0~15. Bit value 0: Port enable Bit value 1: Port disable When disabled, the port will disable packet transmission and reception except for Realtek Remote Control Packets.	RW	0

*Note: Ports 0~15 map to bits 0~15.*

### 11.14.3. 0x060AH~0x0615. Port Property Configuration Registers 0 ~ 7

For Port(2n) and Port(2n+1) the Port Property is defined as follows: n = 0, 1, 2, ..., 7 (Addr: 0x060AH +n); where n=0~7 for Fast Ethernet ports.

**Table 80. 0x060AH~0x0615. Port Property Configuration Register 0 ~ 7**

Bits	Name	Description	RW	Default
7:0	P(2n)_Property[7:0]	Port(2n) Port Property Configuration. Bit [3:0]: Media Capability[3:0]= (100F, 100H, 10F, 10H). Bit [5]: Pause ability (1: Enable). Bit [6]: AsyPause ability (Asynchronous Pause) (1: Enable) Bit [7]: Enable Auto Negotiation (1: Enable).	RW	100M. 0xAF
15:8	P(2n+1)_Property[7:0]	Port(2n+1) Port Property Configuration. Bit [3:0]: Media Capability[3:0]= {100F, 100H, 10F, 10H}. Bit [5]: Pause ability (1: Enable). Bit [6]: AsyPause ability (Asynchronous Pause) (1: Enable). Bit [7]: Enable Auto Negotiation (1: Enable).	RW	100M. 0xAF

*Note: A configuration update of these registers requires a software reset (via write Reg. 0x0000 bit 0 =1) to force the configuration to be written to the PHY register and restart the auto-negotiation process.*

### 11.14.4. 0x0619H~0x0624. Port Link Status Register 0 ~ 7

For Port(2n) and Port(2n+1) the Port Properties are defined as follows:

(n: 0,1,2,.. ..., 7) (Addr: 0x0619H +n).

**Table 81. 0x0619H~0x0625. Port Link Status Register 0 ~ 7**

Bits	Name	Description	RW	Default
7:0	P(2n)_LinkStatus[7:0]	<p>Port (2n) Port Link Status.</p> <p>Bit [1:0]: Link Speed[1:0]:            00: 10Mbps            01: 100Mbps            10: 1000Mbps            11: NA.</p> <p>Bit [2]: Full Duplex:            0: Half duplex            1: Full duplex            Bit[3]: Reserved.</p> <p>Bit [4]: Link Up:            0: Link down            1: Link up</p> <p>Bit [5]: Flow Control (Back Pressure or 802.3x):            For ports 0~15 (Fast Ethernet ports). Defined as Pause ability.            In half duplex mode. Defined as back pressure ability.            0: Flow control disabled            1: Flow control enabled</p> <p>Bit [6]: AsyPause Ability (Asymmetric Pause):            For ports 0~16 (Fast Ethernet ports) Do not Care.</p> <p>Bit [7]: Enable Auto Negotiation (AN):            0: Disable AN            1: Enable AN</p>	R	0

Bits	Name	Description	RW	Default
15:8	P(2n+1)_LinkStatus[7:0]	<p>Port(2n+1) Port Link Status.</p> <p>Bit [1:0]: Link Speed[1:0]:            00: 10Mbps            01: 100Mbps            10: 1000Mbps            11: NA.</p> <p>Bit [2]: Full Duplex:            0: Half duplex            1: Full duplex</p> <p>Bit[3]: Reserved.</p> <p>Bit [4]: Link Up:            0: Link down            1: Link up</p> <p>Bit [5]: Flow Control (Back Pressure or 802.3x):            For ports 0~15 (Fast Ethernet ports). Defined as Pause ability.            In half duplex mode. Defined as back pressure ability.            0: Flow control disabled            1: Flow control enabled</p> <p>Bit [6]: AsyPause Ability (Asymmetric Pause):            For ports 0~15 (Fast Ethernet ports) Don't Care.            In half duplex mode. Don't Care.            0: Flow control disabled            1: Flow control enabled</p> <p>Bit [7]: Enable Auto Negotiation (AN):            0: Disable AN            1: Enable AN</p>	R	0

## 12. MIB Counter Register

### 12.1. 0x0700H~0x0707H: Port MIB Counter Object Selection Register 0~7

For Port(2n), Port(2n+1), the Port MIB Counter Object Selection Register is defined as follows:  
(n = 0, 1, 2, ..., 7) (Addr=0x0700H +n).

**Table 82. 0x0700H~0x0707H: Port MIB Counter Object Selection Register 0~7**

Bits	Name	Description	RW	Default
1:0	P(2n)CNT1_MIBS [1:0]	Port(2n) Counter_1 MIB Object Selection. P(2n)CNT_1_MIBS [1:0] 00: MIB object: RX byte count 01: MIB object: RX packet count (Default) 10: MIB object: CRC error packet count 11: MIB object: Collision packet count RX byte count. This counter is incremented once for every data byte of a received and forwarded packet (includes both good and bad packets). RX packet count. This counter is incremented once for every received and forwarded packet (includes both good and bad packets).	RW	01
3:2	P(2n)CNT2_MIBS [1:0]	Port(2n) Counter_2 MIB Object Selection. P(2n)CNT_2_MIBS [1:0] 00: MIB object: TX byte count 01: MIB object: TX packet count (Default) 10: MIB object: CRC error packet count 11: MIB object: Collision packet count TX byte count. This counter is incremented once for every data byte of a transmitted packet (includes both good and bad packets). TX packet count. This counter is incremented once for every transmitted packet (includes both good and bad packets).	RW	01
5:4	P(2n)CNT3_MIBS [1:0]	Port(2n) Counter_3 MIB Object Selection P(2n)CNT_3_MIBS [1:0] 00: MIB object: Drop byte count 01: MIB object: Drop packet count (Default) 10: MIB object: CRC error packet count 11: MIB object: Collision packet count Drop packet count. This counter is incremented once for every drop of a received packet. Packet drop events could be due to undersize, oversize, CRC error, lack of resources, local packet, point-to-point control packet (ex. Pause packet, LACP packet). CRC error packet count. This counter is incremented once for every received packet with a valid length but with a CRC error. Collision packet counter. This counter is incremented once for every collision event detected.	RW	01

Bits	Name	Description	RW	Default
7:6	P(2n+1)CNT1_MIBS [1:0]	Port(2n+1) Counter_1 MIB Object Selection.	RW	01
9:8	P(2n+1)CNT2_MIBS [1:0]	Port(2n+1) Counter_2 MIB Object Selection.	RW	01
11:10	P(2n+1)CNT3_MIBS [1:0]	Port(2n+1) Counter_3 MIB Object Selection.	RW	01

## 12.2. 0x070DH ~071CH: Port MIB Counter 1 Register (RX Counter) (32 bits)

The MIB counters are 32-bit counters. After power on reset, the counters are all reset to 0. A read access of the MIB counter will NOT reset the counter to 0. When a MIB counter MIB object is changed, then the counter will be reset to 0 and the count will restart.

The time before the next read of the same counter should not be longer than the counter's timeout. The timeout of the 32-bit MIB counter depends on the object type and the port speed, and is calculated as follows:

Packet counter timeout is calculated based on 64-byte packets, and byte counter timeout is calculated based on 1518 byte packets).

**Table 83. MIB Counter Timeout**

Port Speed	MIB Object Type	MIB Counter Timeout (Sec.)
100Mbps	Packet Count	28862
	Byte Count	348
10Mbps	Packet Count	288621
	Byte Count	3481

### 12.2.1. For Port(n) MIB Counter 1 Register (32-bit). n=0, 1, 2, ... 15 (Addr: 0x070DH+n)

**Table 84. 0x070DH~071CH: Port MIB Counter 1 Register (RX Counter) (32 bits)**

Bits	Name	Description	RW	Default
31:0	Port(n)_MIB_CNT_1[31:0]	Port(n) MIB Counter_1[31:0]	R	0

### 12.2.2. 0x0727~0736H: Port MIB Counter 2 Register (TX Counter) (32-bits)

For Port(n) MIB Counter 2 Register (32-bit): n = 0, 1, 2, ... 15 (Addr: 0x0727H+n).

**Table 85. 0x0727~0736H: Port MIB Counter 2 Register (TX Counter) (32 bits)**

Bits	Name	Description	RW	Default
31:0	Port(n)_MIB_CNT_2[31:0]	Port(n) MIB Counter_2[31:0]	R	0

### 12.2.3. 0x0741~0750H: Port MIB Counter 3 Register (Diagnostic Counter) (32-bits)

For Port(n) MIB Counter 3 Register (32-bit): n = 0, 1, 2, ... 15 (Addr: 0x0741H+n).

**Table 86. 0x0741~0750H: Port MIB Counter 3 Register (Diagnostic Counter) (32 bits)**

Bits	Name	Description	RW	Default
31:0	Port(n)_MIB_CNT_3[31:0]	Port(n) MIB Counter_3[31:0]	R	0

## 13. Characteristics

### 13.1. Absolute Maximum Ratings

WARNING: Absolute maximum ratings are limits beyond which permanent damage may be caused to the device or which may affect device reliability. All voltages are specified reference to GND unless otherwise specified.

**Table 87. Absolute Maximum Ratings**

Parameter	Min	Max	Units
Storage Temperature	-10	+125	°C
DVDD, RVDD, AVDD Supply Referenced to GND	GND-0.3	+3.63	V
VDD Supply Reference to GND	GND-0.3	+1.98	V
Digital Input Voltage	GND-0.3	DVDD+0.3	V

### 13.2. Operating Range

**Table 88. Operating Range at 3.3V**

Parameter	Min	Max	Units
Ambient Operating Temperature	0	70	°C
3.3V Vcc Supply Voltage Range (RVDD, DVDD)	3.15	3.45	V
1.8V Vcc Supply Voltage Range (VDD)	1.71	1.89	V

**Table 89. Operating Range at 2.5V**

Parameter	Min	Max	Units
Ambient Operating Temperature	0	70	°C
2.5V Vcc Supply Voltage Range (RVDD, DVDD)	2.375	2.625	V
1.8V Vcc Supply Voltage Range (VDD)	1.71	1.89	V

### 13.3. DC Characteristics

Supply Voltage VDD: 3.3V  $\pm$  5%, and 2.5V  $\pm$  5%.

#### 13.3.1. DC Characteristics at 3.3V

**Table 90. DC Characteristics at 3.3V**

Parameter	Symbol	Conditions	Min	Typical	Max	Units
Power Supply Current (Without Scan LED)	I <sub>cc</sub>	16FE, wire-speed traffic load 16FE all idle	-	-	200 130	mA
Scan LED Current (3x16)	I <sub>cc</sub>	16FE, wire-speed traffic load 16FE all idle	-	-	77 79	mA
Total Power Consumption	PS	16FE, wire-speed traffic load 16FE all idle	-	-	660 429	mW
TTL Input High Voltage	V <sub>ih</sub>	-	1.5	-	-	V
TTL Input Low Voltage	V <sub>il</sub>	-	-	-	0.8	V
TTL Input Current	I <sub>in</sub>	-	-10	-	10	$\mu$ A
TTL Input Capacitance	C <sub>in</sub>	-	-	2.9	-	pF
Output High Voltage	V <sub>oh</sub>	-	2.6	-	3.6	V
Output Low Voltage	V <sub>ol</sub>	-	0	-	0.45	V

#### 13.3.2. DC Characteristics at 2.5V

**Table 91. DC Characteristics at 2.5V**

Parameter	Symbol	Conditions	Min	Typical	Max	Units
Power Supply Current	I <sub>cc</sub>	16FE, wire-speed traffic load 16FE all idle	-	-	180 120	mA
Scan LED Current (3x16)	I <sub>cc</sub>	16FE, wire-speed traffic load 16FE all idle	-	-	27 29	mA
Total Power Consumption	PS	16FE, wire-speed traffic load 16FE all idle	-	-	450 300	mW
TTL Input High Voltage	V <sub>ih</sub>	-	1.5	-	-	V
TTL Input Low Voltage	V <sub>il</sub>	-	-	-	0.8	V
TTL Input Current	I <sub>in</sub>	-	-10	-	10	$\mu$ A
TTL Input Capacitance	C <sub>in</sub>	-	-	2.9	-	pF
Output High Voltage	V <sub>oh</sub>	-	2.25	-	2.8	V
Output Low Voltage	V <sub>ol</sub>	-	0	-	0.45	V

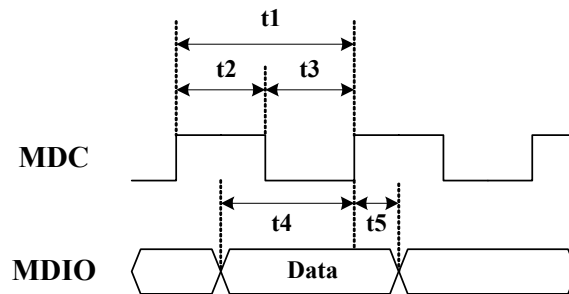
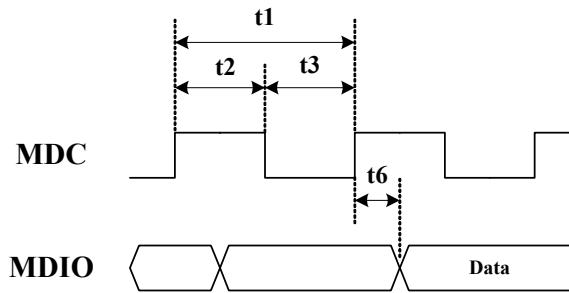
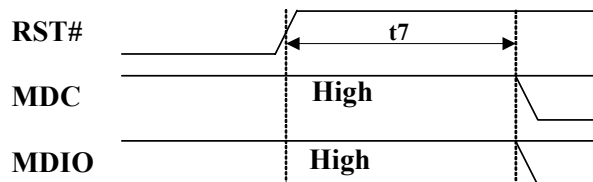


## 13.4. AC Characteristics

### 13.4.1. PHY Management (SMI) Timing

**Table 92. PHY Management (SMI) Timing**

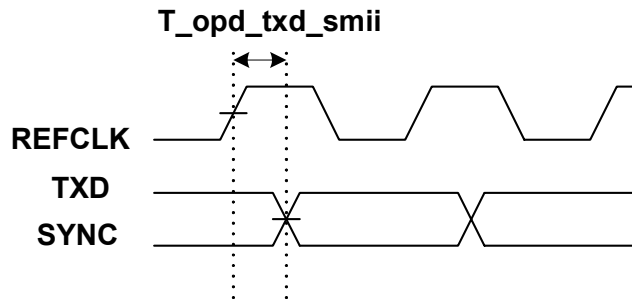
Symbol	Description	Minimum	Typical	Maximum	Units
t1	MDC Clock Period	-	1360	-	ns
t2	MDC High Level Width	-	680	-	ns
t3	MDC Low Level Width	-	680	-	ns
t4	MDIO to MDC Rising Setup Time (Write Bits)	-	680	-	ns
t5	MDIO to MDC Rising Hold Time (Write Bits)	-	695	-	ns
t6	MDC to MDIO Delay (Read Bits)	20	-	-	ns
t7	MDC/MDIO Activates from RST# Deasserted	-	56	-	ms


**Figure 17. MDC/MDIO Write Timing**

**Figure 18. MDC/MDIO Read Timing**

**Figure 19. MDC/MDIO Reset Timing**

### 13.4.2. SMII Transmit Timing

**Table 93. PHY Management (SMI) Timing**

Symbol	Description	Minimum	Typical	Maximum	Units
T_opd_txd_smii	REFCLK Rising Edge to TXD (SYNC) Delay.	2	4	5	ns

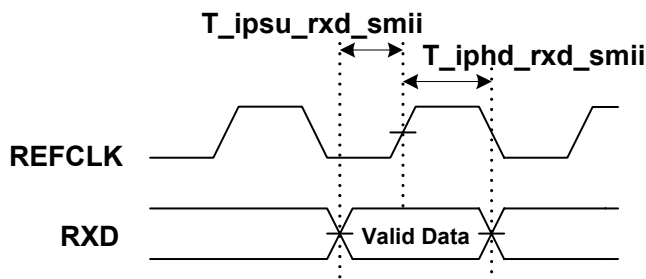


**Figure 20. SMII Transmit Timing**

### 13.4.3. SMII Receive Timing

**Table 94. SMII Receive Timing**

Symbol	Description	Minimum	Typical	Maximum	Units
T_ipsu_rxd_smii	RXD Setup Time to REFCLK.	2	-	-	ns
T_iphd_rxd_smii	RXD Hold Time from REFCLK.	1.5	-	-	ns



**Figure 21. SMII Receive Timing**

## 14. Thermal Data

### Thermal Characteristics

Heat generated by the chip causes a temperature rise of the package. If the temperature of the chip ( $T_j$ , junction temperature) is beyond the design limits, there will be negative effects on operation and the life of the IC package. Heat dissipation, either through a heat sink or electrical fan, is necessary to provide a reasonable environment ( $T_a$ , ambient temperature) in a closed case. As power density increases, thermal management becomes more critical. A method to estimate the possible  $T_a$  is outlined below.

Thermal parameters are defined according to JEDEC standard JESD 51-2, 51-6:

$\theta_{JA}$  (Thermal resistance from junction to ambient), represents resistance to heat flow from the chip to ambient air. This is an index of heat dissipation capability. A lower  $\theta_{JA}$  means better thermal performance.

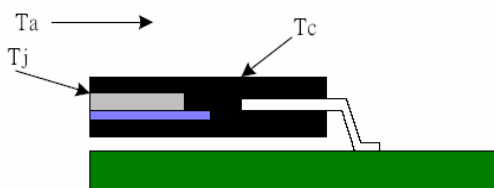
$$\theta_{JA} = (T_j - T_a) / P_h, \text{ where } T_j \text{ is the junction temperature}$$

$T_a$  is the ambient temperature

$P_h$  is the power dissipation

$\theta_{JC}$  (Thermal resistance from junction to case), represents resistance to heat flow from the chip to the package top case.  $\theta_{JC}$  is important when an external heat sink is attached on the package top.

$$\theta_{JC} = (T_j - T_c) / P_h, \text{ where } T_j \text{ is the junction temperature.}$$



**Figure 22. Cross-Section of 128-Pin PQFP**

### Thermal Operating Range

**Table 95. Thermal Operating Range**

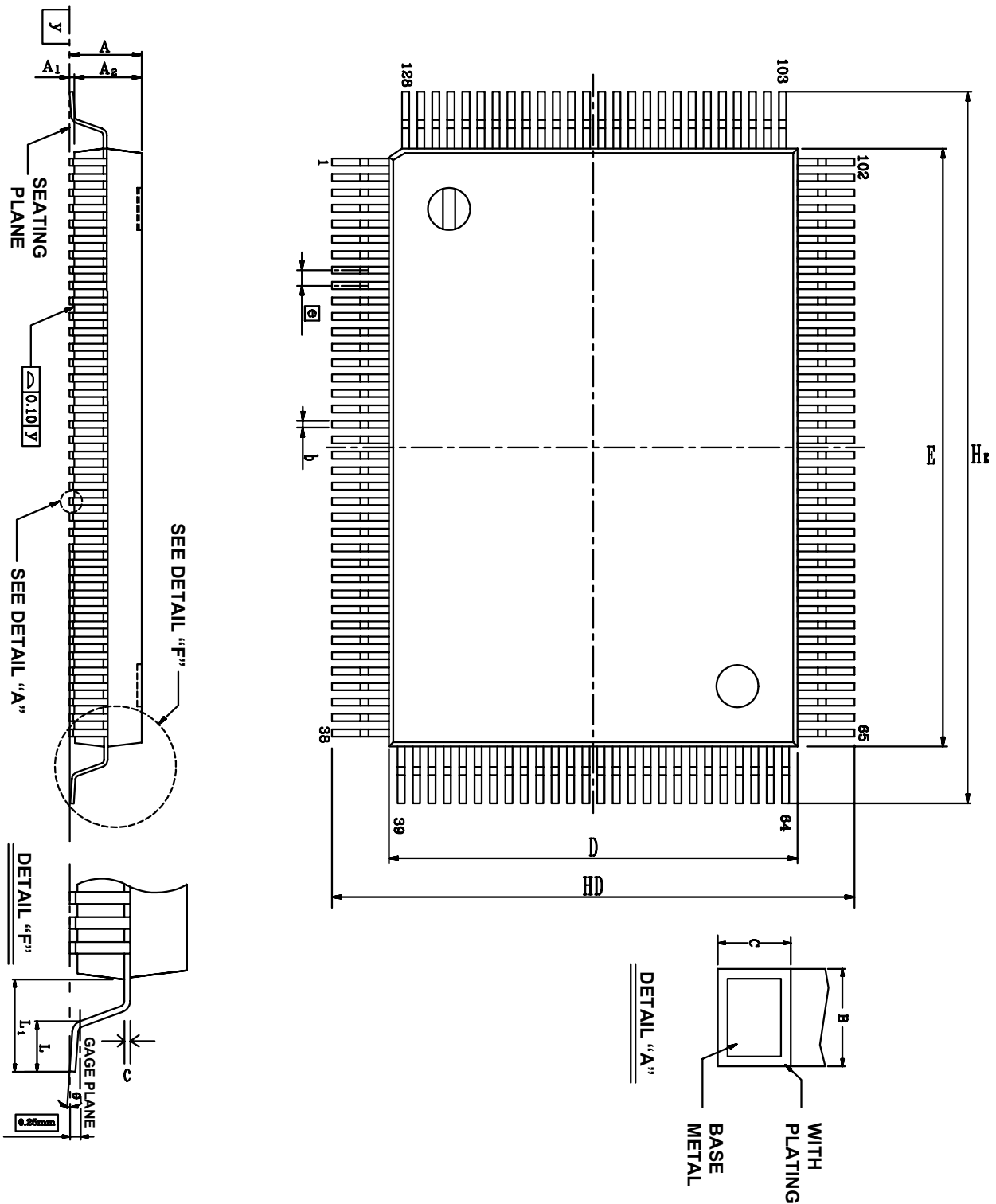
Parameter	SYM	Conditions	Min	Typical	Max	Units
Junction Operating Temperature	$T_j$	-	-	25	125	°C
Junction Operating Temperature	$T_a$	-	-	25	70	°C

### Thermal Resistance

**Table 96. Thermal Resistance**

Parameter	SYM	Conditions	Min	Typical	Max	Units
Thermal Resistance: Junction to Ambient	$\theta_{JA}$	2 Layer PCB, 0 ft/s Airflow	-	48.5	-	°C/W
Thermal Resistance: Junction to Case	$\theta_{JC}$	2 Layer PCB, 0 ft/s Airflow	-	16.4	-	°C/W

## 15. Mechanical Information



See the Mechanical Dimensions notes on the next page.

## 15.1. Mechanical Dimensions Notes

Symbol	Dimensions in inches			Dimensions in mm		
	Min	Typical	Max	Min	Typical	Max
<b>A</b>	-	-	0.134	-	-	3.40
<b>A1</b>	0.004	0.010	0.036	0.10	<b>0.25</b>	0.91
<b>A2</b>	0.102	0.112	0.122	2.60	<b>2.85</b>	3.10
<b>b</b>	0.005	0.009	0.013	0.12	<b>0.22</b>	0.32
<b>c</b>	0.002	0.006	0.010	0.05	<b>0.15</b>	0.25
<b>D</b>	0.541	0.551	0.561	13.75	<b>14.00</b>	14.25
<b>E</b>	0.778	0.787	0.797	19.75	<b>20.00</b>	20.25
<b>e</b>	0.010	0.020	0.030	0.25	<b>0.5</b>	0.75
<b>HD</b>	0.665	0.677	0.689	16.90	<b>17.20</b>	17.50
<b>HE</b>	0.902	0.913	0.925	22.90	<b>23.20</b>	23.50
<b>L</b>	0.027	0.035	0.043	0.68	<b>0.88</b>	1.08
<b>L1</b>	0.053	0.063	0.073	1.35	<b>1.60</b>	1.85
<b>y</b>	-	-	0.004	-	-	0.10
<b>θ</b>	0°	-	12°	0°	-	12°

Notes:

1. Dimensions D & E do not include interlead flash.
2. Dimension b does not include dambar protrusion/intrusion.
3. Controlling dimension: Millimeter
4. General appearance spec. Should be based on final visual inspection.

TITLE:			
-CU L/F, PQFP FOOTPRINT 3.2 mm			
LEADFRAME MATERIAL:			
APPROVE		DOC. NO.	
		VERSION	1.2
		PAGE	
CHECK		DWG NO.	Q128 - 1
		DATE	
REALTEK SEMICONDUCTOR CORP.			

## 16. Ordering Information

**Table 97. Ordering Information**

Part Number	Package	Status
RTL8316C-GR	PQFP-128 with 'Green' Package	Production

Note: See page 5 for package identification.

**Realtek Semiconductor Corp.**

**Headquarters**

No. 2, Innovation Road II

Hsinchu Science Park, Hsinchu 300, Taiwan

Tel.: +886-3-578-0211. Fax: +886-3-577-6047

www.realtek.com.tw