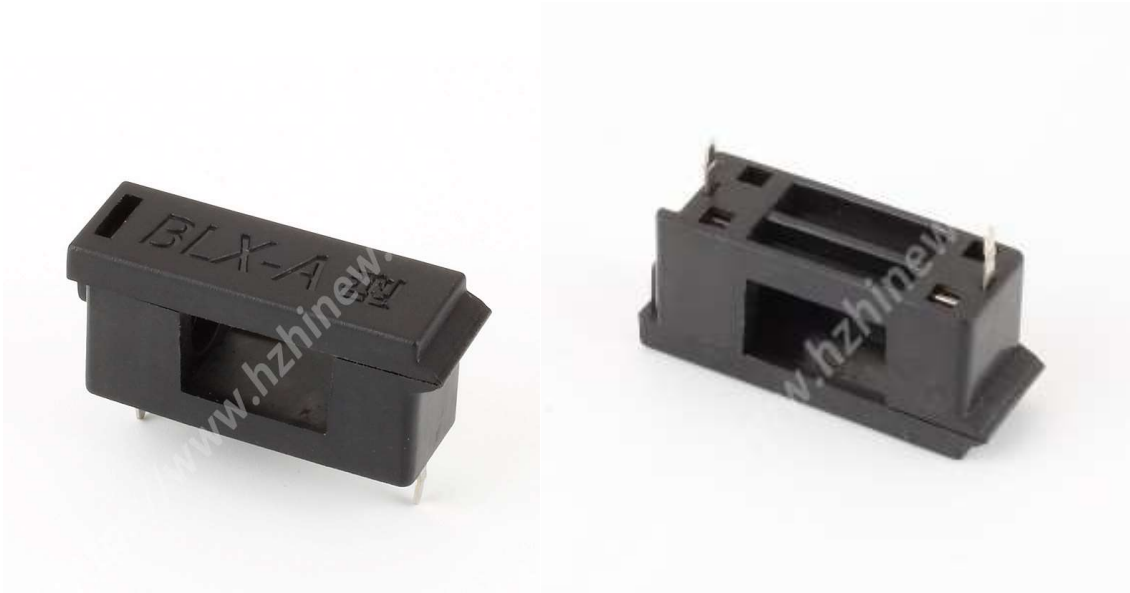


BLX-A 5x20mm Fuse Holder



BLX-A 5x20mm Fuse Holder - PCB mount

20mm pcb fuse holder, 6.3A ,250V

Specifications

Electrical Characteristics Value

Type	pcb fuse holder
Rated Current	6.3A
Rated Voltage:	250V
Fuse Size:	5x20mm
Material	Nylon
Colour	Black

