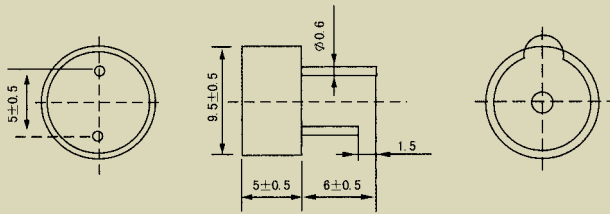
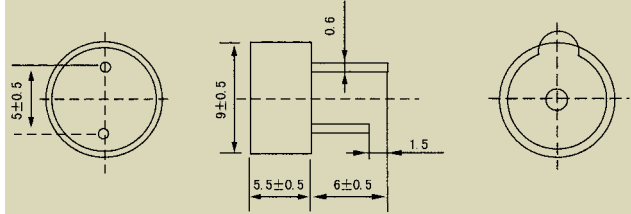




TMB9.5A



TMB09A

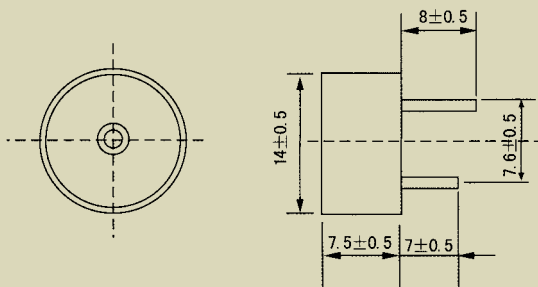


Type	TMB9.5A		
Rated Voltage(V)	3	5	12
Voltage Range(V)	2.5-4	4~7	8~15
Rated Current(mA)	≤35	≤30	≤30
Sound Output(dB)	≥80	≥83	≥85
Resonant Freq(Hz)	2600 ± 300	2600 ± 300	2600 ± 300
Operating Temp(°C)	-20~+60	-20~+60	-20~+60
Storage Temp(°C)	-20~+70	-20~+70	-20~+70
Weight(g)	1	1	1

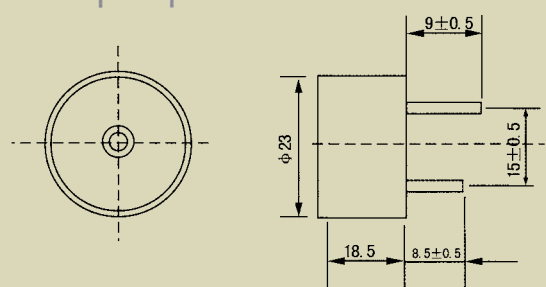
Type	TMB09A		
Rated Voltage(V)	3	5	12
Voltage Range(V)	2.5-4	4~7	8~15
Rated Current(mA)	≤35	≤30	≤30
Sound Output(dB)	≥80	≥83	≥85
Resonant Freq(Hz)	2600 ± 300	2600 ± 300	2600 ± 300
Operating Temp(°C)	-20~+60	-20~+60	-20~+60
Storage Temp(°C)	-20~+70	-20~+70	-20~+70
Weight(g)	1	1	1



SFM-14-I



SFM-20-A



Type	SFM-14-I
Rated Voltage(V)	12
Voltage Range(V)	3-24
Rated Current(mA)	≤10
Sound Output(dB)	≥80
Resonant Freq(Hz)	4500 ± 500
Operating Temp(°C)	-20~+60
Storage Temp(°C)	-30~+70
Weight(g)	2

Type	SFM-20-A
Rated Voltage(V)	12
Voltage Range(V)	3-24
Rated Current(mA)	≤20
Sound Output(dB)	≥90
Resonant Freq(Hz)	3000 ± 500
Operating Temp(°C)	-20~+45
Storage Temp(°C)	-20~+60
Weight(g)	5.5