

EMI/EMC FILTER

HP1 SERIES



FEATURES

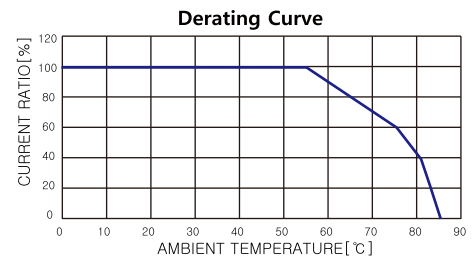
- Miniature general purpose PCB mounting type.
- Require small space of PCB.
- Low cost from unique structure.
- Designed for two wire cord systems.
- For three wire cord systems, Y capacitors can be attached externally.

APPLICATIONS

- Personal computers and peripherals.
- Digital equipments.
- Measuring instruments and medical instruments.
- For use in miniature equipments.
- For TV, VCR, monitors and display units.
- For home appliances.

SPECIFICATIONS

Model	Rated Voltage (AC,DC)	Rated Current	Operating Temperature
HP1-P10	250V	1A	-25°C to + 85°C Including temperature rise
HP1-P10-21(22/31)			
HP1-P16	250V	1.6A	
HP1-P16-21(22/31)			
HP1-P25	250V	2.5A	
HP1-P25-21(22/31)			
HP1-P36	250V	3.6A	
HP1-P36-21(22/31)			

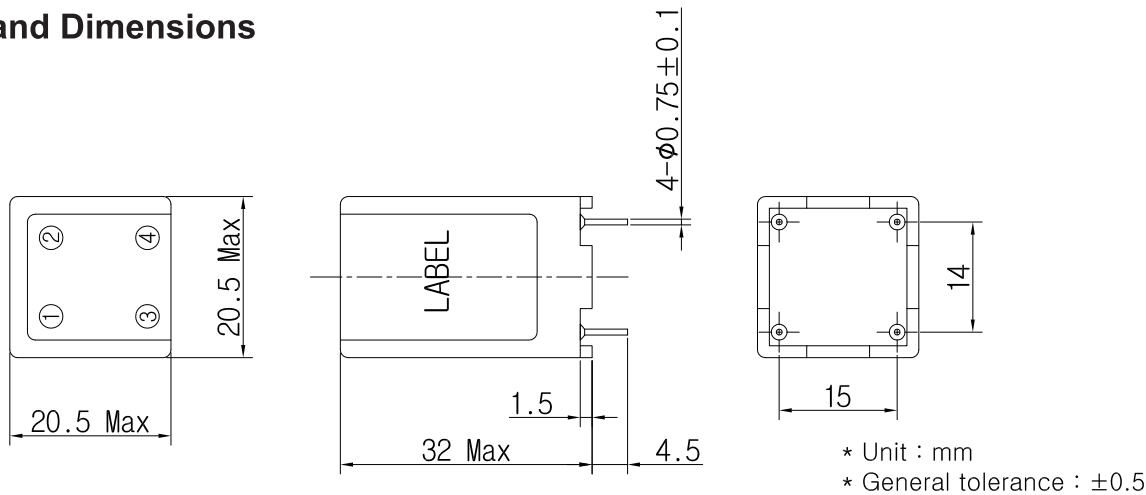


Note : Test Voltage : 1500V AC one minute, line to earth.
 Insulation Resistance : 300 Mohm min. at 500V DC.
 Voltage Drop : 1V max. at rated current.
 Weight : 17.5g

Model Number Construction

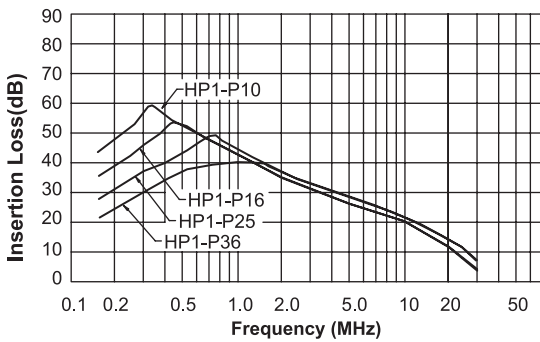
HP I	P	10	2	1
Series Description	Input/Output Terminal Style P : PCB Pin	Current Rating : AC rms 10 : 1amp 16 : 1.6amp 25 : 2.5amp 36 : 3.6amp	Line-Line Cap. Value(CX1) None or 1 : 0.1 μ F 2 : 0.22 μ F 3 : 0.33 μ F	Line-Line Cap. Value(CX2) None or 1 : 0.1 μ F 2 : 0.22 μ F

Shapes and Dimensions

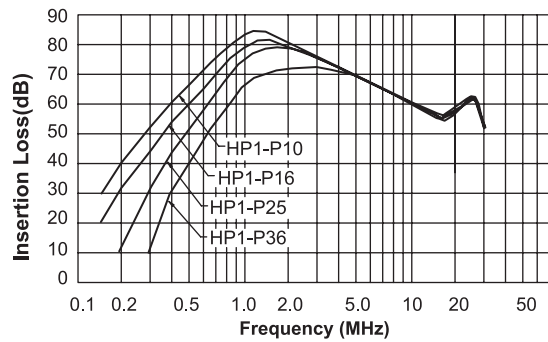


Attenuation Characteristics

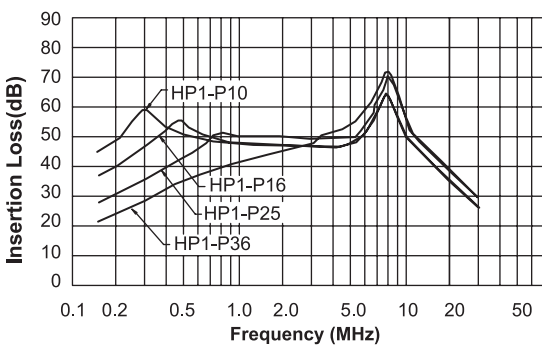
● Common Mode (Test Circuit 2)



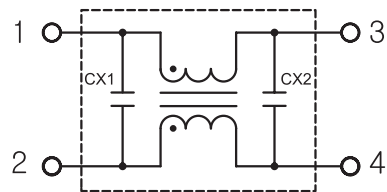
● Differential Mode (Test Circuit 3)



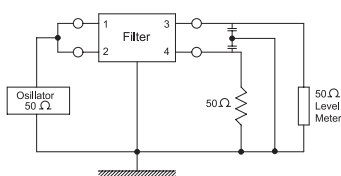
● Common Mode (Test Circuit 1)



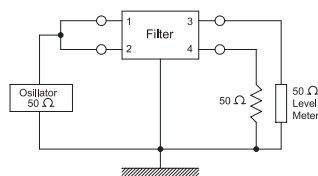
● Circuit Diagram



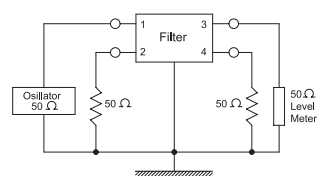
● Measurement configuration



Common Mode with Y-cap.
(Test circuit1)



Common Mode
(Test circuit2)



Differential Mode
(Test circuit3)