



**Bidirectional Current Sens module 120 kHz Bandwidth DC: -100-100A 0.02V/1A
AC/DC ACS758LCB-100B Panel Mount +/-100Amp Current Sensor Board Detection Module**

Product Description

Part No : ACS758LCB-100B Current Sensor module

Primary Sampled Current I_a : -100A-100A

Sensitivity K :0.02V/A

Supply VCC:3V or 5.5V;

Signals Formula :

$OU1=OU2=VCC/2+I_a*K=2.5\pm 0.02*I_a$ (if VCC=5V);

(Primary sampled current I_a should be within the range specified);

Pls check the picture below

ALLEGRO current sensor ACS758LCB-100B DC / AC detection module current range DC 0-100A; AC -100A-100A The electrical parameters of the module are as follows: Operating voltage VCC: 3.3V-5.5V; ACS758LCB-100B Linearity K: 20mV / A 1A current = 20mV voltage change; detectable current (AC or DC) range I_a : 100A ~ 100A; output voltage formula: $OU1 = OU2 = VCC / 2 + I_a * K = VCC / 2 + (0.02V * I_a)$ As shown in the case of the current flowing through the conductor, we show the output voltage as follows: how much current flows from the IP +, IP-out current value of 1A according to the formula output voltage $OU1 = OU2 = VCC / 2 + I_a * K = VCC / 2 + (0.02V / 1A * 1A) = 2.5 + 0.02 = 2.52V$; we show the output voltage as the example of the current flowing through the 1A AC current. The AC does not distinguish the current from the current. The output voltage range is: 2.48V --- 2.52V where $OU2$ is the output voltage of the $OU1 = OU2 = VCC / 2 + I_a * K = VCC / 2 + (0.02V * I_a) = 2.5 +$ Follow the buffer output, you can with the microcontroller A / D channel impedance better match, directly connected to the microcontroller AD port can; Operating temperature: 40 ~ 125 ° C Applications: power equipment, current detection auxiliary module, easy wiring, to help you project Development is progressing smoothly, note that the high current must be soldered directly to the two round holes in the board.

Bidirectional Current ACS758LCB-100B

120 kHz Bandwidth AC/DC: -100A-100A 0.02V/1A

Signals Formula:

$$OU1=OU2=VCC/2 \pm I_a * K = 2.5 \pm 0.02 * I_a;$$

VCC:5V

Primary Sampled Current I_a : (-100A-100A)

K: 0.02V/A;

Yuan Hang IC Store

Four color line electric:

Red line: VCC 3-5.5V

Black line: GND

Yellow line OU1: $OU1=VCC/2+0.02*I_a$

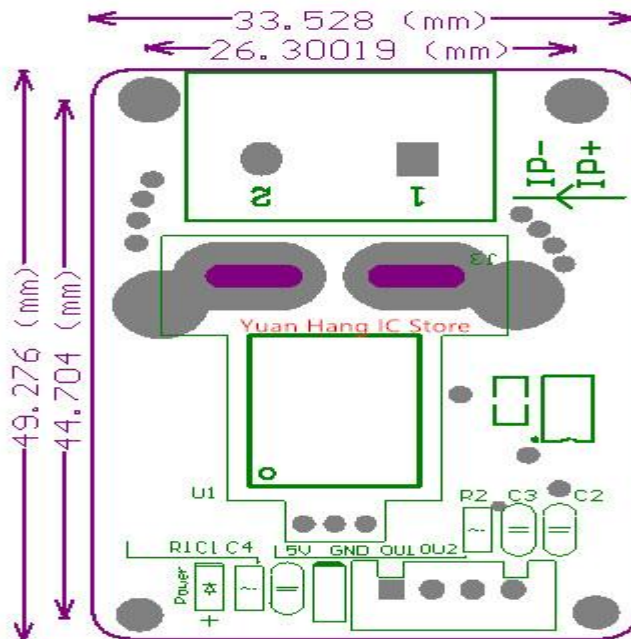
White line OU2: $OU2=OU1$ the follower of OU1

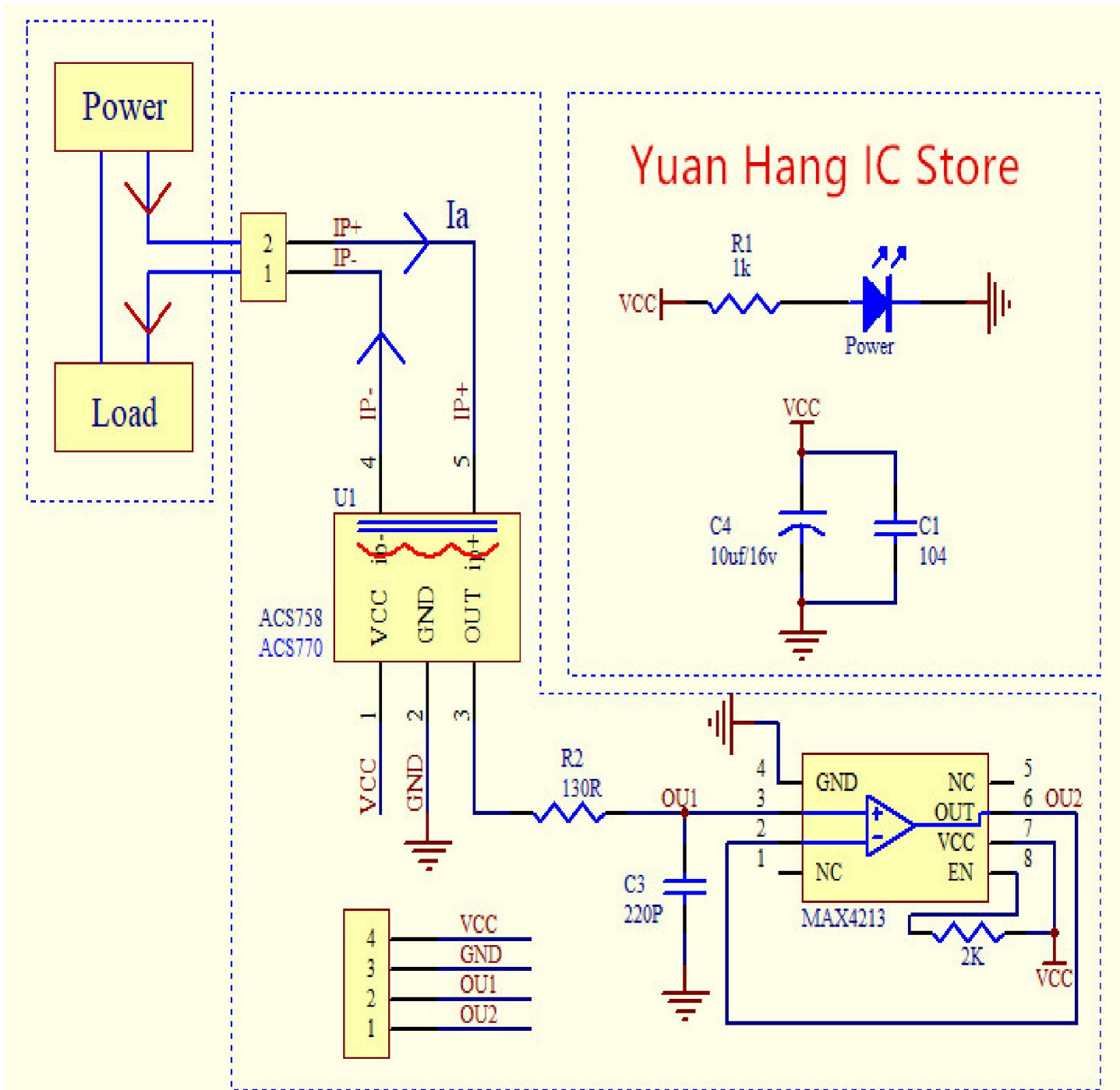
Power
+
-

I_a
Primary Sampled Current

Load

www.aliexpress.com/store/1817748





Packaging Details

- Unit Type: piece
- Package Weight: 0.05kg (0.11lb.)
- Package Size: 11cm x 10cm x 3cm (4.33in x 3.94in x 1.18in)

