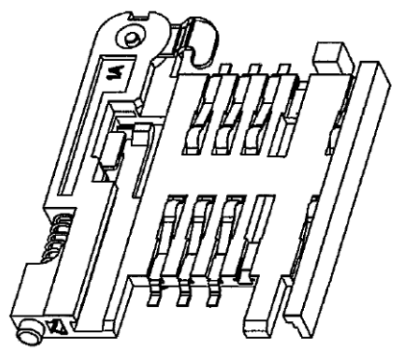
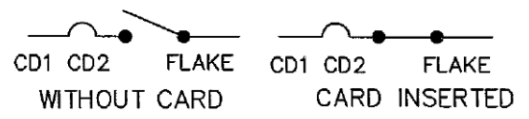


TECHNICAL CHARACTERISTICS

- 1.General Characteristics
 Dimensions:33.20Lx25.00Wx3.00H mm
 Weight:Approx 1.60±0.2g
 Durability:5000 cycles min.
- 2.Electrical Characteristics
 contact resistance:50m typical,100mΩ max
 insulation resistance:>1000MΩ/500V DC
- 3.Solderability
 IR reflow: 260°C,10sec.Max
 Manual soldering :370°C,3sec.Max
- 4.Environmental Characteristics
 Operating temperature:-40°C~+85°C
 Operating humidity :10%~+95%RH



ELECTRIC FUNCTION	DETECT SWITCH
WITHOUT CARD	OPEN
CARD INSERTED	CLOSED



SWITCH OPERATION DIAGRAM

Recommend

RoHS Compliant

TOLERANCES ARE

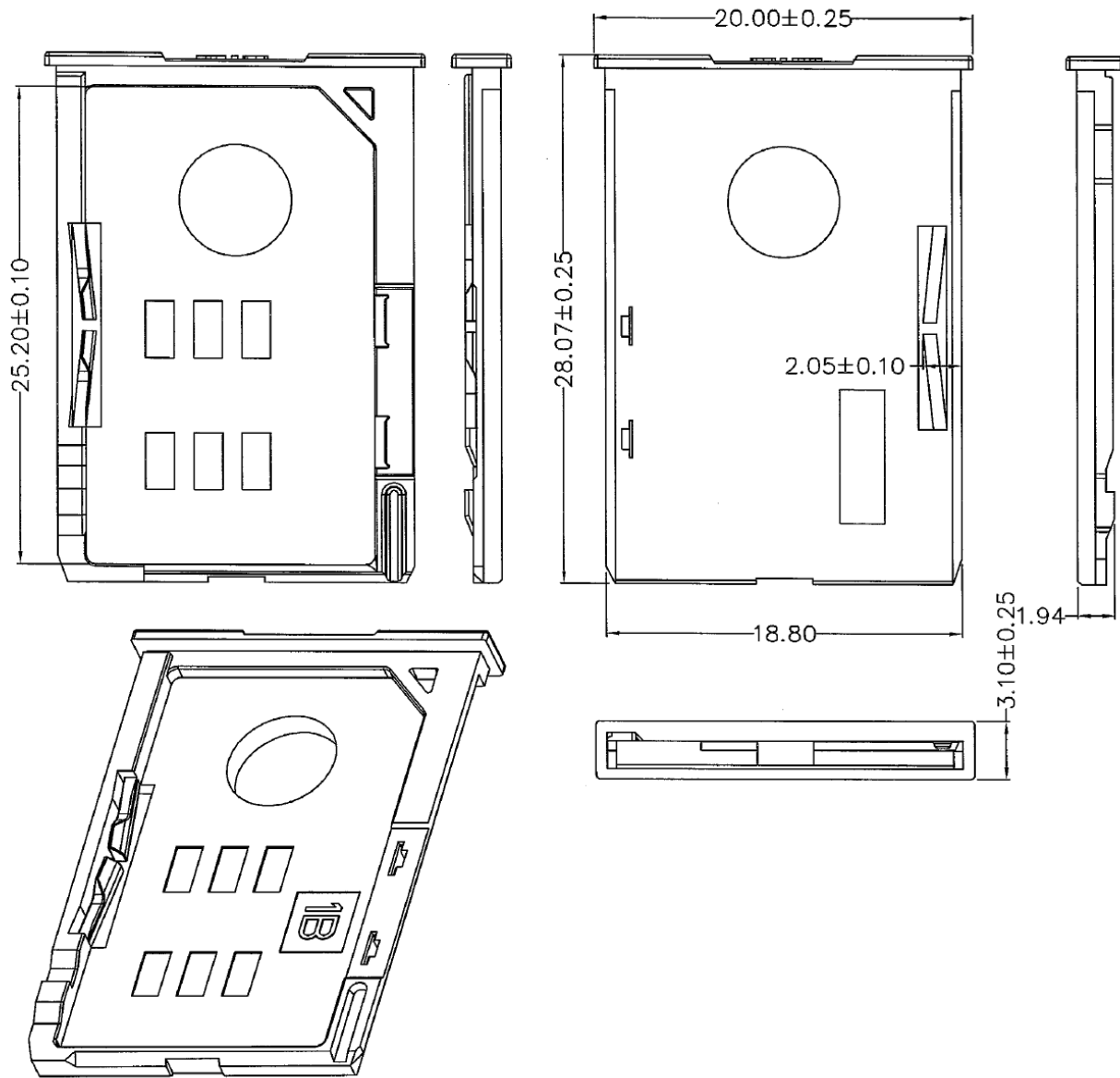
DRAWING BY CY	X, ±
CHECKED BY GENIUS	.X ±
UNIT / mm	.XX ±
SCALE 1 : 1	.XXX ±
DATE	ANG ±
SIZE A4	P PROJECTION



ORDER INFORMATION

SCE-W2231-06-LF
 SERIES | LEADFREE
 06 WAY
 HIGH 3.1mm
 PAD TO PAD 22.40mm
 90°SMT

DESCRIPTION:



TECHNICAL CHARACTERISTICS

1.General Characteristics

Dimensions: $28.07 \times 20.00 \times 3.10$ mm

Weight: Approx 0.66 ± 0.20 g

2.Electrical Characteristics

contact resistance: $50 \text{ m}\Omega$ typical, $100 \text{ m}\Omega$ max

insulation resistance: $> 1000 \text{ M}\Omega / 500 \text{ V DC}$

3.Environmental Characteristics

Operating temperature: $-40^\circ\text{C} \sim +85^\circ\text{C}$

Operating humidity : $10\% \sim 95\% \text{ RH}$

Recommend

RoHS Compliant

TOLERANCES ARE

DRAWING BY CY	
CHECKED BY GENIUS	
UNIT / mm	SCALE 1 : 1
DATE	
SIZE A4	P PROJECTION

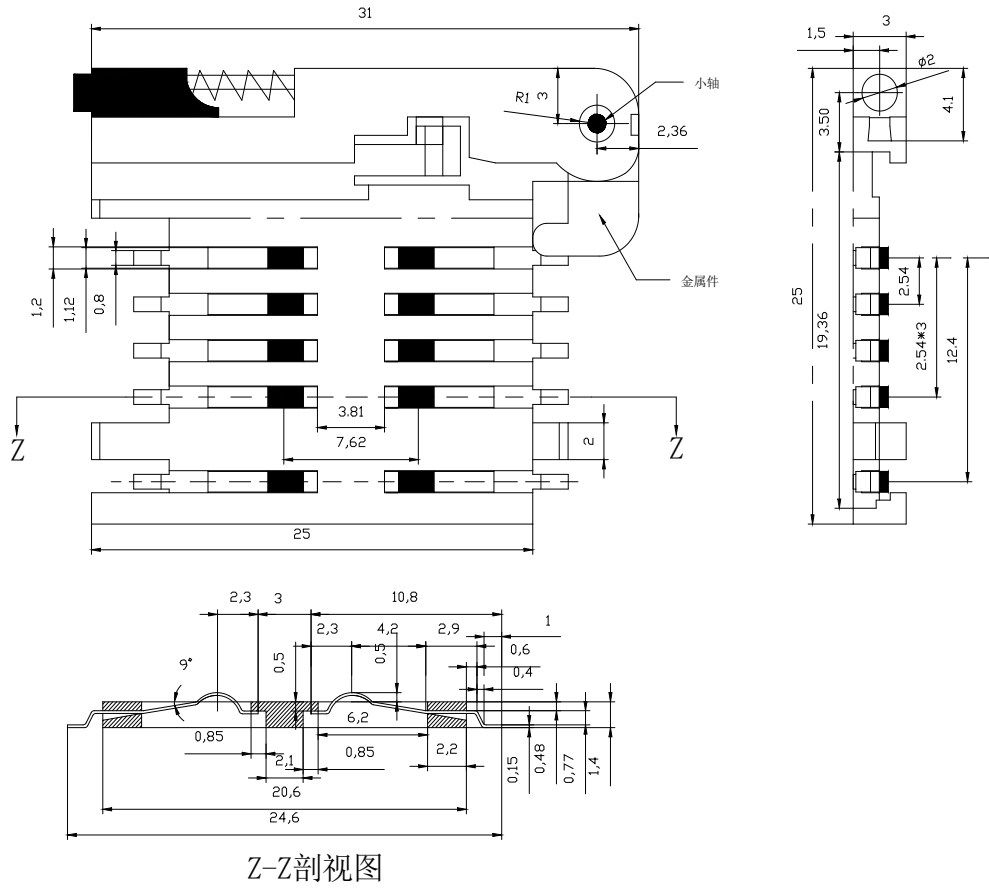
X. ±
.X ±
.XX ±
.XXX ±
ANG ±

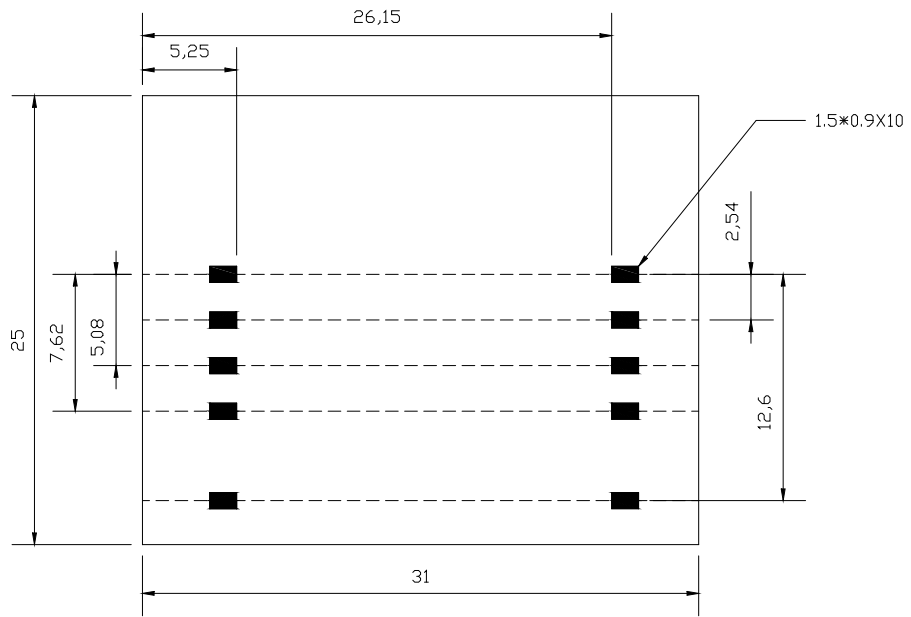
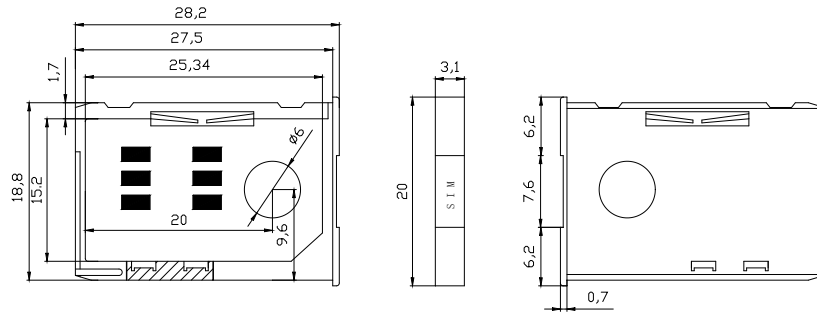
照片框

ORDER INFORMATION

SCE-W2231-06-LF
 SERIES | | LEADFREE
 | | 06 WAY
 | | HIGH 3.1mm
 | | PAD TO PAD 22.40mm
 | | 90° SMT

DESCRIPTION:





RECOMMENDED PCB LAYOUT