



TAI-SAW TECHNOLOGY CO., LTD.

No. 3, Industrial 2nd Rd., Ping-Chen Industrial District,
Taoyuan, 324, Taiwan, R.O.C.

TEL: 886-3-4690038 FAX: 886-3-4697532

E-mail: tstsales@mail.taisaw.com Web: www.taisaw.com

Approval Sheet For Product Specification

Issued Date:

Product Name: SAW FILTER 1575.42 MHz SMD 3.0 SQ For GPS

TST Parts No.: TA1575IG

Customer Parts No.: _____

Company: _____
Division: _____
Approved by : _____
Date: _____

Checked by: Bob Chau

Approval by: Francis Chen

Date: Sep. 28. 2006



TAI-SAW TECHNOLOGY CO., LTD.

No. 3, Industrial 2nd Rd., Ping-Chen Industrial District,
Taoyuan, 324, Taiwan, R.O.C.

TEL : 886-3-4690038

FAX : 886-3-4697532

http://www.taisaw.com

E-mail : tstsales@mail1.taisaw.com

SAW Filter 1575.42 MHz for GPS ~ Low Loss ~

MODEL NO.: TA1575IG

REV. NO.:4

A. MAXIMUM RATING:

RoHS Compliant
Lead free
Lead-free soldering

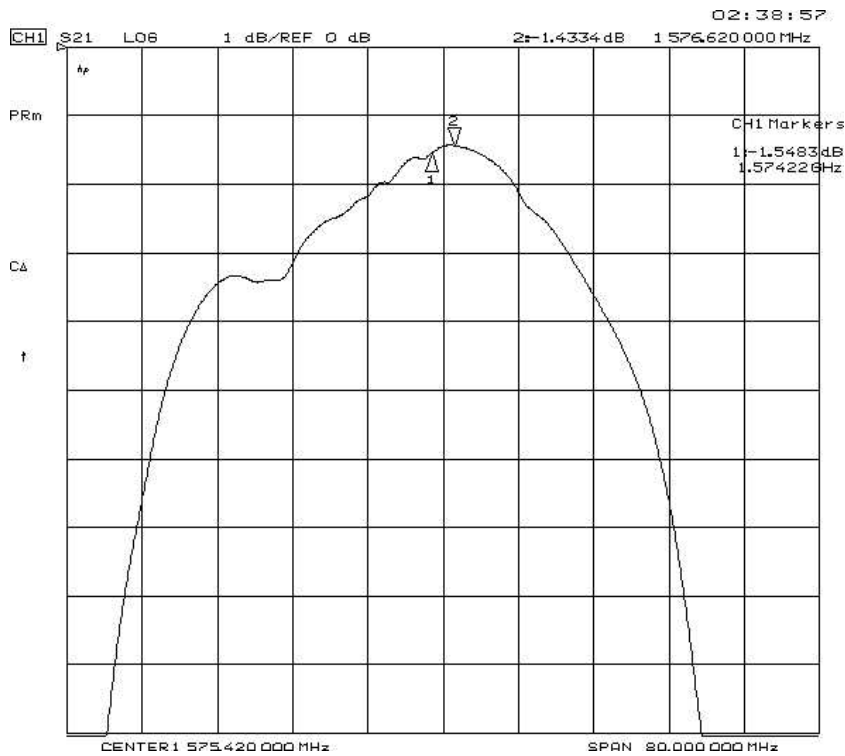
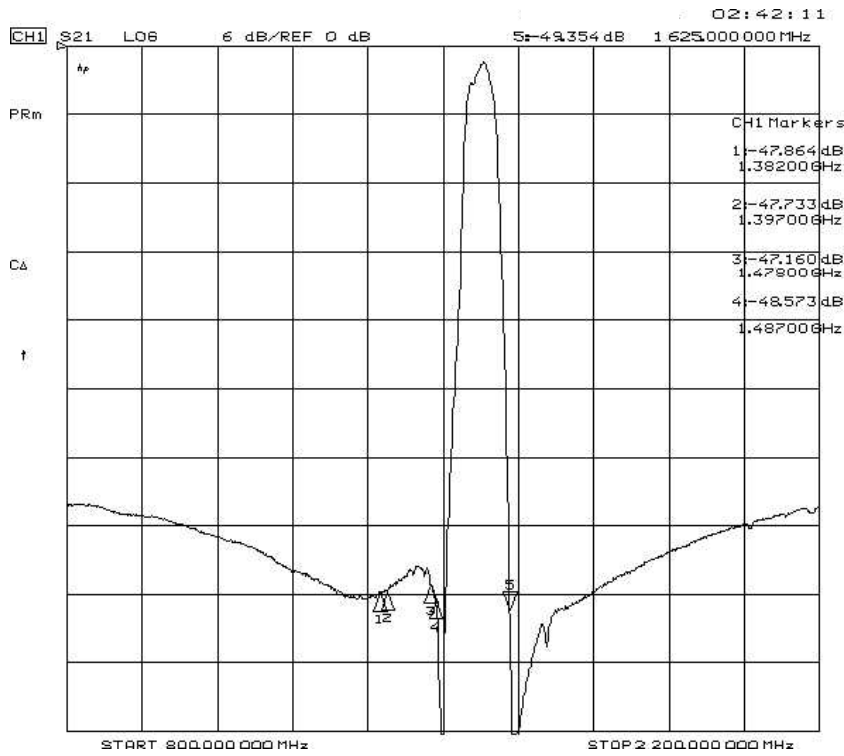
1. Input Power Level: 10 dB_m
2. DC voltage: 0 V
3. Operating Temperature: -40°C to +85°C
4. Storage Temperature: -50°C to +100°C

B. ELECTRICAL CHARACTERISTICS:

Item		Min.	Typ.	Max.
Center frequency	Fc (dB)	-	1575.42	-
Insertion loss	1574.22 ~1576.62 MHz IL (dB)	-	1.5	2.0
Amplitude ripple (p-p)	1574.22 ~ 1576.62 MHz (dB)	-	0.15	1.0
Attenuation (Reference level from 0 dB)				
DC ~ 1382	MHz (dB)	37	40	-
1382 ~ 1397	MHz (IF Image frequency) (dB)	40	47	-
1397 ~ 1478	MHz (dB)	40	45	-
1478 ~ 1487	MHz (Local frequency) (dB)	40	47	-
1487 ~ 1500	MHz (dB)	30	52	-
1625 ~ 1640	MHz (dB)	30	49	-
1640 ~ 2000	MHz (dB)	38	42	-
2000 ~ 3000	MHz (dB)	33	38.5	-
VSWR within 1574.22 ~1576.62 MHz		-	1.1	2.0
Source impedance	Z _s (Ω)	-	50	-
Load impedance	Z _L (Ω)	-	50	-

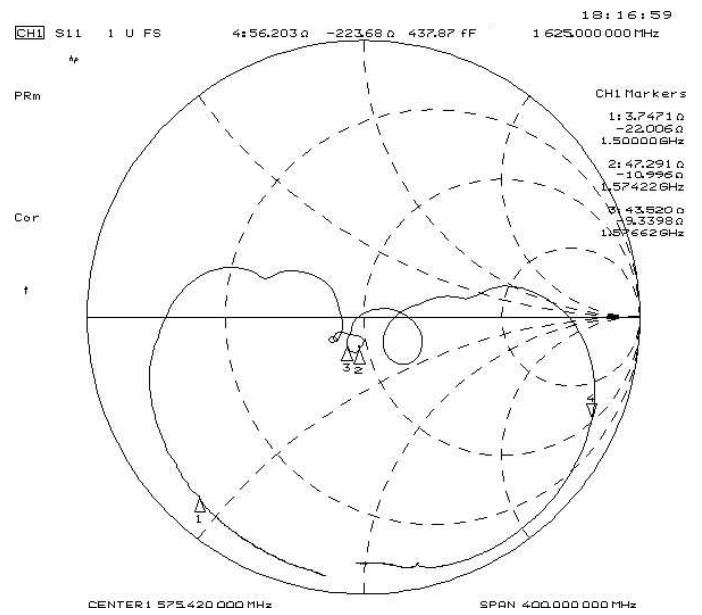
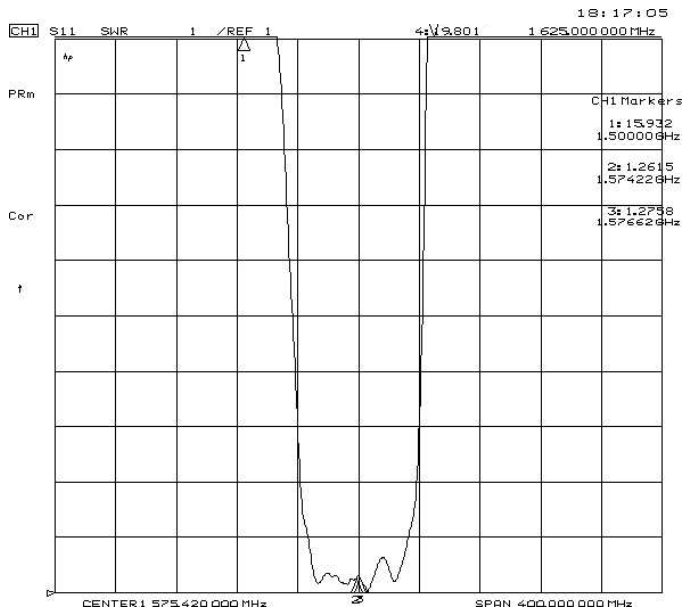
Note1. No matching network required for operation at 50 Ω

C. Frequency Characteristics :

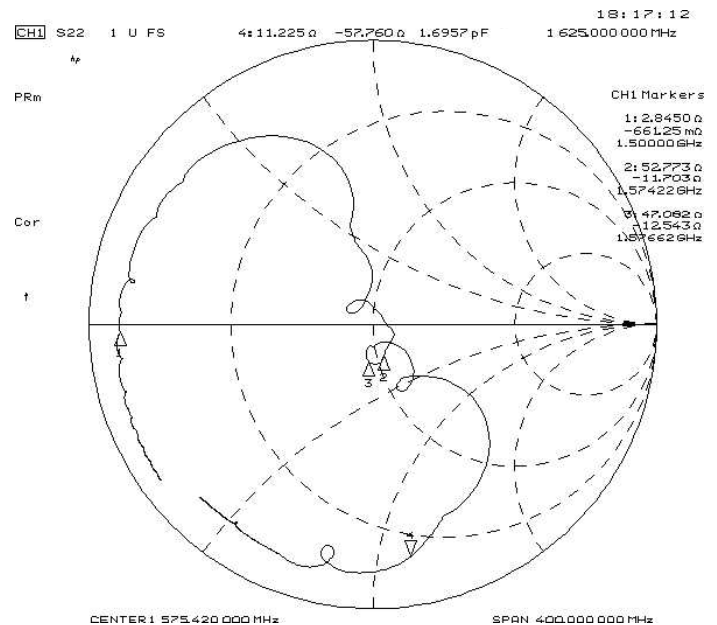
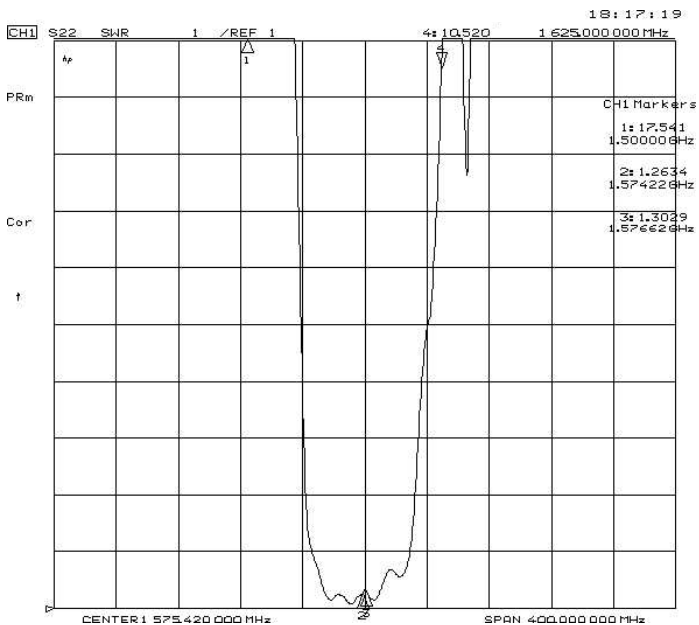


D. Reflections Functions :

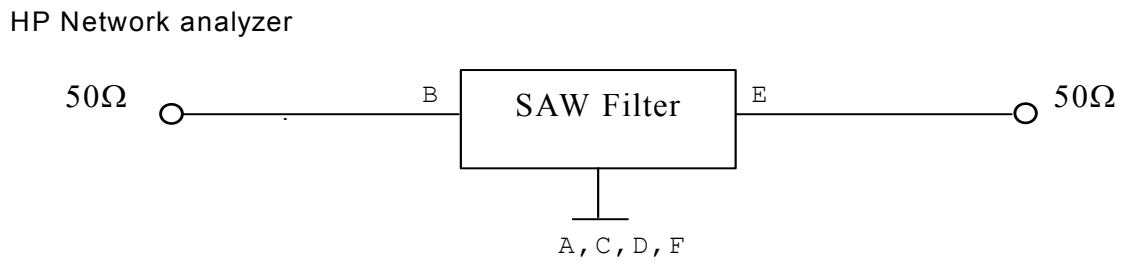
S11 VSWR



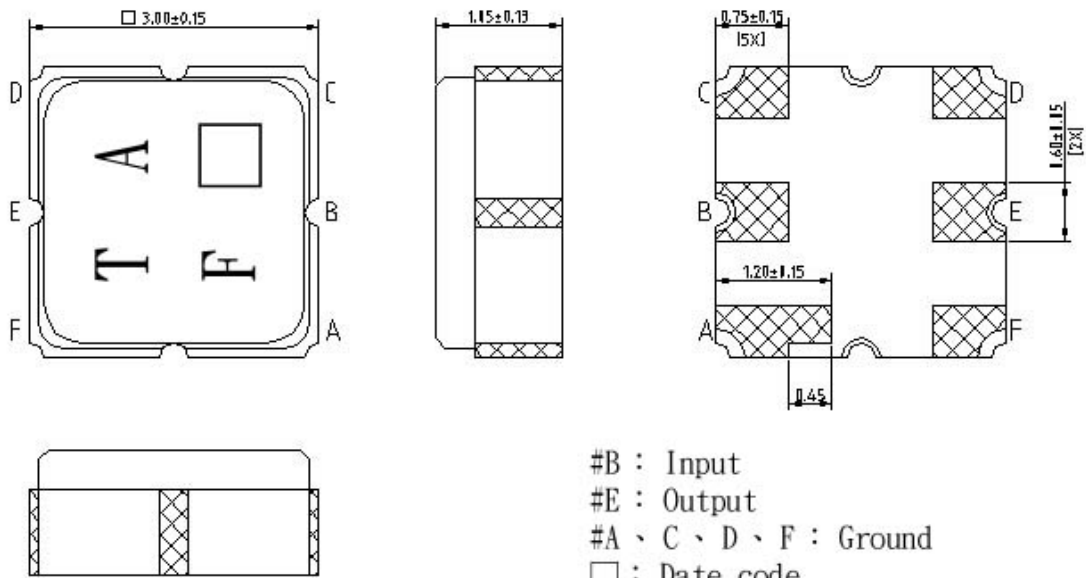
S22 VSWR



E. MEASUREMENT CIRCUIT:



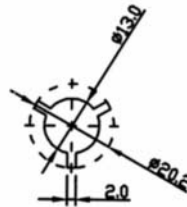
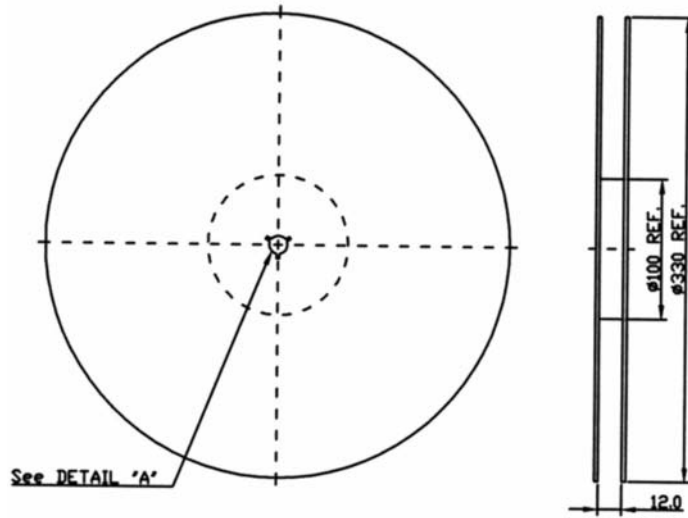
F. OUTLINE DRAWING:



#B : Input
 #E : Output
 #A、C、D、F : Ground
 □ : Date code
 Unit : mm

G. PACKING:

1. REEL DIMENSION



2. TAPE DIMENSION

