

SPECIFICATIONS

CONTACT RATING: 1A @125 VAC or 28 VDC
 ELECTRICAL LIFE:50,000 make-and-break cycles at full load
 CONTACT RESISTANCE: 20 mΩ max. initial @2-4 VDC,100 mA
 INSULATION RESISTANCE: 1,000 MΩ min.
 DIELECTRIC STRENGTH: 1,000 V RMS @ sea level.
 OPERATING TEMPERATURE: -30°C to +85°C

MATERIALS

CASE - diallyl phthalate (DAP)
 PLUNGER - Glass filled nylon or glass filled polyester (UL94V-0)
 BUSHING - Copper alloy , nickel plated
 HOUSING - Stainless Steel
 CONTACT AND TERMINAL - Copper alloy, silver plated

How do you build the switches you need!!

The straight type, please see the (A);

The right angle P.C terminals, please see the (B)

(A) P 8 7 0 1 - C V 1 - 2 - C R - E - S 2 0 - -

Switches Function	
P8701	SPDT on-mom
P8702	DPDT on-mom

Cap or Actuator	
none	(none)
CV	5.08
CV1	7.70
CV2	9.53
CV4	dress nut
CV6	9.80
F22A	With frame
F32A	With frame and LED

Cap color	
1	white
2	black
3	red
4	orange
5	yellow
6	green
7	blue
9	gray

Bushing		
F	thd /key-way	7.37
N	non-thd /key-way	7.37
F4	thd /key-way	6.35
N4	non-thd /key-way	6.35
E	thd /key-way	8.89
E4	thd/key-way	7.87
F8	thd /flat	7.37
N8	non-thd /flat	7.37
F9	thd /flat	6.35
N9	non-thd /flat	6.35

Epoxy seal	
E	epoxy seal

Vertical support Bracket	
(none)	
S20	11.68
V20	snap-in 11.68

Rubber hood	
E4	for thd. bushing

RoHS code	
H	= RoHS Compliant

Termination	
B	solder lug
C	P.C 1.27width
D	Quick connect

Contact Material	
Q	silver plated
R	gold plated
G	gold over silver

(B) P 8 7 0 1 - A 4 - C V 1 - 2 - R - E - S -

Switches Function	
P8701	SPDT on-mom
P8702	DPDT on-mom

Right Angle	
A4	Horizon
A5	Vertical

Cap	
none	(none)
CV	5.08
CV1	7.70
CV2	9.53
CV6	9.80

Cap color	
1	white
2	black
3	red
4	orange
5	yellow
6	green
7	blue
9	gray

Bushing		
F	thd /key-way	7.37
N	non-thd /key-way	7.37
F4	thd /key-way	6.35
N4	non-thd /key-way	6.35
E	thd /key-way	8.89
E4	thd/key-way	7.87
F8	thd /flat	7.37
N8	non-thd /flat	7.37
F9	thd /flat	6.35
N9	non-thd /flat	6.35

Contact Material	
Q	silver plated
R	gold plated
G	gold over silver

Epoxy seal	
E	epoxy seal

Support Bracket	
(none)	std.
S	snap-in type

RoHS code	
H	= RoHS Compliant



T80-P

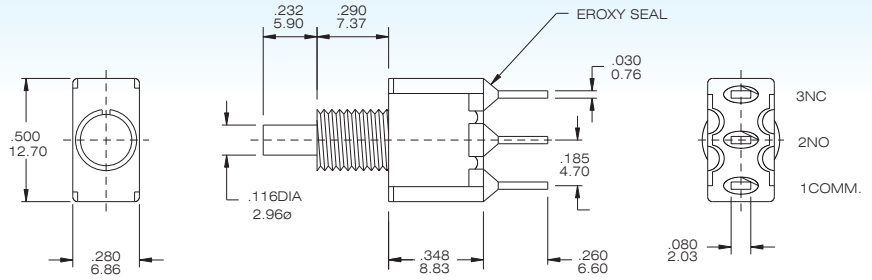
Snap Acting Momentary Pushbutton Switches



SPDT



Model No.	Switching position	
P8701	on	Mom
Term. Comm.	1-3	1-2

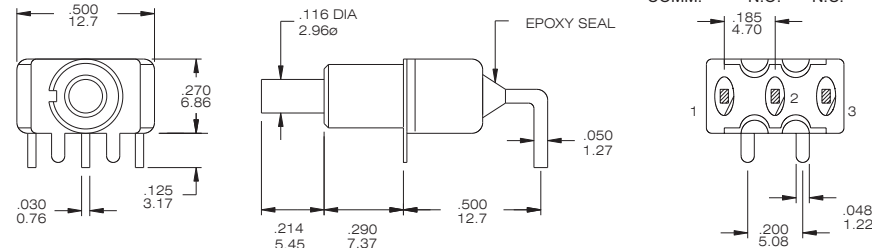
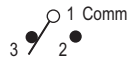


P8701-FBR-E

SPDT

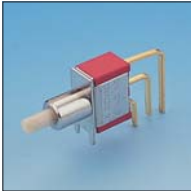


Model No.	Switching position	
P8701-A4	on	Mom
Term. Comm.	1-3	1-2

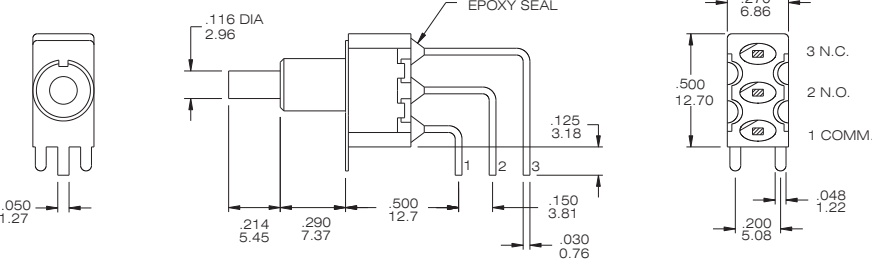
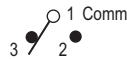


P8701-A4-NR-E

SPDT



Model No.	Switching position	
P8701-A5	on	Mom
Term. Comm.	1-3	1-2

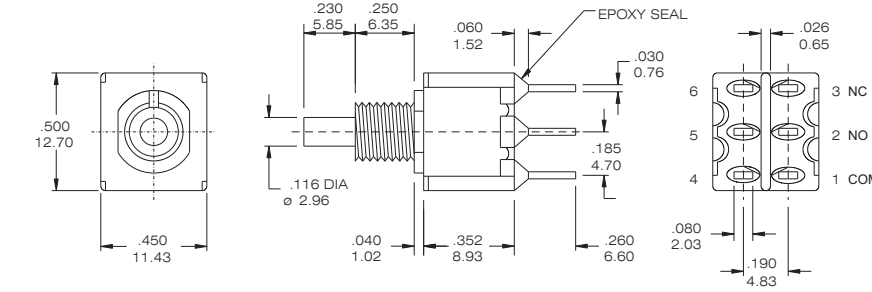


P8701-A5-NR-E

DPDT



Model No.	Switching position	
P8702	on	Mom
Term. Comm.	1-3 4-6	1-2 4-5

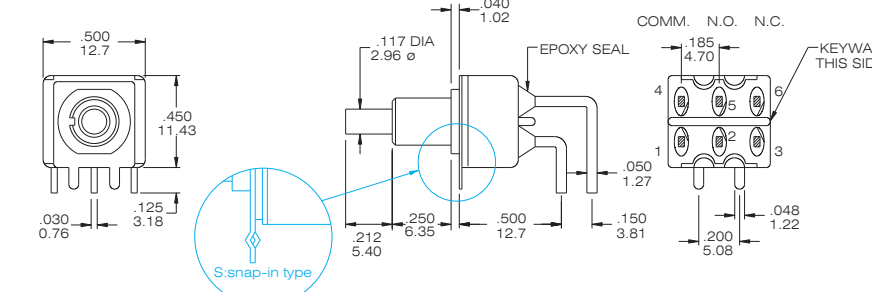
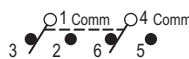


P8702-F4BR-E

DPDT



Model No.	Switching position	
P8702-A4	on	Mom
Term. Comm.	1-3 4-6	1-2 4-5

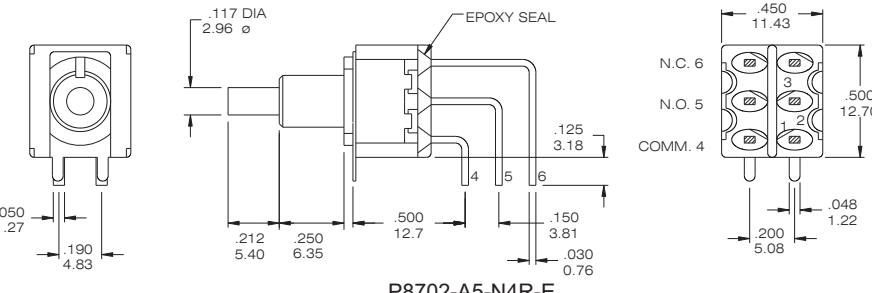
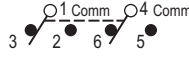


P8702-A4-N4R-E/ P8702- A4-N4R-E-S

DPDT



Model No.	Switching position	
P8702-A5	on	Mom
Term. Comm.	1-3 4-6	1-2 4-5



P8702-A5-N4R-E



T80-P

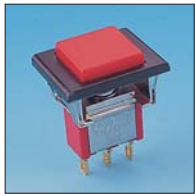
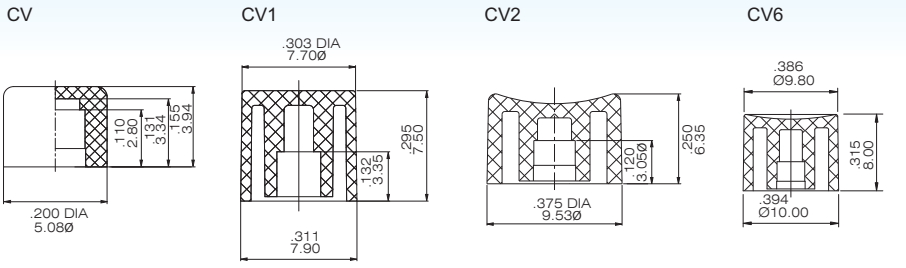
Snap Acting Momentary Pushbutton Switches



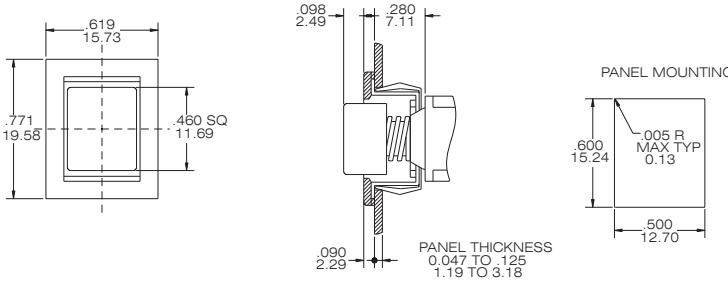
Cap and Actuator Option

Cap color Option

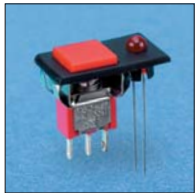
CAP & ACTUATOR OPTIONS	
1	White
2	Black(Std.)
3	Red
4	Orange
5	Yellow
6	Green
7	Blue
9	Gray



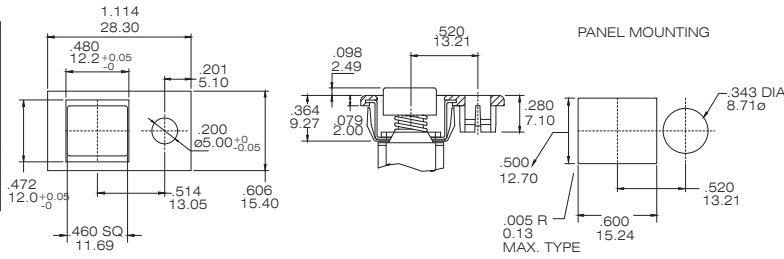
F22A



P870 * -F22A- * -BR-E



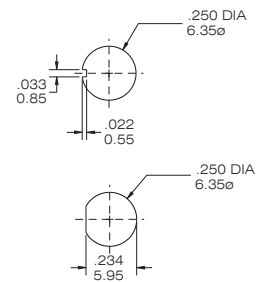
F32A



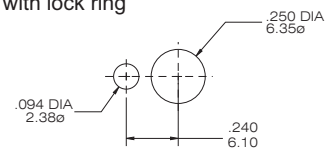
P870 * -F32A- * -BQ-E

Panel Mounting

without lock ring

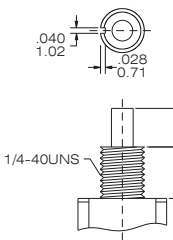


with lock ring

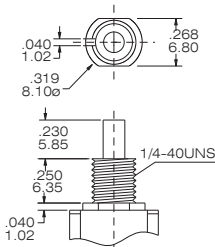


Bushing Option

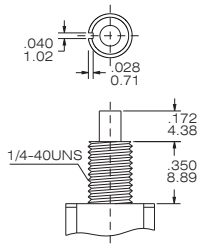
F thd.
N non-thd.
(only for SPDT)



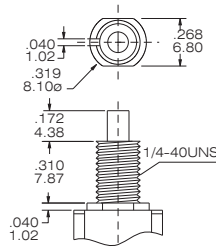
F4 thd.
N4 non-thd.



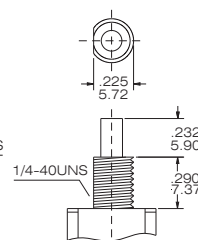
E thd.
(only for SPDT)



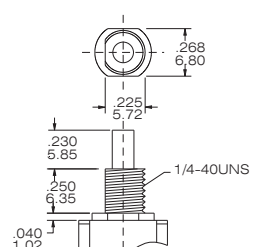
E4 thd.



F8 thd.
N8 non-thd.
(only for SPDT)



F9 thd.
N9 non-thd.

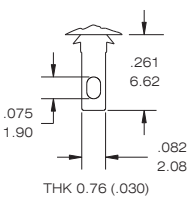


TERMINAL OPTION (ONLY FOR THE STRAGHT TYPE)

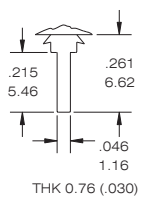
TERMINAL SEAL OPTION

RUBBER HOOD

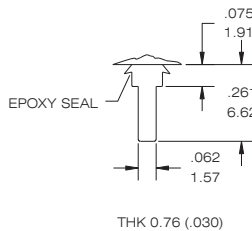
B STD



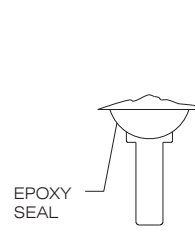
C PRINTED CIRCUIT



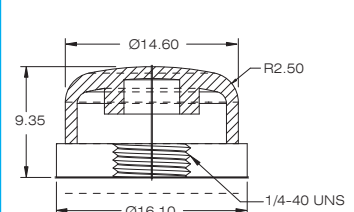
D QUICK CONNECT



E TERMINAL SEAL



E4





T80-P

Snap Acting Momentary Pushbutton Switches



CONTACT MATERIAL OPTIONS

CODE	CONTACT MATERIAL	TERMINAL MATERIAL	RATING
Q	Silver plated	Silver plated	1A @ 125V AC or 28 V DC;
R	Gold plated over nickel plated	Gold plated over nickel plated	0.4 VA MAX@ 20V AC or DC MAX
G	Gold plated over silver plated	Gold plated over silver plated	0.4 VA MAX @ 20 V AC or DC MAX or 1 A @ 125V AC or 28 V DC;

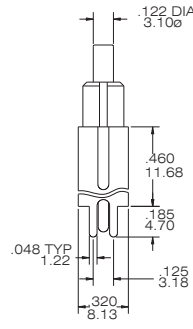
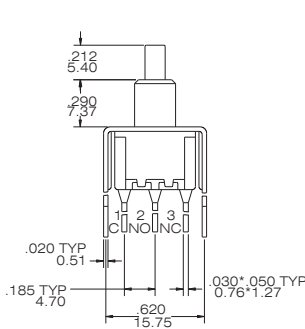
VERTICAL SUPPORT BRACKET OPTION

(only apply the straight type terminal-Please modify the terminal option is "c" code)

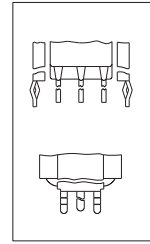
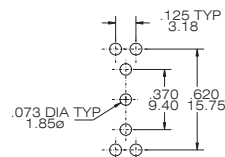
S20/V20



SPDT



P.C. MOUNTING



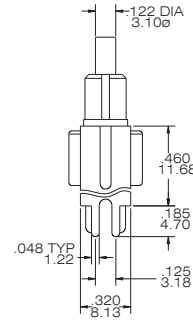
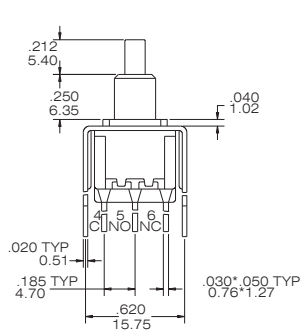
SNAP-IN V 20

P8701-NCR-E-S20

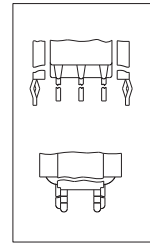
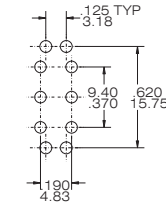
S20/V20



DPDT



P.C. MOUNTING



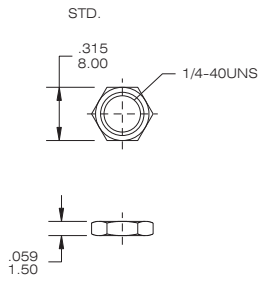
SNAP-IN V 20

P8702-N4CR-E-S20

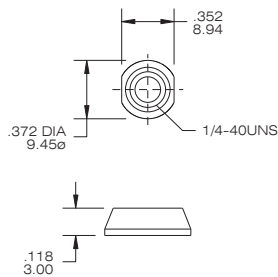
The hard ware of T80-P push button switches

The P.C.B mounting Dimension

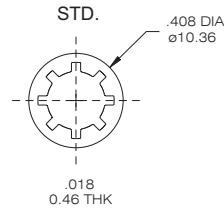
NUT



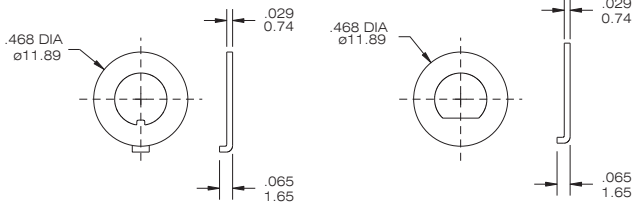
DRESS NUT



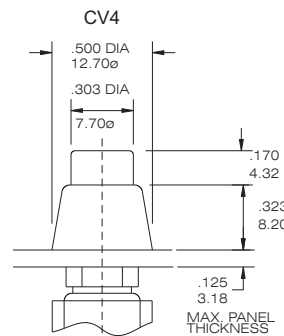
LOCK WASHER



LOCKING RING

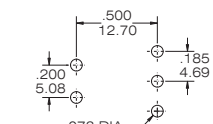


DRESS NUT & CAP

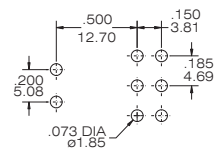


To order dress nut only.

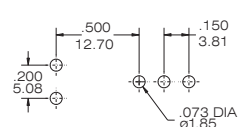
P8701-A4



P8702-A4



P8701-A5



P8702-A5

