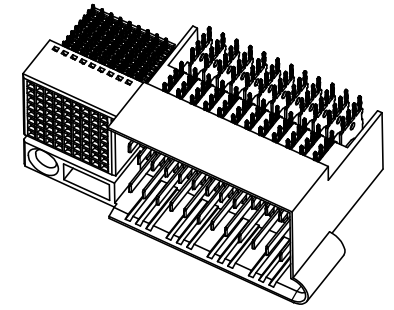
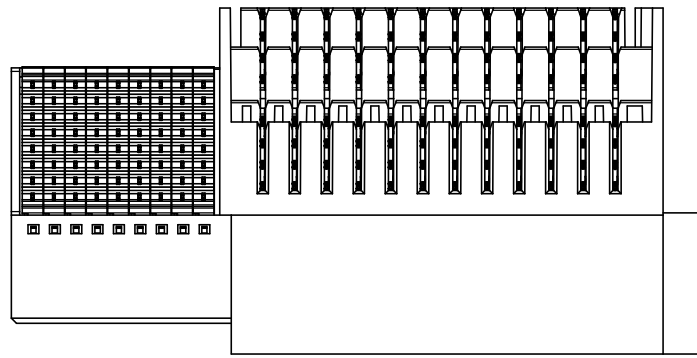
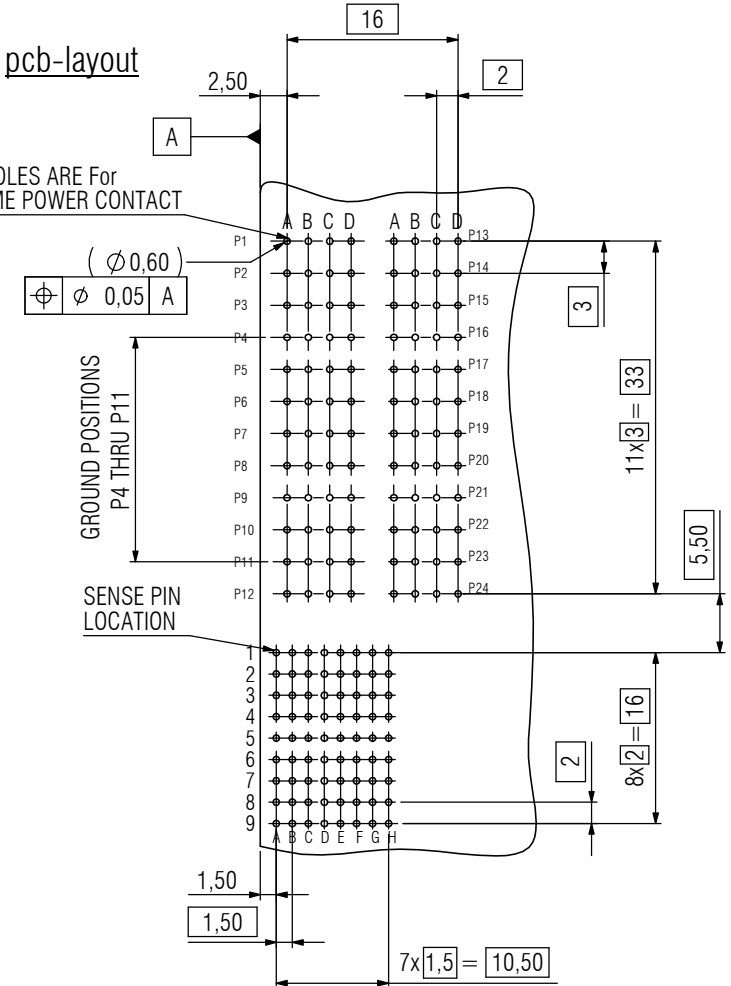
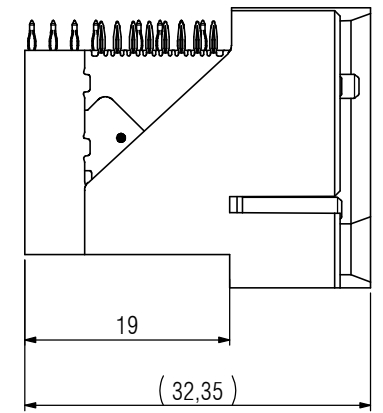
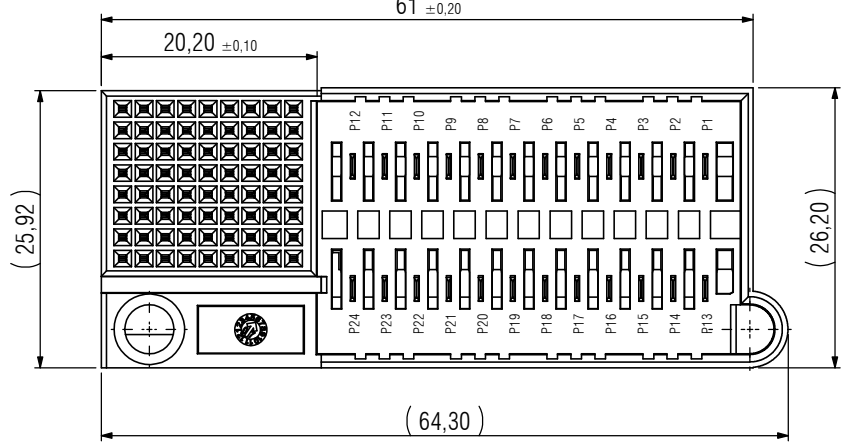
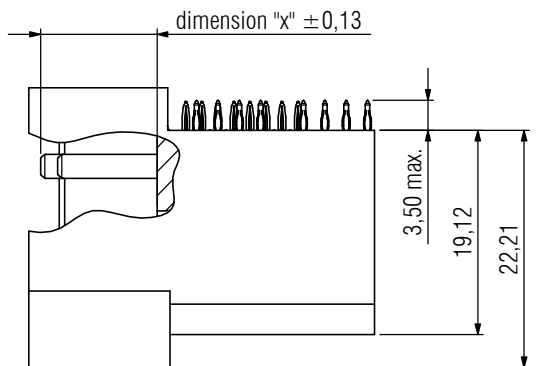
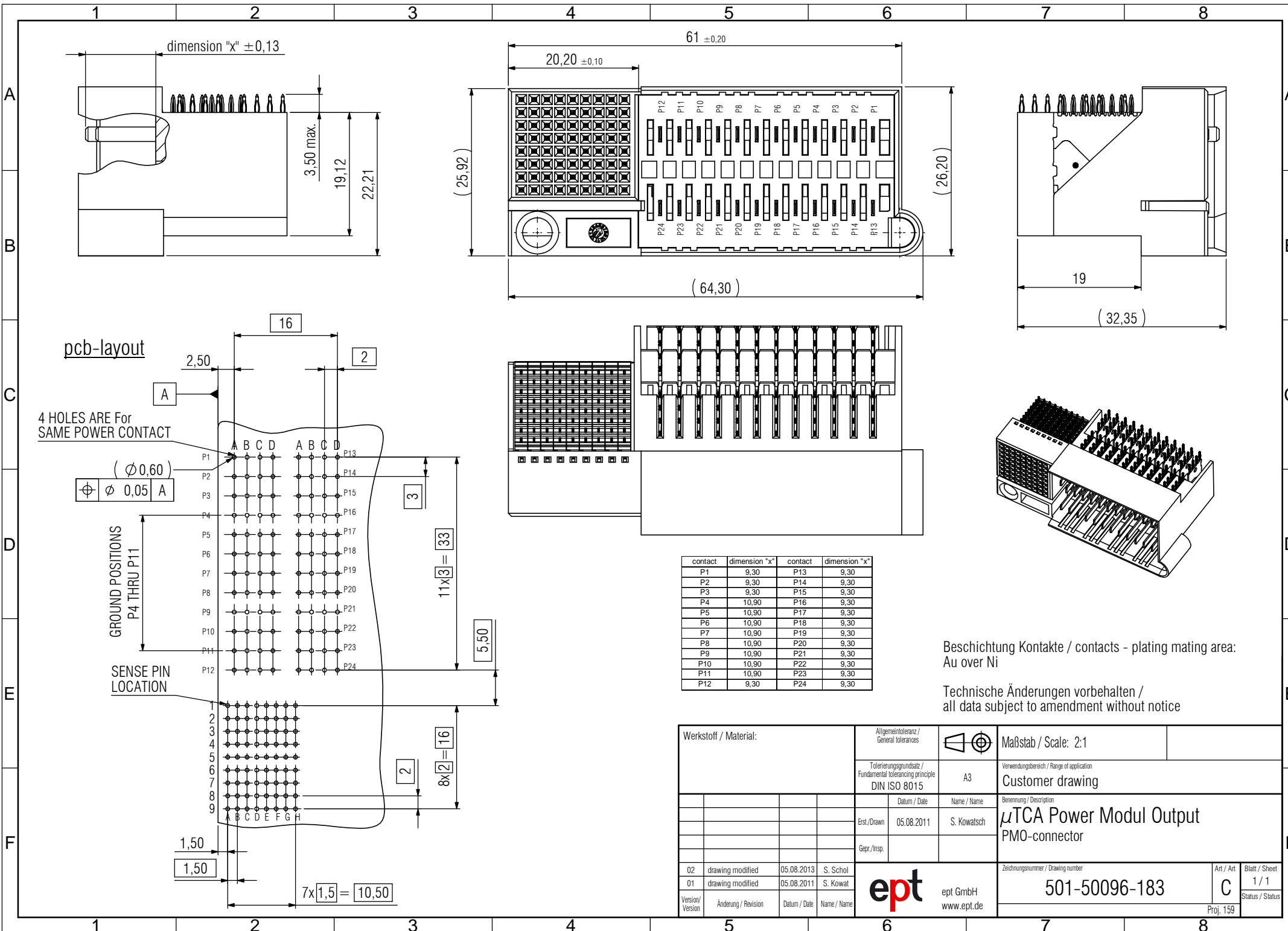


© The reproduction, distribution and utilization of this document as well as the communication of its contents to others without express authorization is prohibited. Offenders will be held liable for the payment of damages. All rights reserved in the event of the grant of a patent, utility model or design.



contact	dimension "x"	contact	dimension "x"
P1	9,30	P13	9,30
P2	9,30	P14	9,30
P3	9,30	P15	9,30
P4	10,90	P16	9,30
P5	10,90	P17	9,30
P6	10,90	P18	9,30
P7	10,90	P19	9,30
P8	10,90	P20	9,30
P9	10,90	P21	9,30
P10	10,90	P22	9,30
P11	10,90	P23	9,30
P12	9,30	P24	9,30

Beschichtung Kontakte / contacts - plating mating area:
Au over Ni

Technische Änderungen vorbehalten /
all data subject to amendment without notice

Werkstoff / Material:		Allgemeintoleranz / General tolerances		Maßstab / Scale: 2:1	
		Tolerierungsgrundsatz / Fundamental tolerancing principle DIN ISO 8015		A3 Verwendungsbereich / Range of application Customer drawing	
		Datum / Date		Name / Name	
		Erst./Drawn: 05.08.2011		S. Kowatsch	
		Gepr./Insp.			
				Benennung / Description μTCA Power Modul Output PMO-connector	
02 drawing modified 05.08.2013 S. Schol		01 drawing modified 05.08.2011 S. Kowat		Zeichnungsnummer / Drawing number 501-50096-183	
Version / Version		Änderung / Revision		Datum / Date	
				Name / Name	
				ept GmbH www.ept.de	
				Art / Art C	
				Blatt / Sheet 1/1	
				Status / Status	
				Proj. 159	