

ROCKER SWITCH

Model Information

KCD 1 - 1 02 (E) (N) (L) - 2 C3 - R / B

- Base color
- Cap color
- Cap marking
- Product Number
- Bent terminals
- Neon lamp
- Dot
- Circuit function
- Poles
- Sub-Miniature type
- Rocker Switch

Specification

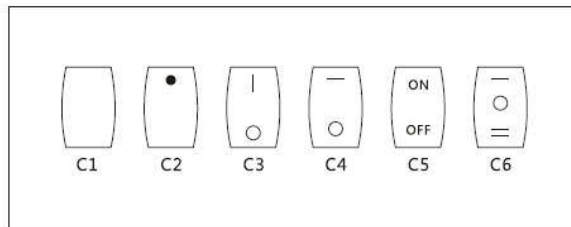
1. Rating: ()6A 125VAC; 3A 250VAC
2. Contact Resistance: 35mΩ max
3. Insulation Resistance: 500VDC 100mΩ min
4. Dielectric Strength: 1500VAC, 1minute
5. Operating Temperature: -25°C ~ +85°C
6. Electrical Life: 10'000 Cycles









Circuit function

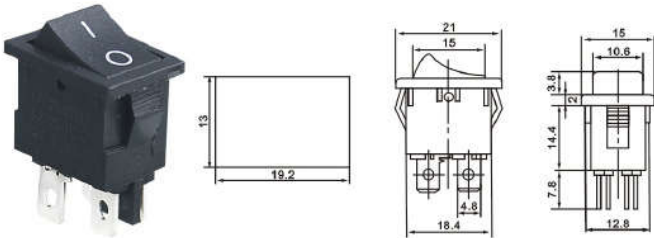
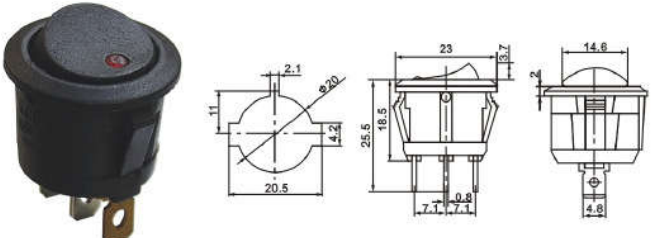
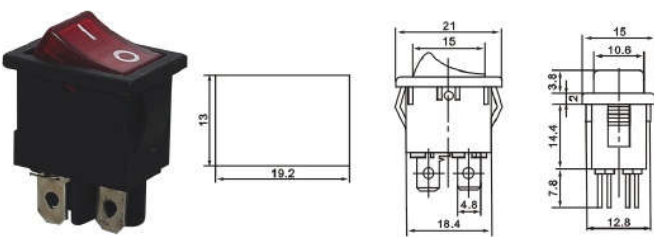
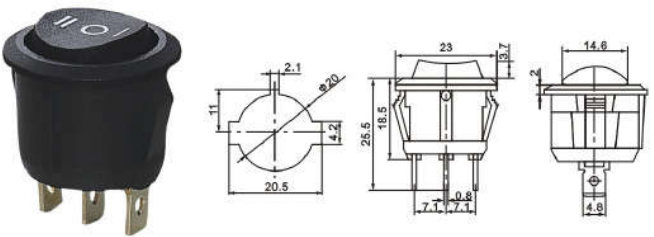
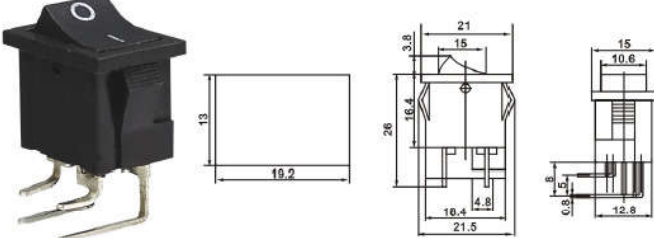
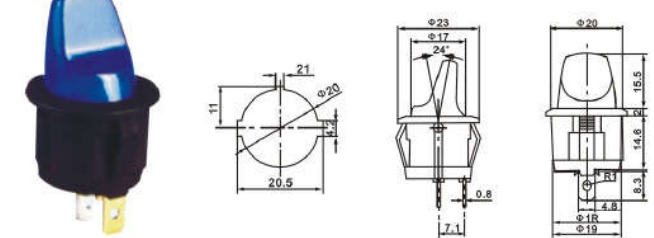
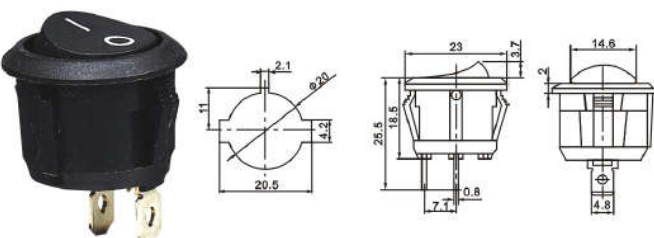
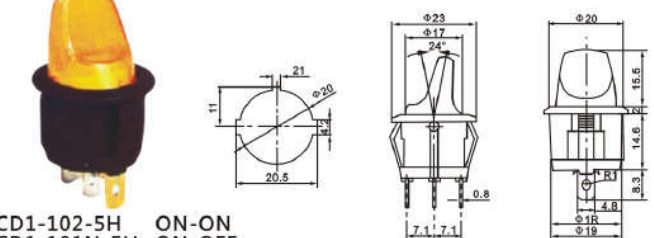
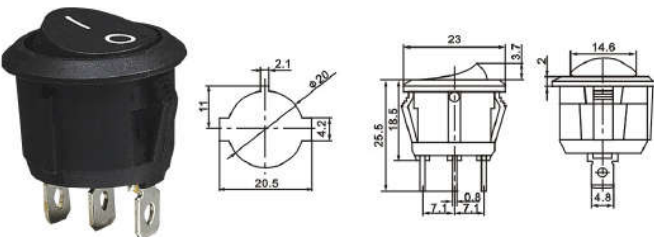
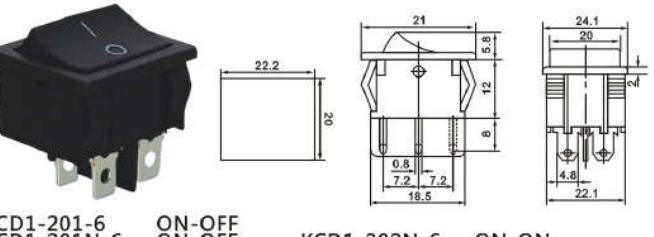
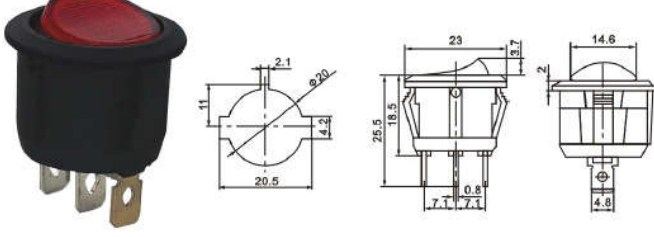
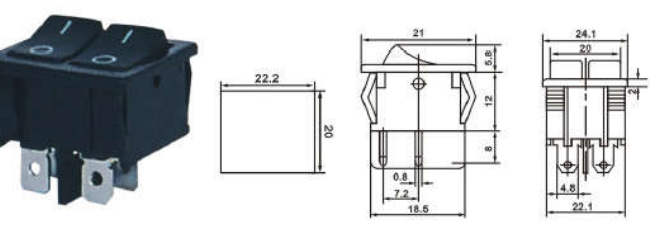
01	ON	-	OFF
02	ON	-	ON
11	(ON)	-	OFF
12	ON	-	(ON)
03	ON	OFF	ON
13	ON	OFF	(ON)
22	OFF	ON	ON
23	(ON)	OFF	(ON)

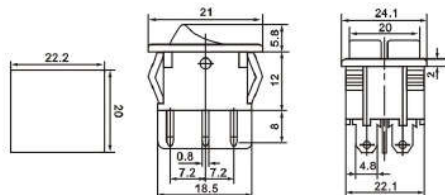
() Indicates Momentary

Cap marking

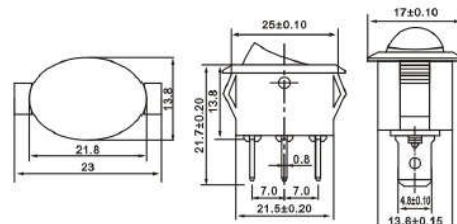


 <p>KCD1-101 ON-OFF</p>	 <p>KCD1-101-2 ON-OFF KCD1-111-2 (ON)-OFF (单复位) KCD1-102-2 ON-ON</p>
 <p>KCD1-102 ON-ON</p>	 <p>KCD1-101N-2</p>
 <p>KCD1-101-1 ON-OFF KCD1-102-1 ON-ON</p>	 <p>KCD1-103-2 ON-OFF-ON KCD1-123-2 (ON)-OFF-(ON) (双复位)</p>
 <p>KCD1-101L-2 ON-OFF KCD1-102L-2 ON-ON KCD1-103L-2 ON-OFF-ON</p>	 <p>KCD1-101N-3 ON-OFF</p>

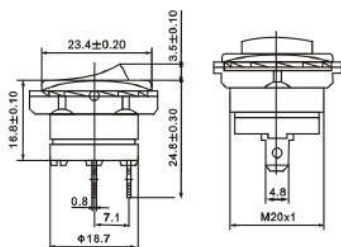
 <p>KCD1-201-4 ON-OFF</p>	 <p>KCD1-101EN-5 ON-OFF</p>
 <p>KCD1-201N-4 ON-OFF</p>	 <p>KCD1-103-5 ON-OFF-ON</p>
 <p>KCD1-201L-4 ON-OFF</p>	 <p>KCD1-101-5H ON-OFF</p>
 <p>KCD1-101-5 ON-OFF</p>	 <p>KCD1-102-5H ON-ON KCD1-101N-5H ON-OFF KCD1-103-5H ON-OFF-ON</p>
 <p>KCD1-102-5 ON-ON</p>	 <p>KCD1-201-6 ON-OFF KCD1-201N-6 ON-OFF KCD1-202-6 ON-OFF KCD1-202N-6 ON-ON KCD1-203-6 ON-OFF-ON</p>
 <p>KCD1-101N-5 ON-OFF</p>	 <p>KCD1-2101-6 ON-OFF</p>



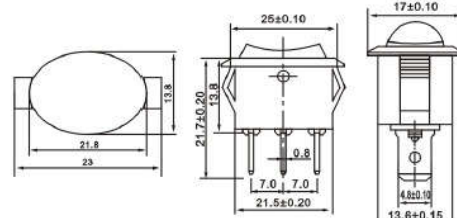
KCD1-2102-6 ON-ON



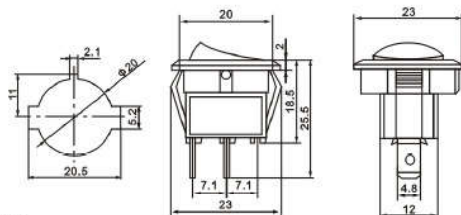
KCD1-102-9 ON-ON
KCD1-101N-9 ON-OFF



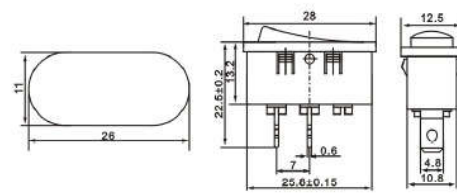
KCD1-101N-7 ON-OFF



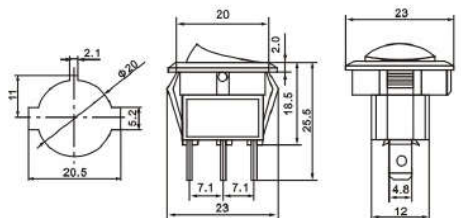
KCD1-103-9 ON-OFF-ON



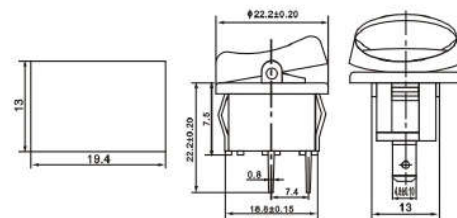
KCD1-101-8 ON-OFF
KCD1-102-8 ON-ON
KCD1-103-8 ON-OFF-ON



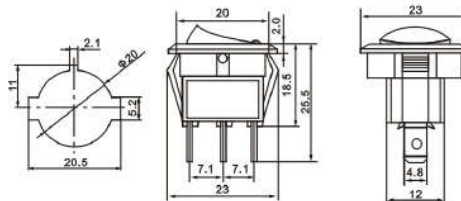
KCD1-101-10 ON-OFF
KCD1-102-10 ON-ON



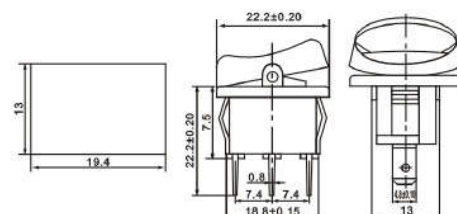
KCD1-101N-8



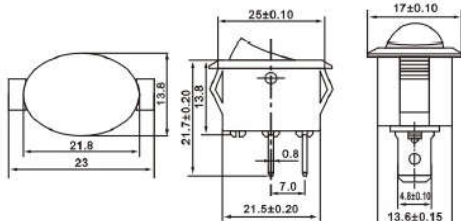
KCD1-101-11



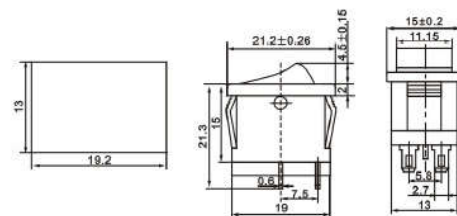
KCD1-101EN-8 ON-OFF



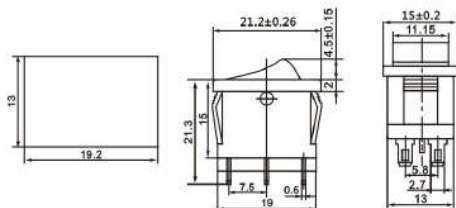
KCD1-102-11 KCD1-103-11



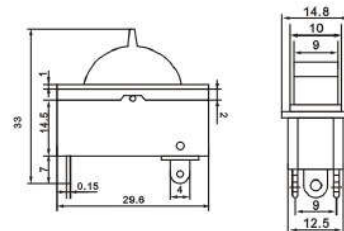
KCD1-101-9 ON-OFF



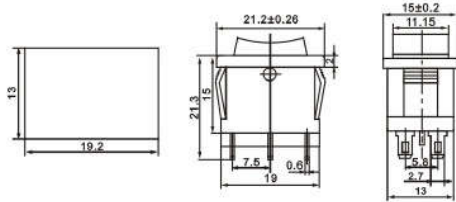
KCD1-201-1 ON-OFF



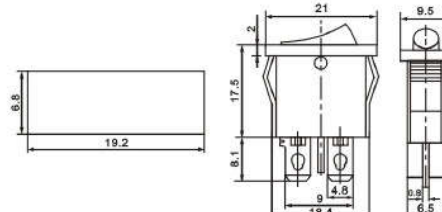
KCD1-202-1 ON-ON



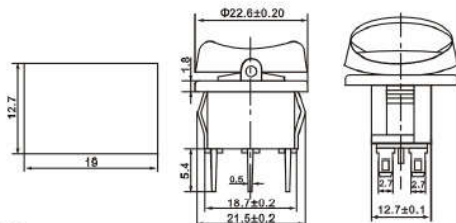
KCD1-122-2 OFF-ON-OFF



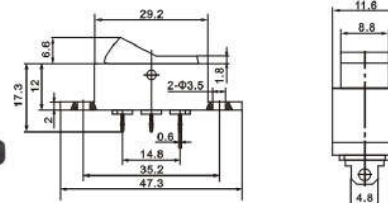
KCD1-203-1 ON-OFF-OFF



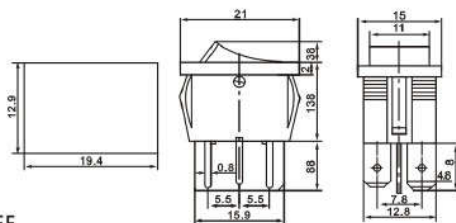
KCD1-101-12 ON-OFF



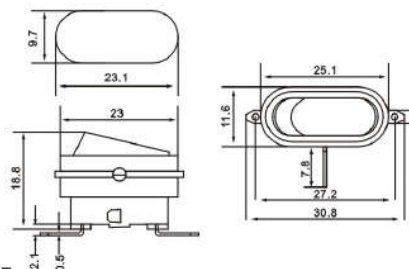
KCD1-202-1R ON-ON
KCD1-203-1R ON-OFF-OFF



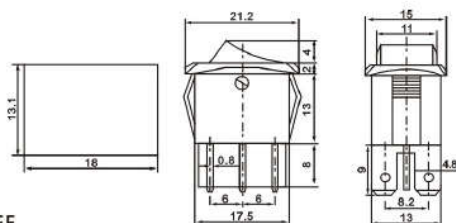
KCD1-102-13 ON-ON



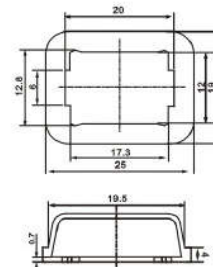
KCD1-201-2 ON-OFF
KCD1-202-2 ON-OFF
KCD1-203-2 ON-OFF-OFF



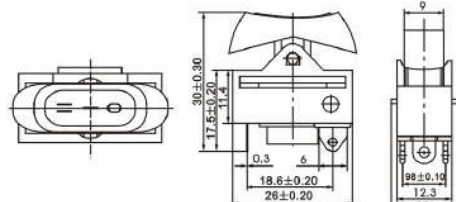
KCD3-101-14 ON-OFF



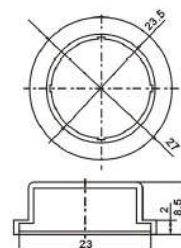
KCD1-201-3 ON-OFF
KCD1-202-3 ON-ON
KCD1-203-3 ON-OFF-OFF



WPC-01
Waterproof Cover



KCD1-122-1 OFF-ON-OFF



WPC-02
Waterproof Cover