

EPLAN Electric P8: electrical CAD design software

Electrical Engineering Design Software

EPLAN Electric P8 is an electrical engineering design software program that offers unlimited possibilities for project planning, documentation, and management of automation projects. The automatic production of detailed reports based on wiring diagrams is an integral part of a comprehensive documentation system and provides subsequent phases of the project, such as production, assembly, commissioning and service with the data required. Engineering data from other project areas, such as fluid and pneumatic engineering, can be exchanged via interfaces within our CAE software. This therefore guarantees consistency and integration throughout the entire product development process.

Benefits of EPLAN over traditional CAD packages

EPLAN develop solutions for greater efficiency, putting integration and automation at everything it does by providing end-users with all the core functions required of an electrical design package, and easily-integrated additional tools that can be adapted for industry-specific processes; from fluid and pneumatic engineering to enclosure design.

As a result, EPLAN offers many advantages over traditional CAD packages. The main benefits include:

- The ability to automatically connect, mend or break lines
- Instantaneous device tagging and wire numbering
- Provision of point to point wire lists
- Automatic creation of reports and BOM's
- Provisions that go far beyond providing the software itself, for example, by offering our Data Portal which delivers online device data on over 500,000 components from leading manufacturers such as ABB, B&R, Mitsubishi Electric, Omron, Phoenix Contact and Schneider Electric.

Additional benefits

You determine the method of operation

Project documentation – quantity and quality

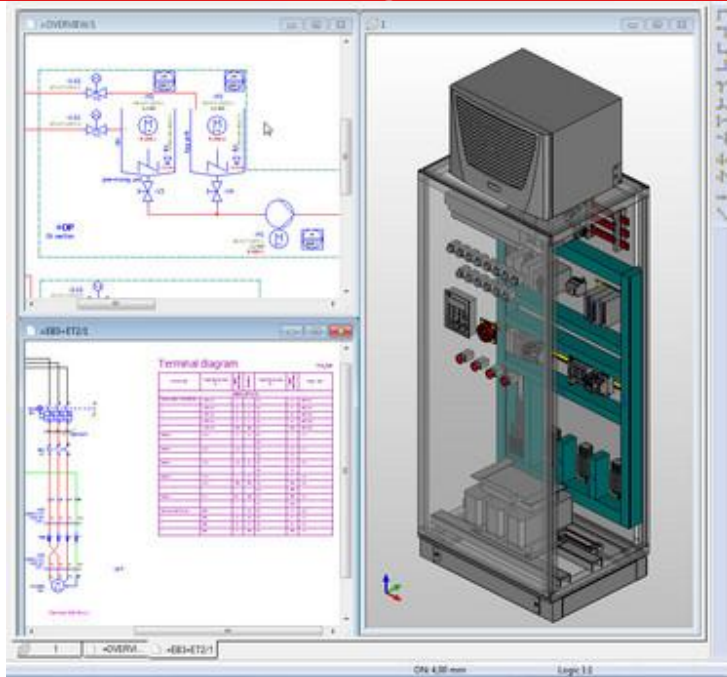
Concentrating on essentials

Variant engineering – innovative, powerful and impressive

Internationally standardised and continuously localised

Added value at a glance

EPLAN customers also bought



EPLAN Pro Panel

Software solution for the 3D engineering of control cabinets and switchgear systems.