



Fuzhou Xinxiangwei Electronic Technology Co.,Ltd

L4030 Series



Solder Mount Feed-thru Capacitor

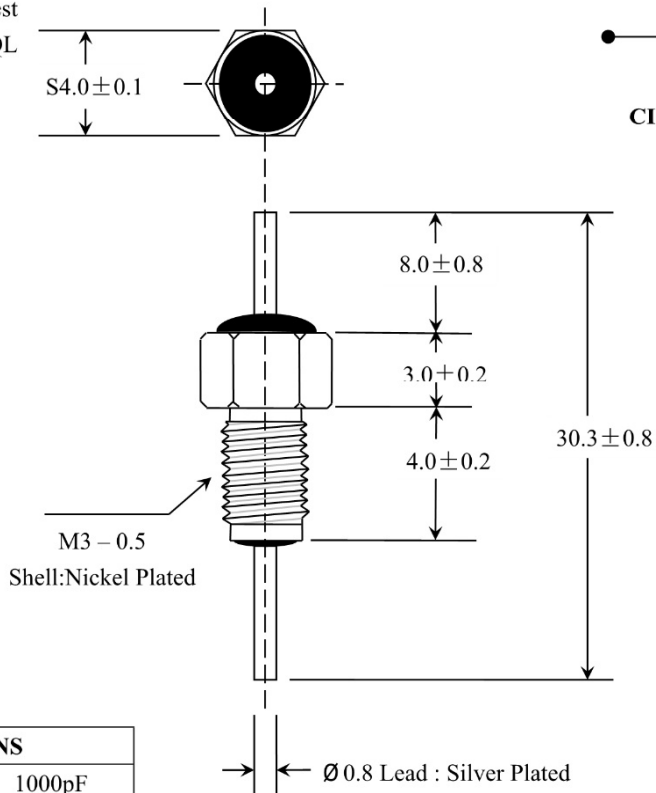
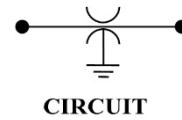
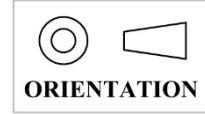
Resin Sealed Filter

Part No. : L4030
Size : M2.5 M3
Spec. : 1000PF-0.1UF
Vol. : 100VDC

Sales Drawing

Do not Scale it()

Electrical Testing
As Xiangwei standard test plans and GB/T-2828 AQL value Test Method.



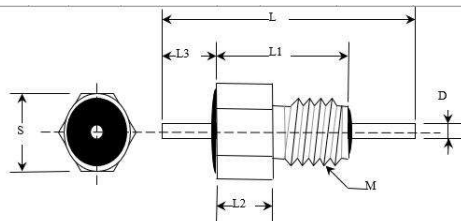
SPECIFICATIONS	
Capacitance	1000pF
Dissipation Factor	<3.5%
Capacitance Tolerance	+80%,-20%
Temp Characteristics	X7R
Rating Voltage	100VDC
DWV	300VDC
Current	7A
I.R. 100vdc	>4000MΩ
Operating Range	-55°C+125°C

Notes:

- 1、 Do not use a hard object beat capacitor body.
- 2、 Storage:Usual temperature by sealed.
- 3、 Soldering:Using constant electric iron soldering,Do not use furnace welding and dip soldering methods.
- 4、 RoHS Part(Lead free).



Install Torque	Title:
0.25Nm	Feed-thru Filter
Soldering Temp $\leq 280^{\circ}\text{C}$	
Soldering Time :3-5sec	Unit : (mm)
LCA®	L4030-034N



Part No.	S	M	D	L	L1	L2	L3	Capacitance	Tol.	Rated Voltage	Testing Voltage	Current	Insulate Resistance	Circuit	Operating Temp.	Sealed	Shell Plated
L4030-002	4	3*0.5	0.75	30.3	7	3	8.3	200pF	Z	100VDC	200VDC	7A	3000MΩ	C	Y5P	Black Epoxy	Silver
L4030-003A	4	3*0.5	0.75	30.3	7	3	8.3	470pF	Z	100VDC	300VDC	7A	3000MΩ	C	Y5P	Black Epoxy	Silver
L4030-004D	4	3*0.5	0.75	30.3	7	3	8.3	1000pF	Z	100VDC	300VDC	7A	3000MΩ	C	X7R	Black Epoxy	Silver
L4030-004E	4	3*0.5	0.75	30.3	7	3	8.3	1500pF	Z	100VDC	300VDC	7A	3000MΩ	C	X7R	Black Epoxy	Silver
L4030-004N	4	3*0.5	0.75	30.3	7	3	8.3	1000pF	Z	100VDC	300VDC	7A	3000MΩ	C	X7R	Black Epoxy	Nickel
L4030-005A	4	3*0.5	0.7	30.3	7	3	8.3	3300pF	Z	100VDC	300VDC	7A	3000MΩ	C	Y5V	Black Epoxy	Silver
L4030-007	4	3*0.5	0.7	30.3	7	3	8.3	100pF	Z	100VDC	300VDC	7A	10GΩ	C	SL	Black Epoxy	Silver
L4030-008C	4	3*0.5	0.75	30.3	7	3	8.3	0.01uF	Z	100VDC	300VDC	7A	1000MΩ	C	X7R	Black Epoxy	Silver
L4030-011B	4	3*0.5	0.75	30.3	7	3	8.3	0.1uF	Z	50VDC	150VDC	7A	1000MΩ	C	X7R	Black Epoxy	Silver
L4030-021N	4	3*0.5	0.7	30.3	7	3	8.3	100pF	M	100VDC	300VDC	7A	10GΩ	C	SL	Black Epoxy	Nickel
L4030-029	4	3*0.5	0.75	30.3	7	3	13	0.01uF	Z	100VDC	300VDC	7A	3000MΩ	C	X7R	Black Epoxy	Silver
L4030-030N	4	3*0.5	0.75	30.3	6	2.5	8.8	10pF	Z	100VDC	300VDC	7A	10GΩ	C	NPO	Black Epoxy	Nickel
L4030-032N	4	3*0.5	0.75	30.3	6	2.5	8.8	3300pF	Z	100VDC	300VDC	7A	3000MΩ	C	Y5V	Black Epoxy	Nickel
L4030-033N	4	3*0.5	0.75	30.3	6	2.5	8.8	2200pF	Z	100VDC	300VDC	7A	3000MΩ	C	Y5U	Black Epoxy	Nickel
L4030-034N	4	3*0.5	0.75	30.3	6	2.5	8.8	1000pF	Z	100VDC	300VDC	7A	3000MΩ	C	X7R	Black Epoxy	Nickel
L4030-036	4	3*0.5	0.75	30.3	7	3	8.3	0.02uF	Z	50VDC	100VDC	7A	1000MΩ	C	X7R	Black Epoxy	Silver
L4030-037N	4	3*0.5	0.75	30.3	6	2.5	8.8	5pF		100VDC	300VDC	7A	3000MΩ	C		Black Epoxy	Nickel
L4330-053N	4	3*0.5	0.75	28.3	6	2.5	11.5	0.01uF	Z	100VDC	300VDC	7A	3000MΩ	C	Y5V	Black Epoxy	Nickel
L4030-074N	4	3*0.5	0.75	24	7	3	14	1000pF	Z	100VDC	300VDC	7A	3000MΩ	C	X7R	Black Epoxy	Silver
L4030-075N	4	3*0.5	0.75	26	6	2.5	6	1000pF	Z	100VDC	300VDC	7A	3000MΩ	C	X7R	Black Epoxy	Nickel