



The STK500 supports:

ATmega系列
<b>ATmega8; ATmega16; ATmega32; ATmega48; ATmega48P; ATmega64; ATmega88; ATmega88P; ATmega103; ATmega128; ATmega1280; ATmega1281; ATmega1284P; ATmega16HVA; ATmega161; ATmega162; ATmega163; ATmega164P; ATmega165; ATmega165P; ATmega168; ATmega168P; ATmega169; ATmega169P; ATmega323; ATmega324P; ATmega325; ATmega325P; ATmega328P; ATmega329; ATmega329P; ATmega644P; ATmega645; ATmega649; ATmega2560; ATmega2561; ATmega3250; ATmega3250P; ATmega3290; ATmega3290P; ATmega6450; ATmega6490; ATmega8515; ATmega8535; ATmega32C1; ATmega32M1; ATmega32U4; ATmega32HVB; ATmega43U</b>
ATtiny系列
<b>ATtiny12; ATtiny13; ATtiny15; ATtiny167; ATtiny22; ATtiny2313; ATtiny24; ATtiny25; ATtiny26; ATtiny261; ATtiny44; ATtiny45; ATtiny461; ATtiny48; ATtiny84; ATtiny85; ATtiny861; ATtiny88</b>
90系列 (老型号)
<b>AT90S1200; AT90S2313; AT90S/LS2323; AT90S/LS2343; AT90S/LS2333; AT90S4414; AT90S/LS4433; AT90S/LS4434; AT90S8515; AT90S/LS8535</b>
其它型号
<b>AT86RF401; AT89S51; AT89S52; AT90PWM2; AT90PWM2B; AT90PWM3; AT90PWM3B; AT90CAN32; AT90CAN64; AT90CAN128; AT90USB82; AT90USB162; AT90USB646; AT90USB647; AT90USB1286; AT90USB1287</b>

Download Bootloader for Arduino



## Example: Burn Bootloader to Arduino UNO

1. Hardware connection: See the picture above;
2. Install AVRISP driver in the CD or download the AVR studio 4.19 at:

<http://www.atmel.com/tools/studioarchive.aspx>

*Caution: The AVR STUDIO4.13 software in the CD can no support ATmega328P.*

4. Burn Bootloader to Arduino UNO

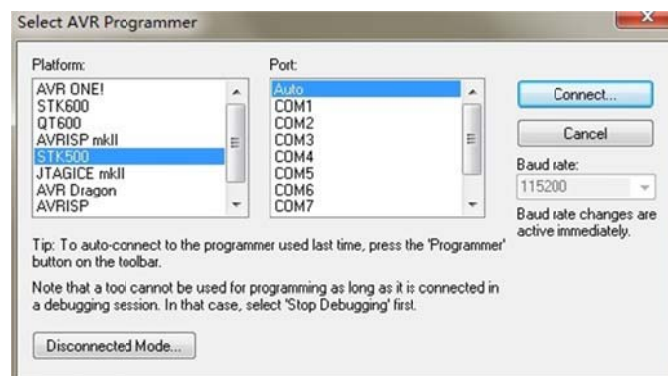
-> Open AVR STUDIO4.19

-> Connect to STK500

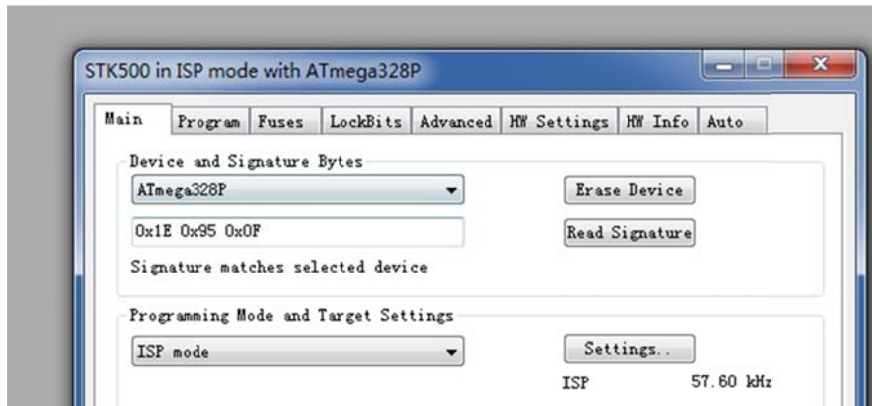


-> Select Communication ports, if the STK500 can't be recognized by your PC, you may need to download the STK500 driver at:

<http://prolificusa.com/pl-2303hx-drivers/>

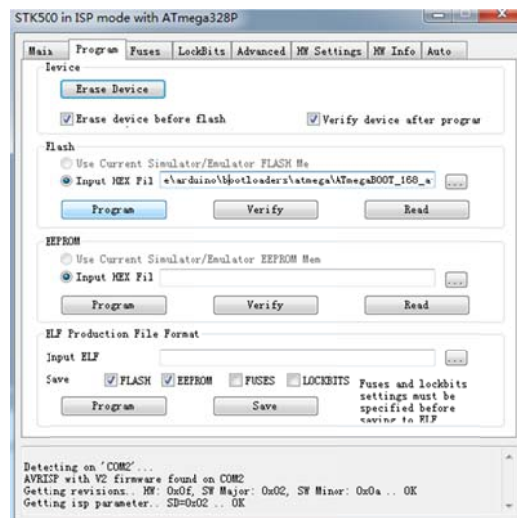


-> Select Device "ATmega328P", if the connection is OK, you will see the reminds: signature matches selected device

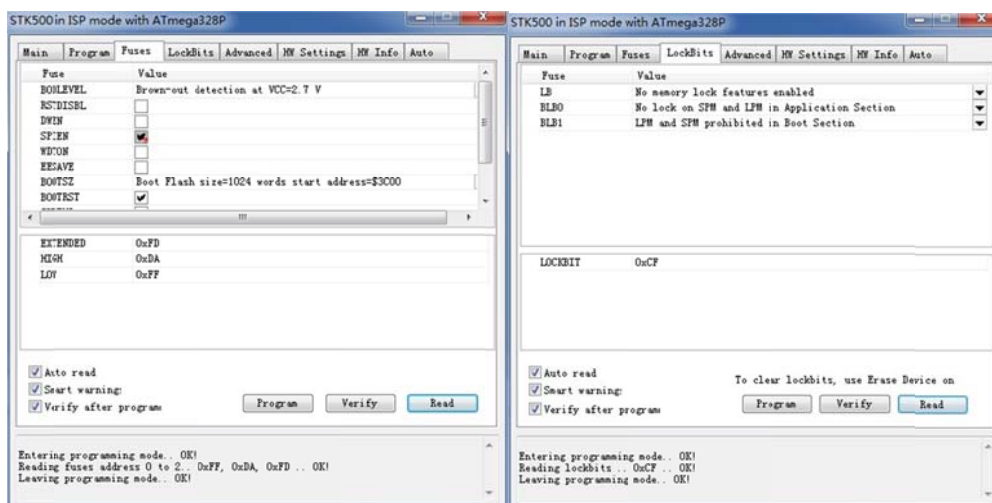


->Select Bootloader >

Path:\arduino-1.0\hardware\arduino\bootloaders\optiboot\optiboot\_atmega328.hex



->Burn the fuse bit and lock bit as below:





[www.elecrow.com](http://www.elecrow.com)