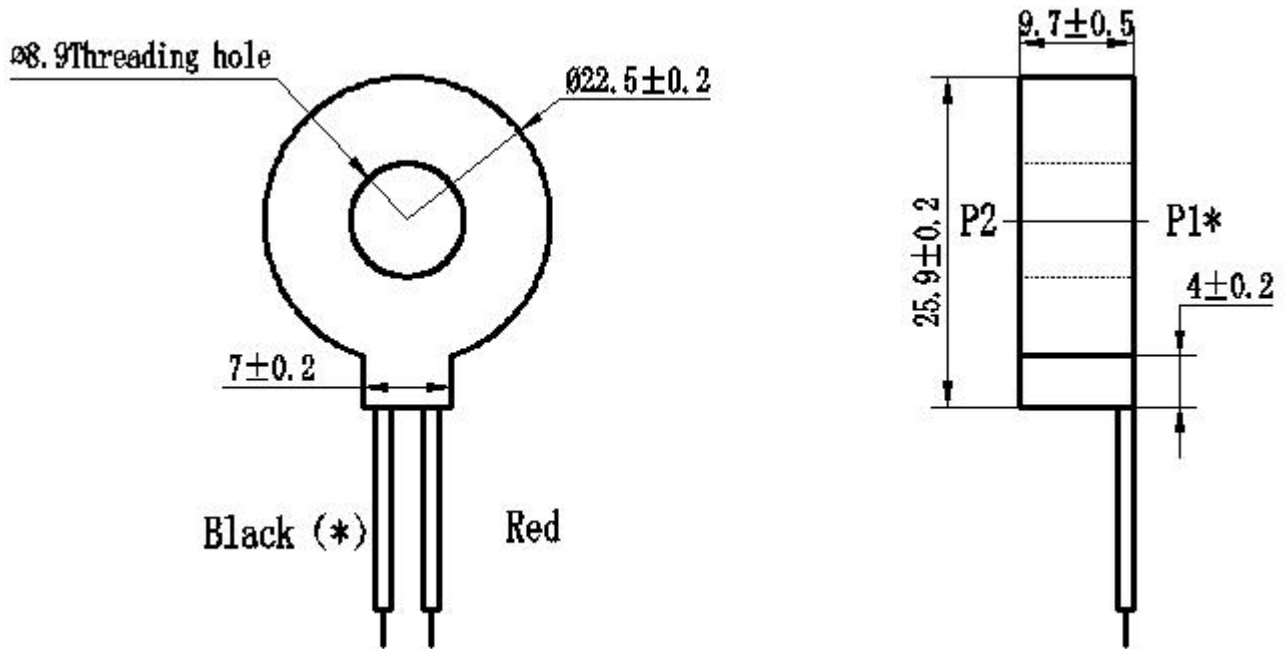


ZMCT350C Current Transformer

high accuracy, good consistency, for current measurement

Structural parameters:



Front view

Left view

The main technical parameters:

Model	ZMCT350C
input current	0-50A (sampling resistor 10Ω)
Rated output current	2.5mA at input 5A
turns ratio	2000:1
phase angle error	≤20' (input 5A, sampling resistor 10Ω)
linear range	0~50A(sampling resistor 10Ω)
linearity	0.2% (5%dot~120%dot)
Ratio error	-0.5%≤f≤+0.5%(input 5A, sampling resistor 10Ω)
isolation voltage	3000V
application	measurement
Encapsulation	Epoxy
installation	Output leads installation
operating temperature	-40℃~+85℃

Instruction:

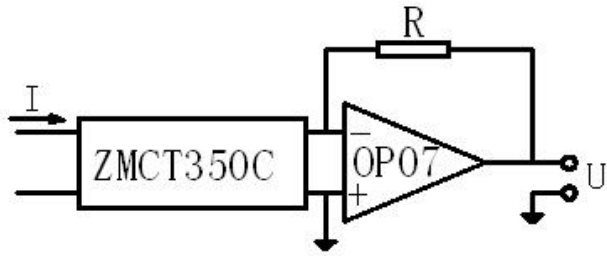
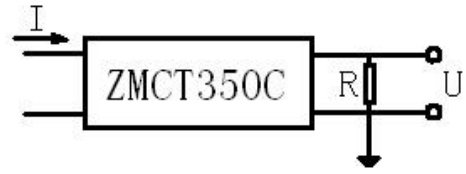


Figure I



$$U = \frac{I}{2000} \cdot R$$

I: input current
R: sampling resistor
U: sampling voltage

Figure II

1. ZMCT350C used for the measurement, the typical usage is shown in Figure I and Figure II. R is a sampling resistor.