

Ferrite Cores

For Power Supply

EER Cores

EER Series

CORE SHAPES AND DIMENSIONS/CHARACTERISTICS

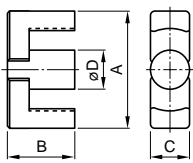


Fig.1

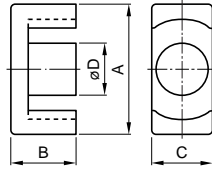


Fig.2

Type	Fig.	Dimensions (mm)				Ae (mm ²)	le (mm)	Weight (g)
		A	B	C	øD			
EER25.5	1	25.5±0.5	9.3±0.2	7.5±0.2	7.5±0.15	44.8	48.2	11
EER28	2	28.55±0.55	14±0.2	11.4±0.25	9.9±0.25	82.1	64	28
EER28L	2	28.55±0.55	16.9±0.25	11.4±0.25	9.9±0.25	81.4	75.5	33
EER35	1	35±0.5	20.7±0.2	11.3±0.2	11.3±0.15	107	90.8	52
EER40	1	40±0.5	22.4±0.2	13.3±0.25	13.3±0.25	149	98	78
EER42	1	42±0.6	22.4±0.2	15.5±0.25	15.5±0.25	194	98.8	102
EER42/42/20	2	42.15±0.65	21.2±0.2	19.6±0.4	17.3±0.25	240	98.6	116
EER49	1	49±0.8	19±0.3	17.2±0.4	17.2±0.25	231	91.3	110

ELECTRICAL CHARACTERISTICS

WITHOUT AIR GAP

Part No.	AL-value (nH/N ²) [1kHz, 0.5mA, 100Ts]	Calculated output power* (W) [100kHz]
PC40EER25.5-Z	1920±25%	87
PC40EER28-Z	2870±25%	203
PC40EER28L-Z	2520±25%	228
PC40EER35-Z	2770±25%	325
PC40EER40-Z	3620±25%	421
PC40EER42-Z	4690±25%	433
PC40EER42/42/20-Z	5340±25%	509
PC40EER49-Z	6250±25%	

* The values were obtained with forward converter mode.

WITH AIR GAP

Part No.	AL-value (nH/N ²) [1kHz, 0.5mA, 100Ts]
PC40EER25.5AXXX*	100±5%, 200±7%
PC40EER28AXXX	200±5%, 400±7%
PC40EER28LAXXX	160±5%, 315±7%
PC40EER35AXXX	200±5%, 400±7%
PC40EER40AXXX	200±5%, 400±7%
PC40EER42AXXX	250±5%, 500±7%
PC40EER42/42/20AXXX	250±5%, 500±7%
PC40EER49AXXX	250±5%, 500±7%

* XXX: AL-value

BOBBINS

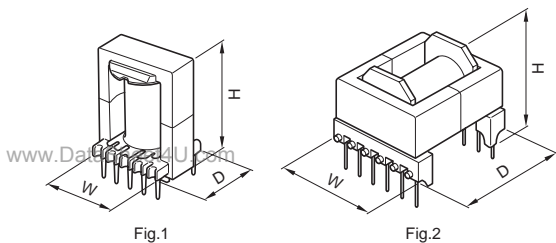


Fig.1

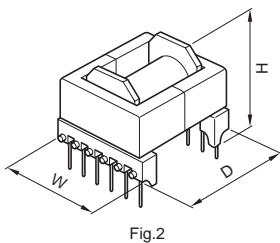


Fig.2

Part No.	Fig.	No. of pin terminal	Dimensions (mm)		
			W	D	H
BEER-25.5-118CP	1	8	26	20	21
BEER-28-1110CP	1	10	29	23	29
BEER-28L-1110CP	1	10	29	23	35
BEER-35-1112CP	1	12	36	29	44
BEER-40-1112CP	1	12	41	30	46
BEER-42-1114CP	1	14	43	30	47
BEER-42/42/20-1112CP	1	12	43	37	46
BEER-49-1118CP	1	18	50	37	43
BEER-28-1112CPH	2	12	31	33	26
BEER-28L-1112CPH	2	12	31	38	26
BEER-35-1116CPH	2	16	41	46	31
BEER-40-1116CPH	2	16	41	45	32
BEER-42-1116CPH	2	16	43	46	35

• Material: FR phenol, UL Grade: 94V-0, Pin material: Steel wire (Solder plated)