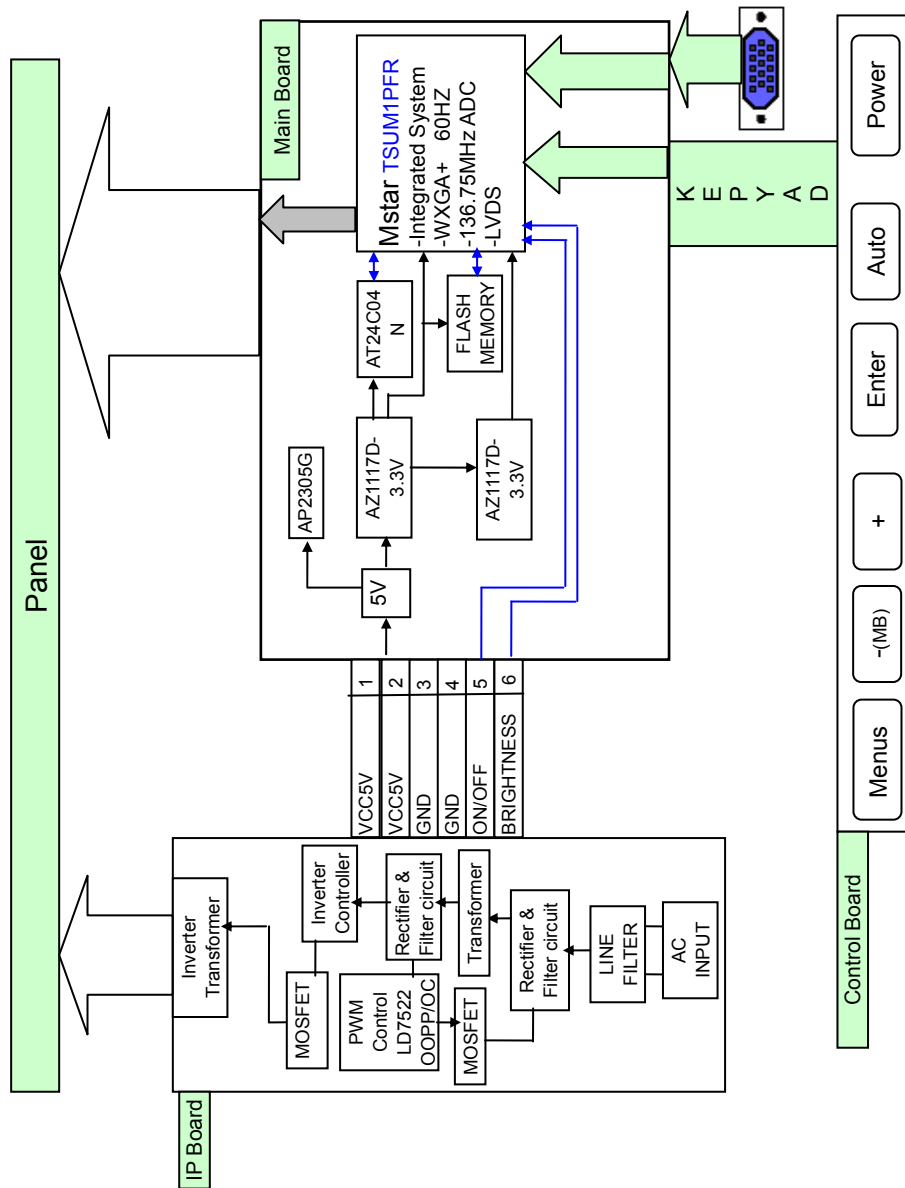


7 Schematic Diagram

7-1 Circuit Descriptions



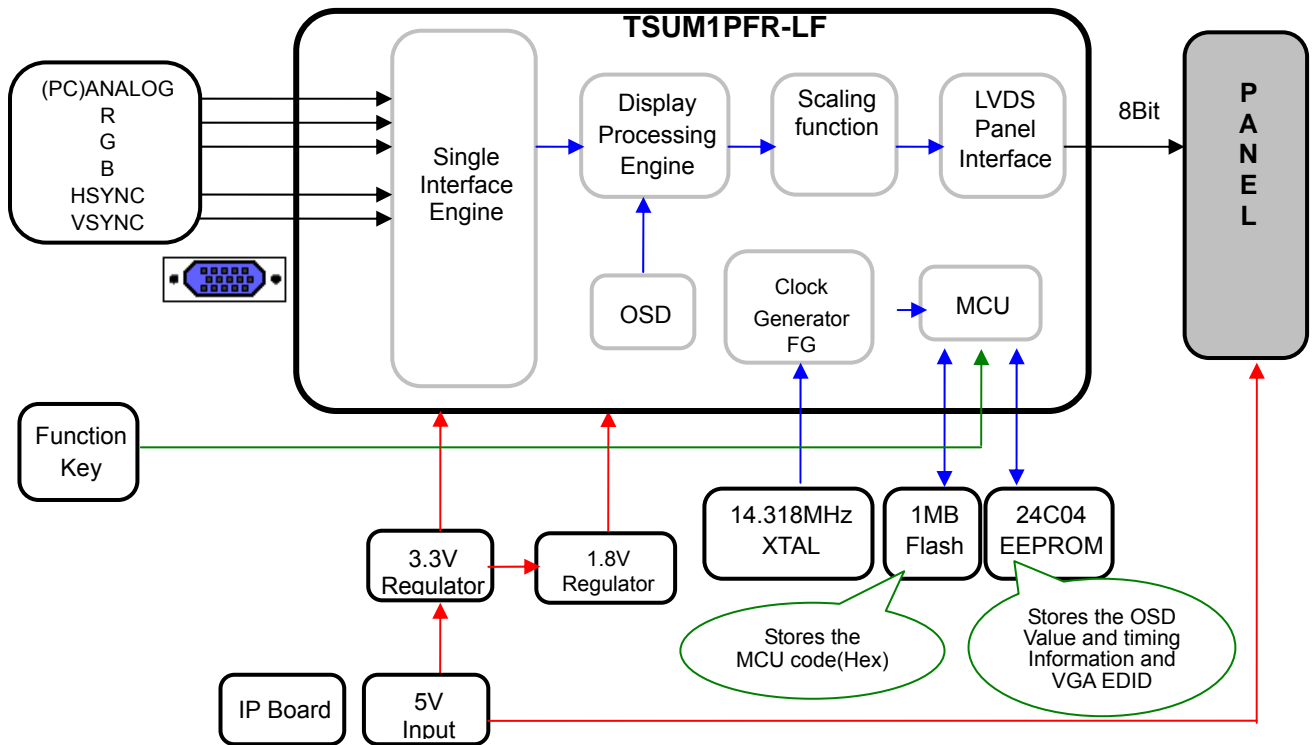
Location	Function	Remark
Scalar U105	Besides the ADC, LVDS, and scaling part, an MCU is embedded as well. All of them are integrated into one chip.	TSUM1PFR
Flash Memory U108	Stores the MCU program embedded in the scalar. It is of a flash type and rewritable.	SST25VF010A
U107	Stores the OSD and various timing values, and VGA EDID	24C04
Regulator	An IC that receives DC voltage inputs. It is used in circuits that stabilize the DC voltage.	LD1117AL-3.3V LD1117AL-1.8V

Attached PDF.

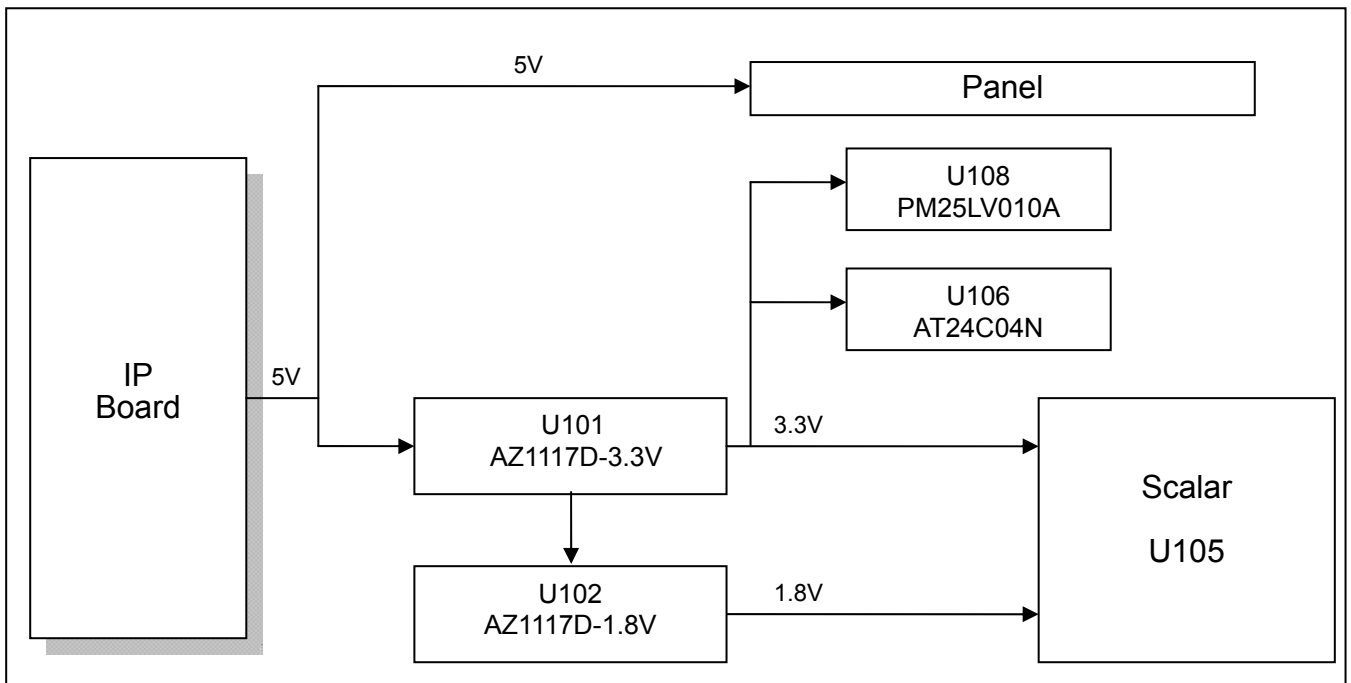


7-1.pdf

7-2 Schematic Diagrams (Scalar Part)



7-3 Schematic Diagrams (Power Flowchart)



Attached PDF.



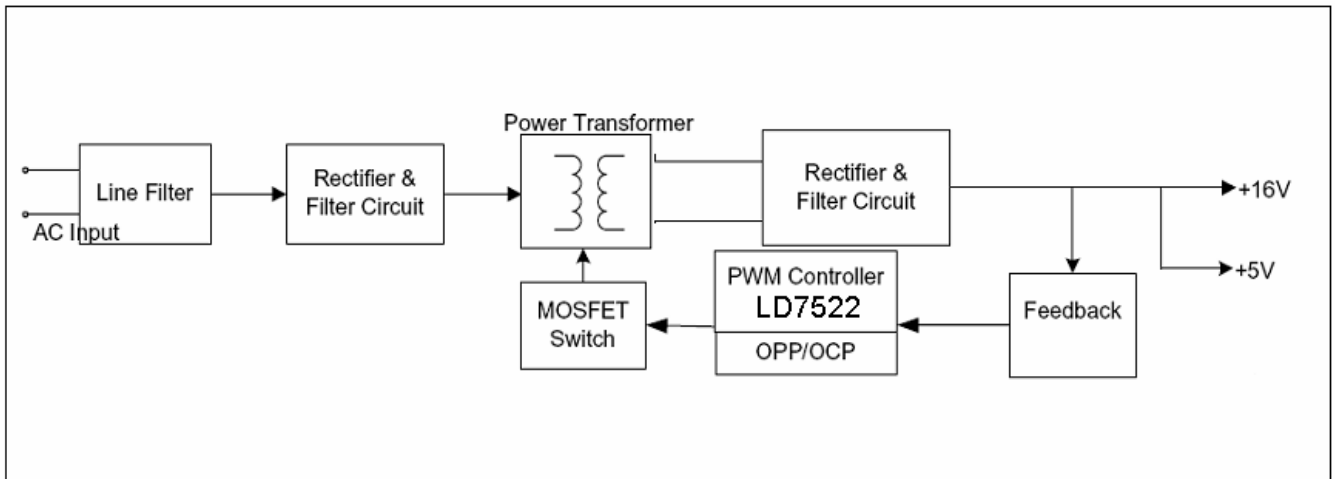
7-2. pdf



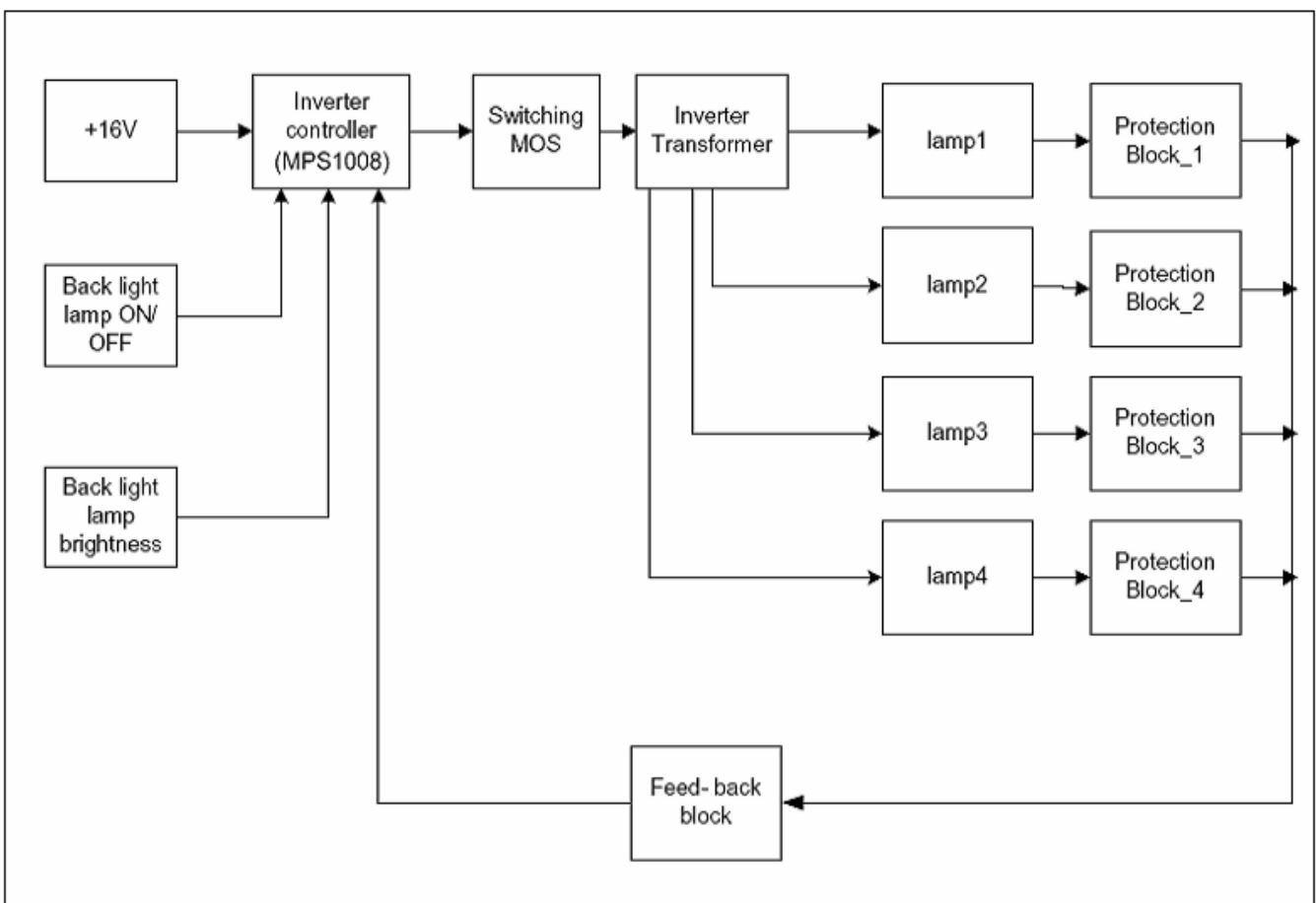
7-3. pdf

7-4 Schematic Diagrams (IP Board)

■ SMPS Part



■ Inverter Part



Attached PDF.



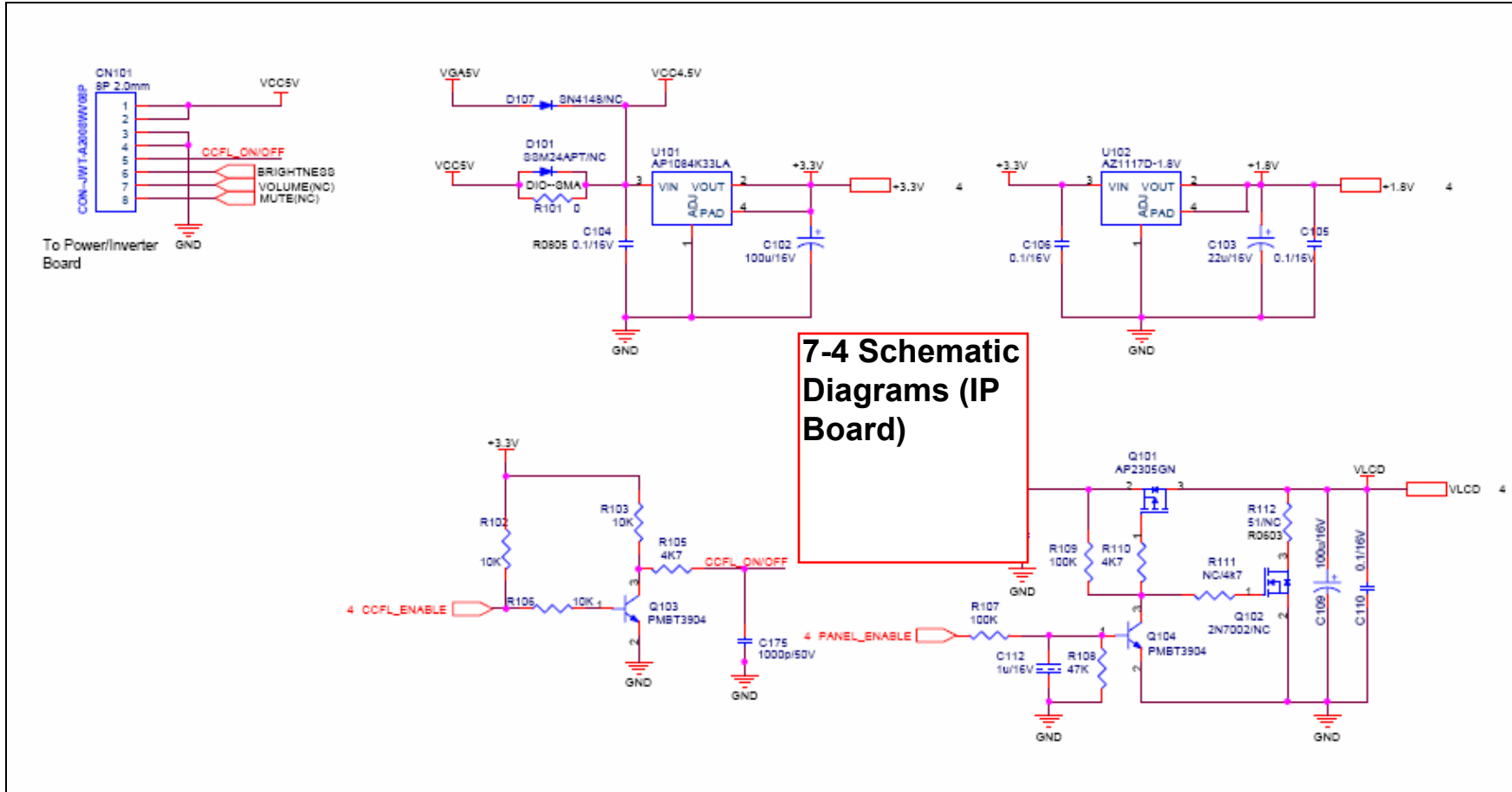
7-4. pdf

Memo

7-5 Schematic Diagrams (Main PBA-1)

PDF
923 Main Board.pdf

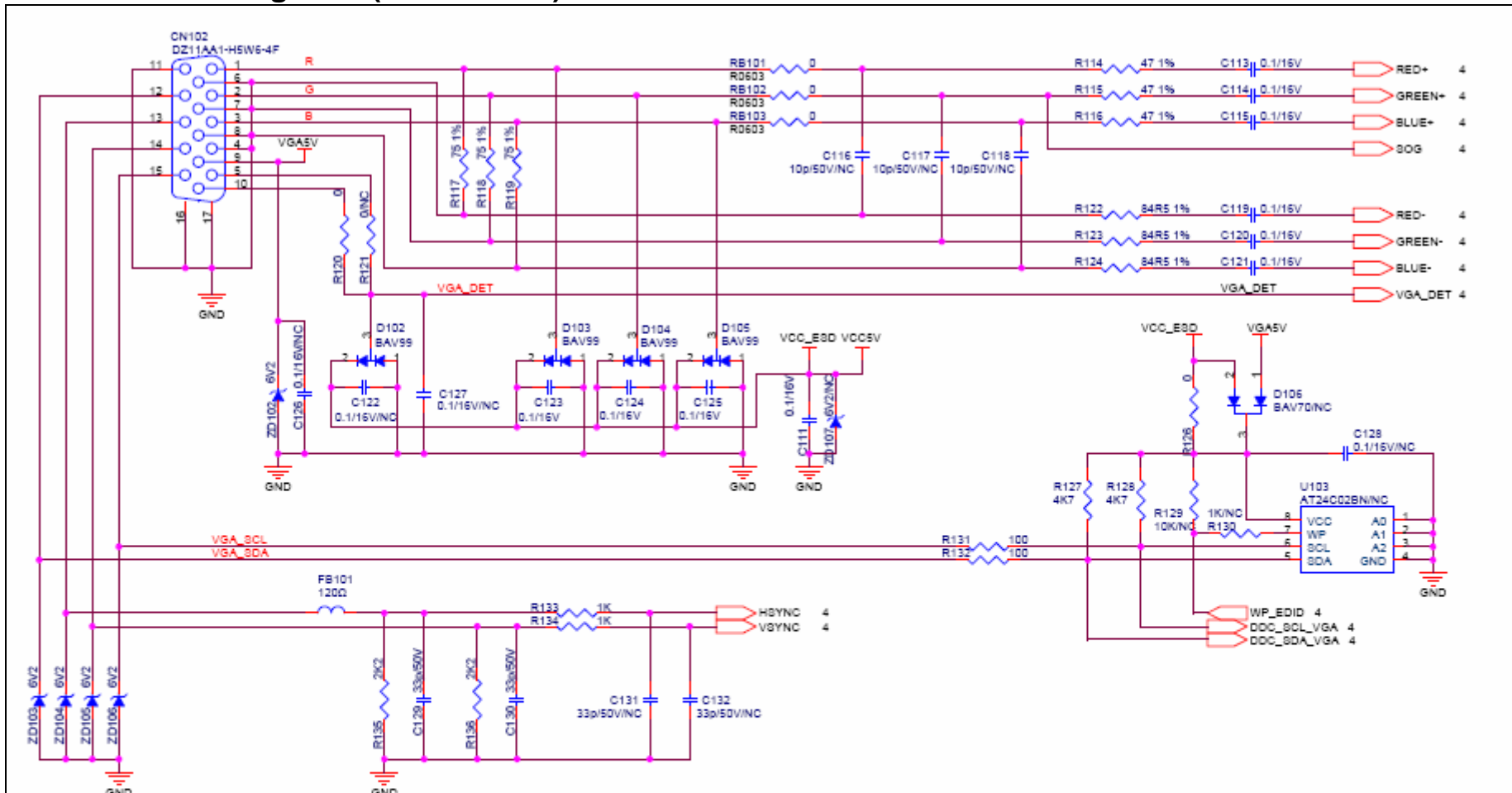
Attached PDF



7-4 Schematic Diagrams (IP Board)

InnoLux		Mstar TSUM1PFR Common Board	
Document Number : Venus923NW	SIZE : A4	APPRO BY :	
TITLE : POWER (DC TO DC)		CHECK BY :	
DATE : 2007-10-31	Rev : V02	DRAWN BY :	
SHEET 2 OF 4		Anxing	

7-5 Schematic Diagrams (Main PBA-2)



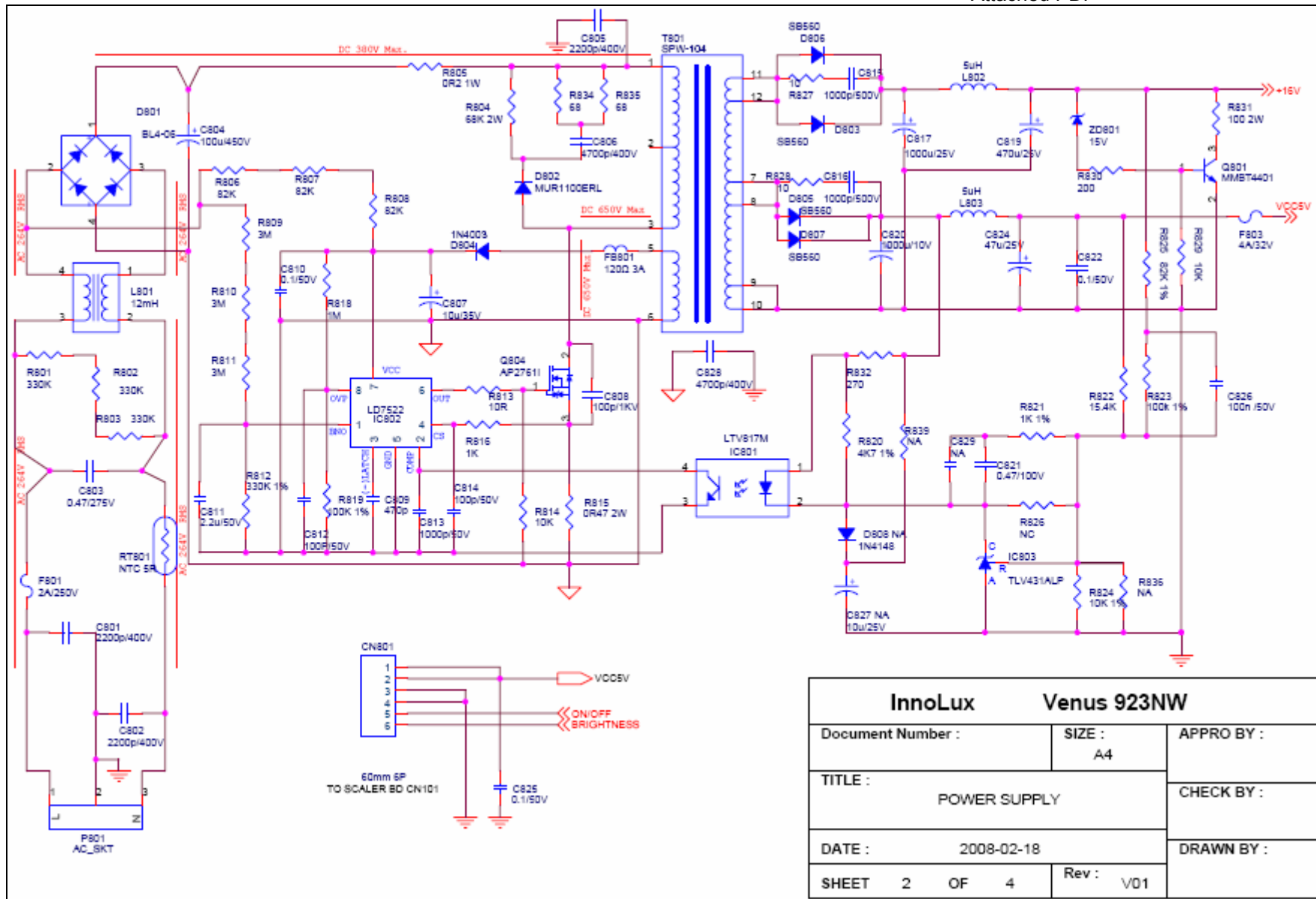
InnoLux		Mstar TSUM1PFR Common Board	
Document Number :	Venus923NW	SIZE :	A4
TITLE :	VGA-INPUT		APPRO BY :
DATE :	2008-3-5	Rev :	V02
SHEET	3	OF	4
			CHECK BY :
			DRAWN BY :
			Anxing

7-6 Schematic Diagrams (Power PBA-1)



923NW Power.pdf

Attached PDF



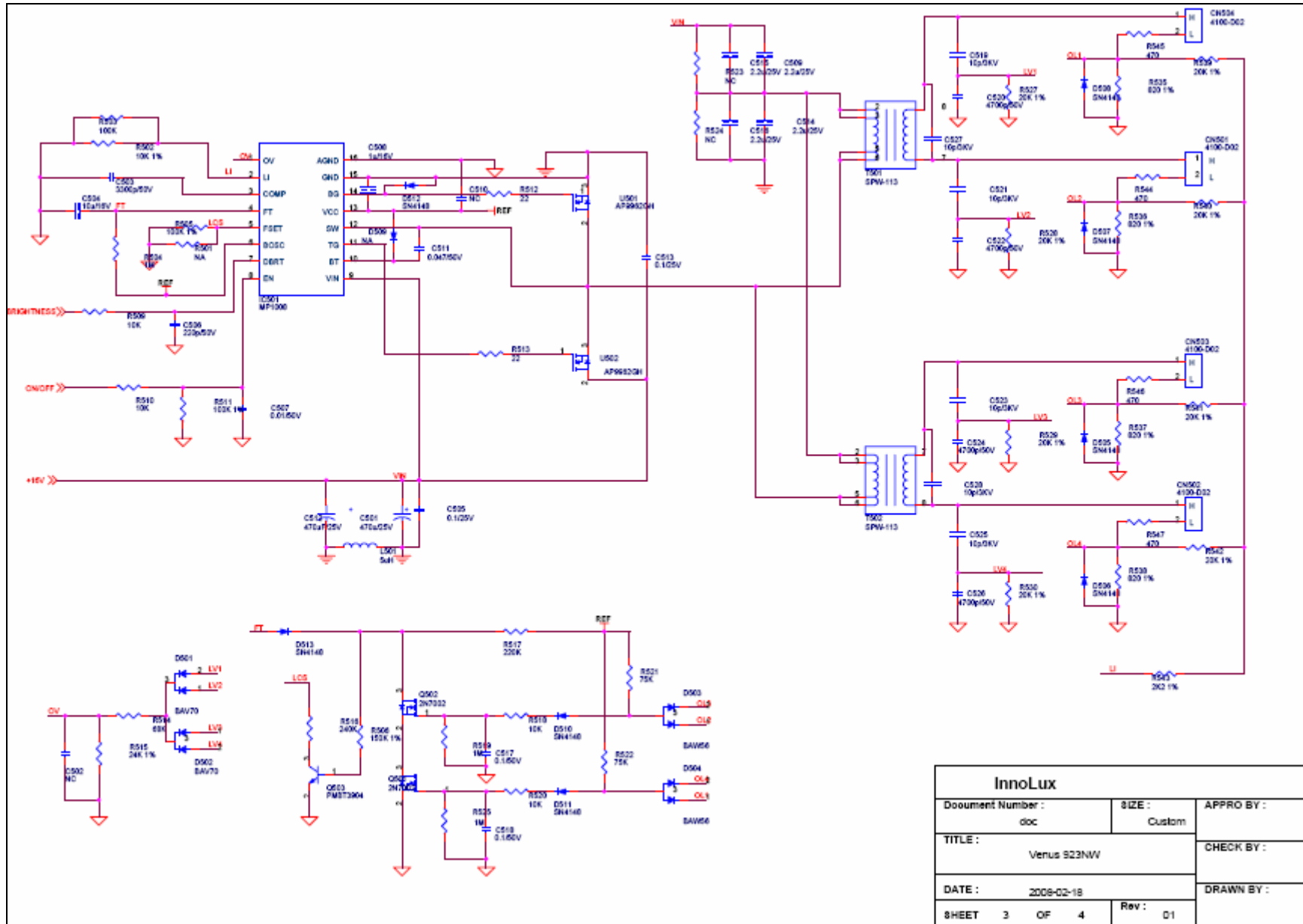
InnoLux		Venus 923NW	
Document Number :	SIZE :	APPRO BY :	
	A4		
TITLE :	POWER SUPPLY		CHECK BY :
DATE :	2008-02-18		DRAWN BY :
SHEET 2 OF 4	Rev :	V01	

7-6 Schematic Diagrams (Power PBA-2)



923nw
inverter.pdf

Attached PDF



InnoLux		
Document Number : doc	SIZE : Custom	APPRO BY :
TITLE : Venus 923NW		CHECK BY :
DATE : 2008-02-18	Rev : D1	DRAWN BY :
SHEET 3 OF 4		

7-7 Schematic Diagrams (Key Function PBA)



923NW Function Board.pdf

Attached PDF

