

**Model Information**

KCD 3 - 1 02 (E) (N) - 2 C7 - R / B

- Base color
- Cap color
- Cap marking
- Product Number
- Neon lamp
- Dot
- Circuit function
- Poles
- Middle type
- Rocker Switch

**Specification**

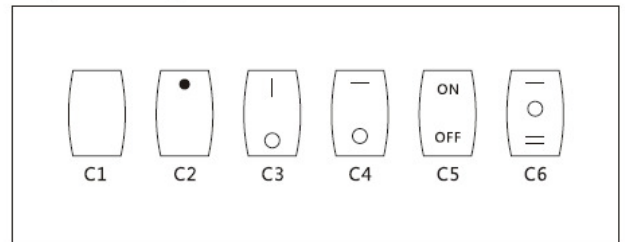
1. Rating: 20A 125VAC; 15A 250VAC; 35A 12VDC
2. Contact Resistance: 35mΩ max
3. Insulation Resistance: 500VDC 100mΩ min
4. Dielectric Strength: 1500VAC, 1minute
5. Operating Temperature: -25°C ~ +85°C
6. Electrical Life: 10'000 Cycles

**Circuit function**

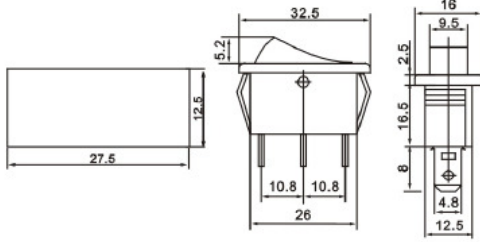
|    |      |     |      |
|----|------|-----|------|
| 01 | ON   | -   | OFF  |
| 02 | ON   | -   | ON   |
| 11 | (ON) |     | OFF  |
| 12 | ON   | -   | (ON) |
| 03 | ON   | OFF | ON   |
| 13 | ON   | OFF | (ON) |
| 23 | (ON) | OFF | (ON) |

( ) Indicates Momentary

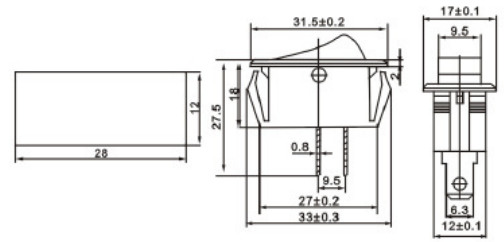
**Cap marking**



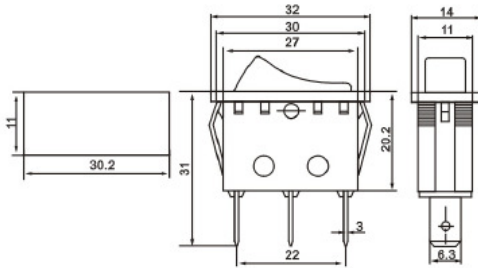
|   |                            |
|---|----------------------------|
| <p>KCD3-101 ON-OFF    KCD3-111 (ON)-OFF</p> | <p>KCD3-101-2 ON-OFF</p>   |
| <p>KCD3-102 ON-ON    KCD3-102N ON-OFF</p>   | <p>KCD3-101N-2V ON-OFF</p> |
| <p>KCD3-101EN ON-OFF</p>                    | <p>KCD3-101N-2C ON-OFF</p> |
| <p>KCD1-103 ON-OFF-ON</p>                   | <p>KCD3-101EN-2 ON-OFF</p> |



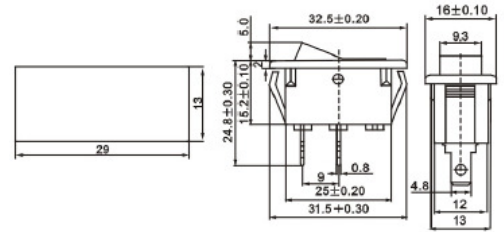
KCD3-101N-3 ON-OFF



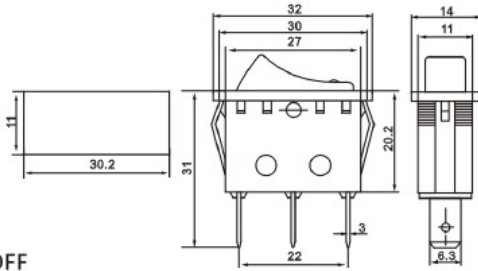
KCD3-101-7 ON-OFF



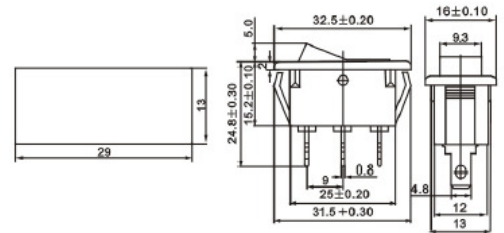
KCD3-101-4



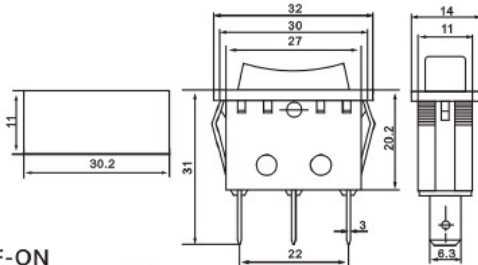
KCD3-101-8 ON-OFF



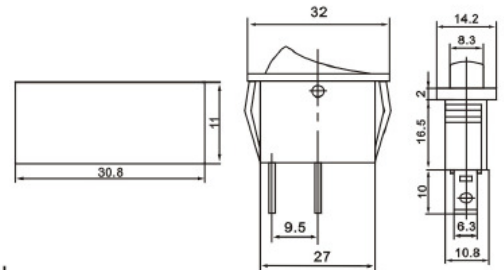
KCD3-101N-4 ON-OFF  
KCD3-101EN-4 ON-OFF



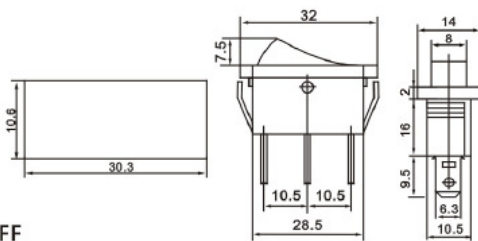
KCD3-102-8 ON-ON



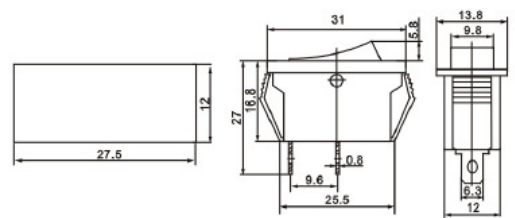
KCD3-103-4 ON-OFF-ON  
KCD3-123-4 (ON)-OFF-(ON) (双复位)



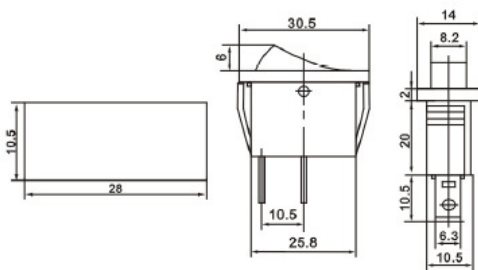
KCD3-102-9 ON-ON



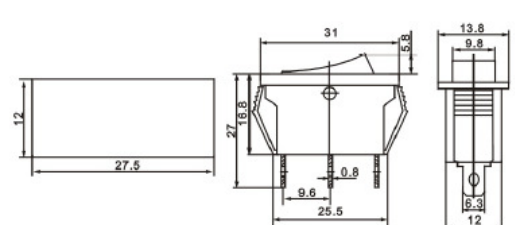
KCD3-101N-5 ON-OFF  
KCD3-102-5 ON-ON  
KCD3-103-5 ON-OFF-ON



KCD3-101-10 ON-OFF



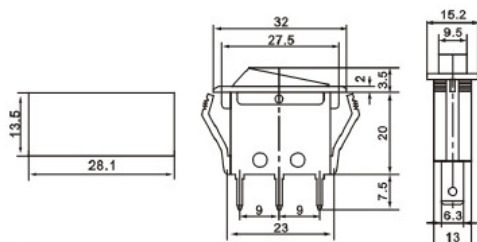
KCD3-101-6 ON-OFF



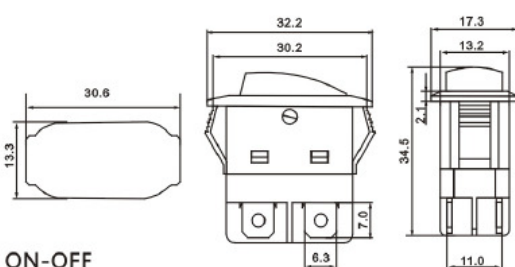
KCD3-102-10 ON-ON  
KCD3-103-10 ON-OFF-ON



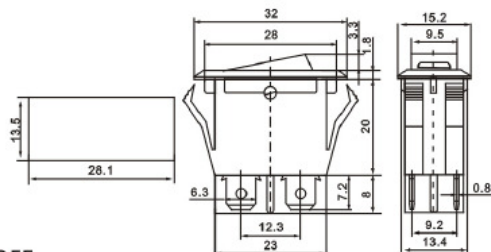
**ROCKER SWITCH**



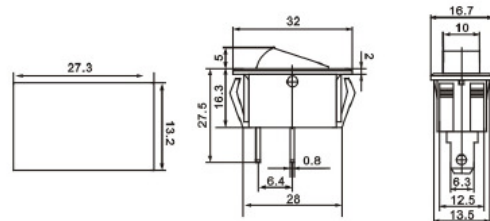
**KCD3-101N-11 ON-OFF**



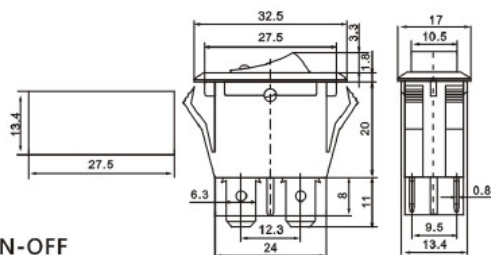
**KCD3-201N-14P ON-OFF**



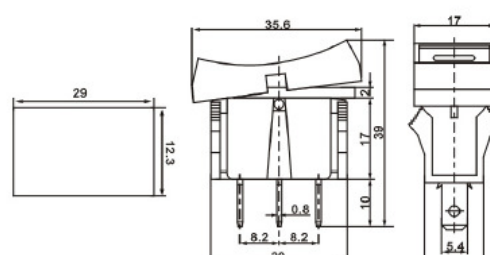
**KCD3-201-11A ON-OFF  
DPST 4P**



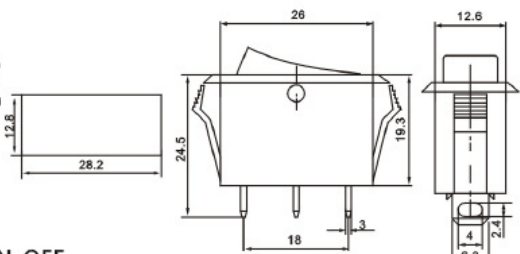
**KCD3-101-15**



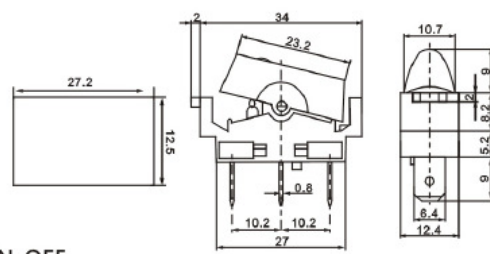
**KCD3-201 EN-11C ON-OFF  
DPST 4P**



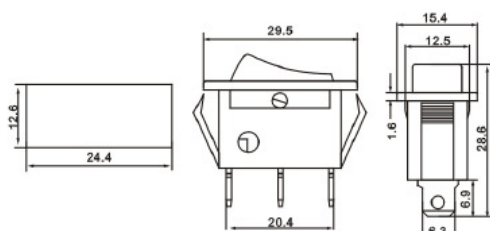
**KCD3-101-16**



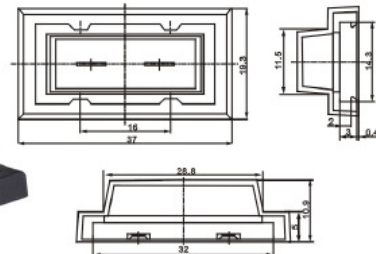
**KCD3-101N-12 ON-OFF**



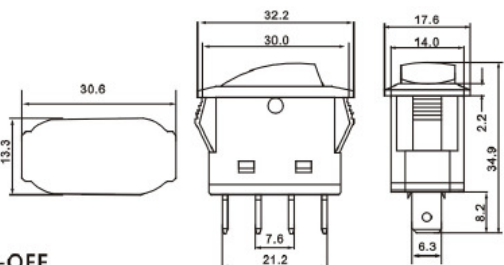
**KCD3-101EN-17 ON-OFF**



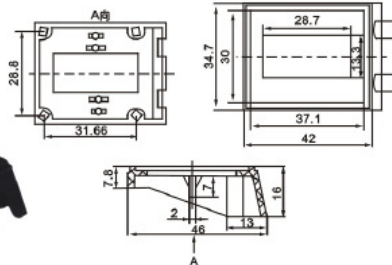
**KCD3-101N-13 ON-OFF**



**WPC-03  
Waterproof Cover**



**KCD3-201N-14 ON-OFF**



**SSC-03  
SWITCH SOCKET**