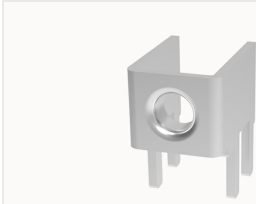


Overview

Product information



K15-00A(H)-10900000021

Metal Part,nominal current:26A,screw thread Specification:M3.5,Contact surface:Tin

Product advantages

- Screw connection, strong reliability
- Suitable for in-unit installation

Product certification

Technical data

Product drawing

3D model

□

Processing notes

Process

Wave soldering/manual soldering

Connection capacity

Torque

0.8N.m

Item properties

Type of installation

PCB welding

Connection method

Screw connection

screw thread

M3.5

Number of potentials

1

Pluggable or not

no

Material data

Environmental items	Compliant with REACH/RoHS
Contact material	Copper alloy
Contact zone metal surface	tin-plated

Accessories

Business data

Order number	10900000021
Packing unit	400
Minimum order quantity	
Products weight (without packaging)	2.9