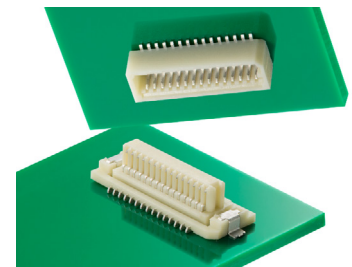


# SlimStack Board-to-Board Connectors, 0.80mm Pitch, Floating Series

**molex**

SlimStack B-to-B Connectors, 0.80mm Pitch, Floating Series feature a floating structure for space savings and easy assembly, and various mating height options in vertical and right-angle orientation for design flexibility



## Features and Advantages

**Rigid-type connectors available in 10 to 40 circuits**

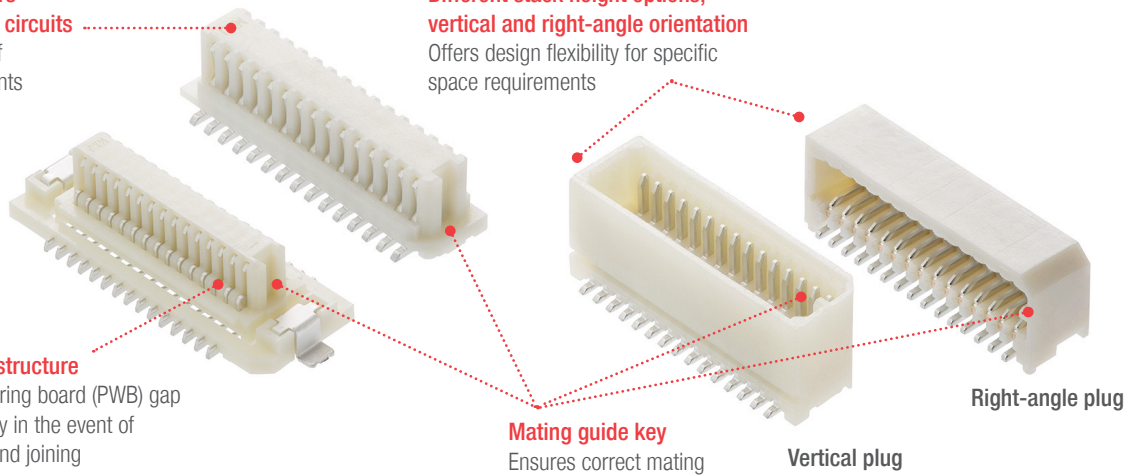
Meets a wide range of application requirements

**Different stack height options; vertical and right-angle orientation**

Offers design flexibility for specific space requirements

**Floating receptacle structure**

- Reduces printed wiring board (PWB) gap
- Facilitates assembly in the event of misalignment or blind joining



**Mating guide key**  
Ensures correct mating

**Vertical plug**

**Right-angle plug**

Lineup Combination					
Floating Type	Receptacle	Plug			
	52588	53307	53364	53353	53309
Mated Height (mm)	5.50 to 8.00	5.50	7.00	8.00	6.65
Rigid Type	Receptacle	Plug			
	52465	53307	53364	53353	53309
Mated Height (mm)	4.50 to 7.00	4.50	6.00	7.00	5.65

## Applications

### Automotive

Car infotainment

### Consumer

Smart speakers

Home appliances

### Datacom

Servers

Office equipment

### Industrial

Automation machines



Car Infotainment



Smart Speaker



Office Equipment

# SlimStack Board-to-Board Connectors, 0.80mm Pitch, Floating Series



## Specifications

### REFERENCE INFORMATION

Packaging: Embossed Tape and Reel  
 Designed In: Millimeters  
 RoHS: Yes  
 Halogen Free: No

### ELECTRICAL

Voltage (max.): 50V  
 Current (max.): 0.5A per circuit  
 Contact Resistance (max.):  
     40 milliohms (mate with 52588 series)  
     20 milliohms (mate with 52465 series)  
 Dielectric Withstanding Voltage (min.): 500V AC  
 Insulation Resistance (min.): 100 Megohms

### PHYSICAL

Housing: PA, UL 94V-0  
 Contact: Copper Alloy  
 Plating:  
     Contact Area – Refer to ordering information  
     Solder Tail Area – Refer to ordering information  
     Underplating – Nickel  
 Operating Temperature: -40 to +105°C

### MECHANICAL

Mating Force (max.):  
     Refer to product specifications  
 Unmating Force (min.):  
     Refer to product specifications  
 Durability (max.): 30 cycles

## Dimensions

Refer to drawing for detail dimension

## Ordering Information

Structure	Order No.		Mated Height (mm)	Mated Width (mm)	Orientation	Boss		Plating	Circuits
	Receptacle	Plug				Receptacle	Plug		
Floating Type	52588-**75	53307-**71	5.50	7.20	Vertical	Without Boss	Without Boss	Tin	18, 20, 30
		53364-**70	7.00				With Boss		
		53364-**71	8.00				Without Boss		
		53353-**71		Without Boss					
		53309-**70	6.65	4.70	Right Angle		Without Boss		
		53309-**71					With Boss		
Rigid Type	52465-**70	53364-**70	6.00	7.20	Vertical	With Boss	With Boss	Tin	10, 12, 20, 28, 30, 36, 40
		53309-**71	5.65	4.70	Right Angle				20, 24, 26, 28, 30, 40
	52465-**71	53307-**71	4.50	7.20	Vertical	Without Boss	Without Boss	Tin	10, 12, 14, 16, 18, 20, 22, 24, 26, 28, 30, 36, 40
		53364-**71	6.00						18, 20, 30, 36
		53353-**71	7.00						10, 16, 18, 20, 28, 30, 40
		53309-**70	5.65	4.70	Right Angle				10, 12, 14, 16, 18, 20, 22, 24, 26, 28, 30, 32, 36, 40
	52465-**62	53309-**62	5.65	5.65	4.70	Right Angle		Gold	20, 30, 32

\*\* : circuit size

[www.molex.com/link/slimstack.html](http://www.molex.com/link/slimstack.html)

Molex is a registered trademark of Molex, LLC in the United States of America and may be registered in other countries; all other trademarks listed herein belong to their respective owners.