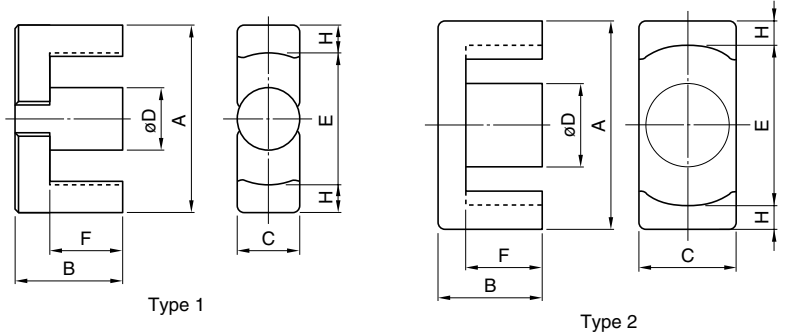
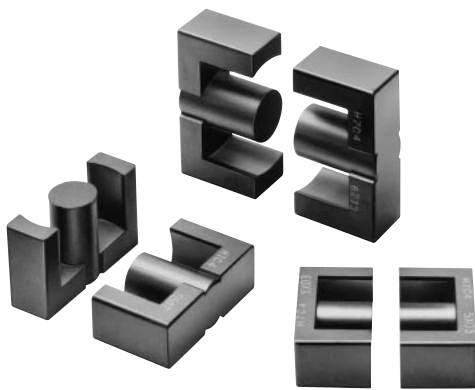


EER CORES



Part No.	U.S. lam. cores, DIN standard JIS	Type	Dimensions in $\frac{\text{mm}}{\text{inches}}$						
			A	B	C	D	E min.	F	H
PC40EER25.5-Z	JIS	1	25.5±0.5	9.3±0.2	7.5±0.2	7.5±0.15	19.8	6.2±0.2	2.6
	FEER25.5A		1.004±.020	.366±.008	.295±.008	.295±.006	.779	.244±.008	.102
PC40EER28-Z	JIS	2	28.55±0.55	14.0±0.2	11.4±0.25	9.9±0.25	21.2	9.65±0.25	3.4
	FEER28.5A		1.124±.022	.551±.008	.499±.010	.390±.010	.835	.380±.010	.134
PC40EER28L-Z	JIS	2	28.55±0.55	16.9±0.25	11.4±0.25	9.9±0.25	21.2	12.53±0.28	3.4
	FEER28.5B		1.124±.022	.665±.010	.499±.010	.390±.010	.835	.493±.011	.134
PC40EER35-Z	JIS	1	35.0±0.5	20.7±0.2	11.3±0.2	11.3±0.15	25.6	14.7±0.3	4.43
	FEER35A		1.378±.020	.815±.008	.445±.008	.445±.006	1.009	.579±.012	.174
PC40EER40-Z		1	40.0±0.5	22.4±0.2	13.3±0.25	13.3±0.25	29.0	15.4±0.3	5.28
			1.575±.020	.882±.008	.524±.010	.524±.010	1.142	.606±.012	.208
PC40EER42-Z	JIS	1	42.0±0.6	22.4±0.2	15.5±0.25	15.5±0.25	29.4	15.4±0.3	6.0
	FEER42		1.654±.024	.882±.008	.610±.010	.610±.010	1.157	.606±.012	.236
PC40EER42/42/20-Z		2	42.15±0.65	21.2±0.2	19.60±0.4	17.3±0.25	31.8	15.25±0.25	4.93
			1.659±.026	.835±.008	.772±.016	.681±.010	1.252	.600±.010	.194
PC40EER49-Z		1	49.0±0.8	19.0±0.3	17.2±0.4	17.2±0.25	36.4	12.4±0.2	6.0
			1.929±.031	.748±.012	.677±.016	.677±.010	1.433	.488±.008	.236

Part No.	Effective parameter				Electrical characteristics			Wt (g)	Bobbin item
	C ₁ (mm ⁻¹)	A _e (mm ²)	ℓ _e (mm)	V _e (mm ³)	AL-value (nH/N ²)*		Core loss (W) max. 100kHz, 200mT, 100°C		
					Without air gap	With air gap			
PC40EER25.5-Z	1.08	44.8	48.2	2160	1920±25%	100±5% 200±7%	0.98	11	BEER25.5-118CPFR
PC40EER28-Z	0.780	82.1	64.0	5250	2870±25%	200±5%	2.30	28	BEER28-1110CPFR
						400±7%			BEER28-1112CPHFR
PC40EER28L-Z	0.928	81.4	75.5	6150	2520±25%	160±5%	2.70	33	BEER28L-1110CPFR
						315±7%			BEER28L-1112CPHFR
PC40EER35-Z	0.849	107	90.8	9720	2770±25%	200±5%	4.20	52	BEER35-1112CPFR
						400±7%			BEER35-1116CPHFR
PC40EER40-Z	0.658	149	98.0	14600	3620±25%	200±5%	6.30	78	BEER40-1112CPFR
						400±7%			BEER40-1116CPHFR
PC40EER42-Z	0.509	194	98.8	19200	4690±25%	250±5%	8.60	102	BEER42-1114CPFR
						500±7%			BEER42-1116CPHFR
PC40EER42/42/20-Z	0.411	240	98.6	23700	5340±25%	250±5%	10.7	116	BEER42/20-1112CPFR
						500±7%			
PC40EER49-Z	0.395	231	91.3	21100	6250±25%	250±5%	5.4**	110	BEER49-1118CPFR
						500±7%			

* AL-value: 1kHz, 0.5mA, 100Ts

** Core loss: 100kHz, 150mT, 100°C